

# 'diamond-dot'

CAR RADIO DIVISION, ELECTRONIC INDUSTRIES LTD.

ASTOR HOUSE: 161-173 STURT STREET, SOUTH MELBOURNE Phone: 69 0300

## SERVICE DATA

### TRIUMPH "2000"

#### INSTALLATION INSTRUCTIONS FOR FITTING

#### ASTOR 12 VOLT CAR RADIO

#### MODELS PD-C - - and MD-C - - "J" SERIES

In addition to the selected receiver the Complete Installation requires:-

Accessory Package - Part No. 7281-128-04

Aerial - telescopic whip top mount type with lead cable - Part No. 4074-044-04

WARNING : BATTERY CONNECTIONS OF INCORRECT POLARITY WILL DAMAGE THE RECEIVER

Before commencing installation disconnect leads from car battery.

Note polarity of the battery terminal which is connected to vehicle chassis then set polarity switch on rear wall of receiver to corresponding position.

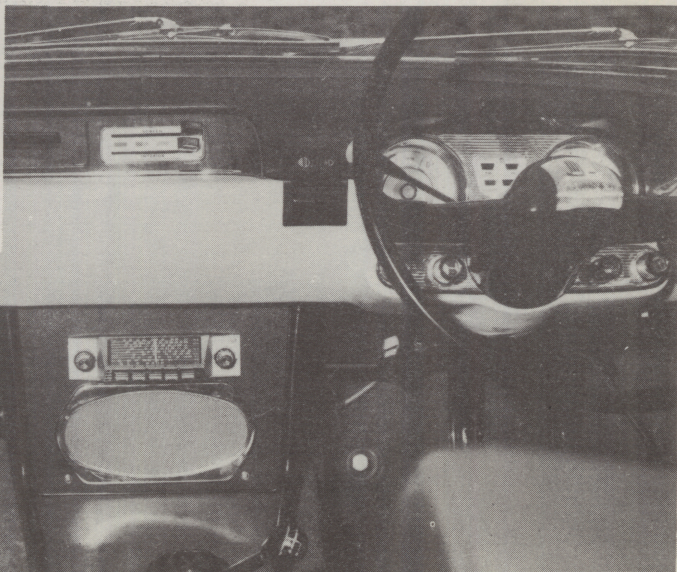
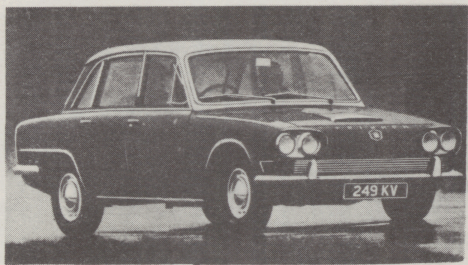
i.e. "+" position, positive to chassis and "-" position, negative to chassis

NOTE : THE AERIAL TRIMMER, located on the rear passenger side corner of receiver is to be adjusted at the conclusion of installation.

THE AERIAL is to be mounted on top of passenger side fender.

MOUNT POSITION Mark the fender 10" forward from fender-windscreen-bonnet junction and out  $2\frac{1}{2}$ " from bonnet fender joint line.

Continue installation as detailed in instructions supplied with aerial.



TRIUMPH - 5

File : TRIUMPH

Date : 8.8.1966

Page : 1

7135-273-67



#### AERIAL LEAD-IN CABLE

Route lead into engine compartment through triangular opening in wall adjacent to aerial.

Drill a  $\frac{1}{2}$ " dia. hole in the firewall near windscreen wiper motor at a position approximately 1" below main harness loom.

Fit plastic grommet into hole; feed lead-in through grommet then with excess cable inside car, push ferrule on cable into grommet.

#### THE RECEIVER AND SPEAKER

are to be assembled into the centre glove box located beneath the instrument panel.

1. Remove and discard the door from the centre glove box. Two speednut type fasteners secure door to hinge pivot pins.
2. Remove and retain centre screw, washer and nut fastening crash pad trim to lower section of instrument panel above glove box opening.
3. Remove and retain the two screws located in the floor section of glove box.
4. With the speednuts on large bracket at the bottom and near front of glove box opening, locate two holes in bracket over the holes in glove box floor.
5. Fasten triangular shaped bracket to rear of receiver with a flat washer and a  $\frac{3}{8}$ " x No.8 self-tapping screw. The short fold of bracket is to be below and beneath receiver.
6. Remove and discard dust shield from front of receiver can.
7. Fit spacer rings to control bush lock nuts and fit dial pointer to carriage arm.
8. Place receiver into opening so that the bracket attached to receiver rests on the bracket previously placed on floor of glove box. Align the holes in each bracket with the screw holes in floor.
9. Refit and securely tighten the two screws.
10. Feed lead-in cable over side wall of compartment then insert plug on end of lead into socket on passenger side rear corner of receiver.
11. Insert 3 Amp. fuse into fuse holder then connect to fuse cover on lead from receiver. Feed end of lead over side wall of compartment and connect to "ACC" terminal on rear of ignition switch.
12. Place front panel near receiver then insert plug on speaker lead into socket on driving side end of receiver.
13. Position front panel over glove box opening so that receiver control spindles protrude through holes in panel.
14. Locate hole in lug at top panel with hole in lower section of instrument panel. Fasten with screw, washer and nut previously removed.
15. Fasten panel at the bottom with cup washers and  $\frac{1}{2}$ " x No.6 csk.hd. chrome screws.
16. Fit dial reading to dial escutcheon MANUAL RECEIVER ONLY: Fit filler bar to push button opening, fasten securely with speednuts.
17. Place escutcheon on to front of panel. Fasten securely with chrome washers and barrel nuts.
18. Fit manual control knobs.
19. Securely tighten the three screws fastening front panel to vehicle.
20. Fasten aerial lead-in cable out of sight with the clip supplied.

## INTERFERENCE ELIMINATION

No distributor or spark plug suppressors are required.

NOTE: The contacting surfaces of the nuts and mount positions for the by-pass capacitors must be entirely free of paint and varnish to ensure good electrical contact. Lightly smear cleaned surfaces with lanoline.

Generator .5uF Capacitor - Part No.4009-024-32 (large claw type clip). Remove shroud from connector attached to armature terminal. Slide clip on end of capacitor lead on to armature terminal connector then refit shroud. Loosen ignition coil bracket mount screw nearest generator. Slide capacitor mount foot under head of screw then securely tighten screw.

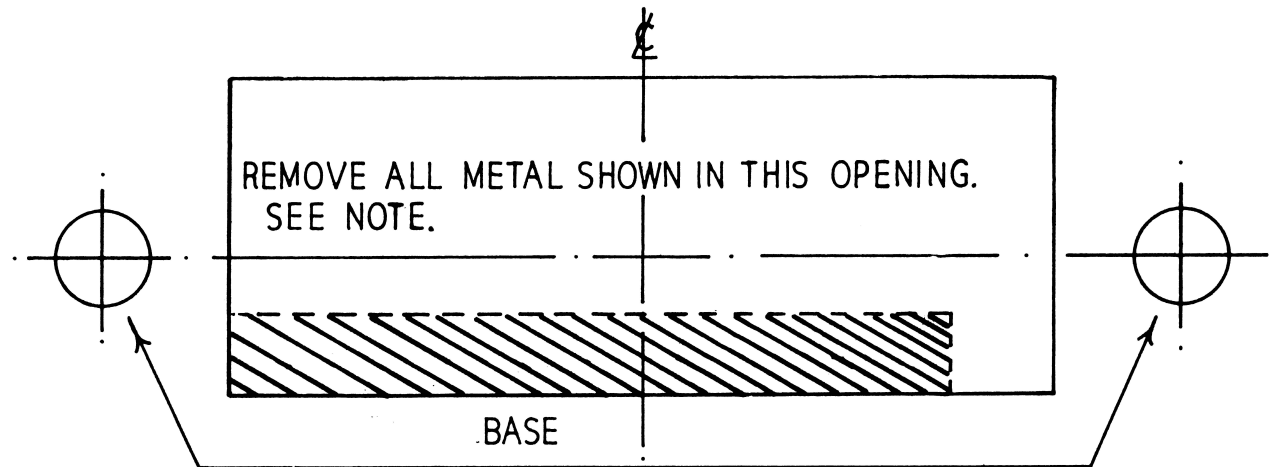
Ignition Coil .5uF Capacitor - Part No.4009-024-04 (small slide type clip). Connect clip on lead to vacant blade of battery side terminal of ignition coil. Loosen rear screw fastening ignition coil bracket. Slide capacitor mount foot under head of screw then securely tighten the screw.

Bonding: Bonnet to Fenders. Bonding clip Part No.7055-364-02

Two spring clips are supplied and are to be fitted to the internal flange of the fenders. With the curved spring section upward slide one of the clips on to the flange protruding inward above the internal cowl between the firewall and windscreen. The clip is to be located approximately 2" rearward from the firewall. Fit other clip to opposite side flange then lower the bonnet and clean off to bare metal at the points of contact between clips and bonnet.

AERIAL TRIMMER ADJUSTMENT Raise aerial to half extended height.

Tune receiver to a weak station near 1000 Kc/s (approximately centre of dial), adjust trimmer for maximum volume of signal.



ALIGN TEMPLATE WITH PREPARED SPINDLE HOLES

NOTE:- DO NOT REMOVE METAL FROM SHADED  
AREA WHEN FITTING MANUAL RECEIVER  
REMOVE ALL METAL PROTRUDING INTO  
RECTANGULAR AREA WHEN FITTING  
PUSH-BUTTON RECEIVER.

PBI212



# TRIUMPH "2000" MODELS PD-C - - and MD-C - - "J" SERIES

## COMPONENT PARTS LIST

4077-212-51	Aerial Lead-in Cable (1) 48" overall
7120-029-02	Grommet (1) plastic, lead-in cable
7055-365-01	Clip (1) lead-in cable
7054-004-02	Washer (1) special spiral, aerial mount.

## SPEAKER AND MOUNTING ACCESSORIES

4056-015-04	Speaker (1) permag type C84L36/127/15
7102-071-01	Organdie - 8" x 4" required
7084-226-02	Escutcheon Assy. (1)
7104-059-02	Grille (1)
1171-023-08	Lead - 12" required
7261-138-14	Washer (4) flat steel, 5/16" x 9/64"
7262-508-01	Washer (4) shakeproof 1/8" ext.
7148-302-11	Nut (4) 1/8" Whit.hex.
7171-015-01	Plug (1) on end of lead
1026-001-13	Extrusion PVC - 27" required

## RECEIVER MOUNTING ACCESSORIES

7028-629-03	Bracket (1) large
7152-752-01	Speednut (2) No.6 captive
7027-570-03	Bracket (1) triangular
7201-579-28	Screw (1) 3/8" x No.8 bdr.hd.
7261-164-02	Washer (1) flat steel, 9/16" x 11/64"
7055-425-02	Spacer Ring (2) 5/16" control bush lock nuts
7173-042-04	Dial Pointer (1)
4071-010-01	Fuse (1) 3 Amp.
7113-001-01	Fuse Holder Body (1)
7086-125-04	Contact (1) fuse holder
7225-012-02	Spring (1) fuse holder
1169-051-08	Lead - 12" required
7138-023-01	Connector (1) battery lead
7220-002-01	Shroud (1) connector
7100-009-02	Front Mount Plate (1)
7265-007-01	Cup Washer (2)
7201-527-06	Screw (2) 1/2" x No.6 csk.hd. chrome
7084-147-01	Escutcheon Assy. (1)
	Includes
7081-001-01	"diamond dot" emblem
7008-123-01	"ASTOR" metcal
7261-484-02	Chrome Washer (2)
7150-854-20	Barrel Nut (2)
7124-425-01	Knob (2) antiference and tone, rear
7124-424-11	Knob (2) tuning and volume, front

## INTERFERENCE ELIMINATION ACCESSORIES

4009-024-32	Capacitor (1) .5uF generator by-pass
4009-024-04	Capacitor (1) .5uF ignition coil by-pass
7055-364-02	Bonding Clip (2) bonnet to fender

## COMPONENTS SUPPLIED WITH RECEIVER

7070-115-11	Dial Reading (1)
7119-046-01	Filler Bar (1) push button escutcheon
7152-272-01	Speednut (2) filler bar fastening