

# 'diamond-dot'

CAR RADIO DIVISION, ELECTRONIC INDUSTRIES LTD.

ASTOR HOUSE: 161-173 STURT STREET, SOUTH MELBOURNE Phone: 69 0300

TRIUMPH - 4

File: TRIUMPH

Date: 18-8-65

Page: 1

## SERVICE DATA TRIUMPH "2000"

### INSTALLATION INSTRUCTIONS FOR FITTING

### ASTOR 12 VOLT CAR RADIO

#### MODEL PD-C5G

Complete Installation Package - PART No. 7281-128-03  
consists of Push Button Receiver, Speaker Assy. Mounting Hardware.  
Aerial and Interference Elimination Accessories.

#### WARNING:

THE POLARITY CHANGEOVER PLUG HAS BEEN SET IN THE POSITIVE TO CHASSIS OPERATING POSITION.

BATTERY CONNECTION OF INCORRECT POLARITY WILL DAMAGE THE RECEIVER

NEGATIVE terminal of supply must be connected to receiver battery lead.

#### NOTE:

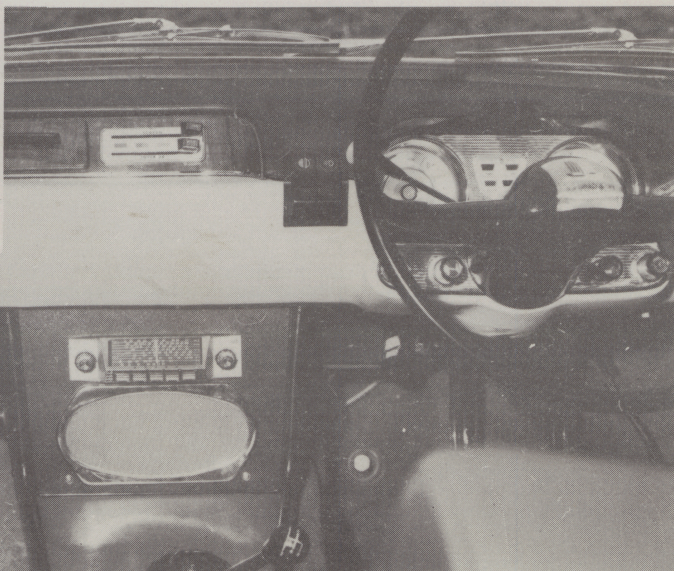
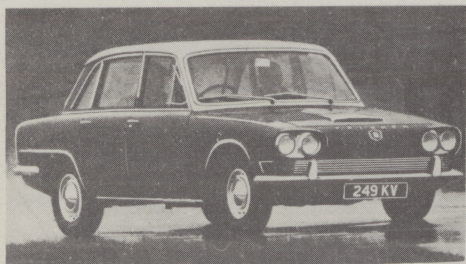
1. AERIAL TRIMMER is to be adjusted at conclusion of installation.
2. Disconnect leads from car battery before commencing installation.

#### THE AERIAL side fender.

five section, telescopic whip, top mount type is to be mounted on top of passenger

MOUNT POSITION: Mark the fender 10" forward from fender - windscreen-bonnet junction and 2½" out from bonnet fender join line.

Continue installation as detailed in instructions supplied with aerial.



17 OCT 1967



AERIAL LEAD-IN CABLE: Route lead into engine compartment through triangular opening in wall adjacent to aerial.

Drill a  $\frac{1}{2}$ " dia. hole in the firewall near windscreen wiper motor at a position approx. 1" below main harness loom.

Fit plastic grommet into hole; feed lead-in through grommet then with excess cable inside car, push ferrule on cable into grommet.

THE RECEIVER AND SPEAKER are to be assembled into the centre glove box located beneath the instrument panel.

1. Remove and discard the door from the centre glove box. Two speednut type fasteners secure door to hinge pivot pins.
2. Remove and retain centre screw, washer and nut fastening crash pad trim to lower section of instrument panel above glove box opening.
3. Remove and retain the screws located in the floor section of glove box.
4. With the speednuts on bracket at the bottom and near front of glove box opening, locate two holes in bracket over the holes in glove box floor.
5. Fasten bracket in position with screws previously removed.
6. Place receiver into opening so that the rear of receiver rests on top fold of bracket with the two screws locating into holes in bracket.
7. Fasten receiver securely with flat washers, shakeproof washers and 5/32" Whit. wing nuts.
8. Feed lead-in cable over side wall of compartment then insert plug on end of lead into socket on passenger side rear corner of receiver.
9. Feed receiver battery lead over side wall of compartment and connect to "ACC" terminal on rear of ignition switch.
10. Place front panel near receiver then insert plug on speaker lead into socket on driving side end of receiver.
11. Position front panel over glove box opening so that receiver control spindles protrude through holes in panel.
12. Locate hole in lug at top of panel with hole in lower section of instrument panel. Fasten with screw, washer and nut previously removed.
13. Fasten panel at the bottom with cup washers and  $\frac{1}{2}$ " x No. 6 csk. hd. chrome screws.
14. Place escutcheon on to front of panel. Fasten securely with chrome washers and barrel nuts.
15. Fit manual control knobs.
16. Securely tighten the three screws fastening front panel to vehicle.
17. Fasten aerial lead-in cable out of sight with the clip supplied.

INTERFERENCE ELIMINATION:

No distributor or spark plug suppressors are required.

NOTE: The contacting surfaces of the nuts and mount positions for the by-pass capacitors must be entirely free of paint and varnish to ensure good electrical contact. Lightly smear cleaned surfaces with lanoline.

Generator:    5uF capacitor- Part No. 4009-024-32 (large claw type clip). Remove shroud from connector attached to armature terminal. Slide clip on end of capacitor lead on to armature terminal connector then refit shroud. Loosen ignition coil bracket mount screw nearest generator. Slide capacitor mount foot under head of screw then securely tighten screw.

Ignition Coil:    5uF capacitor - Part No. 4009-024-04 (small slide type clip). Connect clip on lead to vacant blade of battery side terminal of ignition coil. Loosen rear screw fastening ignition coil bracket. Slide capacitor mount foot under head of screw then securely tighten the screw.

Bonding:    Bonnet to Fenders.    Bonding clip Part No: 7055-364-02

Two spring clips are supplied and are to be fitted to the internal flange of the fenders. With the curved spring section upward slide one of the clips on to the flange protruding inward above the internal cowl between the firewall and windscreen. The clip is to be located approx. 2" rearward from the firewall. Fit other clip to opposite side flange then lower the bonnet and clean off to bare metal at the points of contact between clips and bonnet.

AERIAL TRIMMER ADJUSTMENT:    Raise aerial to half extended height, adjust knob on passenger side of receiver for maximum output on a weak station near 1000 Kc/s. (approx. centre of dial).

# TRIUMPH "2000" (PD-C5G FITTING)

## COMPONENT PARTS LIST

4074-044-02	Aerial (1) 5 section, telescopic whip, top mount type.
4077-212-51	Aerial lead-in Cable (1) 48" overall.
7120-029-02	Grommet (1) plastic, lead-in cable.
7055-365-01	Clip (1) lead-in cable.
7054-004-02	Washer (1) Special spiral, aerial mount.

## SPEAKER AND MOUNTING ACCESSORIES

4056-015-02	Speaker (1) permag type C84L00/127/15
7102-071-01	Organdie - 8" x 4" required.
7084-226-02	Escutcheon Assy. (1)
7104-059-02	Grille (1)
1171-023-08	Lead - 12" required
7261-138-14	Washer (4) flat steel, 5/16" x 9/64"
7262-508-01	Washer (4) shakeproof 1/8" ext.
7148-302-11	Nut (4) 1/8" Whit. hex.

## RECEIVER ACCESSORIES

7028-454-03	Bracket (1)
7152-752-01	Speednut (2) No. 6 captive
7148-653-01	Wing Nut (2)
7261-164-03	Washer (2) flat steel, 9/16" x 11/64"
7262-510-01	Washer (2) shakeproof, 5/32" ext.
7100-009-02	Front Mount Plate (1)
7265-007-01	Cup Washer (2)
7201-527-06	Screw (2) 1/2" x No. 6 csk. chrome
7084-147-01	Escutcheon Assy. (1) includes
7081-001-01	"Diamond Dot" emblem.
7008-123-01	"ASTOR" metcal.
7070-045-11	Dial Reading (1) PUSH BUTTON RECEIVER
7124-226-01	Knob (2) antiference and tone, rear.
7124-227-01	Knob (2) tuning and volume, front
7005-027-01	Dial Background Assy. (1)
7173-042-04	Dial Pointer (1)
4071-001-02	Fuse (1) 5 amp
7113-001-01	Fuse Holder Body (1)
7065-011-01	Fuse Holder Cover (1)
1169-051-08	Battery Lead - 12" required.
7138-023-01	Connector (1) battery lead.
7220-002-01	Shroud (1) connector.

## INTERFERENCE ELIMINATION ACCESSORIES

4009-024-32	Capacitor (1) .5uF generator by-pass
4009-024-04	Capacitor (1) .5uF ignition coil by-pass
7055-364-02	Bonding Clip (2) bonnet to fender.