

X1

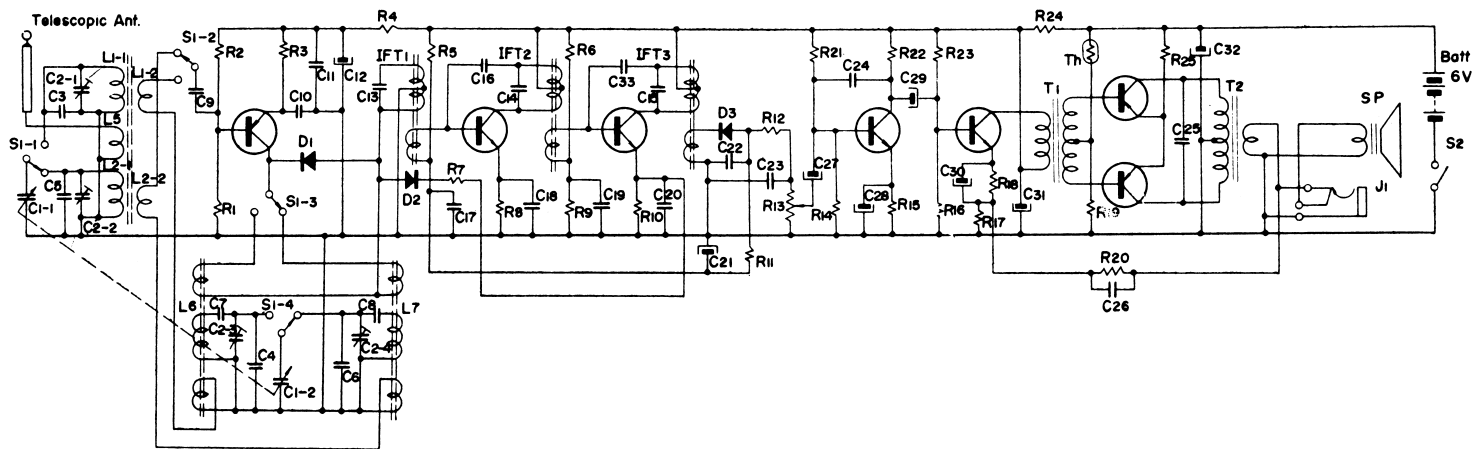
X2

X3

X4

X5

X6, X7



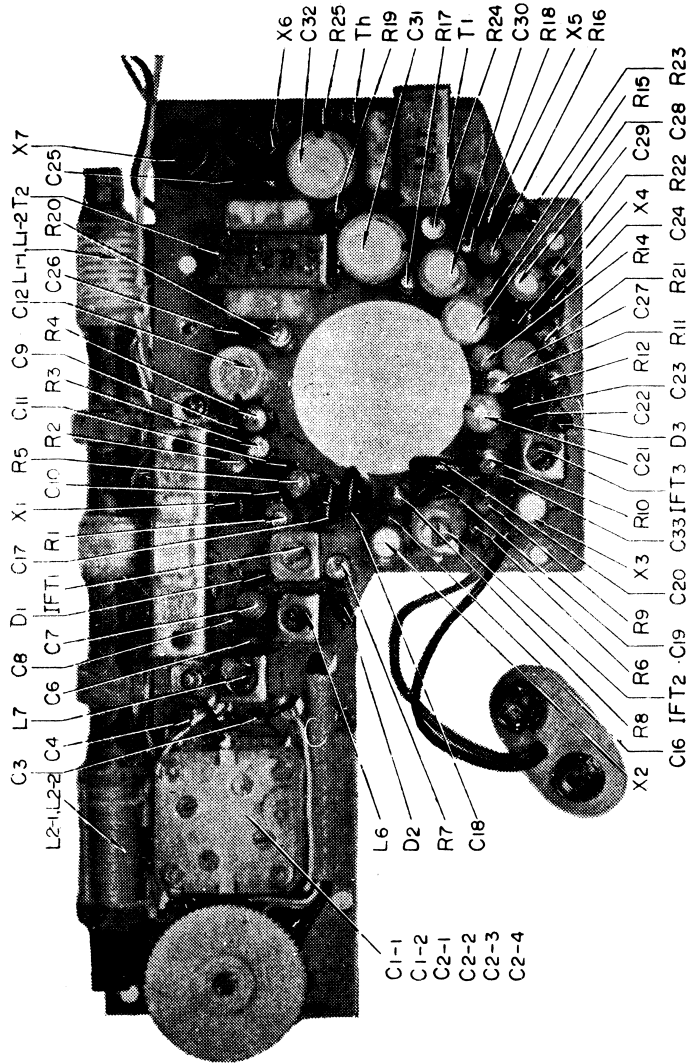
Part No.	Symbol	Description	Part No.	Symbol	Description
1-501-025-00	TA	Telescopic Antenna	1-203-419-00	R ₁₈	220 Ω RD 1/16 RL ± 5%
1-401-134-00	L ₁₋₁ , L ₁₋₂	SW, Ferrite Bar Antenna	1-203-425-00	R ₁₉	5.6 KΩ "
"	L ₂₋₁ , L ₂₋₂	MW, Ferrite Bar Antenna	1-203-598-00	R ₂₀	150 Ω "
"	L ₅	"	1-203-630-00	R ₂₁	18 KΩ "
1-405-212-00	L ₆	SW, Oscillator Coil	1-203-780-00	R ₂₂	1.2 KΩ "
1-405-211-00	L ₇	MW, Oscillator Coil	1-203-630-00	R ₂₃	18 KΩ "
1-403-025-00	IFT ₁	1st IF Transformer	1-203-419-00	R ₂₄	220 Ω "
1-403-026-00	IFT ₂	2nd "	1-203-450-00	R ₂₅	5.1 Ω "
1-403-027-00	IFT ₃	3rd "	1-203-780-00	R ₂₇	1.2 KΩ "
1-513-107-00	S ₁	Band Setting Switch	1-151-050-00	C ₁	Tuning Capacitor, 2 gang
1-221-241-00	S ₂	Power Switch (R ₁₃)	1-221-241-00	C ₂	Trimmer Capacitor, 4 unit Capacitor
1-507-050-00	J ₁	Earphone Jack	1-101-049-00	C ₃	5 pF ± 0.5 pF Ceramic
1-423-051-00	T ₁	Driving Transformer	"	C ₄	5 pF " "
1-427-073-00	T ₂	Output Transformer	1-101-039-00	C ₅	10 pF ± 10% "
1-502-053-02	SP	Speaker 8 Ω	"	C ₆	10 pF " "
	X ₁	Transistor 2SA122	1-103-152-00	C ₇	2000 pF ± 7% Styrol
	X ₂	" 2SC76	1-103-151-00	C ₈	300 pF " "
	X ₃	" 2SC76	1-105-108-00	C ₉	0.01 μF ± 30% Mylar
	X ₄	" 2SD65	"	C ₁₀	0.01 μF " "
	X ₅	" 2SD65	1-105-109-00	C ₁₁	0.02 μF " "
	X ₆	" 2SB48	1-121-135-06	C ₁₂	50 μF 6V ± 100% Electrolytic
	X ₇	" 2SB48		C ₁₃	150 pF built-in IFT ₁
	D ₁	Diode IT261	1-101-045-00	C ₁₄	150 pF built-in IFT ₂
	D ₂	" IT23G	1-105-109-00	C ₁₅	150 pF built-in IFT ₃
	D ₃	" IT23G	1-105-109-00	C ₁₆	1 pF ± 0.5 pF Ceramic
	Th	Thermistor CS-120	1-105-109-00	C ₁₇	0.02 μF ± 30% Mylar
		Carbon Resistor	1-105-109-00	C ₁₈	0.02 μF " "
1-203-629-00	R ₁ *	15 KΩ RD 1/16 RL ± 5%	1-105-109-00	C ₁₉	0.02 μF " "
1-203-408-00	R ₂	8.2 KΩ RD 3/8 RL ± 5%	1-105-110-00	C ₂₀	0.04 μF " "
1-203-781-00	R ₃	4.2 KΩ RD 1/16 RL ± 5%	1-121-104-06	C ₂₁	10 μF 6V Electrolytic
1-203-423-00	R ₄	2.2 KΩ "	1-105-108-00	C ₂₂	0.01 μF ± 30% Mylar
1-203-639-00	R ₅ *	68 KΩ "	"	C ₂₃	0.01 μF " "
1-203-640-00	R ₆	16 KΩ "	1-105-107-00	C ₂₄	0.005 μF " "
1-203-609-00	R ₇	620 Ω "	1-105-110-00	C ₂₅	0.05 μF " "
1-203-420-00	R ₈	470 Ω "	1-105-109-00	C ₂₆	0.02 μF " "
1-203-780-00	R ₉	1.2 KΩ "	1-121-104-06	C ₂₇	10 μF 6V ± 100% Electrolytic
1-203-598-00	R ₁₀	150 Ω "	1-121-102-06	C ₂₈	30 μF 6V " "
1-203-425-00	R ₁₁	5.6 KΩ "	1-121-104-06	C ₂₉	10 μF 6V " "
1-203-420-00	R ₁₂	470 KΩ "	1-121-124-06	C ₃₀	50 μF 3V " "
	R ₁₃	Volume Control 5 KΩ	1-121-165-06	C ₃₁	80 μF 6V " "
		Carbon Resistor	"	C ₃₂	80 μF 6V " "
1-203-781-00	R ₁₄	4.2 KΩ RD 1/16 RL ± 5%	1-101-045	C ₃₃	1 pF ± 0.5 pF Ceramic
1-023-621-00	R ₁₅	750 Ω "	1-105-109-00	C ₃₄	0.02 μF ± 30% Mylar
1-203-423-00	R ₁₆	2.2 KΩ "			
1-203-450-00	R ₁₇	5.1 Ω "			

* To be adjusted

SONY

Schematic Diagram for TR-729

S33



Mounting Diagram for TR-729 (Printed Side)

