

PRECAUTION

Before installing the speakers, remove the fusible link connector from the battery "plus"

terminal to prevent electrical hazard due to short-circuit which may occur.

MOUNTING THE SPEAKER(S)

A) RE-345B (see Fig. 1)

1. Remove the rear seat.
2. Remove the rear package tray trim panel, fixed with 6 retainers, from the inside of the room. Make an oval hole for the speaker and 6 mounting holes for the speaker grille according to the marks on the rear side.

Insert the speaker grille (351-0124-00) in place and secure it with Plate Nuts (725-0197-00).

3. Place Special Nuts (722-0329-00) to a hole for the Speaker (SPA-386-105) installation as illustrated, Tighten the Bolts (734-5016-31) from trunk room side.
4. Replace all the parts removed from the car.

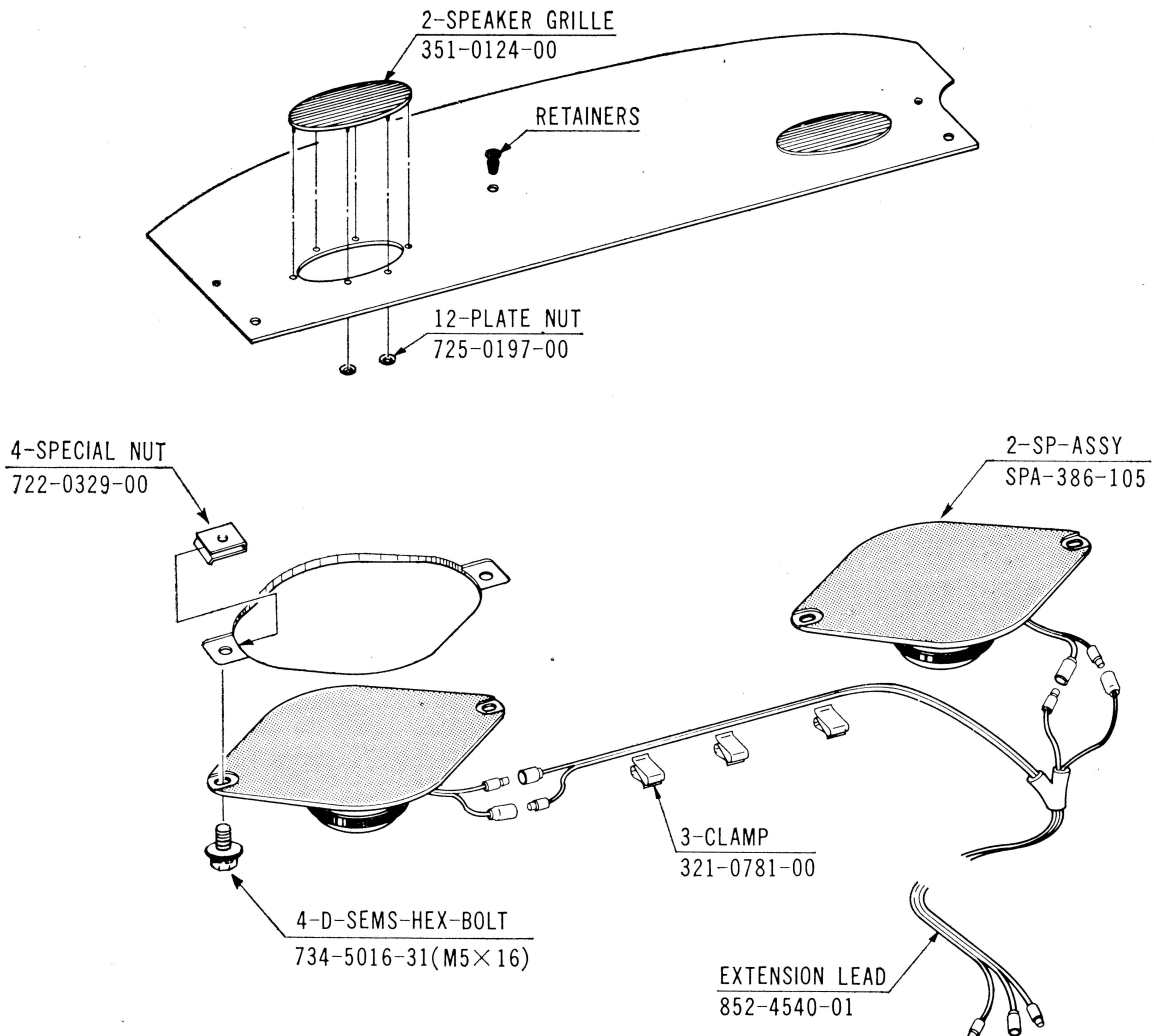


Fig. 1

MOUNTING THE RADIO

A) Corolla "SEDAN," "HARD-TOP" or LEVIN" (see Fig. 5)

1. Remove the instrument panel and pull off the cigarette lighter connector.
 2. Attach the radio to the Mounting Brackets (300-5450-00, 300-5451-00) and secure with Screws (732-5008-11).
- Connect Bonding Wire (840-0246-00) to the rear of the set with Bolt (734-5010-31).

The "earth" side of the wire should be firmly secured to the ash-tray holder for proper grounding.

3. Fix Plate Nuts (725-0198-00) on the instrument panel and, after connecting the antenna lead, speaker leads and power lead, secure the set with Tapping Screws (704-5014-81).
4. Replace all the parts removed from the car.

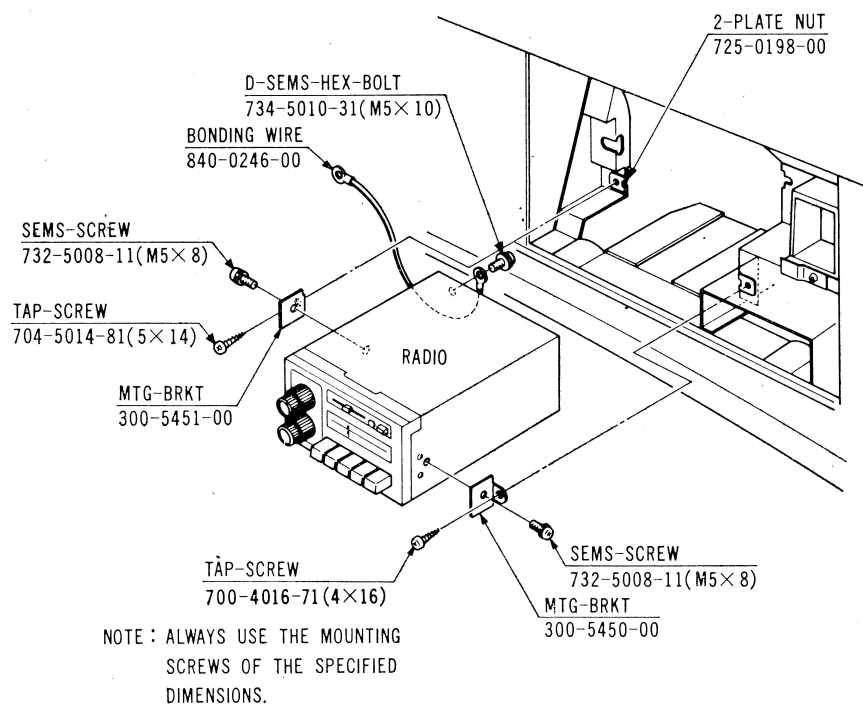


Fig. 5

B) Sprinter "COUPE" or "TRUENO" (see Fig. 6)

1. Remove the instrument panel and pull off the cigarette lighter connector.
2. Attach the radio to Mounting Bracket (300-5449-00) and secure with Screws (732-4006-11). Connect Bonding Wire (840-0246-00) to the rear of the set with Screws (732-5008-11). The "earth" side

of the wire should be firmly secured to the ash-tray holder for proper grounding.

3. Put the set into the instrument panel and, after connecting the antenna lead, speaker leads and power lead, fix the set with Bolts (734-5010-31). The bottom side of the set should be secured with Bolt (734-5010-31).
4. Replace all the parts removed from the car.

1. Fix the speaker to the instrument pad by securing the Nuts (723-6000-21), supplied

bolts on the rear side.

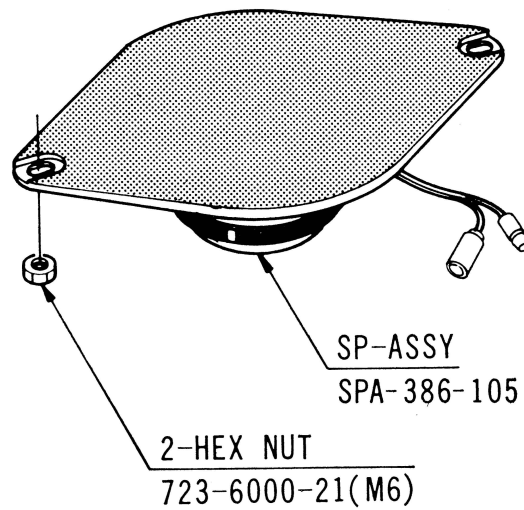


Fig. 2

INSTALLATION OF NOISE SUPPRESSORS

A) Ignition Coil Noise (see Fig. 3)

A capacitor type Noise Suppressor (085-0010-31) should be tightend to the belt on the Ignition Coil.

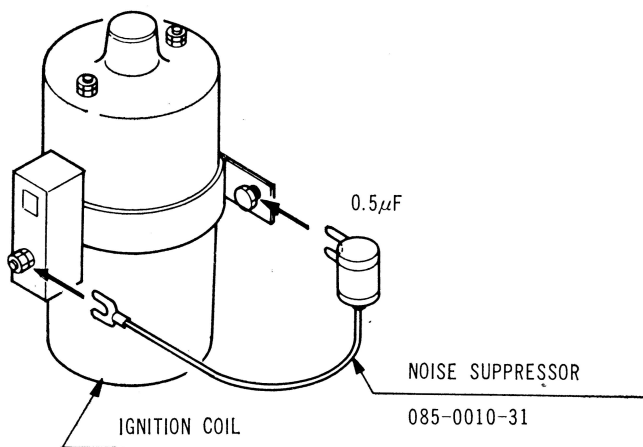


Fig. 3

B) Voltage Regulator Noise (see Fig. 4)

A capacitor type Noise Suppressor (085-0145-00) should be tightend to the Voltage Regulator bracket.

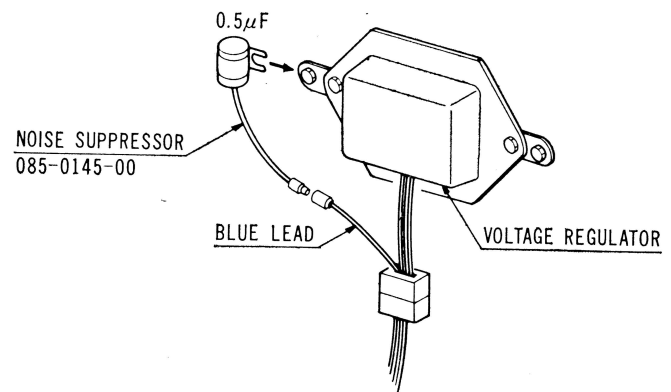


Fig. 4

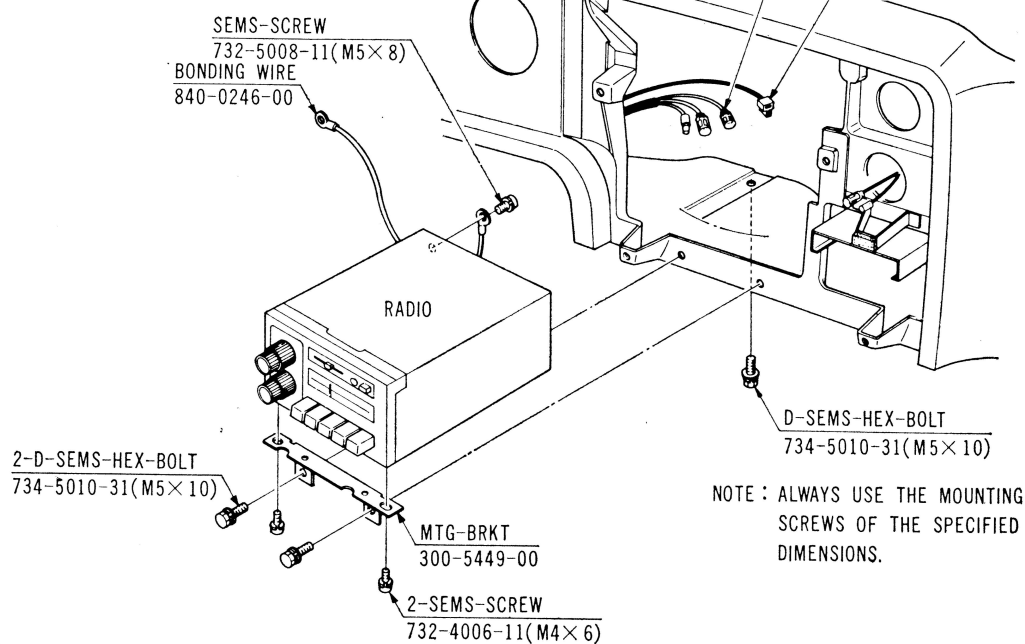


Fig. 6

C) Sprinter "SEDAN" (see Fig. 7)

1. Remove the heater control panel.
2. Remove the instrument panel and pull off the cigarette lighter connector.
3. Attach the radio to Mounting Brackets (300-5450-00, 300-5451-00) and secure with Screws (732-5008-11). Connect Bonding Wire (840-0246-00) to the rear of the set with Bolt (734-5010-31).

The "earth" side of the wire should be firmly secured to the ash-tray holder for proper grounding.

4. Fix Plate Nuts (725-0198-00) on the instrument panel and, after connecting the antenna lead, speaker leads and power lead, secure the set with Tapping Screws (704-5014-81).
5. Replace all the parts removed from the car.

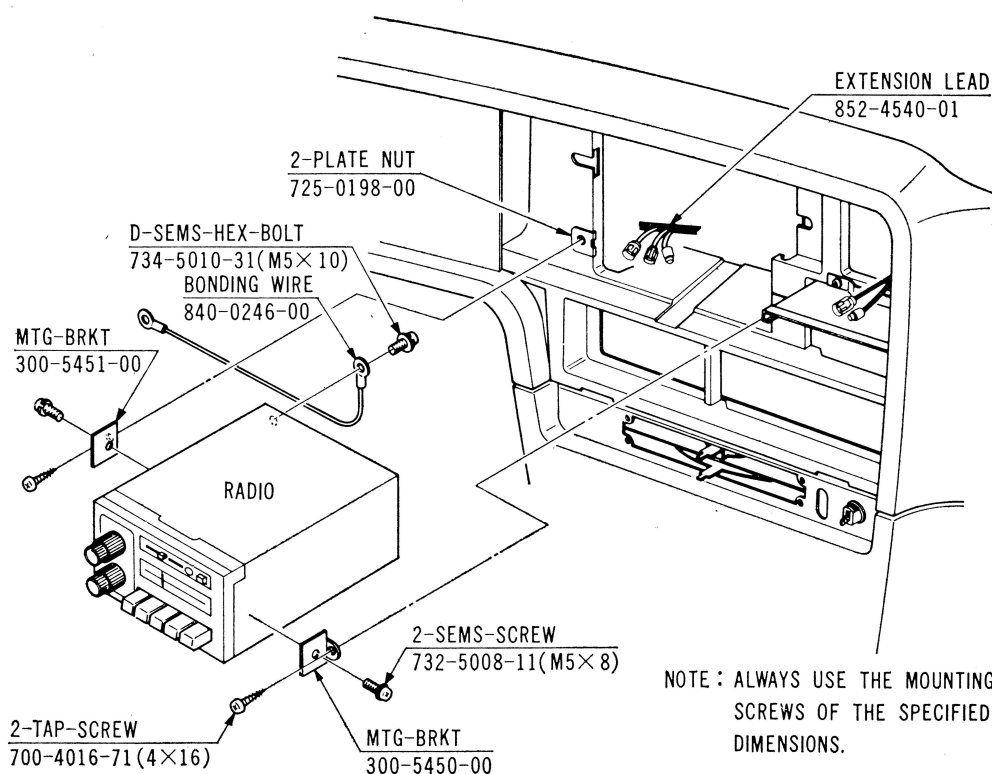


Fig. 7