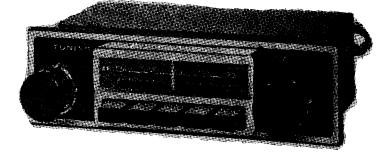


**SCHEMATIC DIAGRAM**



IC 1  
TR2004  
RF AMP. CONV.  
& IF AMP.

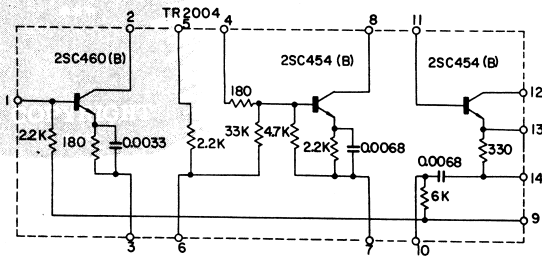
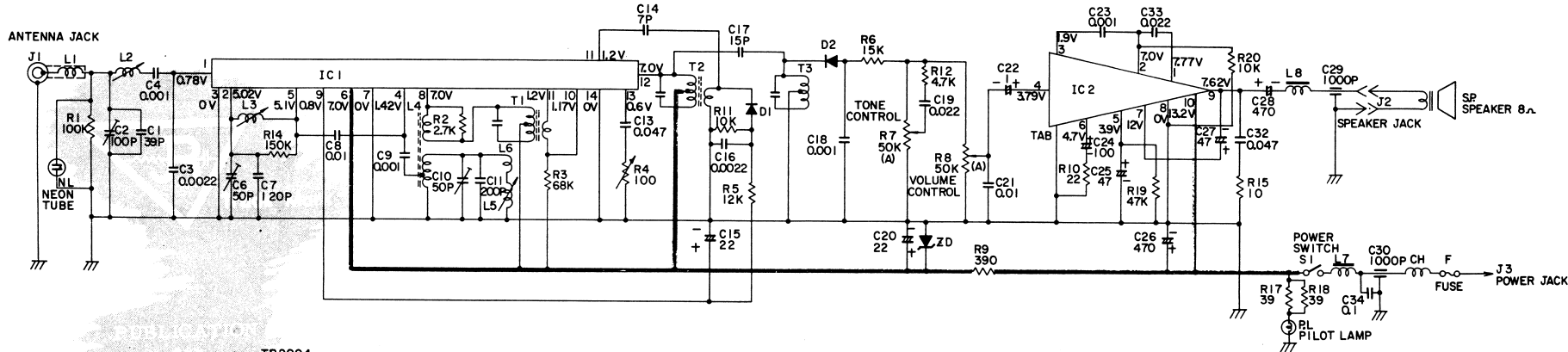
Hitachi TM-435E

D 1  
1N60  
AGC

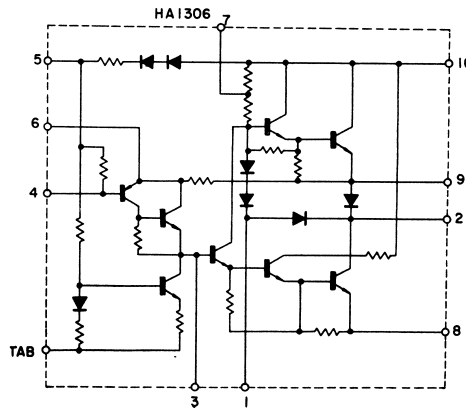
D 2  
1N60  
DET.

Z D  
HZ-7  
VOLT. STAB.

IC 2  
HA1306  
AF AMP. & POWER AMP.



NOTE 1. VOLTAGE MEASURED WITH VOLTMETER AT 14.4V DC, BASE OF ⊕ SIDE POWER SUPPLY, VOLUME CONTROL AT MINIMUM AND NO SIGNAL.  
2. ALL RESISTANCE VALUES IN OHMS. K=1000  
3. ALL CAPACITANCE VALUES IN μF EXCEPT P NOTED. P=μμF=PF



**SPECIFICATIONS**

- CIRCUIT SYSTEM.....2-IC superheterodyne
- TUNING RANGE.....530~1,605kHz
- INTERMEDIATE FREQUENCY.....455kHz
- IC
- IC1 TR2004.....RF Amp., Conv. & IF Amp.
- IC2 HA1306.....AF Amp. & Power Amp.
- DIODES
- D1 1N60.....AGC
- D2 1N60.....Det.
- ZD HZ-7.....Voltage Stabilizer
- LOUDSPEAKER.....Impedance 4 ohm (Sold separately)
- AUDIO OUTPUT.....7 W
- POWER SUPPLY.....14.4V
- CURRENT CONSUMPTION.....210mA
- ANTENNA.....Telescopic antenna for car use (Sold separately)
- SENSITIVITY.....20 dB (max.)  
26 dB (practical)
- DIMENSIONS.....2"(H)×6 1/2"(W)×3 1/2"(D)  
(5×16×8cm)
- WEIGHT.....1 lbs. 15 oz.

