

'diamond-dot'

CAR RADIO DIVISION, ELECTRONIC INDUSTRIES LTD.

ASTOR HOUSE: 161-173 STURT STREET, SOUTH MELBOURNE Phone: 69 0300

STANDARD - 2
File - STANDARD
Date - 30.11.66
Page - 1.

SERVICE DATA

STANDARD "VANGUARD" PHASE III

4 and 6 CYLINDER

INSTALLATION INSTRUCTIONS FOR FITTING

ASTOR 12 VOLT CAR RADIO

MODELS PD-C - - and MD-C - - "J" SERIES RECEIVERS

In addition to the selected receiver the installation requires:-

Installation Accessory Package - Part No. 7281-104-03 (orange/purple)

Aerial - 5 section telescopic whip top mount type - P/No. 4074-044-02

or Aerial - 5 section telescopic whip lock down type - P/No. 4074-052-02

WARNING: BATTERY CONNECTION OF INCORRECT POLARITY WILL DAMAGE THE RECEIVER

Before commencing installation disconnect leads from car battery. Note the polarity of the battery terminal which is connected to vehicle chassis then set the receiver polarity changeover switch to corresponding position. i.e. "+" position, positive to chassis, "-" position, negative to chassis.

NOTE: AERIAL TRIMMER is to be adjusted during the installation as detailed overleaf.

THE AERIAL as selected is to be mounted in the position detailed below.

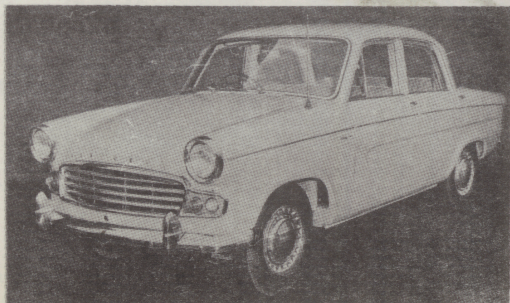
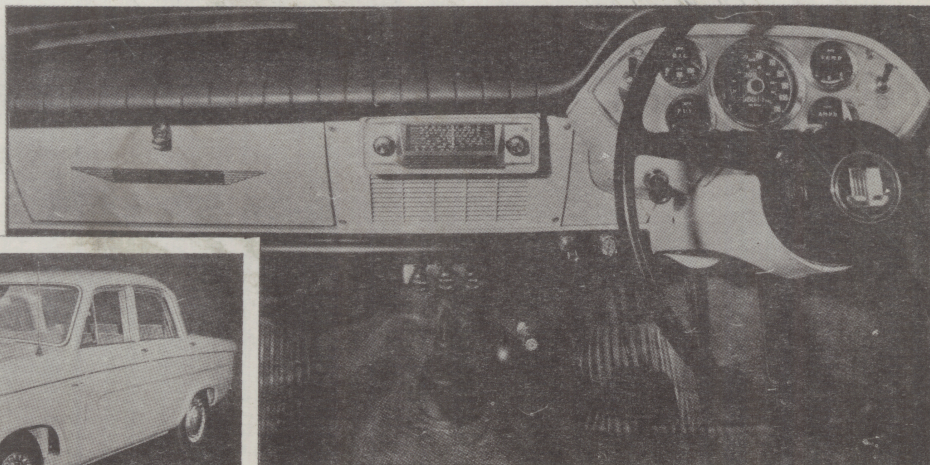
Top Mount Aerial: Mark a position 9" forward from front edge of driving side door windscreen and fender joinline and 5" out from bonnet fender joinline.

Lock Down Aerial: Mark a position 12½" forward from edge of driving side door windscreen and fender joinline and 5" out from bonnet fender joinline.

AERIAL LEAD-IN CABLE

Top Mount Aerial: Feed cable through 1" hole in side wall above kick pad then fit grommet supplied into 1" hole.

Lock Down Aerial: Drill a ½" dia. hole in splash shield beneath fender, feed cable through hole then pull shroud grommet through until head of grommet locates in and seals ½" hole. Feed cable through 1" hole in side wall above kick pad then fit grommet supplied into 1" hole.



7135-273-88.

THE SPEAKER: (6") assembled to a baffle is to be mounted in the position occupied by the central glove box.

- 1 Remove and retain the four Phillips hd. screws from front or centre glove box. Remove and discard glove box.
- 2 On each side of glove box opening there are two small brackets.
IMPORTANT: From the metal around hole in uppermost bracket on passenger side of glove box, clean off all paint and burrs for approx. $\frac{1}{8}$ " with emery paper or a sharp edged tool to ensure a good electrical contact. Lightly smear cleaned surface with lanoline.
- 3 Place a No. 8. captive speednut on to each of the four brackets so that the flat surface of speednuts are to be inside of glove box opening.
- 4 Fold side wing of speaker baffle assy. so that wings cover front of speaker. The two large holes in wings being toward the top. Feed baffle assy. through central opening. Open out wings so that the two pierced holes in each wing of baffle locate over speednuts previously fitted to brackets.
- 5 Insert the lug on end of receiver earth lead between speednut which is over the previously cleaned hole and speaker baffle wing. The free end of earth lead is to be over top of baffle.
- 6 Place a flat washer on to a $\frac{1}{2}$ "x No. 8 bdr. hd. screw. Insert screw through hole in baffle wing, hole in lug on end of receiver earth lead into speednut which is over the previously cleaned hole. Securely tighten screw.
- 7 Place a flat washer on to each of three $\frac{1}{2}$ "x No. 8 bdr. hd. screws. Insert screws through remaining holes in baffle wings into speednuts fitted to brackets. Securely tighten screws.

THE RECEIVER: An escutcheon is to be assembled to the front of receiver. Two screws fasten escutcheon to mount brackets attached to sides of receiver. The receiver with escutcheon is then mounted in front of speaker in the central glove box opening. The escutcheon which includes a slotted grille is fastened to instrument panel with the four Phillips hd. screws, previously removed.

- 1 Place a flat mount bracket to each side of receiver so that two holes in each bracket locate over the rear most thread forms on sides of receiver. The hole in short right angled corner of each bracket is to be toward front of receiver. When mounted, the brackets hang downward.
- 2 Place a flat washer on to each of four $\frac{3}{8}$ "x No. 8 bdr. hd. screw. Insert screws through holes in bracket into thread forms on receiver. Securely tighten.
- 3 Press the two spacer rings supplied, over the control bush lock nuts, then fit dial pointer to carriage arm.
- 4 Fit dial reading to chrome escutcheon. **MANUAL RECEIVER ONLY:** To the push button opening fit filler bar then securely fasten with speednuts.
- 5 Place the ducoed escutcheon, chrome escutcheon, chrome washers and barrel nuts on to front of receiver. Align escutcheon to receiver then securely tighten the barrel nuts and fit manual control knobs.
- 6 Place front of receiver in escutcheon opening so that side mount brackets locate against inside faces of ribs on rear of escutcheon and the holes in ribs locate over holes in brackets.
- 7 Insert four $\frac{3}{8}$ "x $\frac{3}{16}$ " Whit. rd. hd. screws through holes in escutcheon ribs and holes in mount brackets.
- 8 Place a flat washer, a sh/proof washer and a $\frac{3}{16}$ " Whit. nut on to each of the protruding screws. Securely tighten nuts.
- 9 Place receiver on a box or some object near glove box opening, then feed aerial cable behind instrument panel and through large hole on driving side of speaker baffle. Insert cable plug into socket on passenger side rear corner of receiver.
- 10 Insert plug on end of speaker lead into receiver socket adjacent to battery lead entry.

- 11 Insert fuse supplied into moulded fuse holder, then connect fuse holder to fuse cover on end of lead from receiver.
- 12 Feed receiver battery lead through large hole on driving side of speaker baffle then connect lead to battery side of ignition switch.
- 13 Reconnect leads to car battery.
- 14 Switch receiver 'ON' and allow it to operate for several minutes.
- 15 Adjust aerial trimmer as follows:-
Raise aerial to half extended height. NOTE: If a fully retractable aerial is fitted raise the large diameter outer tube until it is against stop in aerial base. Tune receiver to a weak station near 1000 Kc/s. (approximately centre of dial, adjust trimmer for maximum volume of signal.
- 16 Switch receiver 'OFF', then disconnect leads from car battery.
- 17 Place a flat washer and a sh/proof washer on to a $\frac{3}{8}$ " x $\frac{3}{16}$ " Whit. hex. nd. screw; insert screw through hole in lug on free end of receiver earth lead into tapped hole in rear of receiver. Securely tighten screw.
- 18 Place receiver and escutcheon assembly into position in central glove box opening.
- 19 Insert the four Phillips hd. screws, previously removed, through the holes in escutcheon into existing speednuts. Securely tighten screws.

INTERFERENCE ELIMINATION: No spark plug suppressors are required.

Distributor Suppressor: Must not be fitted as vehicle is equipped with suppression leads.

NOTE: Mount positions for the by-pass capacitors must be entirely free of paint and varnish to ensure a good electrical contact. Lightly smear cleaned surfaces with lanoline.

Generator Capacitor: .5uF Part No. 4009-024-16 (large lug on end or lead.)
Loosen off generator swivel mount bolt. Insert capacitor mount foot under bolt and securely tighten. Remove shroud from armature terminal. NOT THE FIELD TERMINAL. Connect lug on capacitor lead to terminal connector then refit shroud.

Ignition Coil Capacitor: .5uF Part No. 4009-024-25 (small lug on lead.)
Loosen off one of the screws fastening ignition coil mount bracket in position. Slide capacitor mount foot under head. Securely tighten screw. Connect lug to battery terminal on coil.

Connect leads to car battery.

STANDARD "VANGUARD" PHASE III

PD-C - - and MD-C - - "J" SERIES RECEIVERS

COMPONENT PARTS LIST

4077-093-67 Aerial Lead-in Cable (1) 48" overall
7106-038-01 Grommet (1) 1" dia.

SPEAKER AND MOUNTING ACCESSORIES

7296-015-02 Speaker and Baffle Assembly (1)
includes:-
4056-003-09 Speaker (1) 6"dia. permag type 6M36/80/15
7009-023-01 Baffle Assembly (1)
7198-177-20 Screw (4) $\frac{1}{2}$ "x5/32" Whit.rd.hd.
7261-164-02 Washer (4) flat steel, 9/16"x11/64"
7262-510-01 Washer (4) shakeproof 5/32" ext.
7148-303-11 Nut (4) 5/32"
7152-753-06 Speednut (4) No.3 captive
7201-079-39 Screw (4) $\frac{1}{2}$ "x No.8 bdr.hd.
7261-164-02 Washer (4) flat steel, 9/16"x11/64"
4077-174-01 Lead Assy. (1) 18" required.

RECEIVER MOUNTING ACCESSORIES

7027-169-02 Bracket (2)
7261-164-02 Washer (4) flat steel, 9/16"x11/64"
7201-079-08 Screw (4) $\frac{3}{8}$ "x No.8 bdr.hd.
7055-425-02 Spacer Ring (2) control bush lock nuts.
7173-042-03 Dial Pointer (1)
7084-147-01 Dial Escutcheon Assy. (1) chrome
includes:-
7081-001-01 "diamond dot" emblem
7008-123-01 ASTOR metcal
7084-088-06 Escutcheon (1) ducoed
7084-084-04 Panel Escutcheon (1) moulded
7198-178-20 Screw (4) $\frac{3}{8}$ "x3/16" Whit.rd.hd.
7261-180-02 Washer (4) flat steel, $\frac{3}{8}$ "x3/16"
7262-512-01 Washer (4) shakeproof, 3/16" ext.
7148-304-11 Nut (4) 3/16" Whit.
4077-175-43 Battery Lead Assy. (1)
includes:-
1169-051-08 Lead - 24" required
7138-022-01 Lug (1) on end of lead
7113-001-01 Fuse Holder Body (1)
7225-012-01 Spring (1) fuse holder
7086-125-04 Contact (1) fuse holder
4071-010-01 Fuse (1) 3 amp
7124-425-11 Knob (2) tuning and volume, front
7124-424-01 Knob (2) antiference and tone, rear
4077-044-01 Earth Lead

INTERFERENCE ELIMINATION ACCESSORIES

4009-024-16 .5uF Capacitor (1) generator by-pass
409-024-25 .5uF Capacitor (1) ignition coil by-pass

COMPONENTS SUPPLIED WITH RECEIVER

7070-115-11 Dial Reading (1)
7119-046-01 Filler Bar (1) push button opening
7152-272-01 Speednut (2) filler bar fastening
7065-011-01 Fuse Holder Cover (1)
7086-125-04 Contact (1) fuse holder.