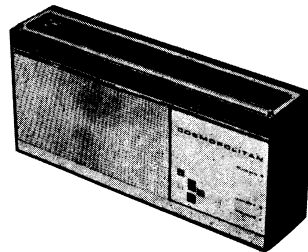


MODEL RL300  
(AND PP3/01)

“COSMOPOLITAN”

RL300



SPECIFICATIONS

Tuning Range .....	520-1620 KHz
Intermediate Frequency .....	455 KHz
Power Supply — Battery .....	Type 2364 (9V)
Mains Unit .....	NP 1481
Lead Assy. ....	NP 1480/4
Battery Consumption .....	20-26mA (no signal)
Modules .....	UF411, UA411

MODULE REMOVAL

Unscrew two retaining screws and remove cabinet back. The R.F. module can be checked from the underside by unclipping from its mounting lid and tilting base upwards with leads intact.

Remove audio module from its side mounting plastic clips. Both modules can now be conveniently positioned for checking visually or electrically.

R.F. ALIGNMENT

Connect signal generator via a coupling loop around the aerial rod. Adjust volume control to maximum. Fully close tuning capacitor and position dial cursor to stop mark on dial scale. Peak oscillator coil core at 520 KHz. Fully open tuning capacitor and peak oscillator trimmer at 1620 KHz. Repeat these two operations until band end setting is correct.

Tune to 600 KHz and adjust aerial coil for maximum output. Tune to 1500 KHz and peak aerial trimmer. Repeat last two adjustments as necessary.

I.F. ALIGNMENT

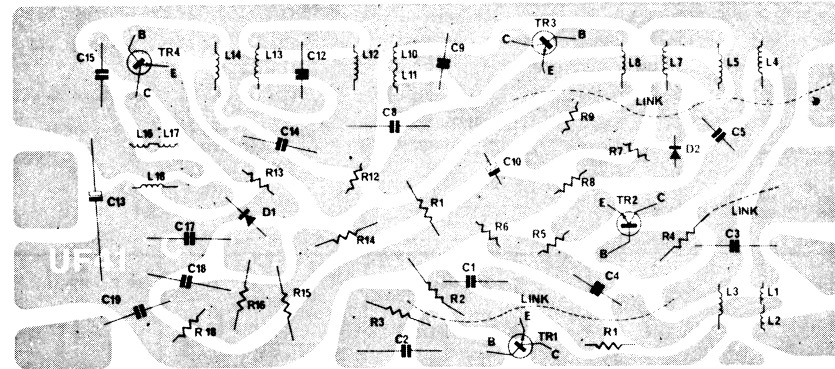
Connect signal generator via I.F. dummy to base of TR1. Adjust volume control to maximum.

1. Peak all IFT's at 454 KHz. Repeat.
2. Re-peak IFT.2 Secondary at 459 KHz.
3. Re-peak Detector Coil at 457 KHz.

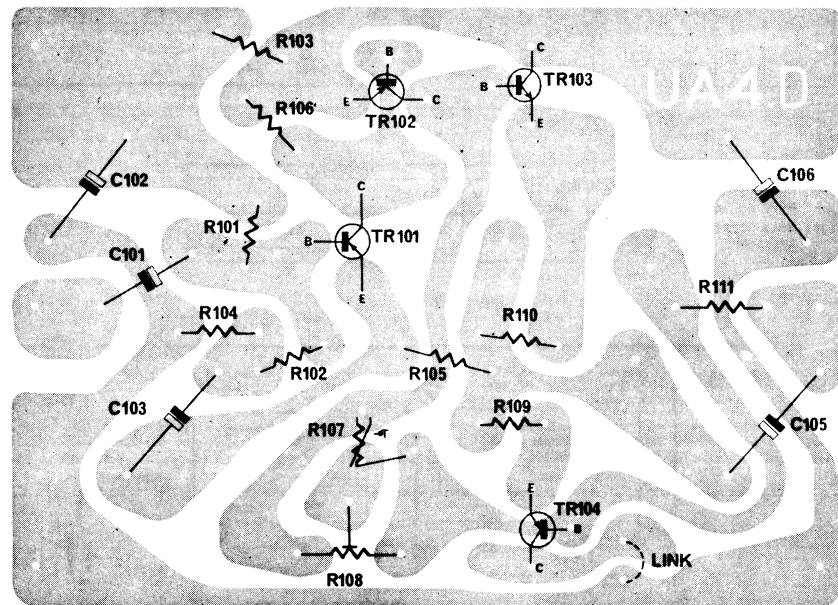
OUTPUT TRANSISTOR ADJUSTMENT

The quiescent current of the output transistors can be adjusted by means of R108 and measured via the metering point provided. Under no signal conditions, the current should be adjusted in accordance with the following table.

Temp. °F	Quiescent Current (mA)
50	6.5
55	6.6
60	6.7
65	6.8
70	6.9
75	7.0
80	7.1
85	7.2
90	7.3
95	7.4
100	7.5
105	7.6
110	7.7
115	7.8

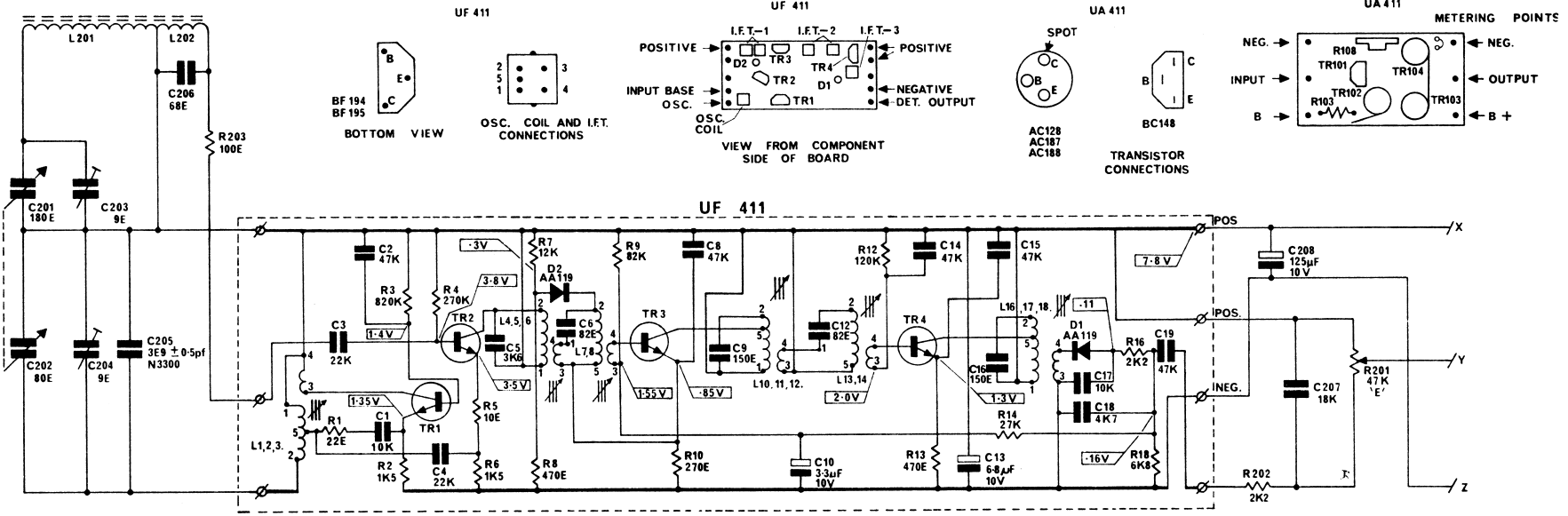


UF 411



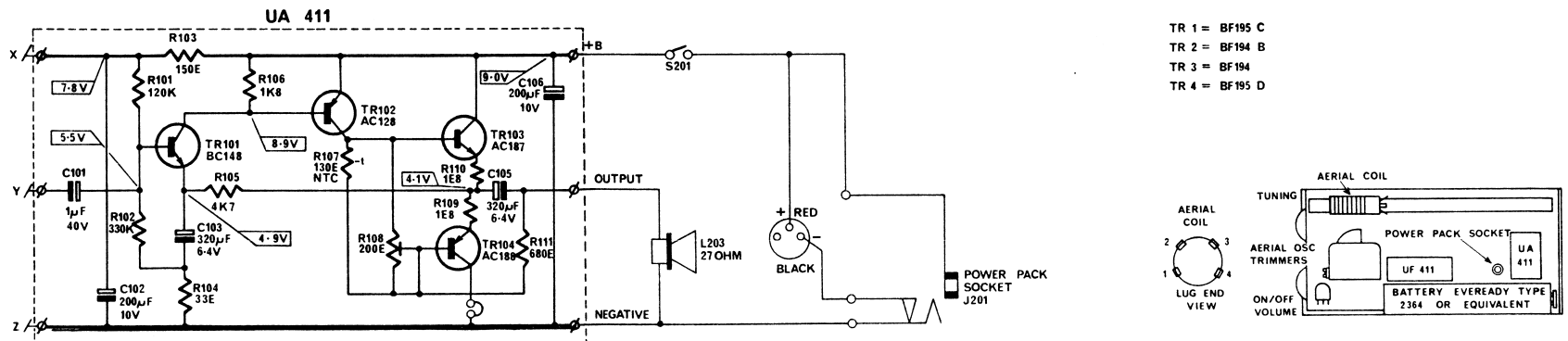
UA 411

DIAGRAM CODE :						UNIT MODEL: PP3/01 RL 300						CIRCUIT CODE: 07-275/11			
12	13	14	15	16	17	18	19	20	21	22	23	24	25	26	



S201 IS MOUNTED ON VOLUME CONTROL  
R 201.  
L203 ROLA TYPE 53 DO3 / 277 / 27  
SPEAKER

VOLTAGES	
R	± 10 %
C	CERAMIC BYPASS +80% - 20%
TOLERANCES	



- TR 1 = BF195 C
- TR 2 = BF194 B
- TR 3 = BF194
- TR 4 = BF195 D