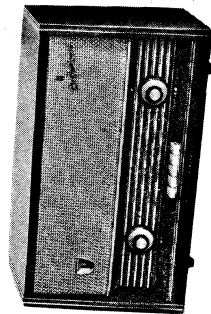


NATIONAL PANASONIC

RADIO SERVICE MANUAL



MODEL RE-484

4-BAND 6-TUBE TABLE MODEL RADIO

SPECIFICATIONS

Frequency Range:	MW 525~1605KC (571~187m) SW ₁ 1.6~4.5MC (136.4~42.9m) SW ₂ 4.5~12MC (42.9~13.6m) SW ₃ 12~26.1MC (25~11.5m)
Intermediate Frequency:	455KC
Tubes:	6BE6 Converter 6BA6 IF Amplifier 6AV6 Detector, AVC & AF Amplifier 6BQ5 Output 6X4 Rectifier 6DA5 Tuning Indicator
Sensitivity:	MW 20 μ V for 50mW Output SW ₁ 20 μ V for 50mW Output SW ₂ 30 μ V for 50mW Output SW ₃ 30 μ V for 50mW Output
Power Output:	3.5 Watt Undistorted 5 Watt Maximum
Power Source:	AC 50~60c/s 110V/200V/225V/250V
Power Consumption:	48W
Speaker:	Two 16cm (6 $\frac{1}{2}$ ") PM Dynamic Speaker
Dimensions:	576(Wide) \times 343.5(High) \times 241(Deep) mm (22 $\frac{1}{2}$ " \times 13 $\frac{1}{2}$ " \times 9 $\frac{1}{2}$ " mm)
Weight:	9.3 kgs. (20 lbs. 8 ozs.)

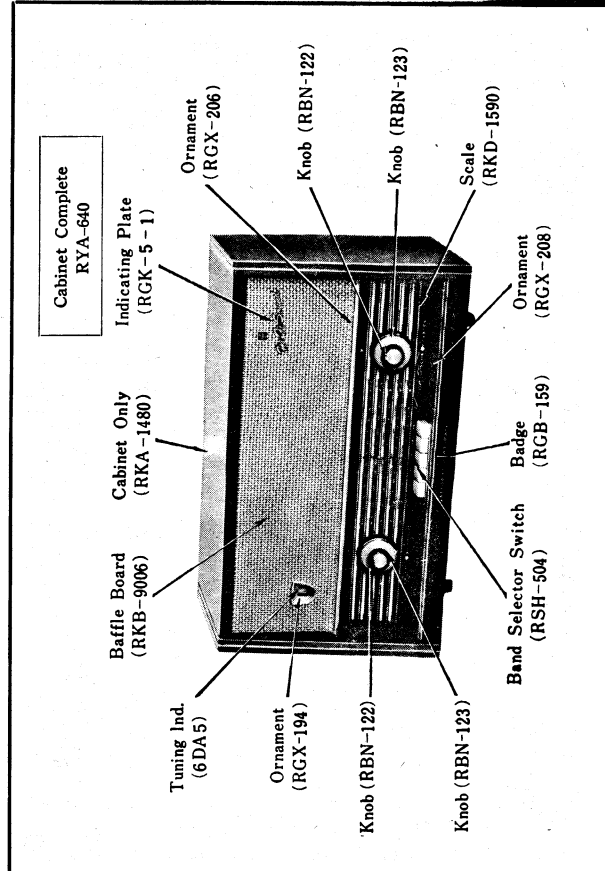


Fig. 5 Cabinet & Appearance Parts Identification.

