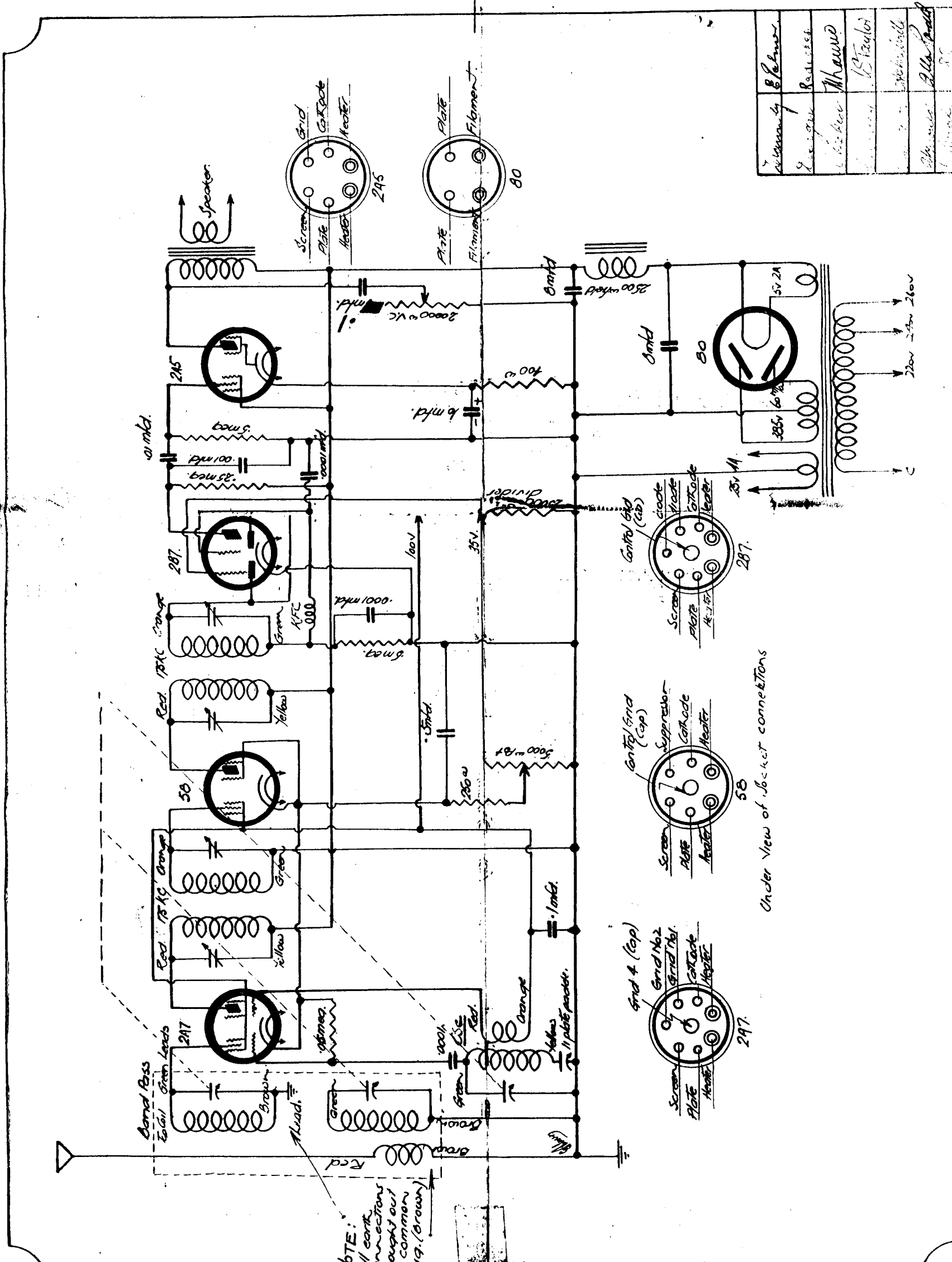


# RADIOKES KIT-SET TYPE 12-39

## BAND PASS 5 VALVE

### CIRCUIT DIAGRAM



Designed by	E. Palmer
Designed	R. J. ...
Checked	M. Howard
Approved	B. Taylor
Tested	M. ...
Released	A. ...

# RADIOKES KIT-SET TYPE 12-39

## BAND PASS 5 VALVE

**FEATURES :—** This Kit-Set has been designed for those manufacturers who want the maximum performance possible with a 4/5 valve superheterodyne.

The special magnetic band-pass tuning system and 175 k.c. I.F. amplifier ensure high gain and a very high degree of selectivity.

The sensitivity is well under one microvolt throughout the tuning range.

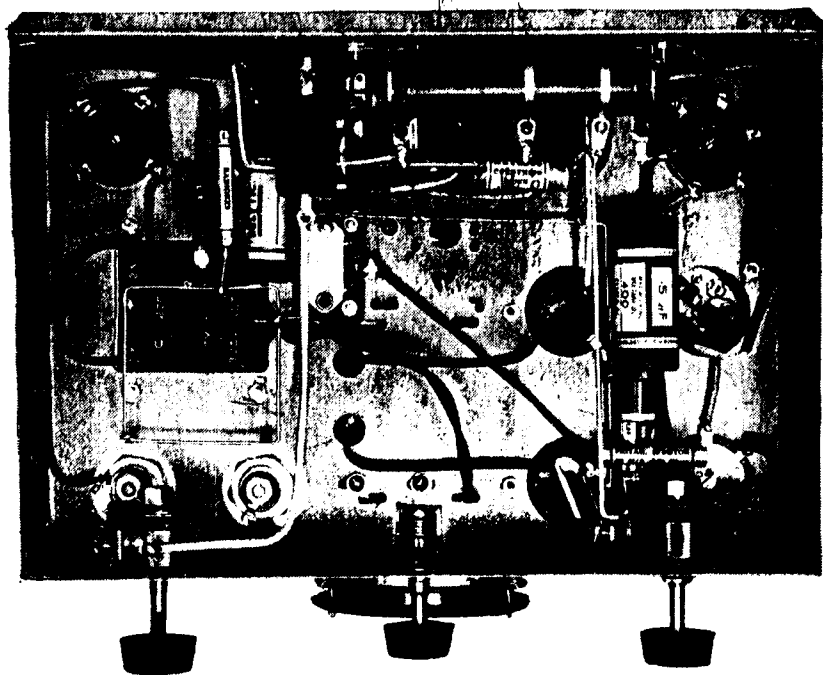
The performance of this receiver on distant stations is far better than that of the average 4/5, and rivals that of most six and seven valve sets.

Summarily, the 12-39 Kit-Set has the four features most desirable in a manufacturers' set:—

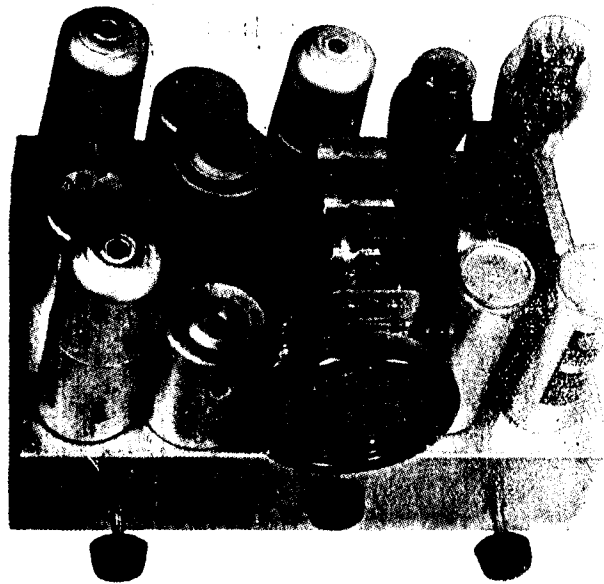
- No. 1 Performance.
- No. 2 Attractive appearance.
- No. 3 Reliability—freedom from service.
- No. 4 Low cost.

### PARTS LIST:—

- |   |   |
|---|---|
| 1 Moneysaver chassis 12-44, steel.  | 2 3.5v. pilot lamps.                                |
| 4 Terminals, small N.P. type.   | 3 Grid clips.                                       |
| 1 Rubber bush for flex lead.  | 2 .5 meg. carbon resistors.                         |
| 3 Knobs.  | 1 .25 n.eg. carbon resistor.                        |
| 1 5-39 kit B.P. coil, oscillator, 2-175 k.c. I.F. trans. 5-20 type, 1 6-4OR padder. | 1 400 ohm. Maxome resistor, 100 m.a., New type.     |
| 1 5,000 ohm. potentiometer (with insulating washer).                                | 1 250 ohm. Maxome resistor, 100 m.a., New type.     |
| 1 20,000 ohm. tone control.   | 1 50,000 ohm, resistor, carbon type.                |
| 1 3 gang condenser, Saxon, std. spindle.  | 1 25,000 ohm. voltage divider, Radiokes 4-25.       |
| 2 8 mfd. Electrolytic condensers, 500 V.  | 1 R.F. Choke, type 3-20.                            |
| 1 1/2 mfd. condenser.   | 10 1/8 in. screws, 1/2 in. long, round head, brass. |
| 3 .0001 mfd. condenser.   | 10 1/8 in. nuts, brass, hexagon.                    |
| 1 .001 mfd. condenser.  | 3 1/4 in. x 3/8 in. screws, R.H. Steel.             |
| 1 .1 mfd. condenser.  | 6 3/8 in. nuts, steel.                              |
| 1 .5 mfd. condenser.  | 6 Solder lugs.                                      |
| 1 .01 Mica condenser, for coupling.   | 2 yds. tinned copper wire.                          |
| 1 10 mfd. Dulytic condenser, 25 volt test.  | 4 yds. hook up wire.                                |
| 1 Power transformer, 1-50 with 2.5 volt filament.                                   | 3 yds. power flex.                                  |
| 2 4 pin sockets.  | <b>VALVES REQUIRED:</b>                             |
| 2 6 pin sockets.  | 1 2A7, 1 58, 1 2B7, 1 2A5, 1 280.                   |
| 2 7 pin sockets, small.   | <b>SPEAKER REQUIRED:</b>                            |
| 3 Valve shields, No. 7 (same as Money-saver).                                       | 2,500 ohm. field input to suit single 2A5 valve     |
| 1 Aerovision Clock dial, 100/0 7-14.  |   |



UNDER CHASSIS WIRING



FRONT AND TOP OF CHASSIS