



# RADIO CORPORATION PTY. LTD.

DIVISION OF ELECTRONIC INDUSTRIES LTD.

126-130 GRANT STREET, SOUTH MELBOURNE, S.C.4.

## TECHNICAL BULLETIN

BULLETIN R-15.

File: Installation  
Receiver

Date: 20/4/50.

Page: 1.

SUBJECT— INSTALLATION INSTRUCTIONS

for fitting

MODEL "CS" 12 VOLT, 6 VALVE CAR RADIO INTO THE AUSTIN A40 CAR.

### ANTENNA.

The Antenna used is a four section telescopic whip type, which is mounted on the car fender (mudguard) in the position shown in the diagram.

### ASSEMBLY OF SUB UNIT TO FRONT OF RECEIVER CASE.

1. Insert shielded lead from receiver through large hole in sub unit and fasten the lug on this lead under the head of the screw on the corner of the 7-pin socket.
2. Insert 7-pin plug on lead from receiver through large hole in sub unit and fit to 7 pin socket.
3. Mount sub unit on to front of receiver can with the 5/32 inch dia. screws supplied. Fit plug lead cover plate to side of sub unit with one 5/32 inch dia. screw and one self tapping screw supplied in accessory package.

### INSTALLATION OF RECEIVER INTO CAR.

1. Drill two holes in firewall and one hole in front face of receiver box as shown in diagram. Clean off all paint, varnish, grease or duco for approx. half an inch around the holes to provide a good electrical contact.
2. Remove windscreen wiper switch and refit in position indicated in diagram.
3. Drill two 9/64 in. dia. holes on  $4\frac{3}{8}$  in. centres centrally in bottom lip of panel where wiper switch was previously mounted—refer diagram.
4. Assemble control head in above position with the two self tapping screws supplied in accessory package. Insert spacer between control head and lip of panel—refer diagram.
5. Insert a small screwdriver through hole in receiver case into rubber moulding on condenser gang shaft and turn fully clockwise.
6. Mount receiver in position in receiver box and securely clamp in position—refer diagram.
7. Turn tuning knob until pointer reaches max. travel on dial, fully clockwise, then insert splined end of tuning control cable through hole in receiver can into rubber moulding on condenser gang shaft. Clamp cable under small clip on sub unit.
8. Insert end of volume control cable into collar on volume control and securely tighten grub screws.
9. Connect A+ lead from control head to terminal on junction strip on firewall of car.
10. Connect dial lamp lead from control head to socket on thin lead from sub unit.

### INSTALLATION OF SPEAKER.

1. In the centre of the header bar will be found a hole approx. 4 in. dia and covered with fabric. Cut out the fabric covering this hole.
2. Place speaker in position in hole and mark position of four mounting holes (2 holes horizontal and 2 perpendicular). Drill four holes 0.089 in. dia. in these positions.
3. Remove fascia strip from right hand windscreen pillar.
4. Place speaker lead through cardboard ring supplied with accessories.

5. Feed speaker lead through hole in header board, along behind board and down right hand windscreen pillar through hole in corner of panel and through one of the existing holes in the firewall into the receiver box.
6. Connect speaker lead to receiver speaker socket.
7. Place speaker in position on header board, fit grille and mount in position with the four No. 4 self-tapping screws provided. The card-board gasket must be between the speaker frame and the header board.
8. Refit fascia strip.

#### INTERFERENCE ELIMINATION

No spark plug suppressors are required.

Distributor Suppressor : Insert a distributor suppressor, part No. PR314, in the high tension lead from the coil a few inches from where the lead enters the distributor. Make sure the lead is fitted well into the suppressor and that good contact is made. Securely bind the lead at both ends of the suppressor with adhesive tape.

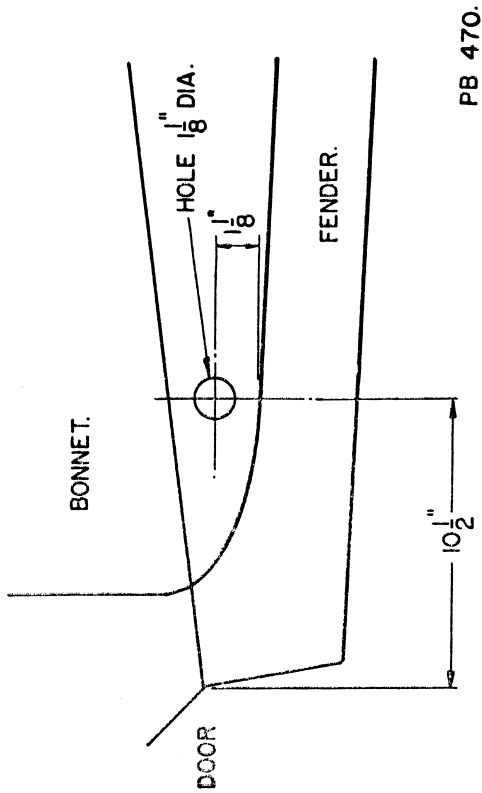
Ignition Coil Condenser : Install a metal clad .5 MFD. by-pass condenser part No. PC545 on the battery terminal of the ignition coil keeping the lead as short as possible. The condenser is mounted under the bolt which fastens the ignition coil mount strap. The other side of the condenser is internally connected to the condenser case which forms the other contact to the car when mounted.

Generator Condenser: Install a .5 MFD. metal clad condenser part No. PC545 on the generator. Connect the lead from the condenser to the armature terminal not the field terminal, make the lead as short as possible. The condenser is mounted on the generator mount bolt nearest to the armature terminal.

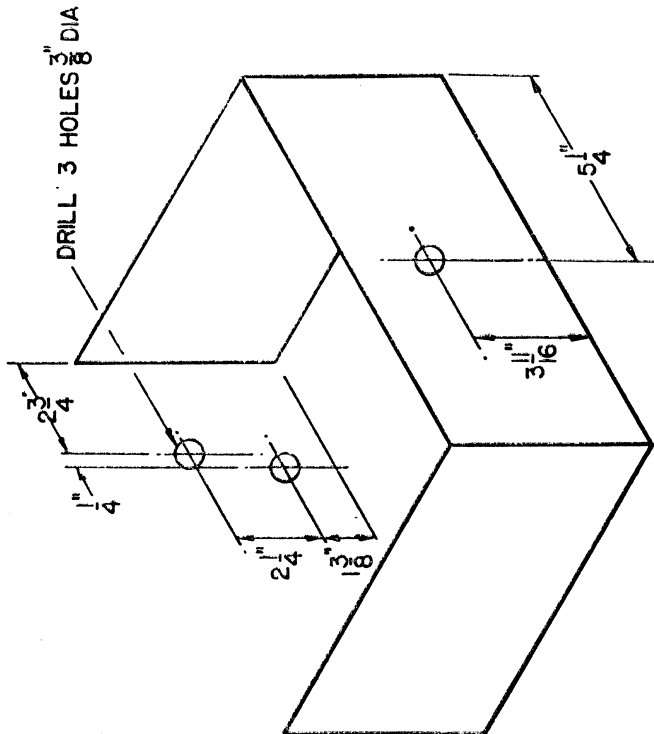
NOTE: The nuts and mounting positions of the by-pass condensers must be entirely free of paint, grease or duco varnish to ensure a good electrical contact.

Parts List	Part No.	
Antenna	: Antenna only, less lead-in, fully extended 49", fully retracted 15"	M173
Antenna Lead-in	: 36" overall length	M171
Volume Control	: .5 megohm	PR661
Speaker	: 5" round type, less leads, shielding braid, nylex covering and plug	K124
Speaker Plug	: 2 pin	336/30C
Dist. Suppressor	: Screw type, 12 volt	PR314
By-pass Cond.	: .5MFD. 200V. DCW. Metal clad	PC545
Fuse	: 15 amp.	PM219
Pointer Assy.	:	A103/323
Control Knob	:	15/306-1
Knob Spring	:	86/71
7 Pin Socket Assy.	: On sub unit	A104/323
7 Pin Plug Assy.	: On receiver lead	104/58-1
Dial Reading	:	14/665-1
Dial Lamp	: 6-8V. 0.3A. min. bay. base G3½ bulb:	M127 or 0.15Amp. PM220
Escutcheon	: Control unit	A109/324
Escutcheon	: Speaker	16/324
Rear Mount Nut	: On receiver case rear mount screw	3/478-14
2BA Screw	: Mounts control head	2/415
Control Cable Assy.:	Volume	A105/324
Control Cable Assy.:	Tuning	A104/324
Cable Clamp	:	45/73-1
Connector	: Male, dial lamp lead	32/304
Connector	: Female, dial lamp lead	39/305

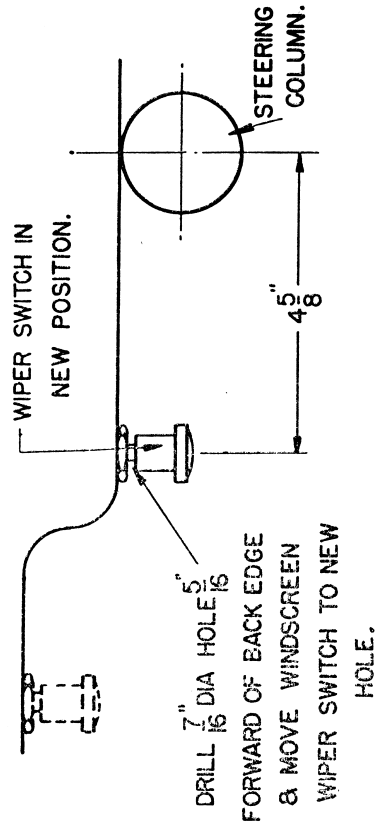
Antenna Accessory Package A105/671 contains rubber tube 35/671, sealing washer 34/671 and mount washer 33/671; these parts are for water-proofing lead-in connection to base of antenna on underside of fender.

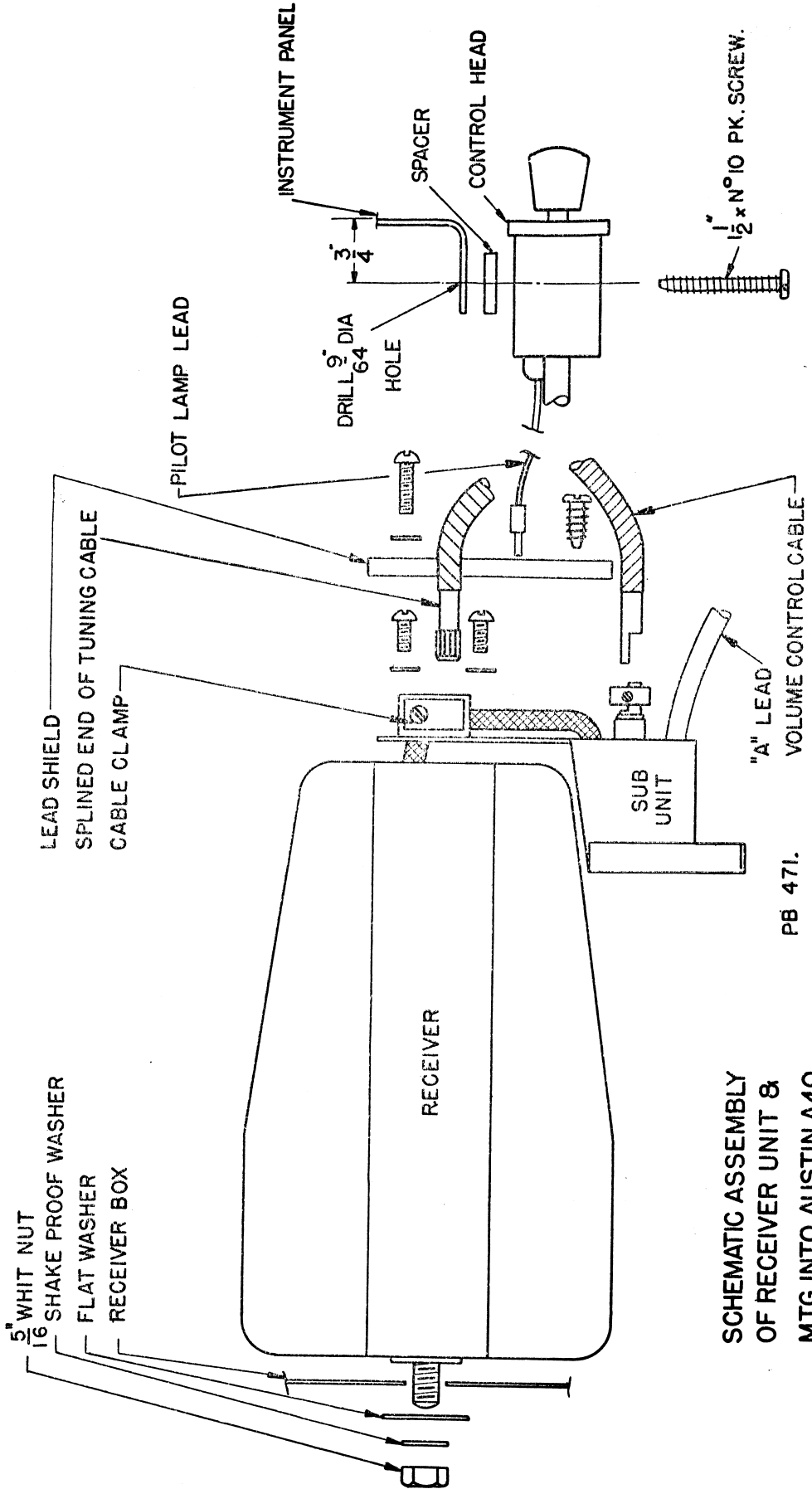


TOP VIEW OF RIGHT HAND SIDE FENDER  
SHOWING AERIAL MTG HOLE.



DRILLING OF RECEIVER BOX.





SCHEMATIC ASSEMBLY  
OF RECEIVER UNIT 8 &  
MTG. INTO AUSTIN A40