



RADIO CORPORATION PTY. LTD.

DIVISION OF ELECTRONIC INDUSTRIES LTD.

126-130 GRANT STREET, SOUTH MELBOURNE, S.C.4.

BULLETIN: R-13

File: Installation
Receiver

Date: 16/12/49.

Page: 1.

TECHNICAL BULLETIN

SUBJECT-

INSTALLATION INSTRUCTIONS

for fitting

MODEL "CS" 12 VOLT 6 VALVE CAR RADIO INTO 1949-50 AUSTIN A70 CAR

Antenna

The antenna used is a four section telescopic whip type, which is mounted on the car fender (mudguard) in the position shown in the diagram.

1. Centre punch a mark and drill a 1 1/8 in. dia. hole. Clean off all paint, grease and burrs for approx. 1/2 in. on the underside of the hole with a sharp-edged tool or emery paper to ensure proper electrical earthing of the clamp washer.
2. Remove the lead-in, lock nut, clamp ball and clamp washer from the antenna base. Insert the antenna base into the top of the hole. Hold the antenna vertical and turn the formed rubber washer on the antenna base so that it fits the form of the fender.
3. On the underside of the fender reassemble the clamp washer, clamp ball, rubber washer, metal washer and lock nut to the antenna base. Tighten the lock nut securely, making sure the antenna remains vertical and the formed rubber washer follows the form of the fender.
4. Reassemble the lead-in cable to the base of the antenna, making sure the knurled gland nut on the lead-in is securely tightened.
5. Slip the rubber tubing over the antenna lead-in and fit end of tubing over the metal washer above the lock nut on the antenna base. Make sure the rubber tubing is pushed well up to the under side of the fender.
6. Insert the other end of the lead-in and rubber tubing through hole in partition between engine and wheel.

Assembly of Sub Unit to Front of Receiver

1. Insert shielded lead from receiver through large hole in sub unit and fasten the lug on this lead under the head of the screw on the corner of the 7 pin socket.
2. Insert 7 pin plug on lead from receiver through large hole in sub unit and fit to 7 pin socket.
3. Mount sub unit on to front of receiver can with the 5/32 inch dia. screws supplied. Fit plug lead cover plate to side of sub unit with one 5/32 inch dia. screw and one self tapping screw.

Installation of Receiver into Car

1. Drill hole in firewall and hole in front face of receiver box as shown in diagram. Clean off all paint, grease or duco for 1/2 inch around the hole in the receiver box to provide a good electrical contact.
2. Remove the six control knobs from along the bottom edge of the instrument panel.
3. Remove centre section of instrument panel by unscrewing the two screws in bottom lip of panel.
4. Before removing moulded escutcheon and metal grille from instrument panel, mark the grille along bottom edge of centre bar of escutcheon.
5. Remove the six speed nuts from behind the panel holding escutcheon in position. Remove metal grille and cut off bottom section of grille 1/8 inch above the scribed line.
6. Refit grille and escutcheon to centre section of instrument panel.
7. Disconnect the receiver A+ lead at the fuse holder and connect the lead end to the second terminal from the left on the rear of the ignition switch viewing switch from the key end.
8. Assemble control head to instrument panel by inserting control cables through opening provided. Immediately they are through opening cross the cables behind the wiring loom and enter ends through holes in firewall. Mount control head to panel with two No. 2BA screws.

9. Mount speaker in position on instrument panel with two 1/8 inch dia. screws supplied. Insert speaker lead through hole in firewall.
10. Insert a small screw driver through hole in receiver can into moulding on condenser gang shaft and turn fully clockwise.
11. Place receiver in receiver box under car bonnet. Fit speaker plug to speaker socket on side of can. Fit antenna lead-in to receiver lead-in socket.
12. Mount receiver in position in receiver box and securely clamp in position.
13. Turn tuning knob until pointer reaches max. travel on dial fully clockwise, then insert splined end of tuning control cable through hole in receiver can into rubber moulding on condenser gang shaft. Clamp cable under small clip on sub unit.
14. Insert end of volume control cable into collar on volume control and securely tighten grub screws.
15. Insert fuse and insulating tube into fuse holder and connect to A+ lead from ignition switch. Connect lead-in to base of antenna.

Interference Elimination

No spark plug suppressors are required.

Distributor Suppressor: Insert a distributor suppressor, part No. PR314, in the high tension lead from the coil a few inches from where the lead enters the distributor. Make sure the lead is fitted well into the suppressor and that good contact is made. Securely bind the lead at both ends of the suppressor with adhesive tape.

Ignition Coil Condenser: Instal a metal clad .5 NFD. by-pass condenser, part No. PC545 on the battery terminal of the ignition coil, keeping the lead as short as possible. The condenser is mounted under the bolt which fastens the ignition coil mount strap. The other side of the condenser is internally connected to the condenser case which forms the other contact to the car when mounted.

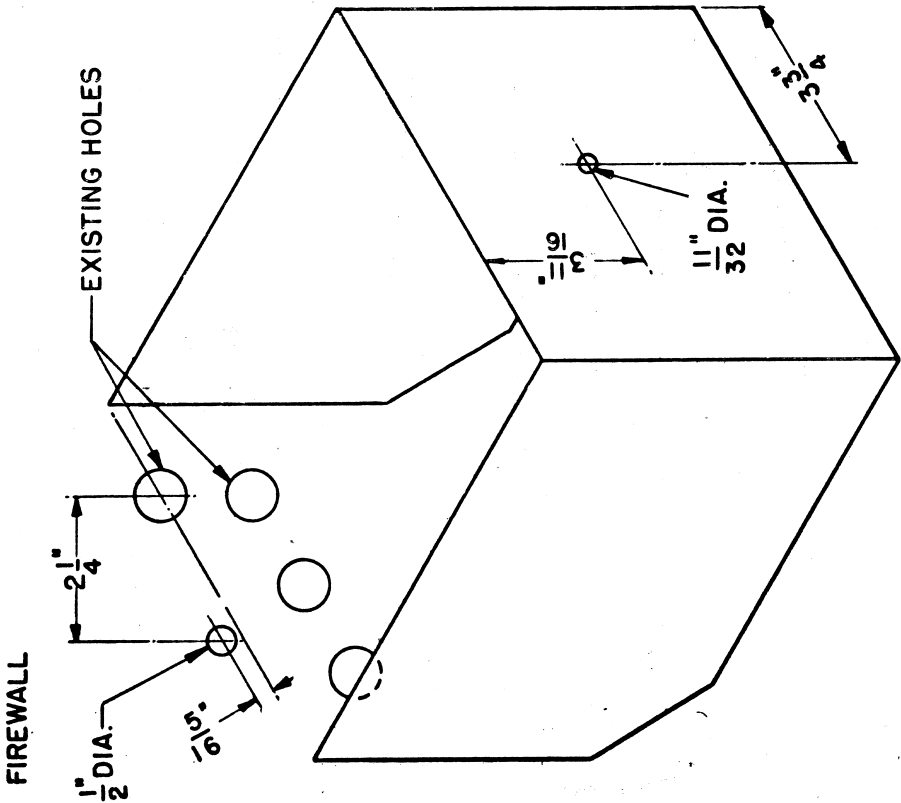
Generator Condenser: Instal a .5 MFD. metal clad condenser, part No. PC545, on the generator. Connect the lead from the condenser to the armature terminal, not the field terminal; make the lead as short as possible. The condenser is mounted on the generator mount bolt nearest to the armature terminal.

Note: The nuts and mounting positions of the by-pass condensers must be entirely free of paint, grease or duco varnish to ensure a good electrical contact.

Parts List

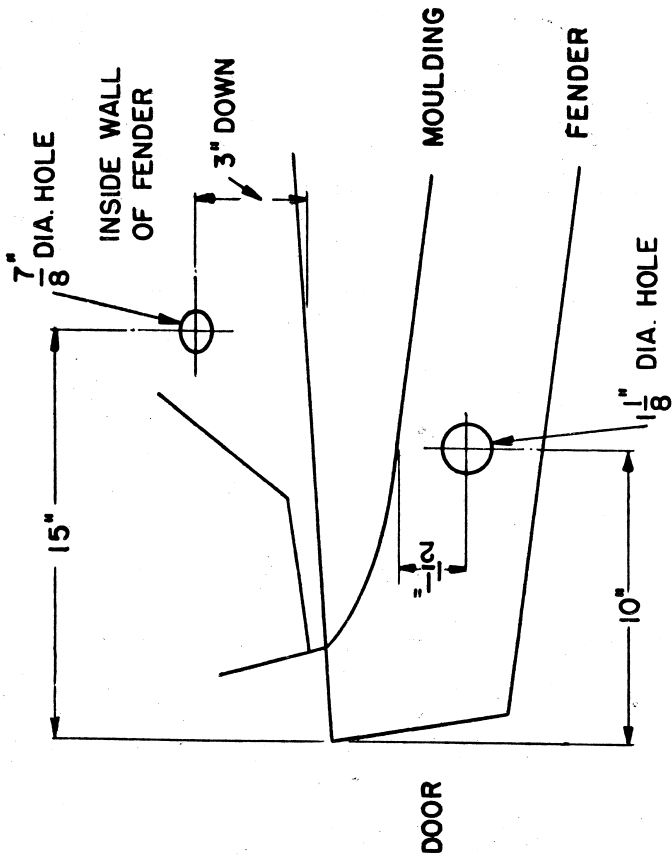
		Part No.
Antenna	: Antenna only, less lead-in, fully extended 49", fully retracted 15"	M173
Antenna Lead-in	: 36" overall length	M171
Volume Control	: .5 megohm	PR661
Speaker	: 5" round type, less leads, shielding braid, nylex covering and plug	K124
Speaker Plug	: 2 pin	336/30C
Dist. Suppressor	: Screw type, 12 volt	PR314
By-pass Cond.	: .5MFD. 200V. DCW. Metal clad	PC545
Fuse	: 15 amp.	PM219
Pointer Assy.	:	A103/323
Control Knob	:	15/306-1
Knob Spring	:	86/71
7 Pin Socket Assy.	: On sub unit	A104/323
7 Pin Plug Assy.	: On receiver lead	104/58-1
Dial Reading	:	14/665-1
Dial Lamp	: 6-8V. 0.3A. min. bay. base G3½ bulb	M127
Escutcheon	:	1/324
Rear Mount Nut	: On receiver case rear mount screw	3/478-14
2BA Screw	: Mounts control head	2/415
Control Cable Assy.	: Volume	A105/324
Control Cable Assy.	: Tuning	A104/324
Cable Clamp	:	45/73-1
Connector	: Male, dial lamp lead	32/304
Connector	: Female, dial lamp lead	39/305

Antenna Accessory Package A105/671 contains rubber tube 35/671, sealing washer 34/671 and mount washer 33/671; these parts are for water-proofing lead-in connection to base of antenna on underside of fender.

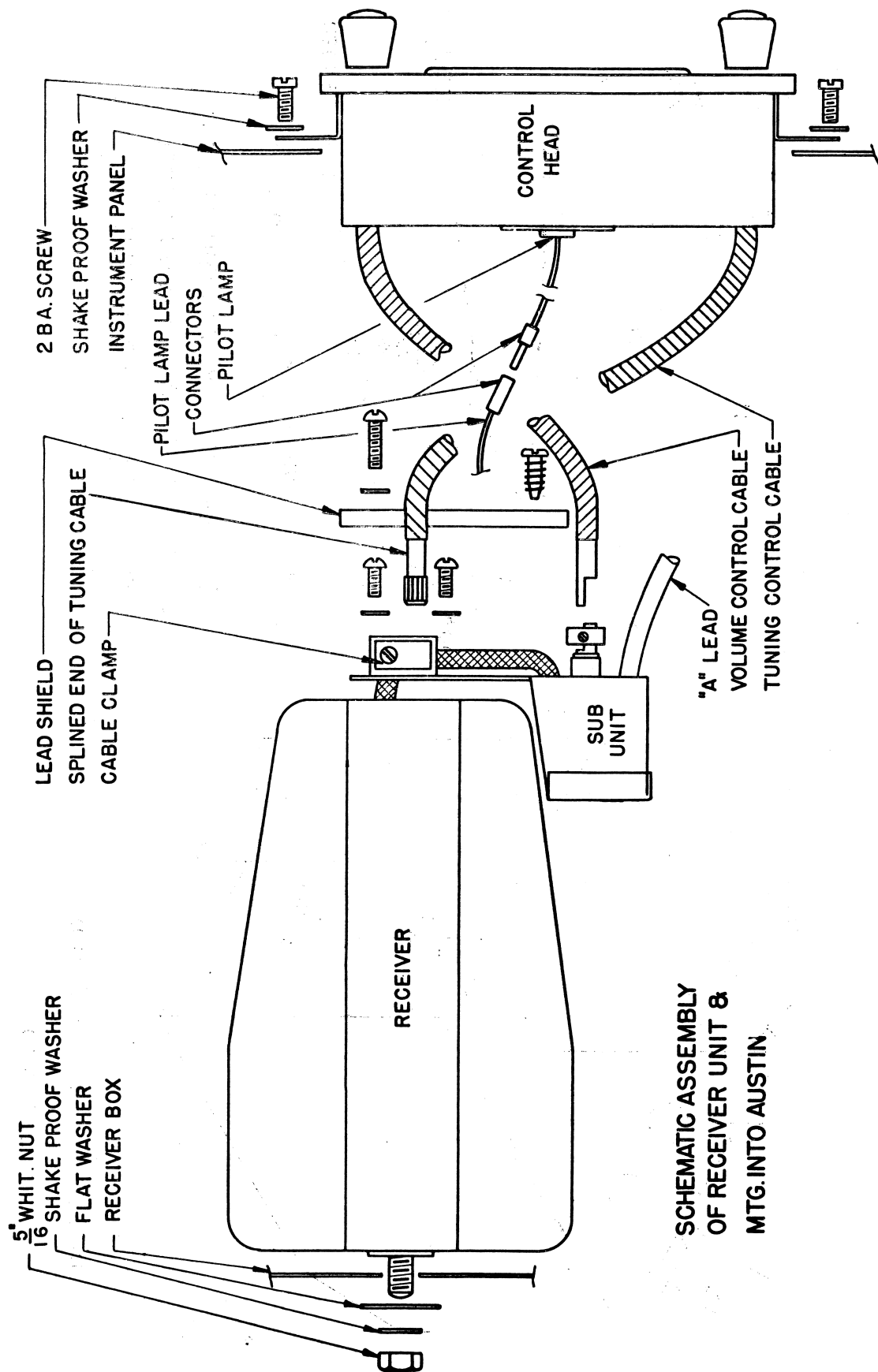


DRILLING OF RECIEVER BOX

AUSTIN A70



TOP VIEW WITH BONNET OPEN OF RIGHT
HAND SIDE FENDER SHOWING AERIAL
MTG. HOLE AND LEAD IN HOLE.



P8 461

SCHEMATIC ASSEMBLY
OF RECEIVER UNIT &
MTG. INTO AUSTIN