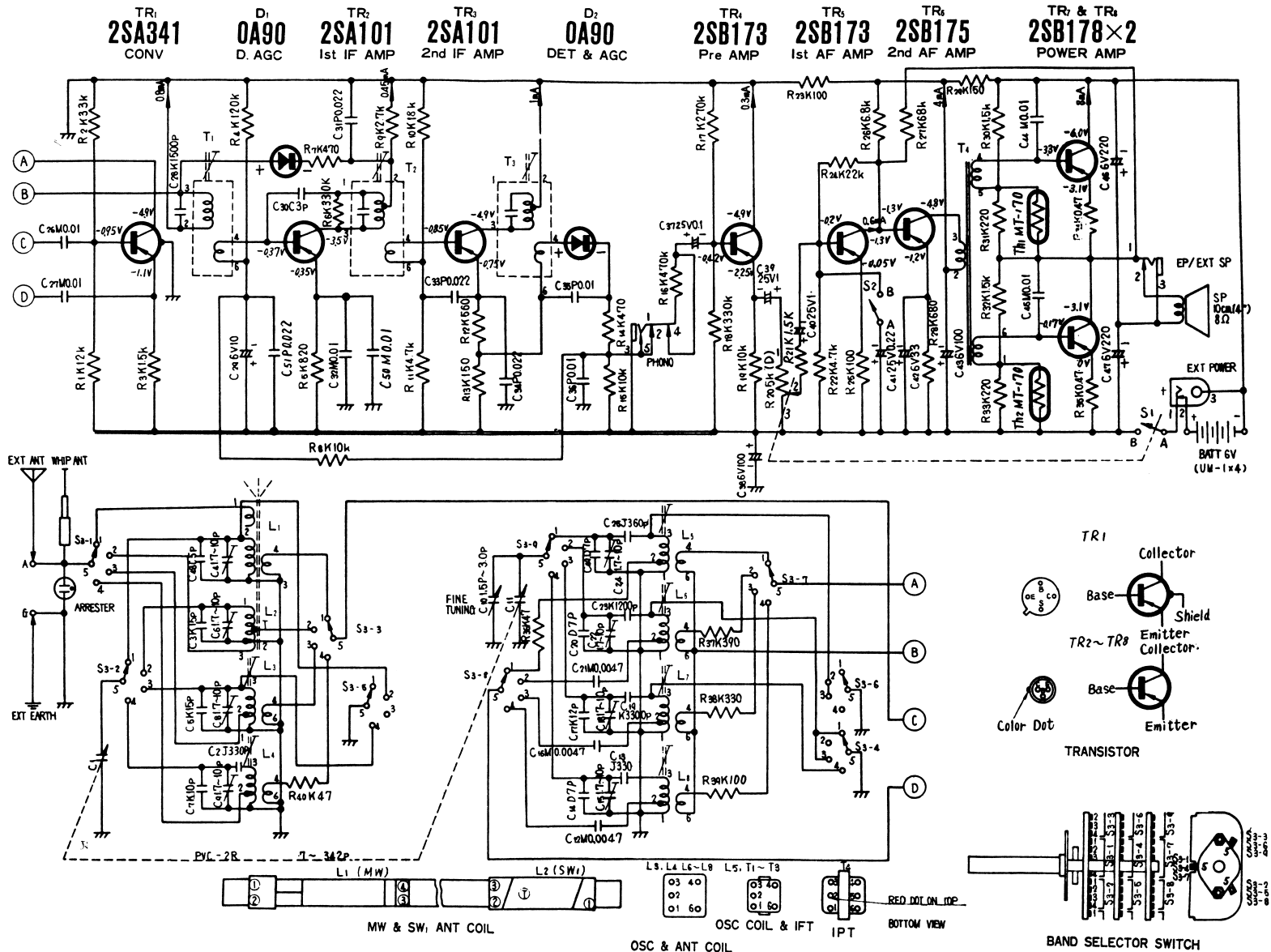
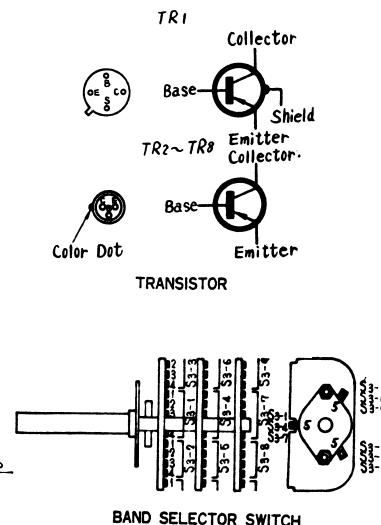
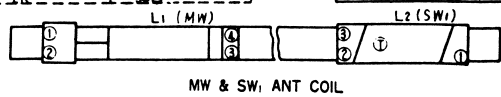
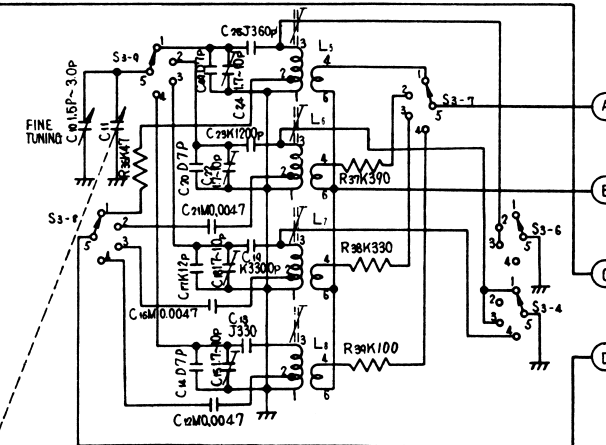
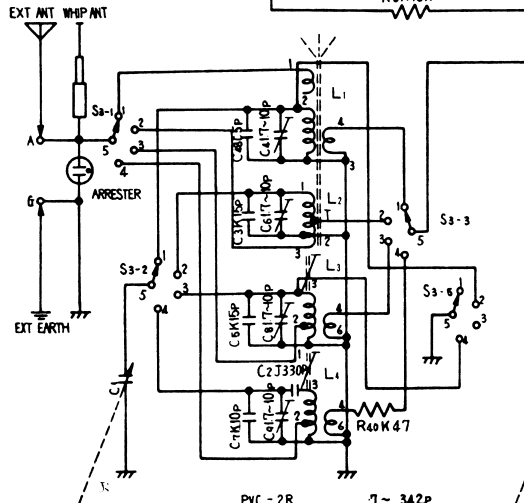
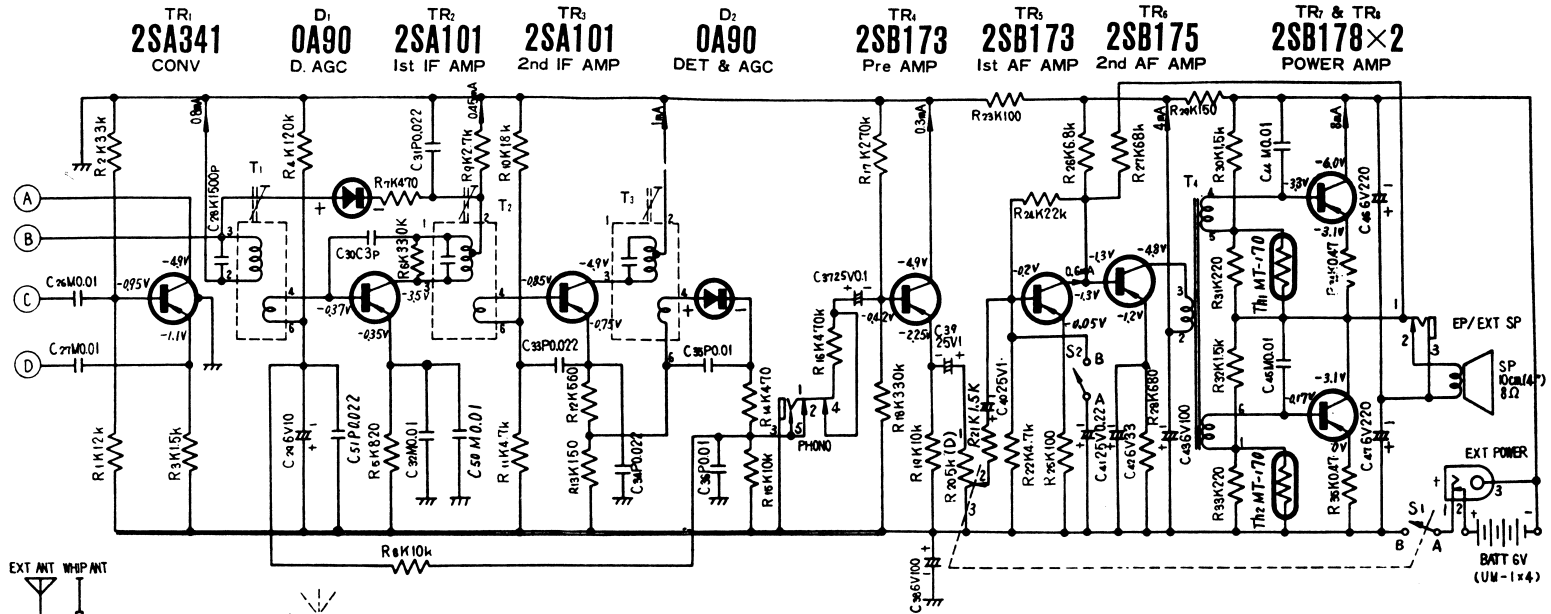


- Notes:**
1. All resistor values in ohms (K=1000 Ω).
 2. All capacitor values in micro farad (P=mmf).





Notes:

- S1: Power source switch in "OFF" position.
- S2: Tone switch in "HIGH" position.
- S3-1~S3-9: Band selector switch in "MW" position.
- DC voltage measurements are taken with circuit tester (10K Ω /V) from positive terminal of battery.
- Capital letters (M, K, J, P, C, D) in the circuit diagram show allowable tolerances of resistors and capacitors as follows: M=±20% K=±10% J=±5% P=+100% C=±0.25PF D=±0.5PF
- Battery current: No Signal 18 mA
Maximum Output 150 mA
- PF=pico farad=mmf
 μ F=micro farad=mf
- All resistor values in ohms (K=1000 Ω).
- All capacitor values in micro farads (P=mmf).