



RADIO CORPORATION PTY. LTD.

DIVISION OF ELECTRONIC INDUSTRIES LTD.

126-130 GRANT STREET, SOUTH MELBOURNE, S.C.4.

TECHNICAL BULLETIN

BULLETIN: R-16.

File: Installation
Receiver

Date: 20/4/50.

Page: 1.

SUBJECT-

INSTALLATION INSTRUCTIONS

for fitting

MODEL "CR" 6 VOLT 6 VALVE CAR RADIO INTO THE HOLDEN CAR.

ANTENNA.

The antenna used is a four-section, telescopic whip type, which is mounted on the top corner of the cowl on the passenger side in the position shown in the diagram.

ASSEMBLY OF SUB UNIT TO RECEIVER CASE.

1. Remove top cover from control head by unscrewing the six self-tapping screws around the edges of the top cover.
2. Insert a small screwdriver through hole in receiver can into rubber moulding on condenser gang shaft, and turn fully clockwise.
3. Turn tuning control knob on sub unit fully clockwise until pointer reaches max. travel.
4. Insert 7-pin plug lead and shielded lead from receiver through large hole in rear of sub unit.
5. Insert splined end of tuning knob shaft through hole in receiver case into rubber moulding on condenser gang shaft.
6. Fasten rear of sub unit to receiver case with four $\frac{1}{4}$ in. x $\frac{5}{32}$ in. Whit. screws supplied in accessory package.
7. Connect lug on end of shielded A+ lead from receiver under head of screw in corner of 7-pin socket on sub unit. Fit 7-pin plug on to 7-pin socket.
8. Refit top cover to sub unit with the six self-tapping screws.

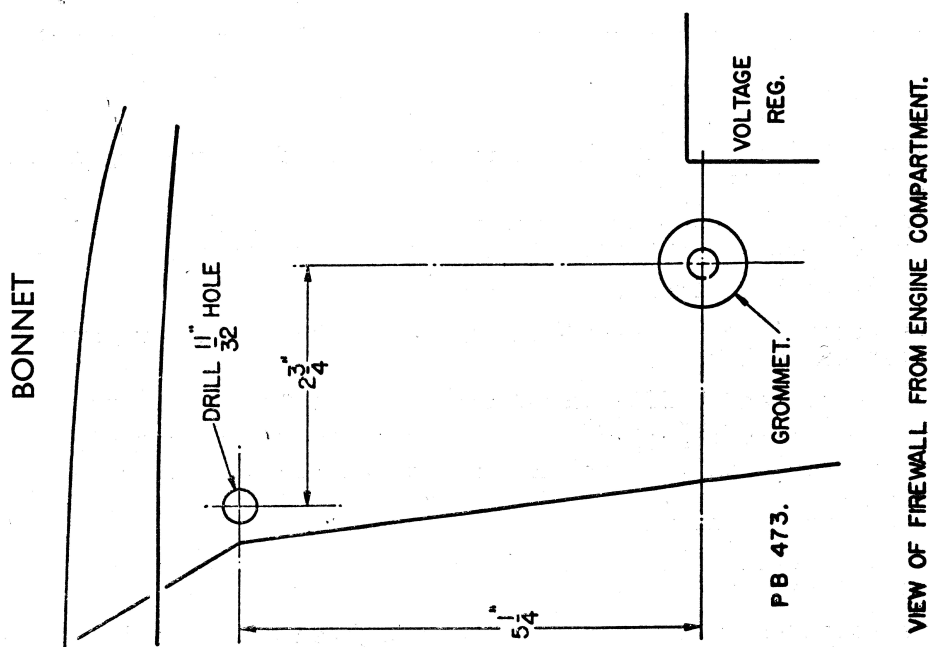
INSTALLATION OF RECEIVER UNIT.

1. Drill a $\frac{11}{32}$ in. dia. hole in the firewall from the engine side in the position shown in the diagram.
2. Assemble rear bracket in position on firewall with $\frac{5}{16}$ in. bolt, flat washer, S/P washer and nut; do not tighten securely.
3. Remove escutcheon from car instrument panel.
4. Remove control knobs, stepped nuts, escutcheon and hex. nuts from receiver control head.
5. Place speaker and baffle in position behind grille in instrument panel. The fastening screws being fitted later.
6. Insert receiver unit up behind speaker and instrument panel. The spindles of the receiver control head to protrude through holes provided in instrument panel.
7. Fit rear bracket to stud on rear of receiver and refit two hex. nuts on control head spindles.
8. Square receiver unit up and securely tighten all nuts on the rear mount bracket bolts, and the two hex. nuts on the control head spindles.

9. Refit escutcheon, stepped nuts and control knobs.
10. Hold bottom lip of baffle down to lip of instrument panel and drill two 11/64 in. dia. holes through panel and baffle - refer diagram for position of holes.
11. Assemble baffle in position using the two 5/32 in. Whit. screws, S/P washers and nuts supplied in accessory package.
12. Connect antenna lead-in and speaker lead to receiver.
13. Connect A+ lead from control head to centre terminal on head lamp switch. Insert fuse into fuse holder in A+ lead.

INTERFERENCE ELIMINATION.

1. No spark plug suppressors are required.
 2. Distributor Suppressor : Remove the high tension lead from the centre of the distributor cap, and into its place fit a plug-in type distributor suppressor. Slip the rubber cap supplied in acc. package on to the H.T. lead. Fit lead into outer end of suppressor and slip rubber cap over the connection.
 3. Mount a .5MFD. metal clad by-pass condenser under the nut holding the ignition coil mount strap. The lead from the condenser is to be kept as short as possible, and is connected to the battery terminal of the ignition coil.
 4. Mount a .5 MFD. metal clad by-pass condenser under the head of the screw provided for this purpose on the generator. Connect the lead from the condenser to the armature terminal, not the field terminal. Keep the lead as short as possible.
 5. Bonding: Bond the engine to the firewall by installing a piece of flexible copper braid supplied in acc. package under the rear valve cover nut. The other end of the braid is fastened under the nut used for mounting the by-pass condenser on the ignition coil.
- NOTE: The nuts and mounting positions of the by-pass condensers and bonding braid must be entirely free of paint, varnish, duco and grease to ensure a proper electrical contact.

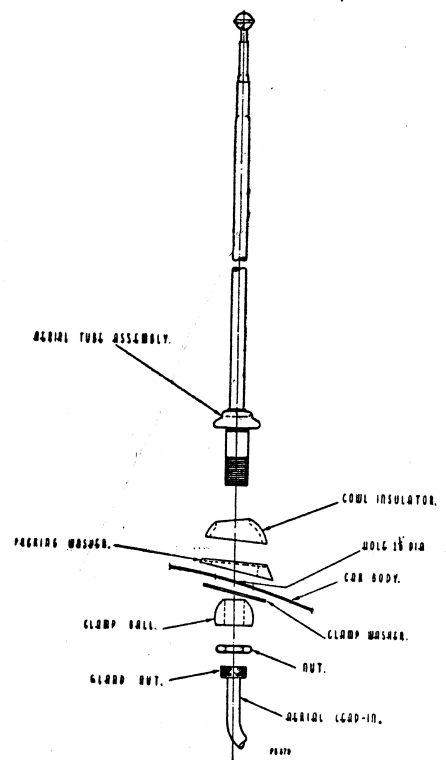
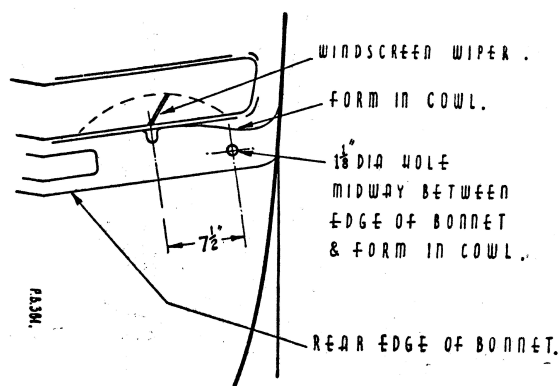


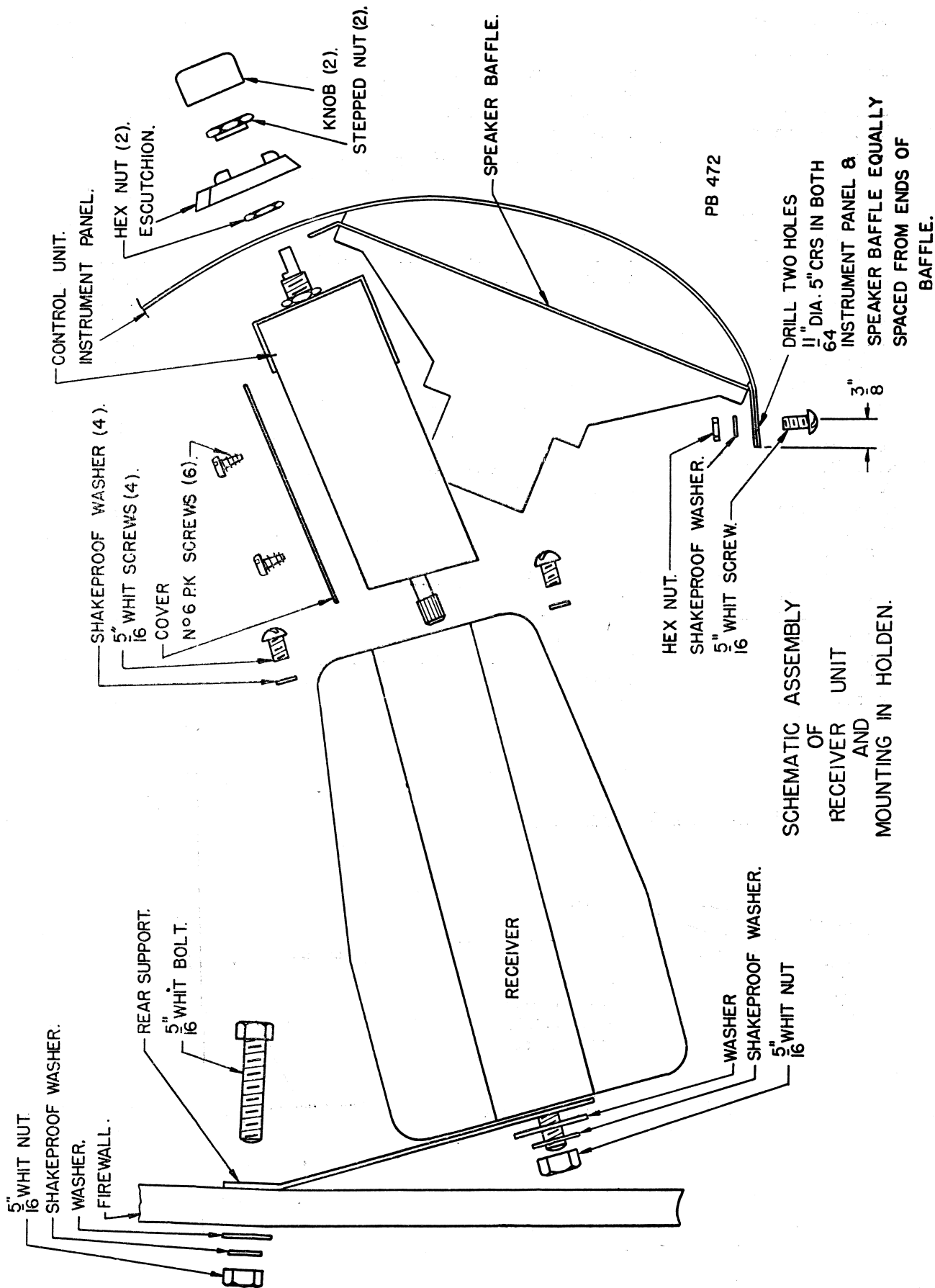
BULLETIN R-16.

File: Installation Receiver

Date: 20/4/50.

Parts List		Part No.
Antenna	: Antenna only, less lead-in, fully extended 49", fully retracted 15"	M173
Antenna Lead-in	: 36" overall length	M171
Volume Control	: .5 megohm	PR661
Speaker	: 6" round type, with two 12" leads, less shielding braid, nyllex covering and plug	K165
Speaker Plug	: 2 pin	336/300
Dist. Suppressor	: Plug-in type, 6 volt	PR221
Suppressor Cap	: Rubber	14/140
By-pass Cond.	: .5MFD. 200V. DCW. Metal clad	PC545
Fuse	: 15 amp.	PM219
Pointer Assy.	:	A102/328
Control Knob	:	4/310
Knob Spring	:	86/71
7 Pin Socket Assy.	: On sub unit	A104/323
7 Pin Plug Assy.	: On receiver lead	104/58-1
Dial Lamp	: 6-8V. 0.3A. min. bay. base G3½ bulb: M127 or 0.15 Amp	PM220
Escutcheon	: Dial	1/684-1
Rear Mount Nut	: On receiver case rear mount screw	3/478-14
Nut Hex.	: Control spindle m'tg.	41/161
Rear Support	:	7/328
Support Bolt	: 5/16" bolt, rear support to firewall	48/560-15
Tone Control	: 100 K. ohms	PR678
Thumb Wheel	: On tone control	3/306
Dial Reading	:	14/665-3
Dial Background	:	7/325
Socket Assy.	: Dial lamp	A103/328
Nut	: Stepped nut for m'tg. escutcheon	23/665-1
Gasket	: Speaker	8/328
Baffle	: Speaker	1/328

ANTENNA MOUNT HOLE.



SCHEMATIC ASSEMBLY
OF
RECEIVER UNIT
AND
MOUNTING IN HOLDEN.