

TR₁
2SA102
CONV.

TR₂
2SA101
1ST IF AMP.

TR₃
2SA101
2ND IF AMP.

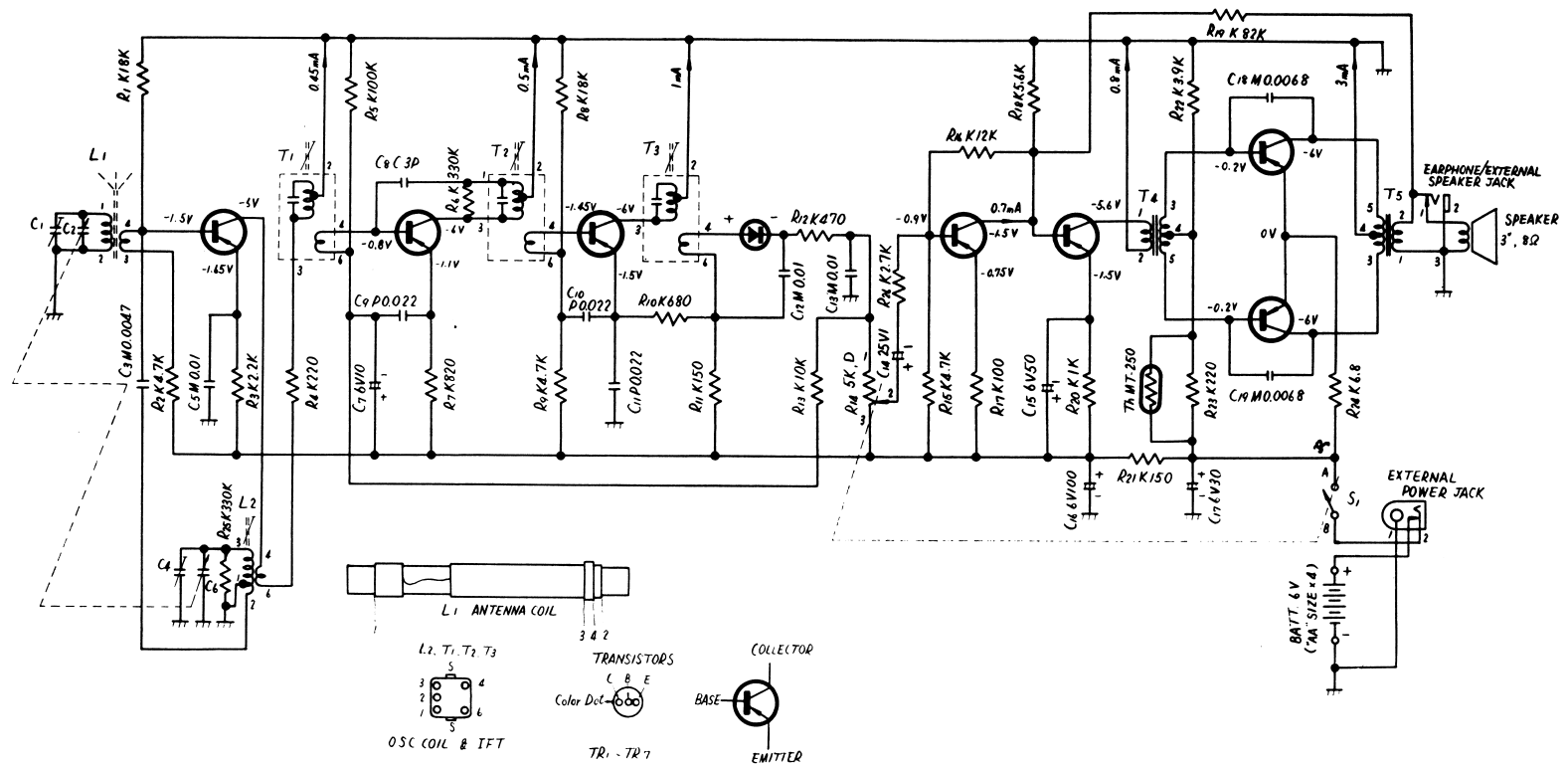
D₁
0A90
DET. & AGC

TR₄
2SB173
1ST AF AMP.

TR₅
2SB175
2ND AF AMP.

TR₆ & TR₇
2SB176×2
POWER AMP.

Fig. 1 Schematic Diagram



Notes:

1. S₁: Power source switch in "OFF" position.
2. DC voltage measurements are taken with circuit tester (10KΩ/V) from positive terminal of battery.
3. Capital letters (K, M, P, C) in the circuit diagram show allowable tolerance of resistors and capacitors as follows:
 K = ±10% M = ±20% P = +100% C = ±0.25PF
 - 0%
4. Battery current: No Signal..... 15mA
 Maximum Output..... 110mA
5. PF=pico farad=mmf
 μF=micro farad=mf
6. All resistor values in ohms (K=1000Ω).
7. All capacitor values in micro farads (P=mmf).

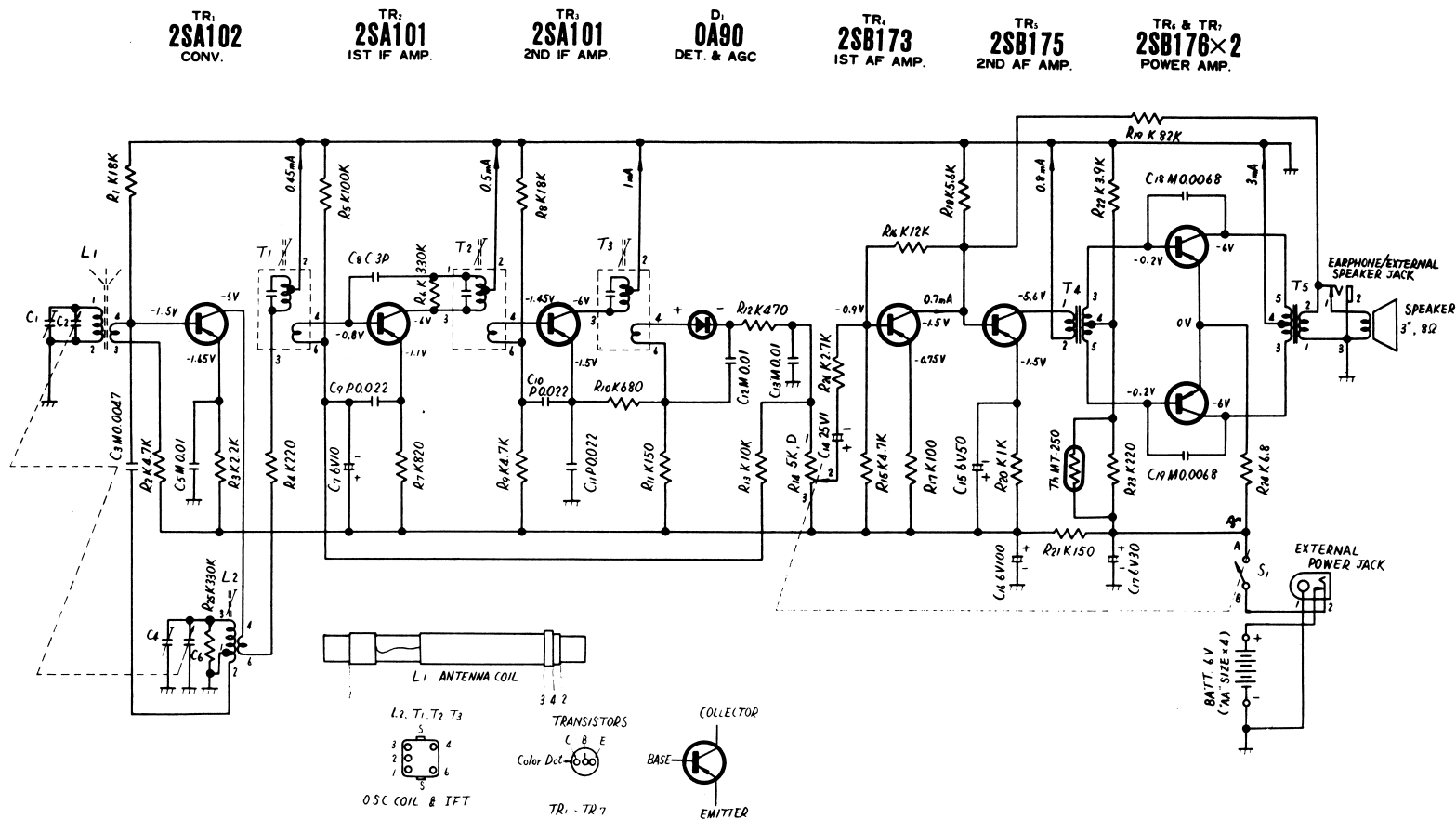


Fig. 1 Schematic Diagram