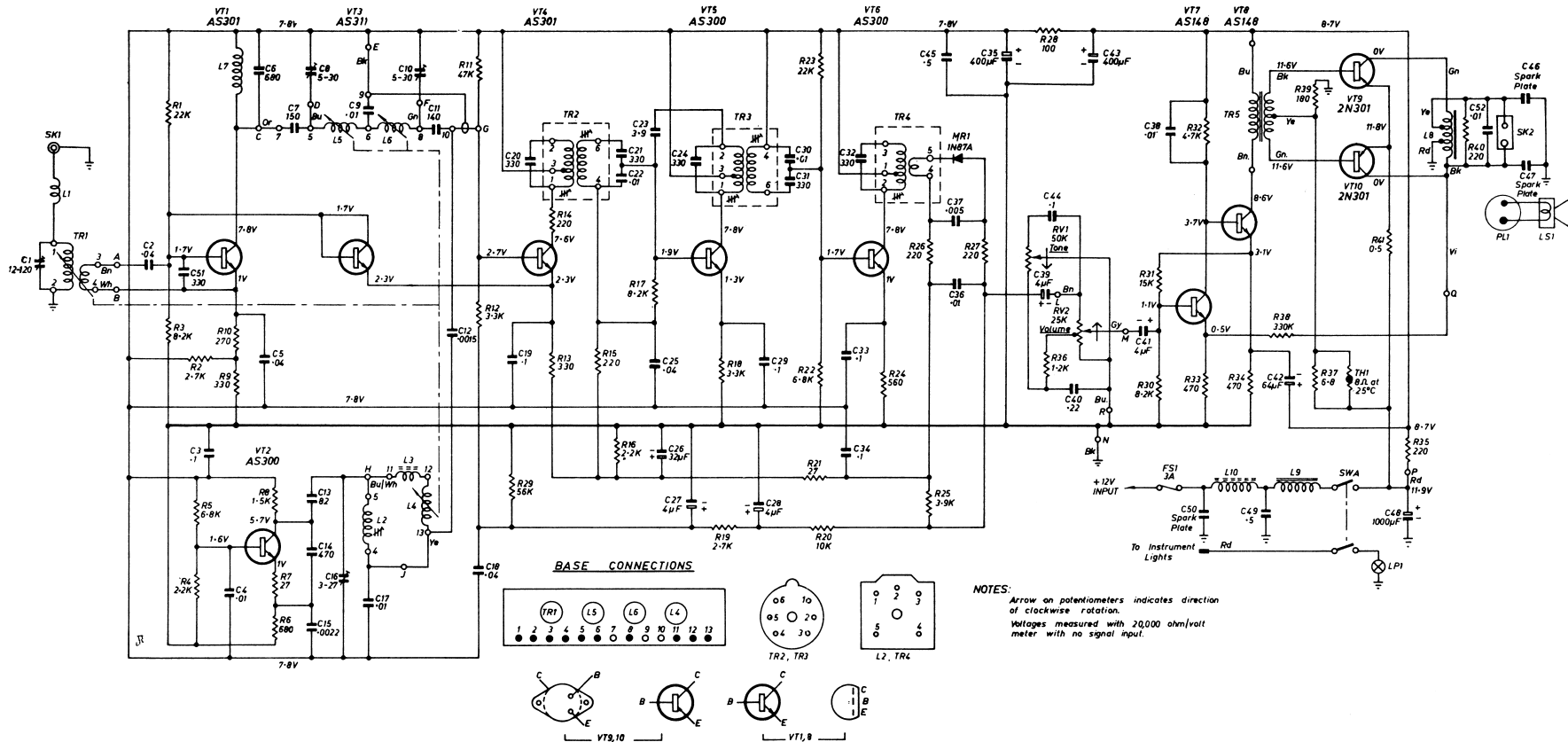
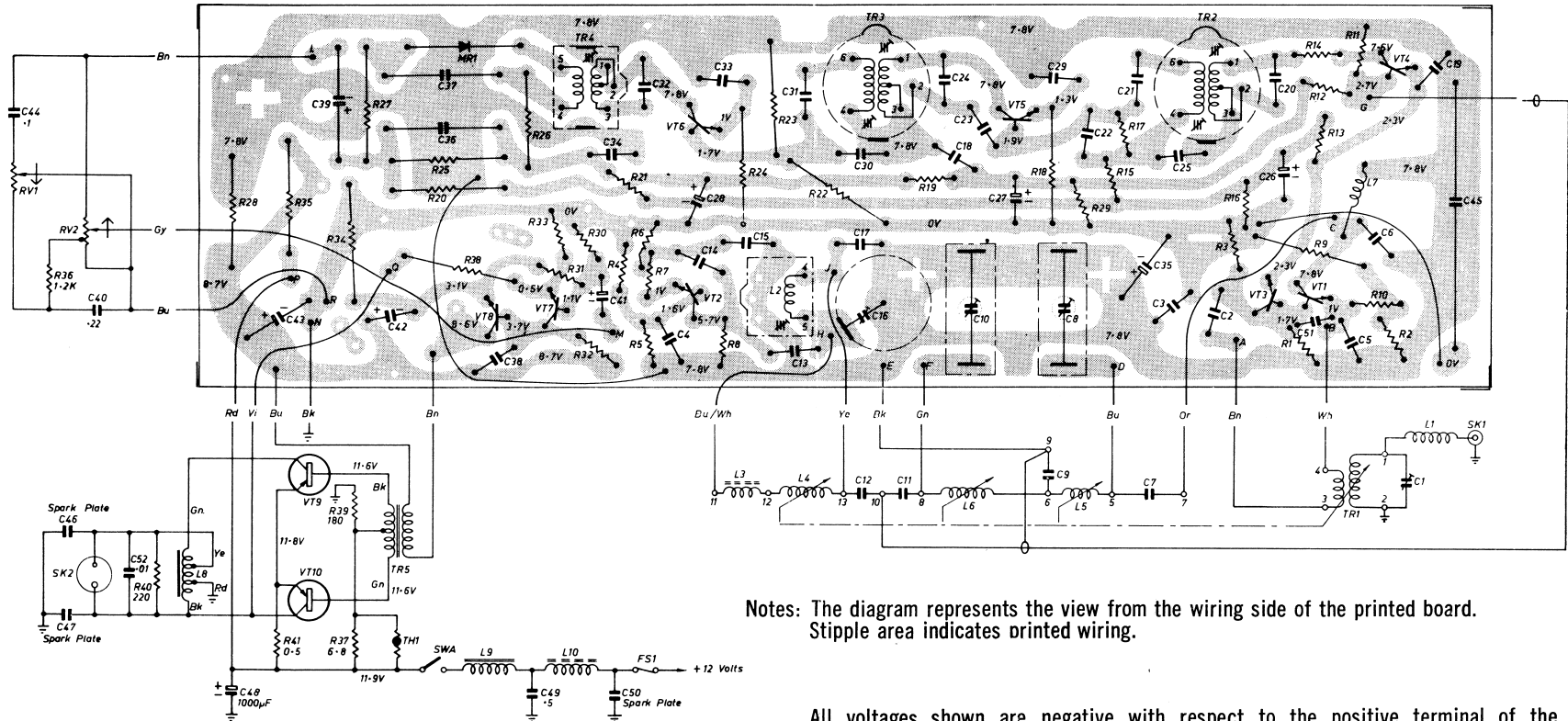


FORD 10 transistor push button car radio XT-18805-D. Equivalent A.W.A. model No. PK32Z.





Notes: The diagram represents the view from the wiring side of the printed board. Stipple area indicates printed wiring.

All voltages shown are negative with respect to the positive terminal of the battery and measured with no signal input and volume maximum clockwise using a 20,000 ohm/volt meter.