

'diamond-dot'

CAR RADIO DIVISION, ELECTRONIC INDUSTRIES LTD.

ASTOR HOUSE: 161-173 STURT STREET, SOUTH MELBOURNE Phone: 69 0300

SERVICE DATA

MORRIS "1100"

INSTALLATION INSTRUCTIONS FOR FITTING

B.M.C. 12 VOLT CAR RADIO

MODELS PD-C - - and MD-C - - "J" SERIES RECEIVERS

MORRIS - 6

File : MORRIS

Date : 5.9.66.

Page : 1

In addition to the selected receiver the installation requires:-

Installation Accessory Package - B.M.C. Part No. HYL 3633

Aerial - 5 Section, telescopic whip, top mount type - B.M.C. Part No. HYL 0426

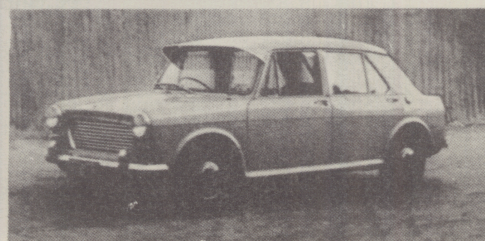
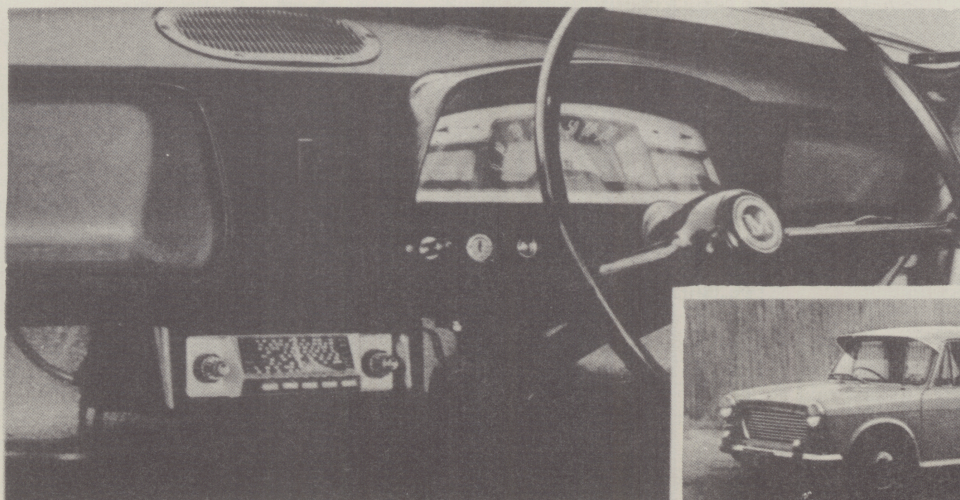
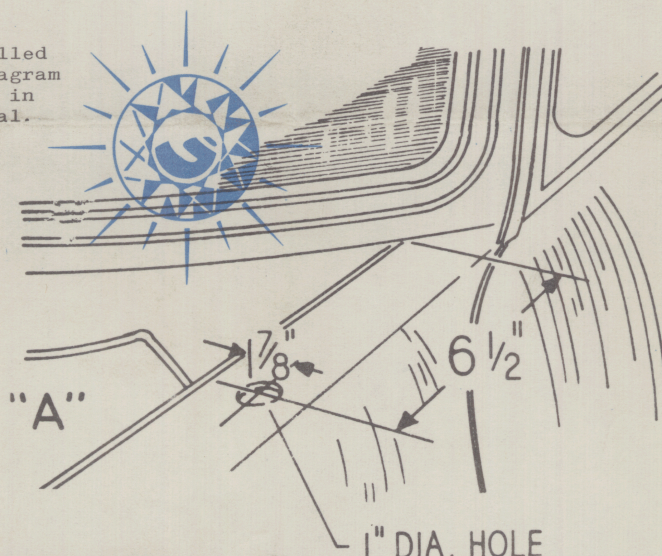
or Aerial - 5 Section, telescopic whip, lock down type - B.M.C. Part No. HYL 2763

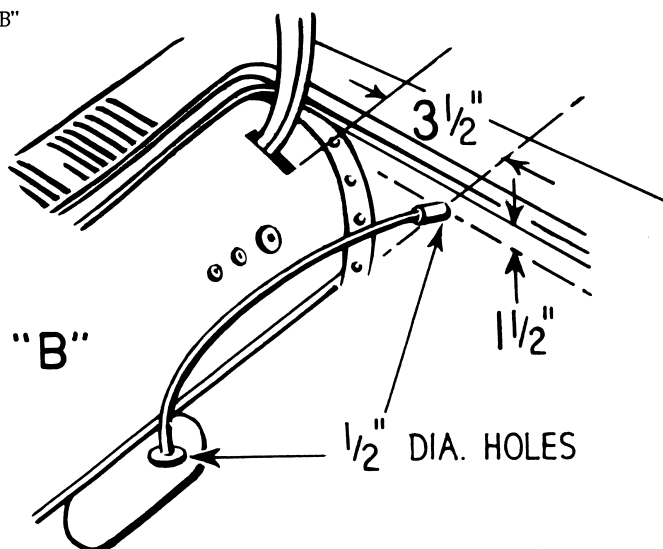
WARNING: BATTERY CONNECTION OF INCORRECT POLARITY WILL DAMAGE THE RECEIVER.

Before commencing installation disconnect leads from car battery. Note the polarity of the battery terminal which is connected to vehicle chassis, then set the receiver polarity changeover switch to corresponding position. i.e. "+" position, positive to chassis, "-" position, negative to chassis.

NOTE: AERIAL TRIMMER is to be adjusted at conclusion of installation.

THE AERIAL as selected is to be installed at the position indicated on diagram "A". Install aerial as detailed in instructions supplied with aerial.





- 1 Drill $\frac{1}{2}$ " dia. holes in engine well wall, also cover plate corresponding to the left hand drive clutch and brake master cylinders.
- 2 Feed lead-in cable through hole then from engine compartment, with a wriggling motion, pull long section of grommet inward until head of grommet locates into and seals $\frac{1}{2}$ " hole.
- 3 Fit grommet supplied into hole in cover plate. Feed cable through grommet then with excess cable inside car push ferrule on cable into grommet.

THE SPEAKER A baffle plate is supplied and is to be fastened in position beneath the grille located on top of panel. The 8"x 4" speaker is then attached to the baffle plate.

- 1 Carefully remove plastic trim surrounding glove box opening. Remove attaching strips and glove box.
- 2 Remove screws and instrument cluster surround then remove screws fastening cluster to panel. Ease cluster forward.
- 3 Place baffle plate beneath grille opening so that tapered edge of baffle is wedged into retaining clip on firewall side of speaker opening. With baffle studs pointing downward press baffle against grille.
- 4 Fasten baffle securely with two shakeproof washers and No. 10 UNF nuts.
- 5 Place speaker beneath baffle so that one edge is under clips attached to baffle. Raise speaker so that studs of baffle protrude through speaker mount holes. Fasten securely with two wing nuts.

THE RECEIVER is to be mounted to lower section of instrument panel. A "U" shaped bracket is supplied to support receiver.

- 1 NOTE: A stay bar ties the parcel shelf rail to instrument panel. This may be located on either side of centre line.
- 2 Place "U" shaped bracket beneath instrument panel with the large rectangular hole nearest rear of parcel shelf. Align two of the four small slots with the two square holes in lower section of instrument panel. Through the other two adjacent slots mark positions then drill two $\frac{5}{32}$ " dia. holes in instrument panel. Attach bracket securely with two flat washers and two $\frac{1}{2}$ "x No. 10 Mushroom hd. screws.
- 3 Drill two $\frac{13}{64}$ " dia. holes in panel corresponding to holes in front of bracket. Insert $\frac{7}{16}$ "xNo.10 NF rd. hd. screws through holes in bracket and panel; fasten securely with flat washers, shakeproof washers and nuts.
- 4 Press the two spacer rings supplied over the control bush lock nuts. Fit dial pointer to carriage arm and fit an "O" ring on to the protruding ledge at each end of dial background.
- 5 Fit dial reading to escutcheon. MANUAL RECEIVER ONLY: Fit filler bar to push button opening of escutcheon then fasten securely with speednuts.
- 6 Place trim panel on to front of receiver then fit dial escutcheon on to panel.
- 7 Fasten securely with chrome washers and barrel nuts then fit the control knobs.
- 8 Slide dust shield forward against trim panel and securely tighten the screws.
- 9 Insert 3 Amp. fuse into fuse holder then connect holder to fuse cover on end of receiver lead.
- 10 Place receiver betweenarms of "U" bracket so that trim panel section locates over the front of "U" bracket. Fasten receiver securely to bracket with flat washers and $\frac{3}{8}$ "x No.8 Phillips hd. screws.

- 11 Insert speaker lead plug into receiver socket adjacent to battery lead entry.
- 12 Insert aerial lead-in cable plug into receiver socket located on passenger side rear corner.
- 13 Route receiver battery lead to rear of panel then connect to vacant terminal marked "3" on rear of ignition switch.
- 14 Refit glove box, instrument panel cluster, and attachments to panel.

INTERFERENCE ELIMINATION: No spark plug suppressors or distributor suppressor is required.

NOTE:1 Mount positions for the by-pass capacitors must be entirely free of paint and varnish to ensure a good electrical contact. Lightly smear cleaned surfaces with lanoline.

NOTE:2 Remove and retain insulating tape from by-pass capacitor.

Generator: .5uF capacitor P/No. 4009-024-19 (large claw type terminal.) Move shroud off armature terminal connector then slide terminal on end of lead from capacitor on to armature connector. Refit shroud. Loosen bolt fastening ignition coil mount bracket nearest front slide mount foot of capacitor under head of bolt. Do not tighten.

Ignition Coil .5uF capacitor P/No. 4009-024-40 (small slide type terminal.) Press rubber shroud so that vacant battery terminal of coil protrudes through shroud. Insert capacitor terminal on to protruding blade. Slide mount foot under generator capacitor then securely tighten bolt.

Tape leads from capacitors together to prevent chafing on metal brackets.

Reconnect leads to car battery.

AERIAL TRIMMER ADJUSTMENT:

Raise aerial to half extended height. NOTE: If a fully retractable aerial is fitted raise the large diameter outer tube until it is against stop in aerial base. Tune receiver to a weak station near 1000 Kc/s (approximately centre of dial) adjust trimmer for maximum volume of signal.

MORRIS "1100"

MODELS PD-C - - and MD-C - - "J" SERIES RECEIVERS

COMPONENT PART LIST

4077-212-53 Aerial Lead-in Cable (1) 60" overall length
7120-029-02 Grommet (1) Lead-in cable

SPEAKER AND MOUNTING ACCESSORIES

4056-015-04 Speaker (1) 8"x 4" permag type c84L36/127/15
7009-086-01 Baffle Assy. (1)
7262-512-01 Washer (2) shakeproof 3/16" ext.
7150-104-11 Nut (2) No. 10 UNF. Hex.
7148-653-01 Nut (2) 5/32" Whit. Wing
7171-015-02 Plug (1) on end of lead
7244-034-01 Terminal (2) on end of lead
1171-023-08 Lead - 24" required

RECEIVER MOUNTING ACCESSORIES

7028-639-03 Bracket (1) "U" shape
7201-330-11 Screw (2) $\frac{1}{2}$ "x No. 10 Mushroom hd.
7261-218-09 Washer (4) Flat Steel, 9/16"x 7/32" Bracket to Vehicle
7262-012-01 Washer (2) shakeproof 3/16" int. Bracket to Vehicle
7200-228-11 Screw (2) 7/16"x No. 10 UNF Phillips Hd. Bracket to vehicle.
7150-104-11 Nut (2) No. 10 UNF Bracket to vehicle
7261-164-03 Washer (4) flat steel black oxidised, 9/16"x 11/64" Bracket to receiver.

7201-579-34 Screw (4) $\frac{3}{8}$ "x No. 8 Phillips Hd. black oxidised
7186-022-01 "O" Ring (1) dial background
7159-035-01 Front Panel (1) black plastic covered
7084-147-31 Escutcheon Assy. (1)
includes:
"Diamond Dot" Emblem
B.M.C. Metcal
Barrel Nuts (2)
Chrome Washer (2)
Spacer Ring (2) 5/16", Control Bush Lock Nut
Knob (2) antiference and tone, rear
Knob (2) tuning and volume, front
Dial Pointer (1)
Fuse (1) 3 Amp.
Fuse Holder Body (1)
Battery Lead - 12" required
Terminal (1) on end of battery lead
Tape - black PVC $\frac{1}{2}$ ", 2" required
Shroud (1) Terminal

INTERFERENCE ELIMINATION ACCESSORIES

4009-024-19 .5uF Capacitor (1) generator by-pass
4009-024-40 .5uF Capacitor (1) ignition coil by-pass

COMPONENTS SUPPLIED WITH RECEIVER

7070-115-11 Dial Reading (1)
7119-046-01 Filler Bar (1) push button opening of escutcheon
7152-272-01 Speednut (2) filler bar fastening
7065-011-01 Fuse Holder Cover (1)
7086-125-04 Contact (1) fuse holder