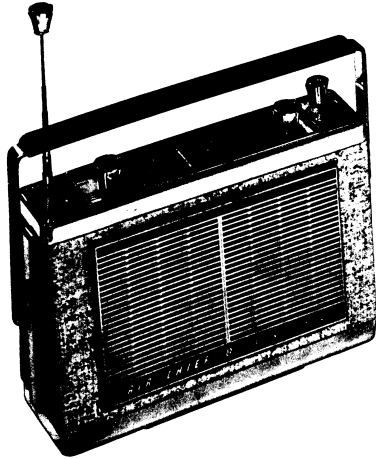


**MODEL MN—C8K****3 TRANSISTOR SUPERHETERODYNE  
9/12 VOLT PORTABLE CAR RADIO****(Battery negative terminal connected to chassis)****Manual Tuning****ESPECIALLY DESIGNED FOR HOLDEN MODEL "HD"  
UNDER THREE CONDITIONS OF OPERATION****PORTABLE - PORTABLE IN CAR - CAR RADIO**

TUNING RANGE:-

525 — 1615 Kilocycles

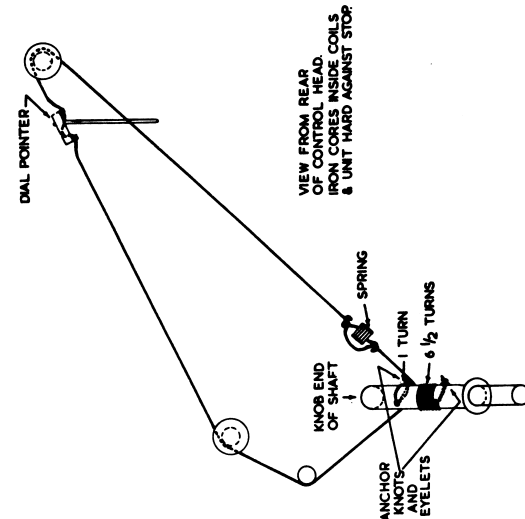
POWER OUTPUT:-

300 milli Watts, Portable  
2 Watts, Car Radio

OUTPUT IMPEDANCE:-

15 Ohms.

CURRENT CONSUMPTION:- No Input

14 mA. Portable  
45 mA. Car Radio (does not  
include dial lamps).**CHASSIS SERIAL NUMBER**

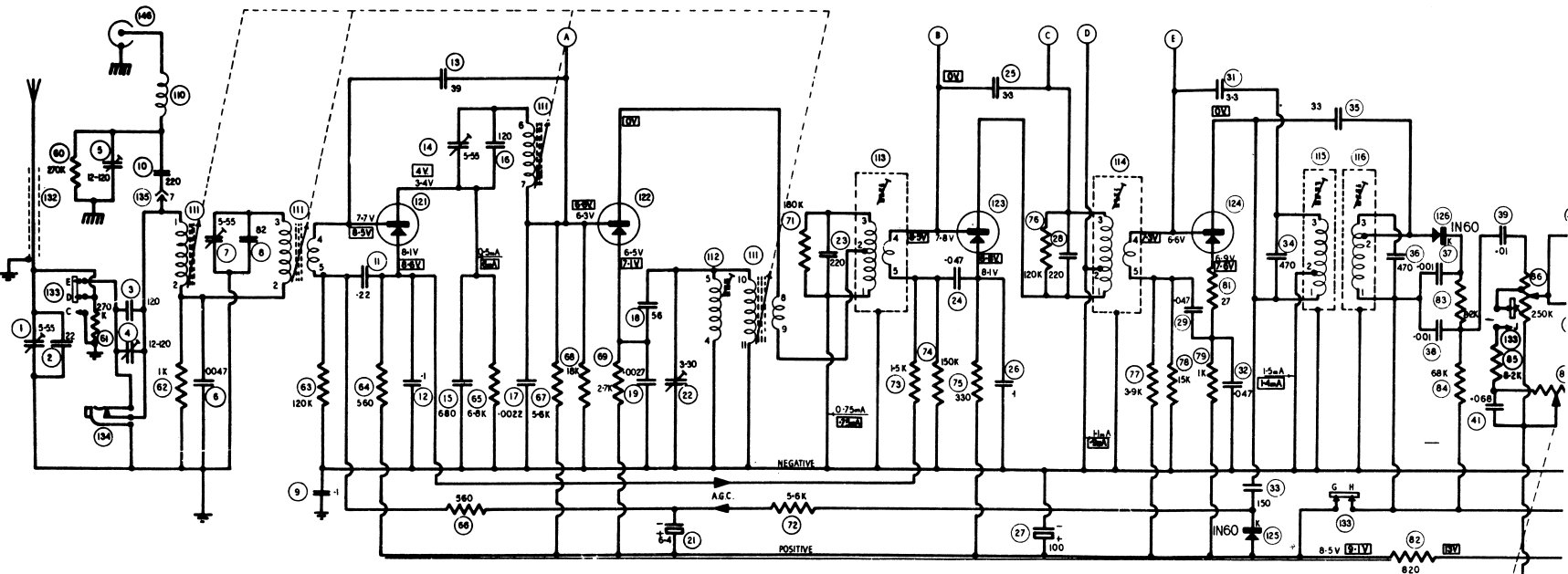
The serial number is stamped into the metal chassis and is visible when the chrome base section of cabinet is removed. Two screws fasten base in position.

AT17

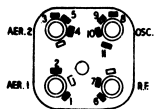
2N412

2N410-E

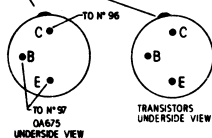
2N410-B



MANUAL PERM. TUNER UNIT  
REAR VIEW

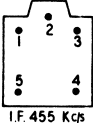


COLOR DOT



TRANSISTORS  
UNDERSIDE VIEW

OSC. SHUNT COIL  
& I.F. TRANSFORMER  
UNDERSIDE VIEW



I.F. 455 Kc/s

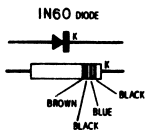
BLACK VOLTAGE READINGS REFER TO PORTABLE CONDITIONS MEASURED BETWEEN POINTS INDICATED AND -VE LINE. RED VOLTAGE READINGS IN BOXES REFER TO NEGATIVE TO CHASSIS, CAR RADIO CONDITIONS MEASURED BETWEEN POINTS INDICATED AND CHASSIS WITH A D.C. VACUUM TUBE VOLTMETER.

NUMBERS ASSIGNED TO TERMINALS OF COILS AND TRANSFORMERS ARE TO FACILITATE CIRCUIT TRACING OR COMPONENT REPLACEMENT AND MAY NOT BE FOUND ON THE UNIT.  
IMPORTANT - REFER TO SERVICE DATA MN-C8K-1 FOR INSTRUCTIONS BEFORE ADJUSTING COLLECTOR CURRENT OF AC12B'S

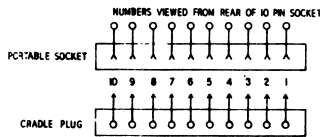
**MODEL MN-C8K**

MANUAL TUNING.  
9 VOLT PORTABLE OPERATION.  
12 VOLT NEGATIVE TO CHASSIS  
CAR RADIO OPERATION.

DRWN	CHK	APPS	DATE
156	44	27	12-3-61



IN60 DIODE

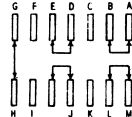


PORTABLE SOCKET

CRADLE PLUG

CONTACT PIN VIEW  
VIEWED FROM OPENING OF CRADLE  
(PLUG AT BOTTOM)

CHANGE-OVER SWITCH (SHOWN IN PORTABLE POS.)



SPRING END  
OF SWITCH

NOTE:

- ↓ DENOTES PORTABLE CHASSIS
- ⏏ DENOTES INSTRUMENT PANEL HOUSING GROUND
- ⏏ DENOTES PLUG & SOCKET CONNECTIONS (NOT ENGAGED)
- (D) DENOTES TEST PINS.

