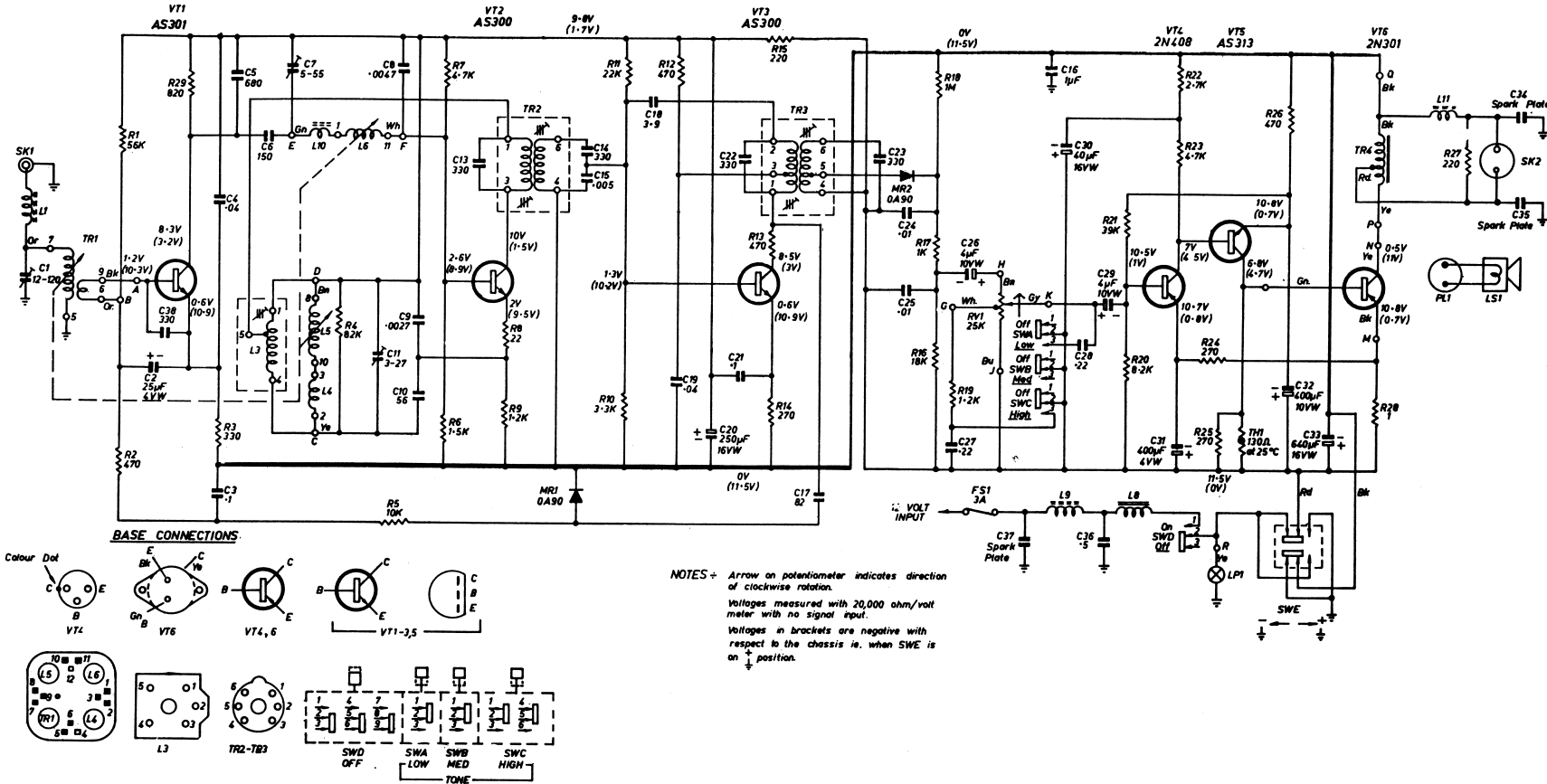
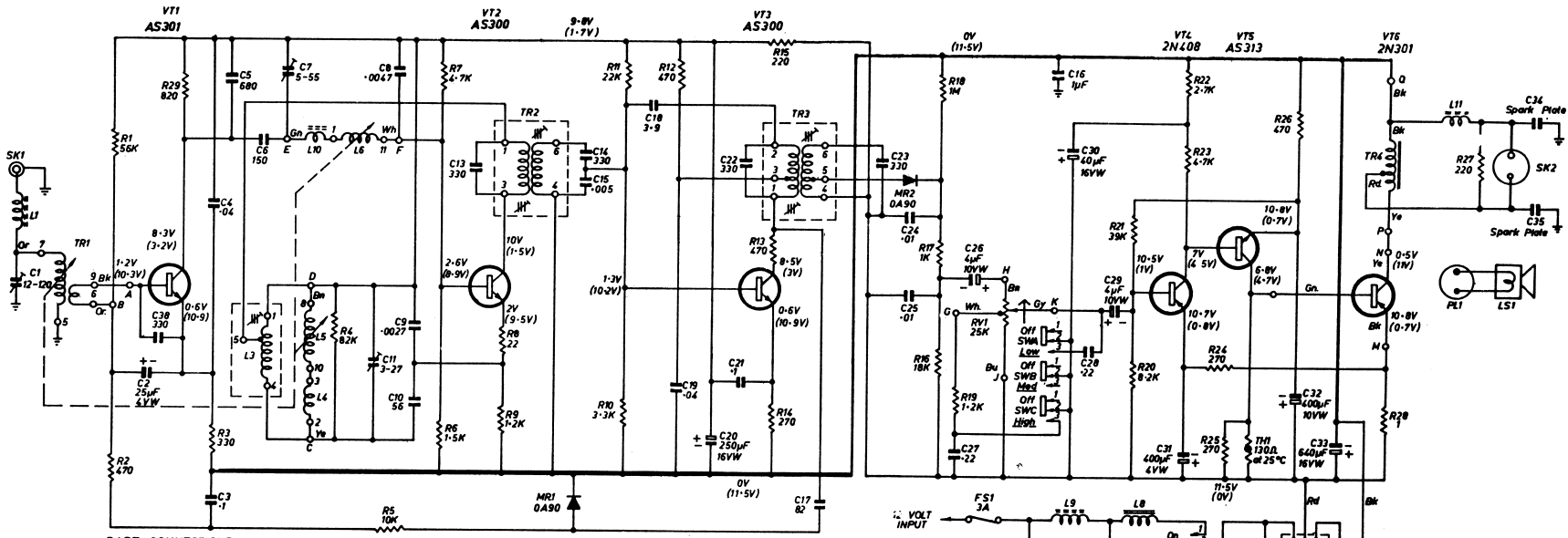


AWA SIX TRANSISTOR CRUISER CAR RADIO MF3V

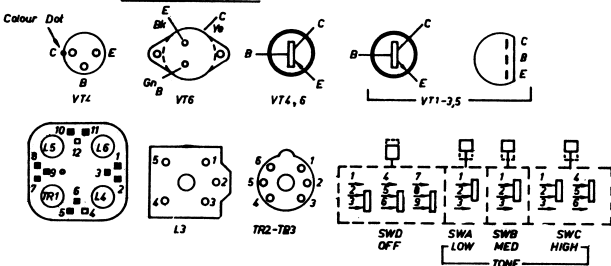


CIRCUIT VARIATIONS:
 To improve performance at elevated temperatures later chassis will have the following changes:
 VT4 from 2N408 to AS158 or BC178
 R20 from 8.2K Ω to 10K Ω
 R21 from 39K Ω to 27K Ω

AWA SIX TRANSISTOR CRUISER CAR RADIO MF3V



BASE CONNECTIONS:

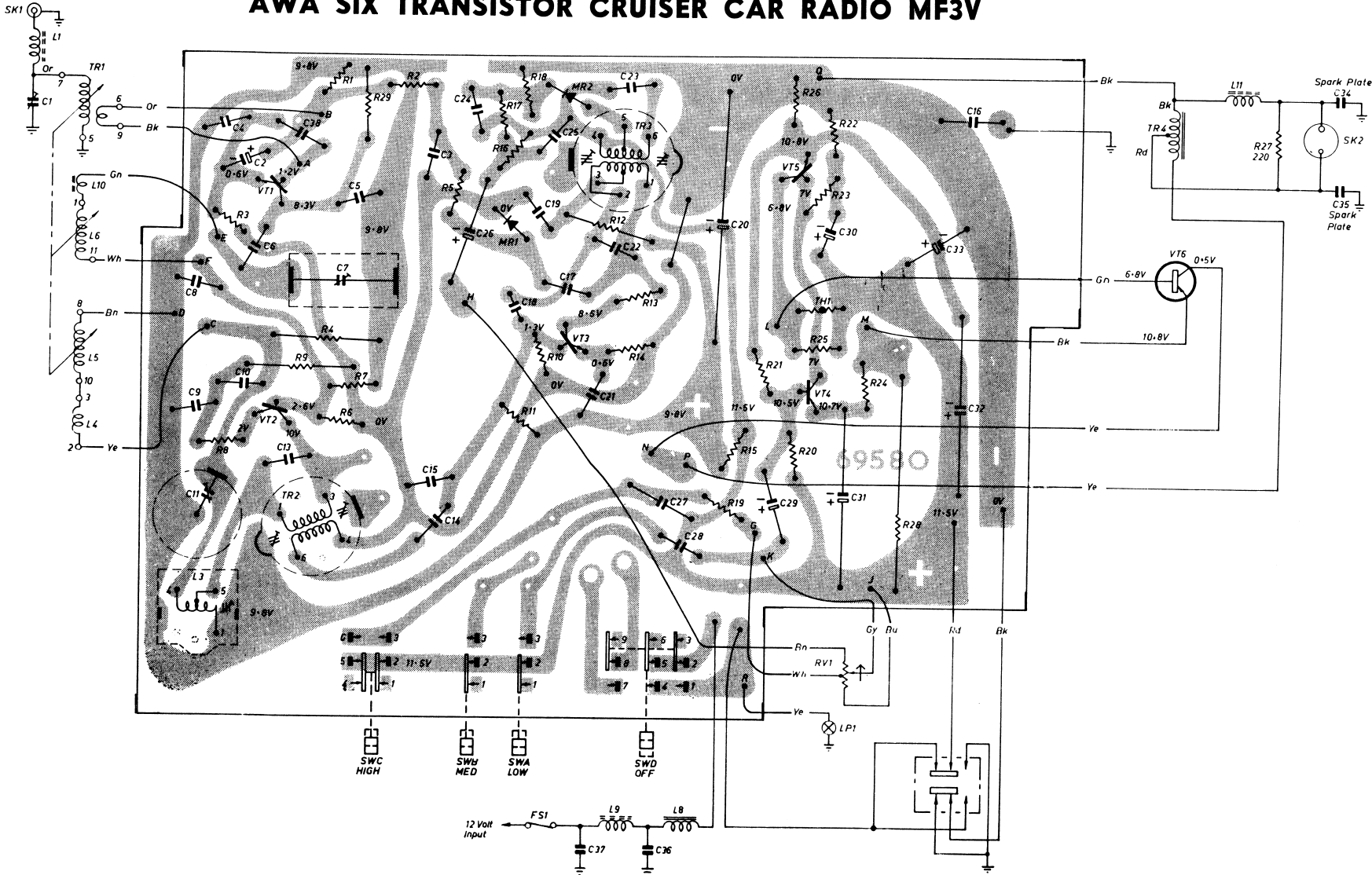


NOTES: - Arrow on potentiometer indicates direction of clockwise rotation.
 Voltages measured with 20,000 ohm/volt meter with no signal input.
 Voltages in brackets are negative with respect to the chassis i.e. when SWE is on + position.

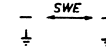
CIRCUIT VARIATIONS:

To improve performance at elevated temperatures later chassis will have the following changes:
 VT4 from 2N408 to AS158 or BC178
 R20 from 8.2KΩ to 10KΩ
 R21 from 39KΩ to 27KΩ

AWA SIX TRANSISTOR CRUISER CAR RADIO MF3V

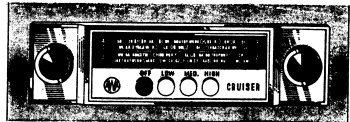


Notes: The diagram represents the view from the wiring side of the printed board.



TECHNICAL INFORMATION AND SERVICE DATA

A.W.A. SIX TRANSISTOR CRUISER CAR RADIO Model MF3V



GENERAL DESCRIPTION

This receiver is a six-transistor manually tuned car radio designed for the reception of the Medium Wave Broadcasting Band.

Operation is from a 12 volt supply with pre-set polarity switch selection for positive or negative earth installation. To prevent accidental operation of the polarity switch it is mounted on the front face of the receiver behind the escutcheon.

Four interlocked push buttons are incorporated to provide on-off facility and three grades of tonal response.

ELECTRICAL AND MECHANICAL SPECIFICATION

Model MF3V is mechanically similar to the original MF3 model.

The main variation concerns the new printed board assembly incorporating silicon planar transistors. All the information concerning this printed board assembly i.e. circuit, printed board layout and parts list, are contained in this manual. The alignment procedure is the same as detailed in the original MF3 Service Manual.

Frequency Range	525-1620 kHz
Intermediate Frequency	455 kHz
Battery Voltage	12 volts
Battery Polarity (Switch Selection)	+ or — Earth
Battery Consumption	0.7 Amps (No Signal)
Power Output	2 watts
Output Impedance	15Ω at 400 Hz

TRANSISTOR AND DIODE COMPLEMENT:

AS301	R.F. Amplifier
AS300	Converter
AS300	I.F. Amplifier
2N408	Audio Pre-amplifier
AS313	Audio Driver
2N301	Output
OA90	Detector
OA90	A.G.C.