

24 OCT 1972

DIAMOND DOT

CAR RADIO DIVISION, RADIO CORPORATION PTY. LTD.,
1090 Centre Road, Clayton, Victoria — Phone 544 2444.

Mercedes-Benz 7

File: Mercedes-Benz

Date: 20-9-72

INSTALLATION INSTRUCTIONS for fitting PN-C27AN CAR RADIO RECEIVER into the MERCEDES-BENZ Compact-Series 220, 230 and 250

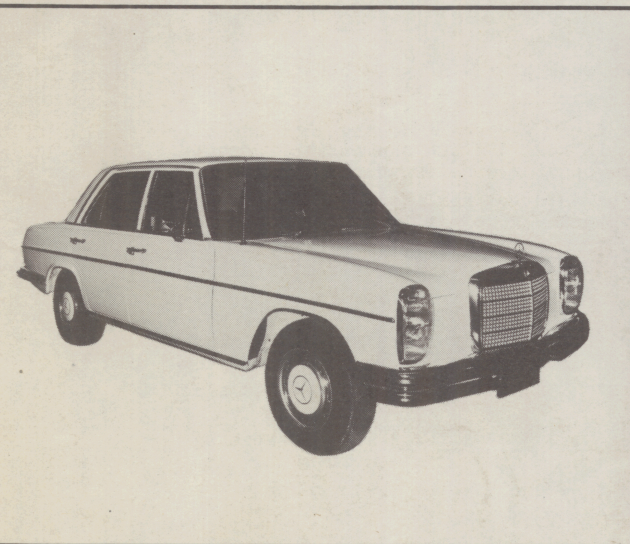
Mercedes-Benz Common Package CW714 — Part No. 7281-114-06

Mercedes-Benz Accessories Package — Part No. 7296-131-01

(Together, these packages contain a 13-transistor pushbutton receiver, motorised antenna, front and rear speakers, fader control and all attaching parts.)

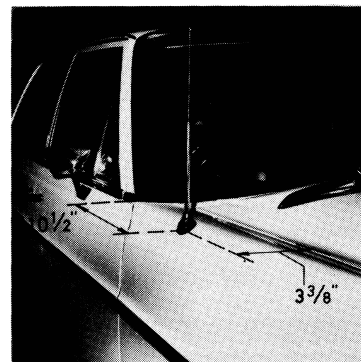
WARNING: Battery lead of these receivers must be connected
only to the **POSITIVE** terminal of a battery.
Connection to incorrect polarity will damage the receiver.

NOTE: The **ANTENNA TRIMMER** must be adjusted at conclusion of installation.



THE MOTORISED ANTENNA is to be mounted within the driver's side mudguard. Care must be taken to ensure that the antenna mounting hole is located accurately in the position described.

- Disconnect one lead from battery.
- Remove splash shield from beneath driver's-side mudguard.
- Drill a 1" dia. hole at the position shown in diagram.
- Mount antenna so that mast is vertical and ensure that the antenna drive motor is towards outside of vehicle.
- Bend the antenna mounting brace to form a Z-shaped bridge between the antenna mounting lugs and the car wall which separates the mudguard from the car interior. Mark through the bracket and drill a 13/64" dia. hole in the car wall at the position marked. Remove burrs.
- Secure antenna mounting brace to car wall using 3/4" x 3/16" pan head screw, flat washer, spring washer and 3/16" hex. nut. Fasten brace to the antenna motor casing using 15 mm x 5 mm hex. head screws, flat washers, spring washers and 5 mm hex. nuts. Tighten all nuts securely.
- Remove plastic trim from driver's-side kick panel and drill a 1/2" dia. hole in the metal panel visible at forward side of round orifice in kick panel. Remove burrs.
- Fit 1/2" rubber grommet to hole; pass motor power leads and antenna lead-in cable through grommet to car interior.
- Pull down plastic trim from beneath instrument panel at right hand side of steering column. Feed leads through to position just behind central console.
- Replace splash shield.

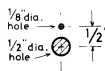


THE FADER CONTROL AND ANTENNA DRIVER SWITCH are to be mounted on the central console (see photograph on front page).

- Remove the front carpets and slide the front seats to the extreme forward position.
- Remove the arm rest.
- Remove and retain the four screws which fasten the console to floor of car; remove the two plastic nuts securing the top of console.
- Slide seats fully back.
- Slide console back; note electrical connections then disconnect the plugs and sockets. Console may now be removed from vehicle.
- On the same horizontal centre line as the existing console-mounted controls, mark the intended mounting positions for the antenna drive switch and the fader control (see photograph on front page). Before cutting console, ensure that selected mount positions will result in the four console-mounted controls being in line and equally spaced.
- Carefully cut mounting holes as shown in diagram.



ANTENNA DRIVE SWITCH
MOUNTING HOLE



FADER CONTROL
MOUNTING HOLE

Fit the antenna drive switch and the fader control to the console. The antenna drive switch is secured by means of a spring clip which is fitted from behind the console. Ensure that the lugs engage with the slots at the sides of the switch.

THE RECEIVER is to be mounted in the aperture provided in the central console; this should be done before the console is replaced in car.

- Remove the ashtray from its holding frame.
- Remove the two securing screws and withdraw the ashtray holding frame.
- Drill a 3/16" dia. hole in the centre of the metal brace at the rear of the ashtray housing.
- Remove the cover panel from radio aperture and place in glove box.
- Place the receiver escutcheon into the radio aperture to check fit. The skirt of the escutcheon is to fit snugly into the aperture, and the escutcheon face plate is to sit flush against the console. If necessary, carefully file the edges of the radio aperture to provide a satisfactory fit.
- Loosely attach side mount brackets to sides of receiver with four slotted hex. head, washer-attached screws. The right-angled lip of each bracket is to be nearest to the receiver thumbwheels and turned outwards.
- From behind panel, position receiver into escutcheon. Push both escutcheon and receiver firmly against console and tighten washer-attached screws.
- Hold rear mount bracket in required mount position and insert a 3/4" x 3/16" Whit. round head screw through ashtray housing and rear mount bracket. Fasten securely with flat washer, shakeproof washer and 3/16" Whit. nut.
- Securely fasten rear mount bracket to rear of receiver with 3/8" x 3/16" Whit. hex. screw and flat washer.
- Fasten one end of bond braid to thread form in side of receiver with 3/8" x No. 6 washer-attached screw.
- Place console near its mount position in car. Securely fasten free end of bond braid under a convenient screw or nut which is connected to the vehicle chassis.
- Connect antenna lead-in cable to antenna socket on receiver.
- Connect the twin lead from the antenna drive motor to the twin lead attached to antenna drive switch.
- Connect plug on fader control lead to receiver output socket.
- Reconnect the plugs and sockets previously disconnected from console.

THE FRONT SPEAKER (7" x 3") is to be mounted beneath the grille provided on top of the instrument panel.

- Remove the grille (which is held in position on top of the instrument panel by four clips).
- Place the 7" x 3" speaker into the aperture (magnet first) and mark two holes diagonally opposite each other.
- Remove the speaker and drill two 1/8" dia. holes in the panel at the positions marked.
- Place speaker in its mount position and attach front speaker lead (from fader control); secure speaker with two 3/8" x No. 8 Phillips pan head screws.
- Refit speaker grille.

THE REAR SPEAKER (8" x 4") is to be mounted under the tear-out aperture at the centre of the rear parcel shelf.

- Remove base of rear seat.
- Push rear arm rest down.
- Pull aside the cover material behind the arm-rest stowage position and drill a 5/16" dia hole in the metal panel. Remove burrs.
- Route the rear speaker lead (from the fader control) under the carpet to the rear seat.
- Fit the rubber grommet to the lead.
- Pass the lead behind the arm-rest stowage position and feed through the hole drilled previously. Fit the grommet to hole.
- Remove the semi-pierced metal section from the centre of the panel at top of boot.
- Remove the 5/32" Pal nuts from the rear speaker and lay the escutcheon, foam gasket and grille safely aside.
- Hold the speaker evenly over the aperture and mark through the fixing holes; lay speaker safely aside.
- Drill 3/16" dia. holes in positions marked and extend holes vertically through carpet of rear parcel shelf.
- Using the aperture as a template, cut away the parcel shelf carpet material directly above the aperture. Be careful not to cut away carpeting beyond the periphery of the aperture.
- Fit the gasket then the grille (painted side first) over the studs of the speaker escutcheon; fit this assembly to the parcel shelf.
- Fit speaker over escutcheon studs and secure with 5/32" Pal nuts.
- Attach leads to speaker terminals. (Any spare lead to be stowed under rear seat base).
- Replace the base of the rear seat, ensuring that the speaker lead cannot be damaged by the seat.

THE POWER SUPPLY for the receiver and the motorised antenna is obtained by connecting a short lead (supplied in kit) to Fuse 1 in the engine compartment. A twin female connector is then used to provide separate connections to the antenna drive switch and to the receiver battery lead. The receiver battery lead is connected to the receiver power fly-lead through a 3-amp in-line fuse.

- The kit contains a short lead which has a washer-type lug at one end and a male bullet-type plug at the other. Remove the two screws securing the fuse block and connect the washer-type lug of the short lead to the terminal of Fuse 1. Replace the fuse block and securing screws.
- Push the bullet-type plug well into the twin female connector (supplied).
- A receiver battery lead and an antenna battery lead are provided in the kit. Pull down the trim from underneath the glove box and feed one (bullet-type plug) end of each lead through the large grommet in firewall to the engine compartment. Push the plugs well into the twin female connector. Bind both ends of twin female connector with insulating tape.
- Fit the single female connector (from antenna kit) to bullet-type plug on short lead attached to antenna drive switch. Fit bullet-type plug on antenna battery lead to other end of single female connector. Ensure both bullet-type plugs are pushed well in.
- Route receiver battery lead to rear of receiver.
- Insert 3-amp fuse into fuse holder in receiver battery lead then connect to fuse cover on receiver power fly-lead.

SUPPRESSOR CAPACITORS are provided for eliminating interference from the alternator and the ignition coil. Some late model cars are already fitted with suppressors and should not be further suppressed.

Alternator: Connect lug on flexible lead to output terminal of alternator. Fasten mount foot of capacitor securely under head of alternator frame screw.

Ignition Coil: Connect lug on flexible lead to battery terminal of coil. Fasten mount foot of capacitor securely under the coil mount bracket securing screw.

THE ANTENNA TRIMMER located at the rear left hand corner of the receiver MUST BE ADJUSTED to match the receiver tuning circuit to the antenna. Receiver performance will be impaired if this is not done.

- Reconnect the main battery lead.
- Drive the antenna to the half-extended position.
- Switch the receiver ON and tune to a weak signal near the centre of the dial.
- Adjust the antenna trimmer for maximum output from the receiver.
- Carry out a full performance test of the receiver, motorised antenna and the fader control.
- Secure central console using original screws and plastic nuts.
- Replace all trim panels and carpets.

C O M P O N E N T P A R T S L I S TMERCEDES BENZ COMMON PACKAGE CW714 - PART NO. 7281-114-06

4074-144-06 Motorised antenna kit (1) containing:
 4074-144-01 Motorised antenna (1) which includes
 7229-054-01 Mounting brace (1)
 7309-025-01 Screw (2) 15 mm x 5 mm hex. head
 7261-219-01 Washer (2) flat
 7266-013-51 Washer (2) spring
 7310-059-01 Nut (2) 5 mm hex.
 7198-579-11 Screw (1) 3/4" x 3/16" pan head
 7261-218-04 Washer (1) flat
 7266-012-22 Washer (1) spring
 7148-104-11 Nut (1) 3/16" hex.
 7138-172-01 Connector (2) male, spade type
 7218-017-01 Shroud (1)
 1169-051-04 Lead (48" long) } (antenna battery lead)
 7171-056-02 Plug (2) bullet type }
 4059-256-01 Antenna drive switch (1)
 7225-327-01 Switch retaining clip (1)
 7171-056-02 Plug (1) bullet type - attached to switch lead
 7220-094-01 Connector (1) single female type
 3102 308 55041 Fader control and lead assembly (1) which includes:
 4028-002-04 Fader control (1) 100 Ω
 7018-022-02 Bezel (1)
 7124-435-03 Knob (1)
 7150-854-06 Barrel nut (1)
 7261-484-02 Chrome washer (1)
 4077-174-22 Speaker lead assembly (30" long) fader to receiver - includes:
 7171-015-01 Plug (1) receiver output
 4078-087-07 Speaker lead assembly (30" long) fader to front speaker
 4078-087-05 Speaker lead assembly (14 ft long) fader to rear speaker
 7171-056-02 Plug (1) bullet type - soldered to wire in cable loom
 2402 016 05001 Twin female connector (1) power connection
 4077-175-21 Receiver battery lead (1) which consists of:
 7113-001-01 Fuse holder (1)
 7086-125-04 Contact eyelet (1) in fuse holder
 7225-012-02 Spring (1) in fuse holder
 1169-051-08 Wire (42" long)
 7171-029-04 Plug (1) bullet type
 4100-101-01 Receiver Model PN-C27AN (1) 13-transistor, pushbutton-tuned - which includes:
 7065-011-01 Fuse cover (1) receiver power lead
 7086-125-04 Contact eyelet (1) fuse cover
 7152-455-03 Speednut (1) rear mount
 4078-123-02 Antenna fly-lead (1)
 7173-056-03 Pointer (1)
 7005-086-21 Dial background (1)
 7070-133-11 Dial (1) all-State
 7070-133-17 Dial (1) N.S.W.
 7070-133-18 Dial (1) Vic./Tas.
 7070-133-19 Dial (1) Qld/N.T.
 7070-133-20 Dial (1) S.A./W.A.
 7091-027-03 Light filter (1)
 7201-526-16 Screw (2) 5/8" x No. 4 Phillips csk hd - dial and light filter mount
 4071-010-01 Fuse (1) 3-amp
 7106-009-01 Rubber grommet (1) rear speaker lead protection
 4056-015-04 Rear speaker (1) 8" x 4"
 7084-226-07 Escutcheon (1) for rear speaker
 7104-059-05 Speaker grille (1) for rear speaker
 7186-097-02 Foam gasket (1) for rear speaker
 7310-015-01 Nut (4) 5/32" Whit. - rear speaker to car

MERCEDES BENZ COMPACT SERIES 220, 230 AND 250 PACKAGEPART NO. 7296-131-01

7106-033-01 Grommet (1) 1/2" - antenna cables through kick panel
 3102 301 22061 Side mount bracket (right) (1)
 3102 301 22071 Side mount bracket (left) (1)
 7201-721-11 Washer-attached screw (4) 3/8" x No. 6 - side bracket mount
 3102 301 22081 Rear mount bracket (1)
 7198-178-23 Screw (1) 3/4" x 3/16" Whit. rd head - rear mount bracket to ashtray housing
 7261-218-04 Washer (1) 3/16" flat steel - rear mount bracket to ashtray housing
 7262-512-01 Washer (1) 3/16" external shakeproof - rear mount bracket to ashtray housing
 7148-304-11 Nut (1) 3/16" hex. - rear mount bracket to ashtray housing
 7198-033-11 Screw (1) 3/8" x 3/16" Whit. hex. head - rear mount bracket to receiver
 7261-218-04 Washer (1) 3/16" flat steel - rear mount bracket to receiver
 7029-004-02 Earth bond braid (1)
 7201-721-11 Washer-attached screw (1) 3/8" x No. 6 - bond braid to receiver
 4056-019-02 Front speaker (1) 7" x 3", 15 Ω
 7201-579-28 Screw (2) 3/8" x No. 8 Phillips pan head - front speaker mount
 3102 308 55051 Lead assembly (1) connection to fuse block
 4009-045-01 Suppressor capacitor (2) 0.5 μF - alternator and ignition coil