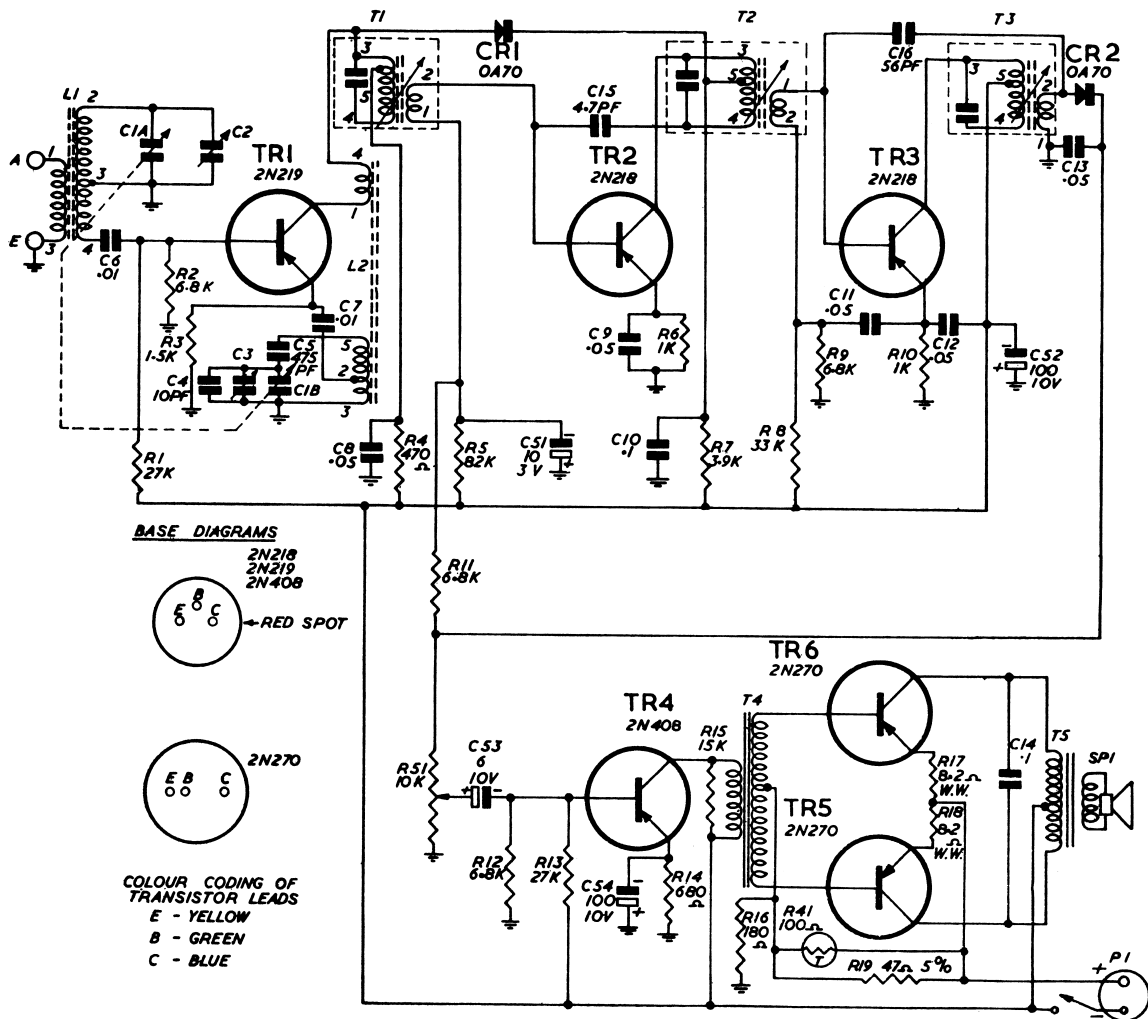


HEALING



COMPONENTS LIST

CIRCUIT NO.	DESCRIPTION
L1	Aerial Coil, Type RJ 137.
L2	Oscillator Coil, Type RJ 136.
R41	Thermal Resistor (N.T.C.), 130 Ohm.
S1	S.P. Wafer Switch, Type RL 821.
SP1	Speaker, Type 5F.
T1, T2	I.F. Transformer, Type RJ 132.
T3	I.F. Transformer, Type RJ 133.
T4	Driver Transformer, Type DR7.
T5	Output Transformer, Type TR4.