

KRIESLER**CAR RADIOS****ADVISORY SERVICE**

KRIESLER AUSTRALASIA PTY. LIMITED.

12-30 CAWARRA ROAD, CARINGBAH.

P.O. BOX 107, CARINGBAH.

TELEPHONE: 5-2044

Pamphlet No. 69-4841. Issue 2.

INSTALLATION INSTRUCTIONS

for

KRIESLER AUTOMATIC CAR RADIO MODEL 41-30

& MANUAL CAR RADIO MODEL 41-35

using

UNIVERSAL INSTALLATION KIT No. 90-4847. ISSUE 2.

WARNING

These receivers are designed for 12 volts operation only.

Before installing, check which terminal of the car battery is connected to chassis, and insert the Polarity Plug in the receiver accordingly.

For cars which have the negative (-) side of the battery connected to chassis, insert the Polarity Plug with the - sign of the Plug pointing to the earth symbol.

For cars which have the positive (+) side of the battery connected to chassis, insert the Polarity Plug with the + sign pointing to the earth symbol. CONNECTION OF WRONG POLARITY MAY DAMAGE THE RECEIVER.

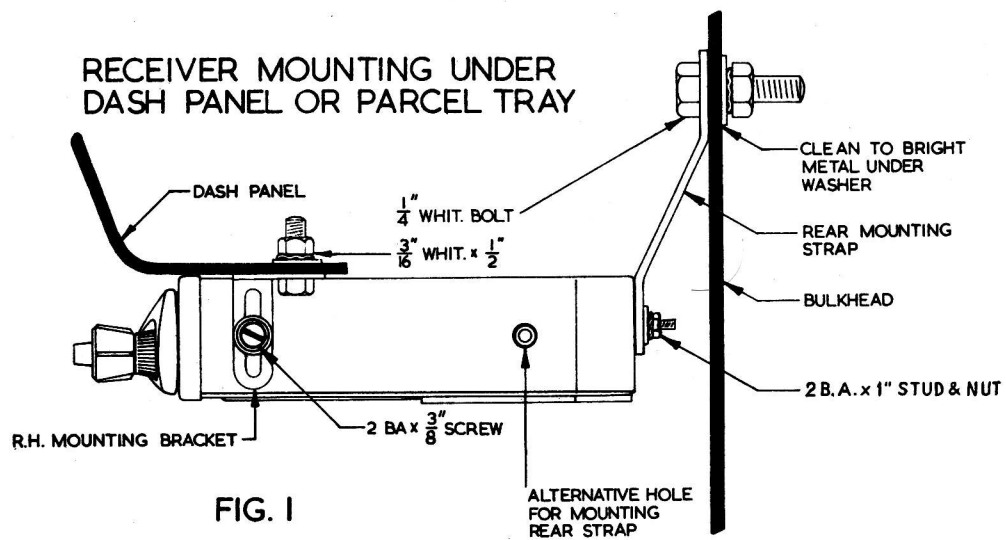
INSTALLATION

1. Mark the position of the aerial mounting hole on the car.
2. Drill a pilot hole where marked and enlarge to required size.
3. Connect the aerial cable to the aerial and mount in accordance with the instructions enclosed with the aerial.

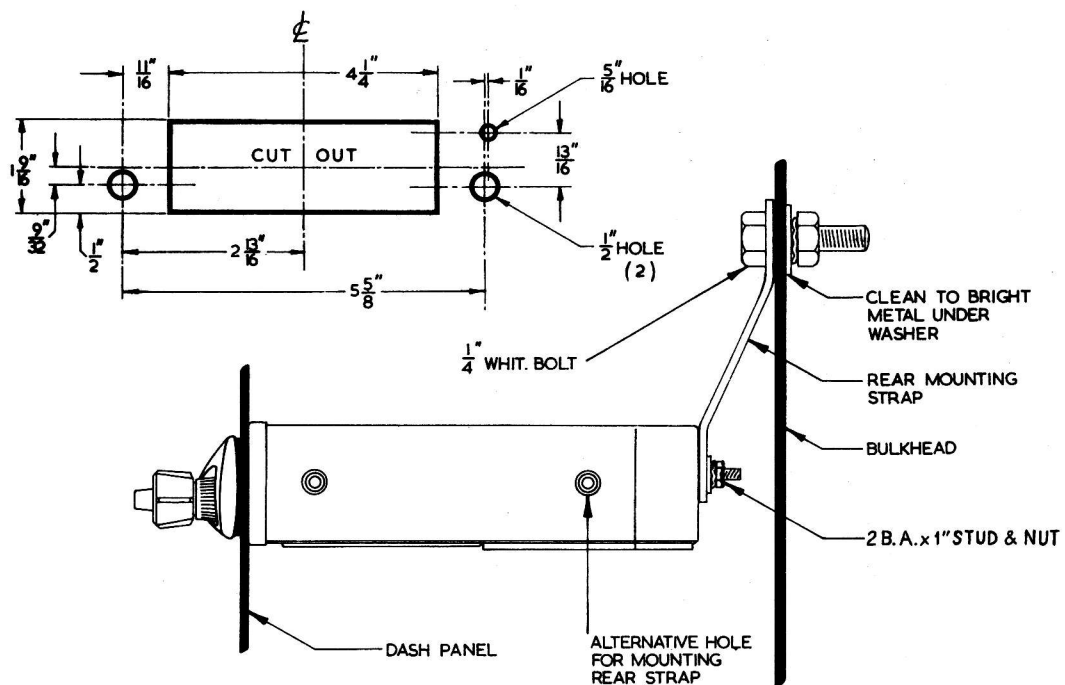
RECEIVER MOUNTING.

The receiver may be mounted either directly under the dash panel, or in the dash panel.

Fig. 1 shows the method of mounting under the dash panel or panel tray.



CUT-OUT REQUIRED FOR DASH PANEL MOUNTING



RECEIVER MOUNTING CONTD.

Procedure is as follows:

1. Fit a Left Hand and a Right Hand Bracket to left and right front sides of the receiver respectively, using 2BA x $\frac{3}{8}$ " screws with associated locking washers and flat washers.
2. With flange of Brackets uppermost, hold receiver in desired mounting position under edge of the dash and mark position of the required mounting hole at each side; drill to take 3/16" screw and mount receiver to dash with 3/16" whit. x $\frac{1}{2}$ " screws, flat washers, locking washers and nuts.
3. Attach the Mounting Strap to the rear of the receiver by means of a 2BA x 1" stud, nut and associated flat washer and locking washer.
4. Form the Mounting Strap to reach the bulkhead and locate a suitable position to attach the strap as a rear support for the receiver; drill a $\frac{1}{4}$ " clearance hole at this position and clean to bright metal an area around the hole to provide good electrical contact.
5. Secure the Strap to the bulkhead with a $\frac{1}{4}$ " whit. x $1\frac{3}{4}$ " screw, flat washer, locking washer and nut.

ALTERNATIVE RECEIVER MOUNTING

Fig. 2 shows the method of mounting receiver in the dash panel.

Proceed as follows:

1. Drill holes and cut out dial opening as shown in the diagram.
2. Pull off the receiver control knobs, being careful not to lose the coiled spring between the two knobs on the Vol./Tone controls. Unscrew the knurled collar nuts behind the knobs and remove the escutcheon.
3. Insert receiver in the dash and, after replacing escutcheon with rubber gasket, secure with knurled collar nuts.
4. Attach the Mounting Strap to the rear of the receiver by means of a 2BA x 1" stud, nut and associated flat washer and locking washer.
5. Form the Mounting Strap to reach the bulkhead and locate a suitable position to attach the Strap as a rear support for the receiver; drill a $\frac{1}{4}$ " clearance hole at this position and clean to bright metal an area around the hole to provide good electrical contact.
6. Secure the Strap to the bulkhead with a $\frac{1}{4}$ " whit. x $1\frac{3}{4}$ " screw, flat washer, locking washer and nut.
7. Replace control knobs, not forgetting the coiled spring.

SPEAKER MOUNTING

The hardware supplied with this kit for speaker mounting, is intended to be used with a metal speaker Box (Part No.90-4852) housing a 7" x 5" speaker.

This speaker unit may be attached to the bulkhead or located in the parcel tray.

Mounting procedure is as follows:

1. Mount the speaker in the Speaker Box with four $5/32$ " whit. x $\frac{1}{2}$ " screws, lock washers and nuts.
2. Fit a $\frac{1}{4}$ " whit. x $1\frac{3}{4}$ " screw to the centre hole in the box mounting bracket and bend the adjacent lug over to captivate the screw head.
3. Mount the bracket to the Speaker Box with two No. 4 x $\frac{1}{4}$ " self-tapping screws. Note that two mounting positions of this bracket are provided; choose the one best suited to the particular speaker mounting position.
4. Drill a $\frac{1}{4}$ " clearance hole in the required mounting position in the bulkhead.
5. Mount the Speaker Box with a $\frac{1}{4}$ " whit. nut, locking washer and flat washer.
6. Join the two halves of the speaker cord connector together.

GENERAL

1. Plug in aerial cable.
2. Connect the Supply Lead Assembly to a suitable 12 volts power supply terminal, such as an accessory position on the ignition switch. Two types of terminal have been supplied for terminating the Supply Lead Assembly; use the one which matches the supply terminal. In the case of the Spade Terminal, feed the lead through the Spade Insulator before soldering the lead, then slide the insulator over the terminal.
3. Insert 2 Amp. fuse in holder of Supply Lead Assembly and connect to power lead from receiver.
4. Dress leads under existing cable tabs under the dash.
5. Connect the lead from suppressor capacitor to the switch terminal of the ignition coil and clamp the bracket under the coil mounting bracket.
6. Connect the lead of the remaining suppressor capacitor to the armature terminal of the generator (the larger of the two terminals) and clamp the case mounting bracket under a generator assembly bolt.
7. As supplied, the receivers are fitted with a N.S.W. dial scale; for use in other States, alternative dial scales have been provided. To change dial scale, unscrew the two screws securing the dial lens and lift lens out; change the scale and replace lens.

GENERAL CONTD.

8. Fully extend the aerial, switch the receiver on and tune to approximately 1500 Kc/s., but not to a signal. With a small screwdriver adjust the aerial trimmer for maximum noise. If a distinct peak cannot be obtained, remove the 22pF capacitor which is wired in parallel with the trimmer INSIDE the receiver.
9. In the automatic model, set the pressbuttons on the desired stations as detailed in the operating instructions.

NOTE:

The interference suppression components fitted as described, are all that would normally be required; however, faulty spark plugs or burnt contact breaker points can cause radio interference as well as reducing the performance of the car.