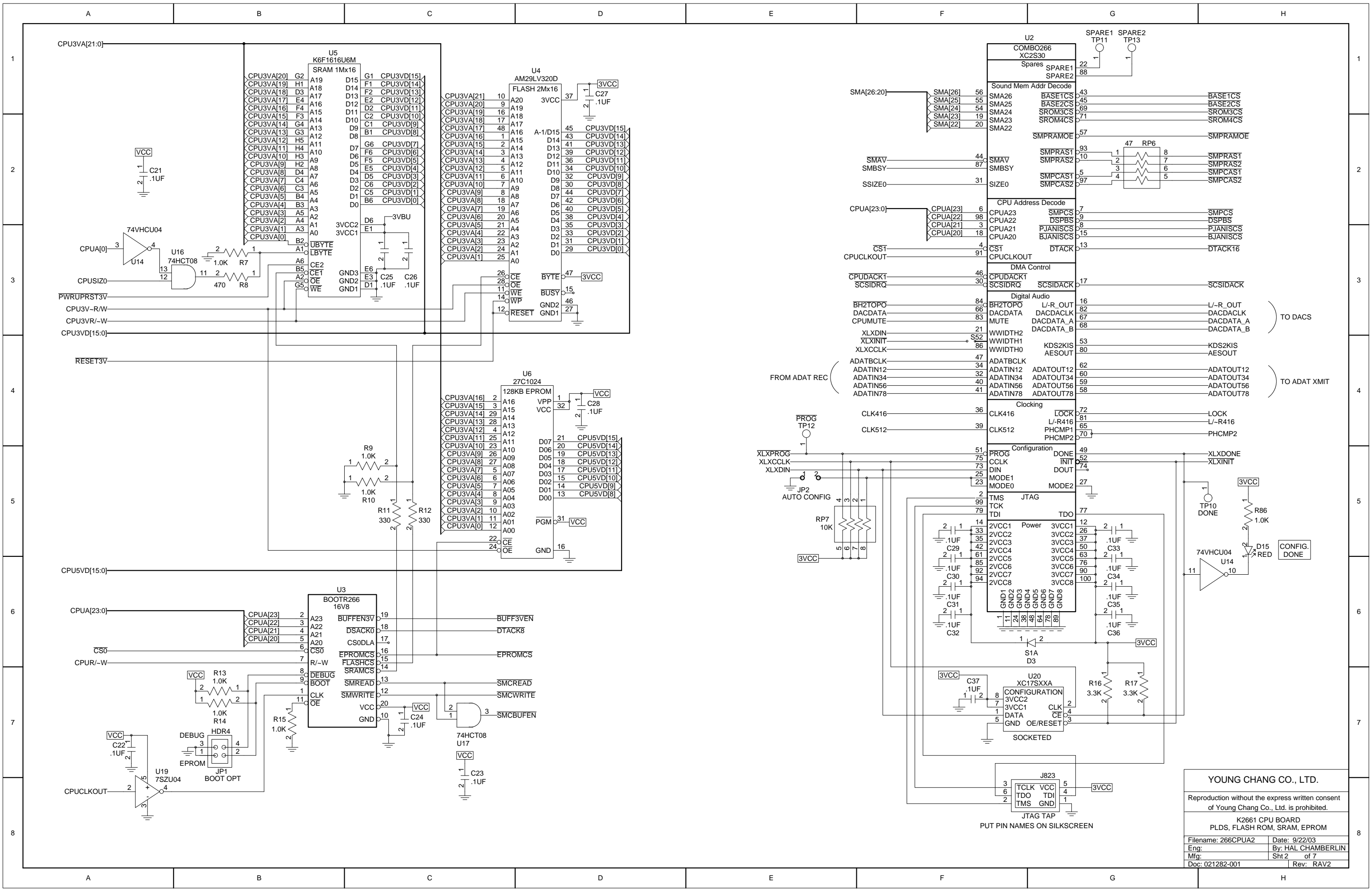


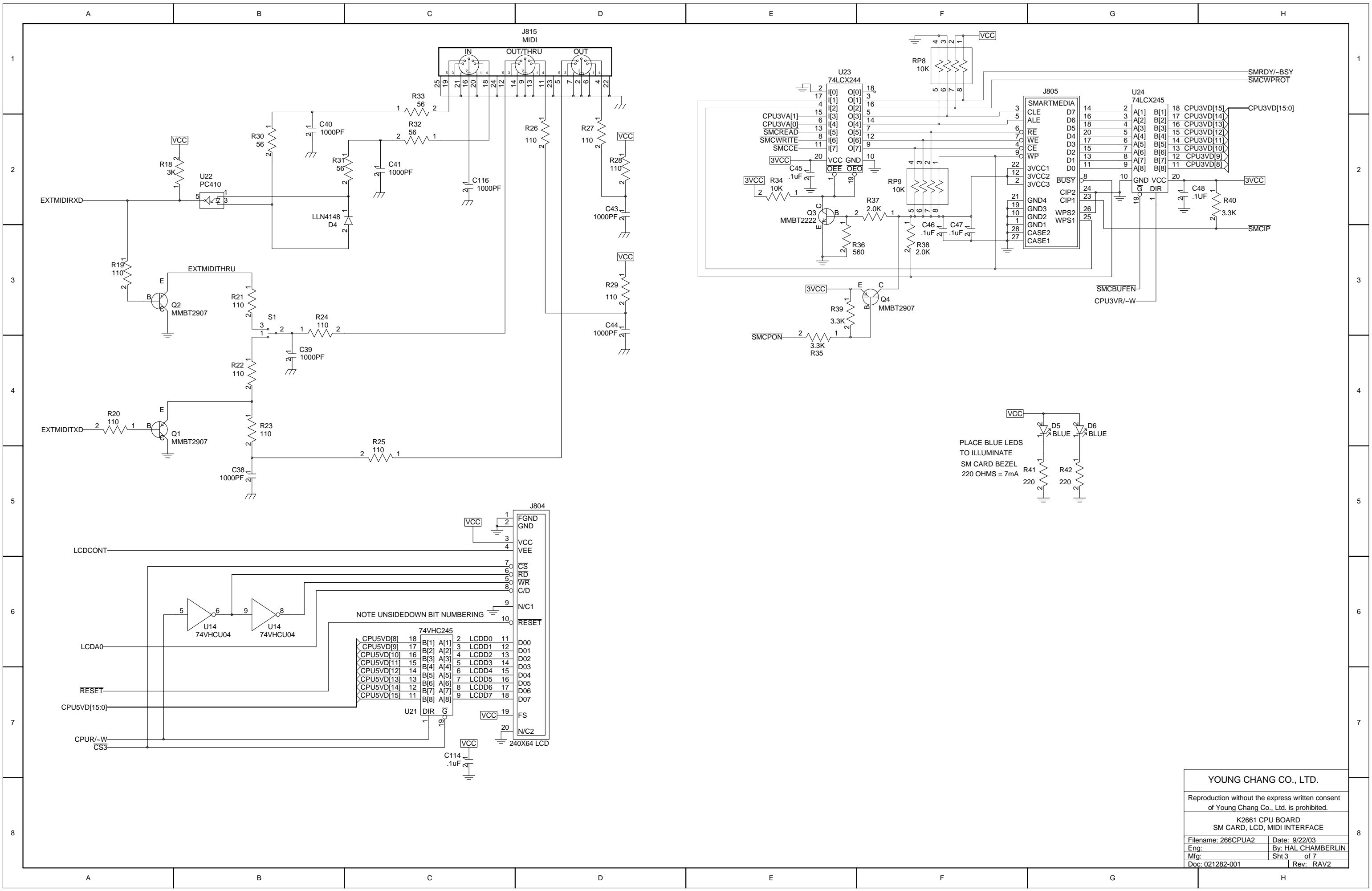
ONE CAPACITOR PER 2 VCC PINS OF U1

YOUNG CHANG CO., LTD.	
Reproduction without the express written consent of Young Chang Co., Ltd. is prohibited.	
K2661CPU BOARD CPU AND BUFFERS	
Filename: 266CPUA2	Date: 9/22/03
Eng:	By: HAL CHAMBERLIN
Mfg:	Sht 1 of 7
Doc: 021282-001	Rev: RAV2

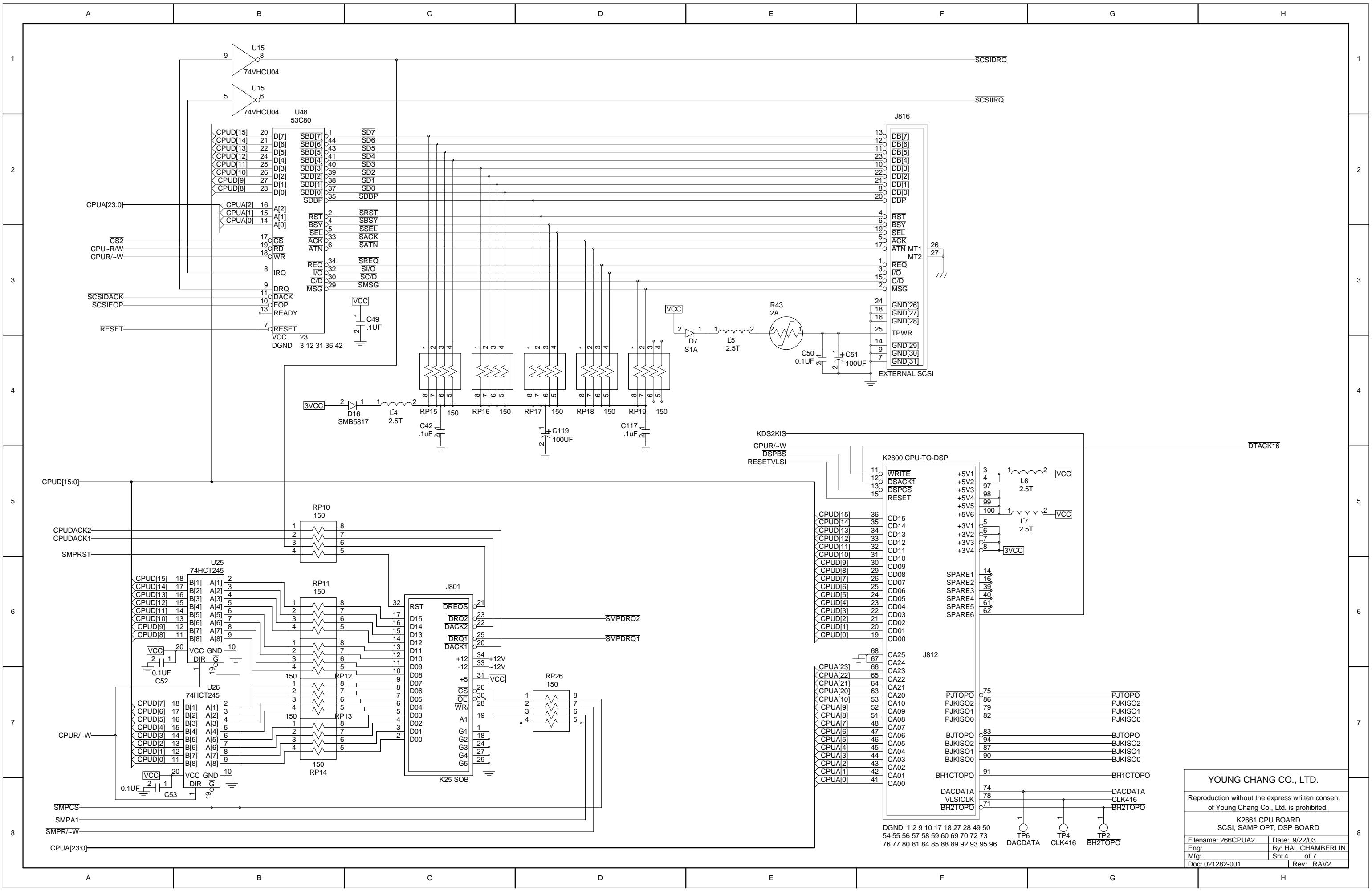


YOUNG CHANG CO., LTD.
 Reproduction without the express written consent of Young Chang Co., Ltd. is prohibited.
 K2661 CPU BOARD
 PLDS, FLASH ROM, SRAM, EPROM
 Filename: 266CPUA2 Date: 9/22/03
 Eng: By: HAL CHAMBERLIN
 Mfg: Sht 2 of 7
 Doc: 021282-001 Rev: RAV2

PUT PIN NAMES ON SILKSCREEN

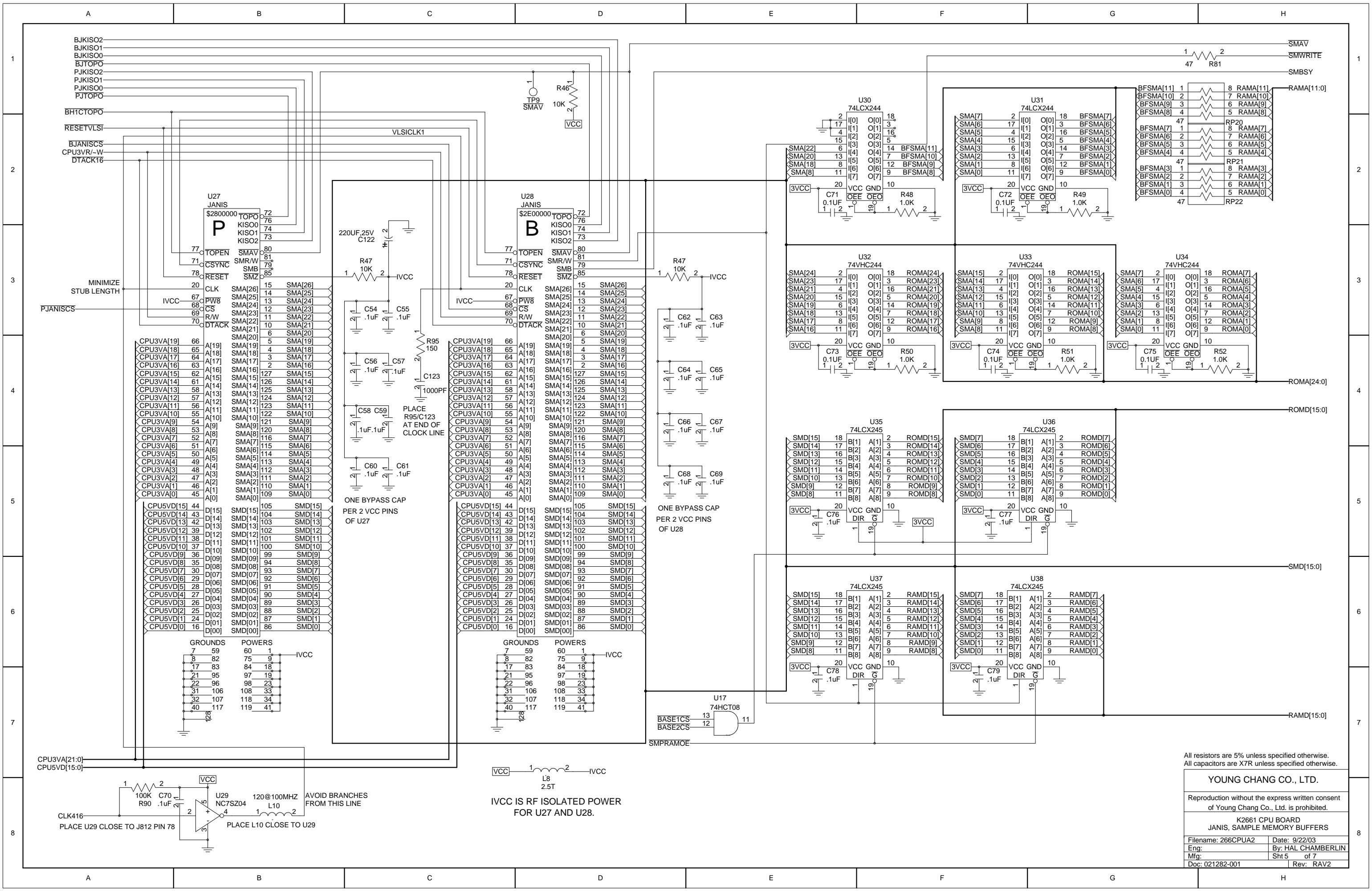


PLACE BLUE LEDS TO ILLUMINATE SM CARD BEZEL
 220 OHMS = 7mA



YOUNG CHANG CO., LTD.
 Reproduction without the express written consent of Young Chang Co., Ltd. is prohibited.
 K2661 CPU BOARD
 SCSI, SAMP OPT, DSP BOARD
 Filename: 266CPUA2 Date: 9/22/03
 Eng: By: HAL CHAMBERLIN
 Mfg: Sht 4 of 7
 Doc: 021282-001 Rev: RAV2

DGND 1 2 9 10 17 18 27 28 49 50
 54 55 56 57 58 59 60 69 70 72 73
 76 77 80 81 84 85 88 89 92 93 95 96



All resistors are 5% unless specified otherwise.
 All capacitors are X7R unless specified otherwise.

YOUNG CHANG CO., LTD.

Reproduction without the express written consent of Young Chang Co., Ltd. is prohibited.

K2661 CPU BOARD
 JANIS, SAMPLE MEMORY BUFFERS

Filename: 266CPUA2 Date: 9/22/03
 Eng: By: HAL CHAMBERLIN
 Mfg: Sht 5 of 7
 Doc: 021282-001 Rev: RAV2

IVCC IS RF ISOLATED POWER FOR U27 AND U28.

AVOID BRANCHES FROM THIS LINE

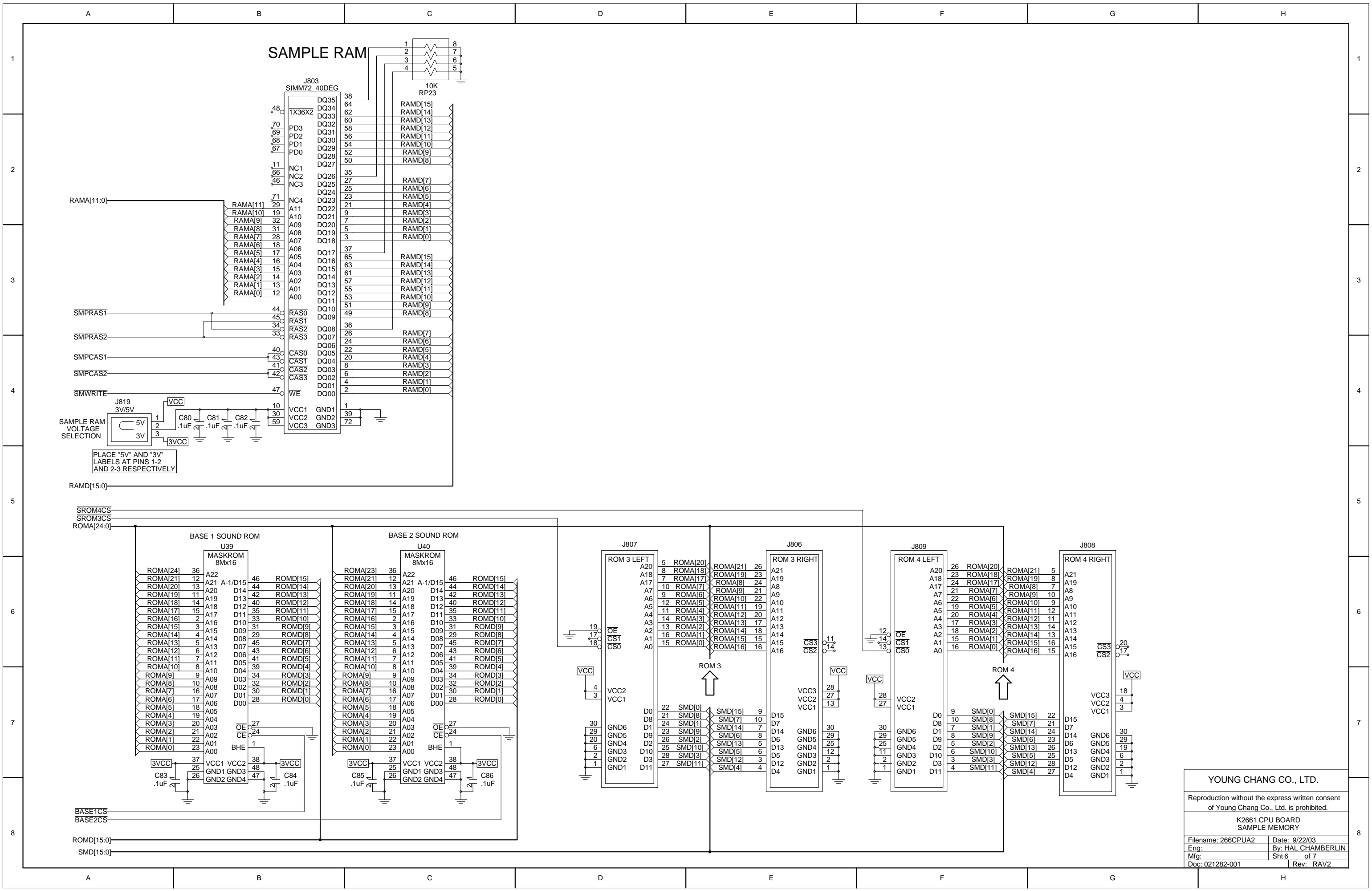
PLACE U29 CLOSE TO J812 PIN 78

PLACE L10 CLOSE TO U29

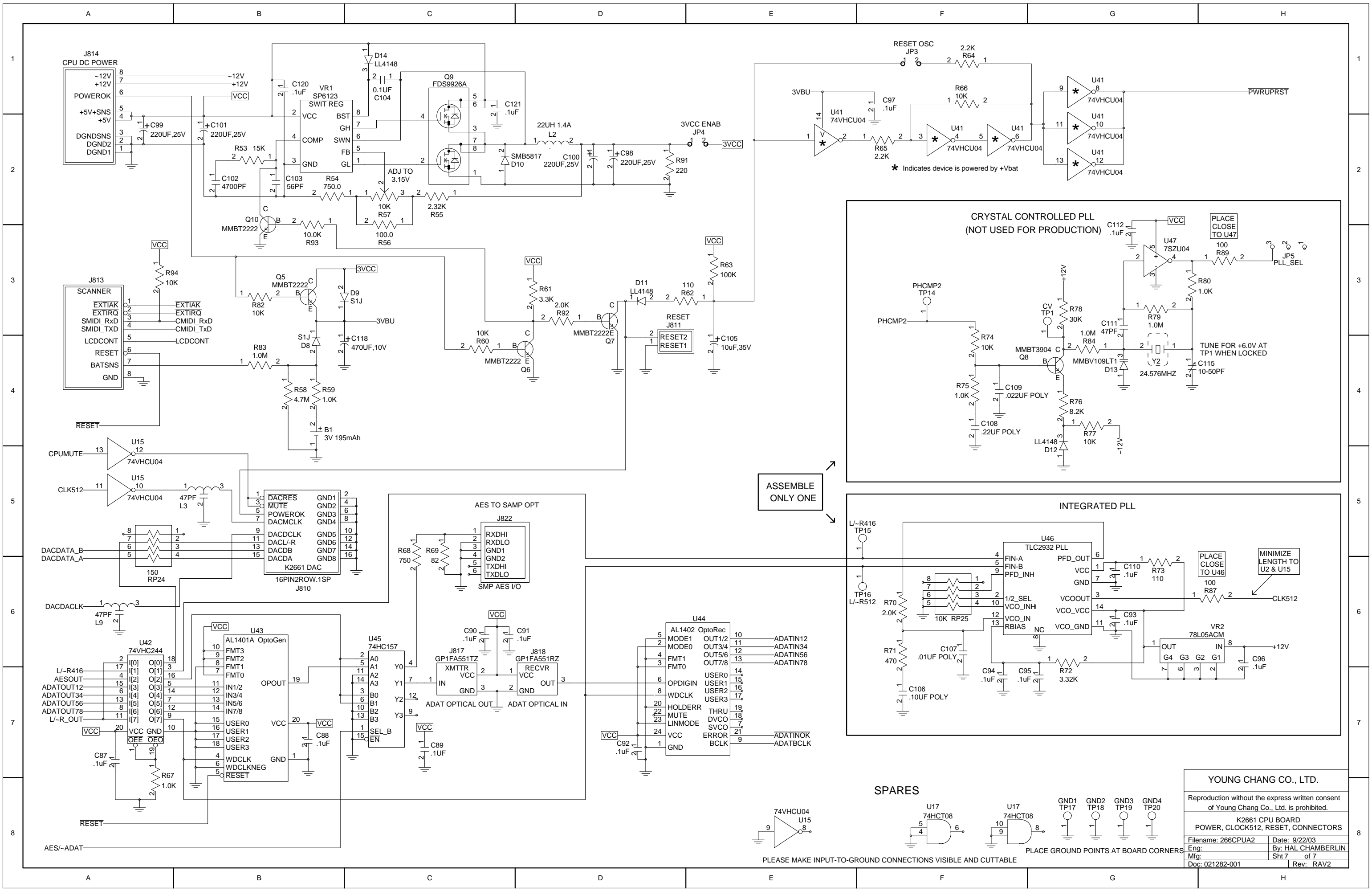
PLACE R95/C123 AT END OF CLOCK LINE

ONE BYPASS CAP PER 2 VCC PINS OF U27

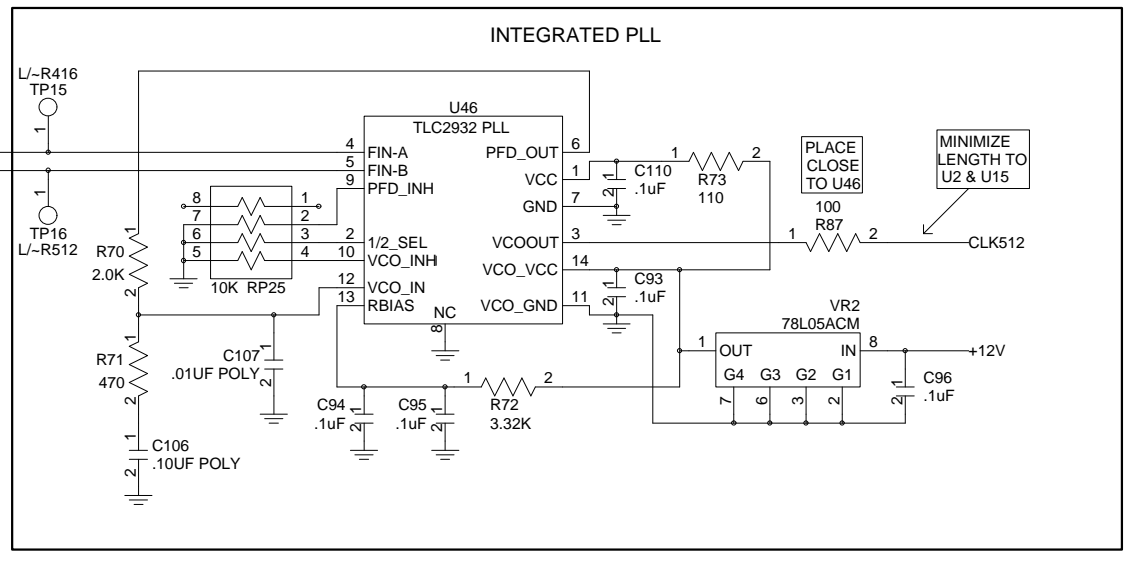
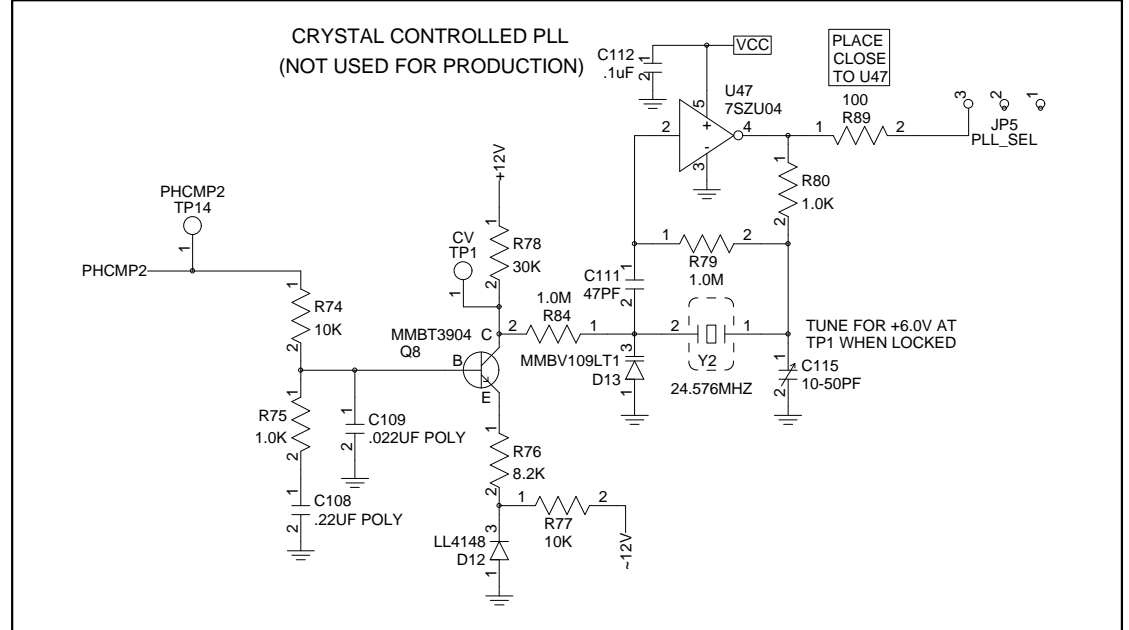
ONE BYPASS CAP PER 2 VCC PINS OF U28



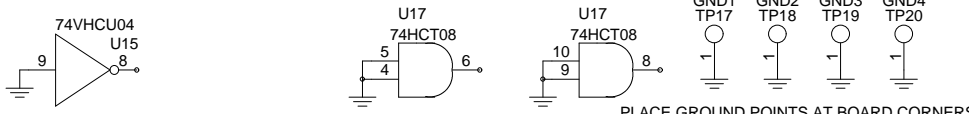
YOUNG CHANG CO., LTD.
 Reproduction without the express written consent of Young Chang Co., Ltd. is prohibited.
 K2661 CPU BOARD
 SAMPLE MEMORY
 Filename: 266CPUA2 Date: 9/22/03
 Eng: By: HAL CHAMBERLIN
 Mfg: Sht 6 of 7
 Doc: 021282-001 Rev: RAV2



ASSEMBLE ONLY ONE



SPARES



YOUNG CHANG CO., LTD.	
Reproduction without the express written consent of Young Chang Co., Ltd. is prohibited.	
K2661 CPU BOARD POWER, CLOCK512, RESET, CONNECTORS	
Filename: 266CPUA2	Date: 9/22/03
Eng: HAL CHAMBERLIN	By: HAL CHAMBERLIN
Mfg: Sht 7	of 7
Doc: 021282-001	Rev: RAV2