

'diamond-dot'

CAR RADIO DIVISION, ELECTRONIC INDUSTRIES LTD.

ASTOR HOUSE: 161-173 STURT STREET, SOUTH MELBOURNE Phone: 69 0300

SERVICE DATA

JAGUAR - 6

File : JAGUAR

Date : 22.8.66

Page : 1

JAGUAR SERIES "2"—2.4 & 3.4 & 3.8 LITRE

INSTALLATION INSTRUCTIONS FOR FITTING

ASTOR 12 VOLT CAR RADIO

MODELS PD-C - - and MD-C - - "J" SERIES RECEIVERS

In addition to the selected receiver the installation requires:-

Installation Accessory Package - Part No. 7281-106-07

Aerial - 5 Section, telescopic whip, top mount type - Part No. 4074-044-04

or Aerial - 5 Section, telescopic whip, lock down type - Part No. 4074-052-04

WARNING: BATTERY CONNECTION OF INCORRECT POLARITY WILL DAMAGE THE RECEIVER

Before commencing installation disconnect leads from car battery. Note polarity of battery terminal which is connected to car chassis then set receiver polarity changeover switch to corresponding position, i.e. "+" position, positive to chassis "-" position, negative to chassis.

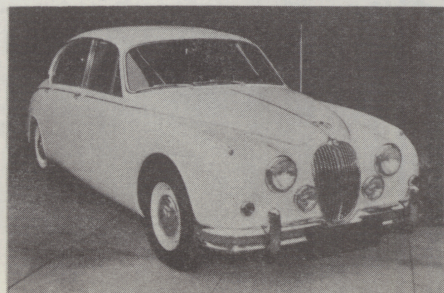
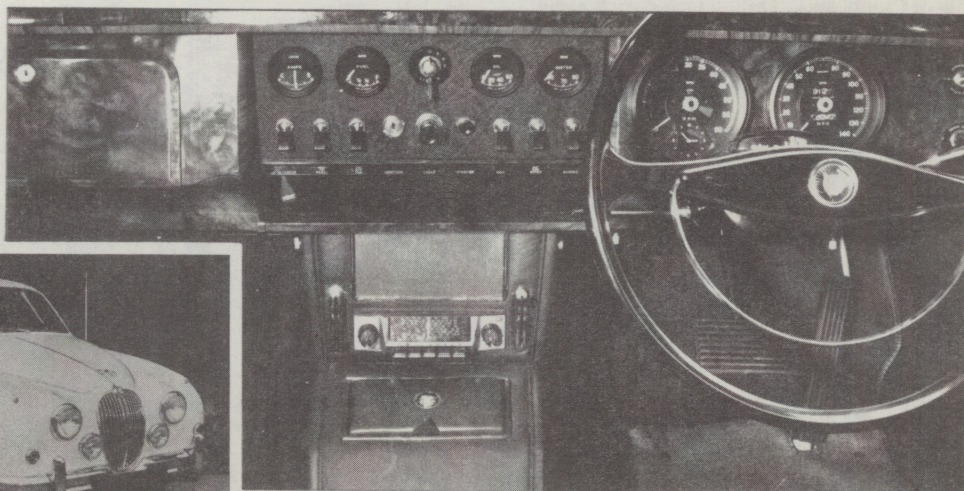
NOTE: AERIAL TRIMMER located on rear passenger side of receiver is to be adjusted during the fitting of the receiver to the car as detailed overleaf.

THE AERIAL mounted on top of passenger side fender as detailed.

TOP MOUNT TYPE - Remove trim from passenger side kick pad. During installation of aerial, lead-in cable is to be fed through the top hole of the two exposed in side wall. Mark a position on top of passenger side fender $5\frac{3}{4}$ " from front edge of door and $1\frac{5}{8}$ " out from cowl beneath chrome strip.

FULLY RETRACTABLE AERIAL - Remove trim and cover plate from passenger side kick pad. During installation, the aerial is to be fed into the cavity exposed when cover plate is removed. Mark a position on top of passenger side fender $5\frac{3}{4}$ " from front edge of door and $1\frac{5}{8}$ " out from cowl beneath chrome strip.

Proceed to install selected aerial as detailed in instructions supplied.



AERIAL LEAD-IN CABLE

- 1 Remove passenger side trim kick pad.
- 2 Feed aerial cable through the 11/16" hole in passenger side wall (nearest to rubber grommet) that surrounds a single lead, into the interior of car.
- 3 Refit and securely tighten the passenger side kick pad and trim.

THE SPEAKER: 7"x 5" attached to a baffle assy. is to be mounted behind the grille on radio panel.

- 1 Remove front seat cushions.
- 2 Remove the knurled stud on transmission tunnel cover situated between the front seats.
- 3 Remove the ash-tray.
- 4 Remove the knurled studs fastening side trims to car.
- 5 Remove side trims and pull back tunnel cover.
- 6 Remove the two heater control cables attached to sides of radio panel.
- 7 Remove screw fastening radio panel to transmission tunnel then remove the two nuts fastening radio panel to instrument panel.
- 8 Remove and discard the oblong cover panel situated below speaker grille. Cut leather from holes at each end of oblong opening also cut leather from oblong opening. NOTE : Do not cut flush to opening, allow approx. 1/16" overhang into opening in metal.
- 9 Remove four nuts located at rear of speaker grille.
- 10 Place speaker assy. over the four studs so that the speaker magnet is downward.
- 11 Fasten with flat washers supplied and original nuts. Leave nuts fingertight.

THE RECEIVER: is to be mounted behind the radio panel which was removed from above transmission tunnel. A bracket supplied, supports rear of receiver to driving side heater cable clamp.

- 1 Press the two spacer rings supplied over the control bush lock nuts then fit dial pointer to carriage arm.
- 2 Fit dial supplied with receiver to escutcheon.
MANUAL RECEIVER ONLY: Fit filler bar to push button opening; fasten securely with speednuts.
- 3 Place receiver behind radio panel. Spindles are to protrude out through panel openings.
- 4 Place escutcheon, chrome washers and barrel nuts on to front of panel. Align, securely tighten nuts then fit manual control knobs. Slide dust shield out against rear of panel and securely tighten the two screws.
- 5 Position speaker assy. downward as close as possible to receiver can then securely tighten nuts fastening baffle.
- 6 Remove and retain the nut and washers from the driving side heater control cable clamp.
- 7 Place the bracket supplied on to the driving side of receiver so that one of the slots in bracket locates over the heater control cable clamp screw. Refit washers and nut to clamp screw. Leave screw fingertight.
- 8 The slot in the other end of bracket is to locate over thread form in side of receiver. Place a flat washer on to a $\frac{3}{8}$ "x No.8 bdr.hd. screw; insert screw through slot in bracket and securely tighten.
- 9 Insert aerial cable plug into socket on passenger side rear corner of receiver. Insert plug on end of speaker lead into socket adjacent to receiver battery lead entry.
- 10 Re-position the radio panel; refit and securely tighten the screw fastening radio to transmission tunnel, Refit and securely tighten the two nuts fastening radio to instrument panel.

- 11 Insert the 3 amp. fuse supplied into the moulded fuse holder, connect fuse holder to fuse cover on end lead from receiver. Hanging from the wiring loom there is a short length of lead with an insulated socket attached; insert contact plug on end of lead into this socket.
- 12 Reconnect leads to car battery.
- 13 Switch receiver "ON" and allow it to operate for several minutes.
- 14 AERIAL TRIMMER adjust as follows :- Raise aerial to half extended height.
NOTE: If a fully retractable aerial is fitted raise the large diameter outer tube until it is against stop in aerial base. Tune receiver to a weak station near 1000 Kc.s (approximately centre of dial) adjust trimmer for maximum volume of signal.
- 15 Switch receiver "OFF". Disconnect leads from car battery.
- 16 Refit and securely tighten the heater control cables.
- 17 Refit transmission tunnel cover and securely tighten the knurled stud, then refit side trims and securely tighten the knurled studs.
- 18 Refit ash-tray and front seat cushions.

INTERFERENCE ELIMINATION: No spark plug suppressors are required.

Distributor Suppressor : Insert a screw-in type suppressor P/No. 4021-012-01 in the high tension lead from ignition coil a few inches from where it enters the distributor. Make sure the lead is fitted well into the suppressor, and that good contact is made. Securely bind both ends of suppressor to lead with adhesive tap.

NOTE: The contacting surfaces and mount positions for the by-pass capacitors must be entirely free of paint and varnish to ensure a good electrical contact.

Generator: .5uF Capacitor P/No. 4009-024-01 (large Hole in lug.) Loosen off generator frame bolt nearest the armature terminal. Slide mount foot under head of bolt. Securely tighten bolt, then connect lug on lead to armature terminal, NOT THE FIELD TERMINAL.

Ignition Coil: .5uF Capacitor P/No. 4009-024-02 (small hole in lug.) Loosen one of the coil mount bracket screws, then slide mount foot under screw head. Securely tighten screw, connect lug on lead to coil battery terminal.

Reconnect leads to car battery.

JAGUAR SERIES "2"—2·4 & 3·4 & 3·8 LITRE

MODELS PD-C - - and MD-C - - "J" SERIES RECEIVERS

COMPONENT PARTS LIST

4077-093-67 Aerial Lead-in Cable (1) 48" overall

SPEAKER AND MOUNTING ACCESSORIES

7296-051-01 Speaker and Baffle Assy. (1)
includes:-
4056-012-11 Speaker (1) C75L36/46/15
7009-052-02 Baffle
1171-023-08 Lead - 18" required
7171-015-01 Plug (1) on end of lead
7244-034-01 Terminal (2) on end of lead
7261-163-04 Washer (4) flat steel, $\frac{3}{8}$ "x 11/64"

RECEIVER MOUNTING ACCESSORIES

7055-425-02 Spacer ring (2) control bush lock nuts
7173-042-03 Dial Pointer (1)
7084-147-03 Escutcheon Assy. (1)
includes:-
7008-123-01 "ASTOR" metcal
7081-001-01 "Diamond Dot" emblem
7261-484-02 Chrome Washer (2)
7150-854-20 Barrel Nut (2)
7124-425-01 Knob (2) antiference and tone, rear
7124-424-11 Knob (2) tuning and volume, front
7027-081-02 Bracket (1)
7261-164-02 Washer (1) flat steel, 9/16"x 11/64"
7201-079-08 Screw (1) $\frac{3}{8}$ "x No. 8 bdr. hd.
4071-010-01 Fuse (1) 3 Amp.
7113-001-01 Fuse Holder (1)
7225-012-02 Spring (1)
7086-125-04 Contact (1)
1169-051-08 Lead - 18" required
7171-029-01 Terminal (1) on end of lead

INTERFERENCE ELIMINATION ACCESSORIES

4021-012-01 Suppressor (1) screw-in type, distributor
4009-024-02 Capacitor (1) .5uF, ignition coil By-pass
4009-024-01 Capacitor (1) .5uF, generator by-pass

COMPONENTS SUPPLIED WITH RECEIVER

7119-046-01 Filler Bar (1)
7152-272-01 Speednut (2)
7065-011-01 Fuse Cover (1)
7086-125-04 Contact (1) fuse cover
7070-115-11 Dial Reading