

AIR CHIEF

CAR RADIO DIVISION, RADIO CORPORATION PTY. LTD.

1090-1140 Centre Road, Clayton — Phone 544 2444

Holden: 20A

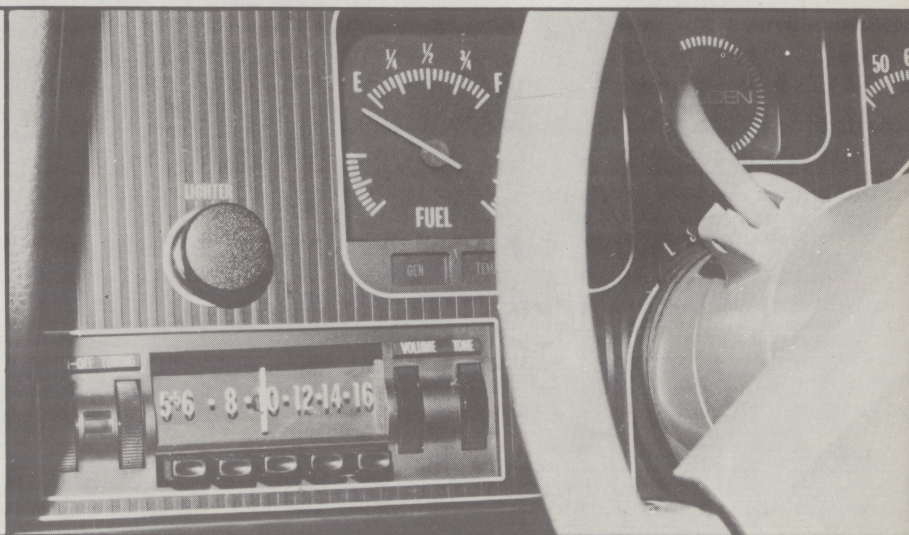
File: Holden

Date: 22-5-72

Revised May 1972

INSTALLATION INSTRUCTIONS for fitting AIRCHIEF CAR RADIO RECEIVERS into the HOLDEN MODEL HQ

- | | | |
|--|-----------------------------|-------------------------|
| CW421 GM-H Radio Package (PN-C20AE) | — 11 Transistor, Pushbutton | — GM-H Part No. 2815951 |
| CW422 GM-H Radio Package (MN-C20AE) | — 11 Transistor, Manual | — GM-H Part No. 2815817 |
| Top-Mount Antenna (factory-fitted with above) | | — GM-H Part No. 2824959 |
| | | |
| CW709 NASCO Radio Package (PN-C27AE) | — 13 Transistor, Pushbutton | — GM-H Part No. 2819838 |
| CW423 NASCO Radio Package (PN-C20AE) | — 11 Transistor, Pushbutton | — GM-H Part No. 2818738 |
| CW424 NASCO Radio Package (MN-C20AE) | — 11 Transistor, Manual | — GM-H Part No. 2818737 |
| CW221 NASCO Radio Package (MN-C29AE) | — 8 Transistor, Manual | — GM-H Part No. 2819839 |
| Antenna (included in NASCO Radio Packages): | | |
| Lock-Down Deluxe type (supplied with 13-transistor receiver) | | — Part No. 4074-175-02 |
| Lock-Down type (supplied with 11-transistor receiver) | | — Part No. 4074-174-02 |
| Top Mount type (supplied with 8-transistor receiver) | | — Part No. 4074-154-02 |
| | | |
| Options : | | |
| 7296-114-01 Rear Speaker and Fader Control Package | | — GM-H Part No. 2818739 |
| 4074-144-04 Motorised Antenna Package - rear mount | | — GM-H Part No. 2823972 |
| 4074-145-51 Motorised Antenna Package - front mount | | — GM-H Part No. M36746 |



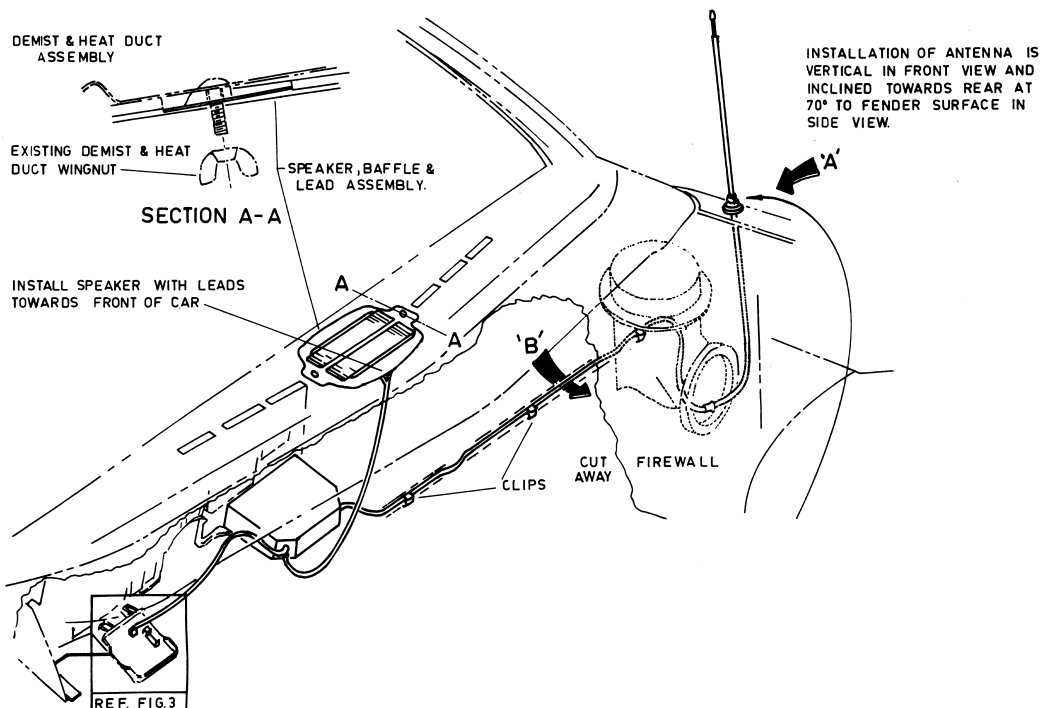
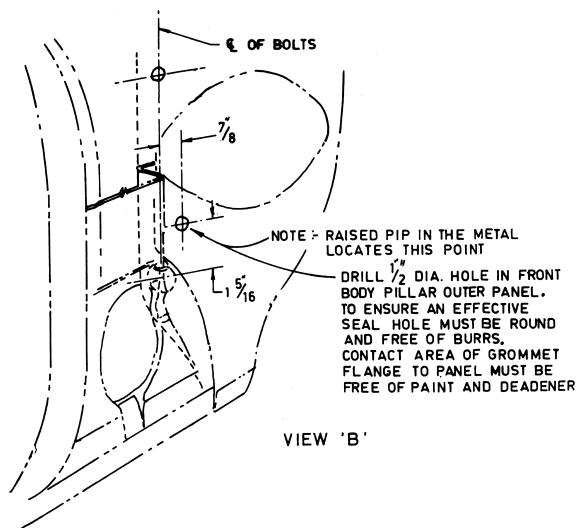
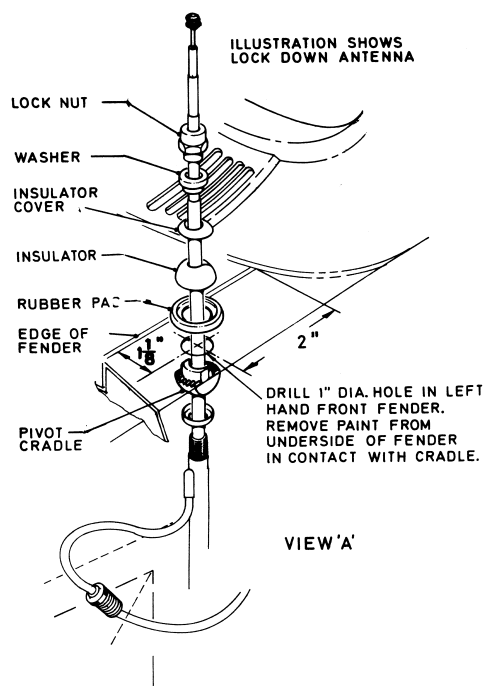
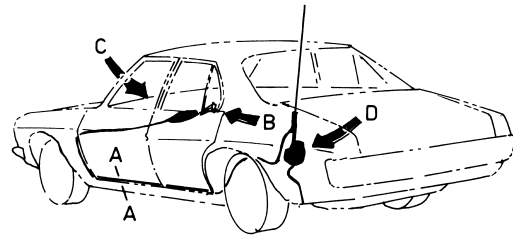
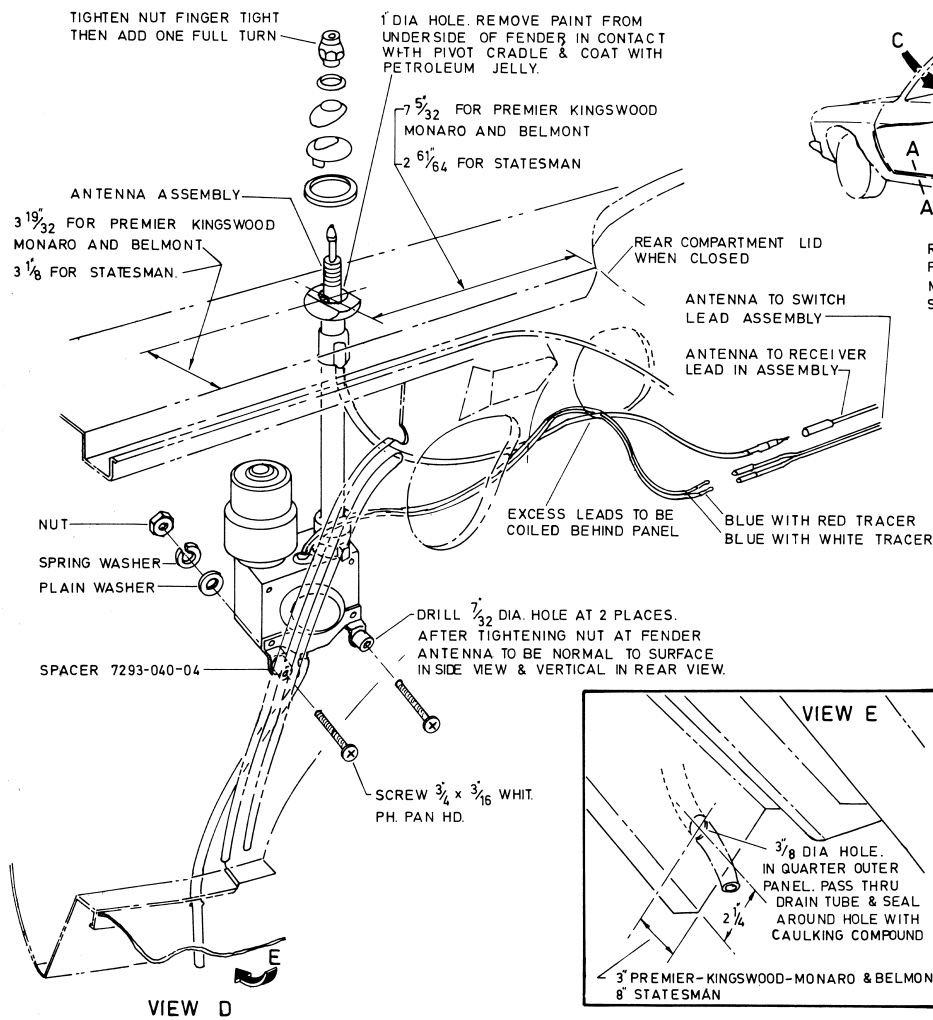
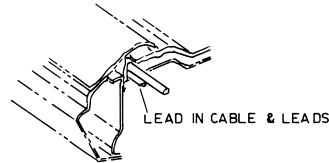


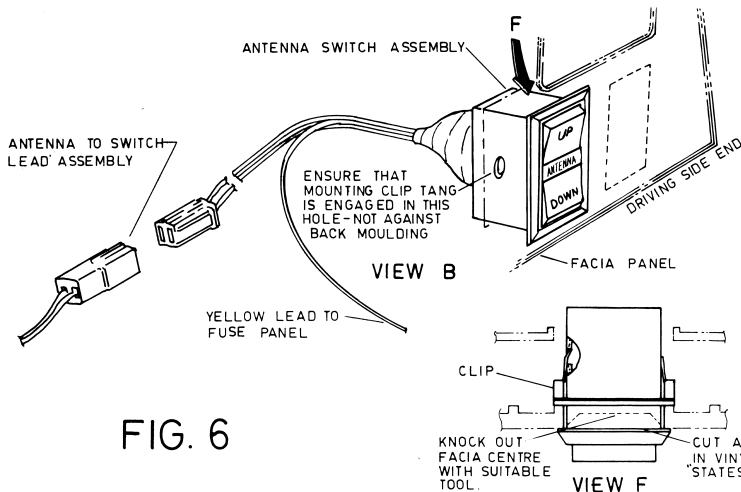
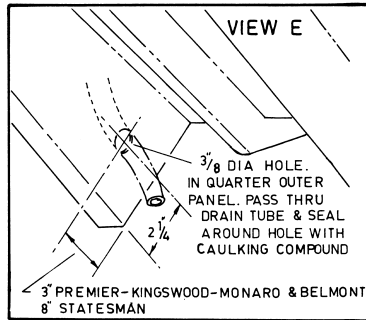
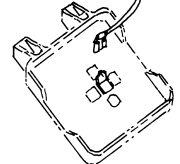
FIG. 1



RUN LEAD-IN CABLE & LEADS UNDER SILL PLATE & BEHIND SIDE TRIM MUST CLEAR REAR SEAT BELT ANCHOR & SEAT FRAME WIRES



CONNECT TO TERMINAL N-15 ON FUSE PANEL



ANTENNA TRIMMER ADJUSTMENT
NOTE:- LARGE DIAMETER OUTER TUBE MUST BE RAISED AGAINST STOP IN ANTENNA BASE
ADJUST TRIMMER FOR MAXIMUM VOLUME WITH RECEIVER TUNED TO WEAK STATION NEAR CENTRE OF DIAL WITH ANTENNA HALF EXTENDED.

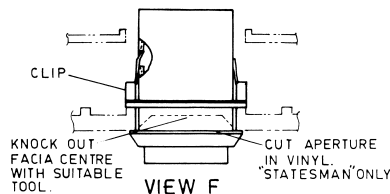
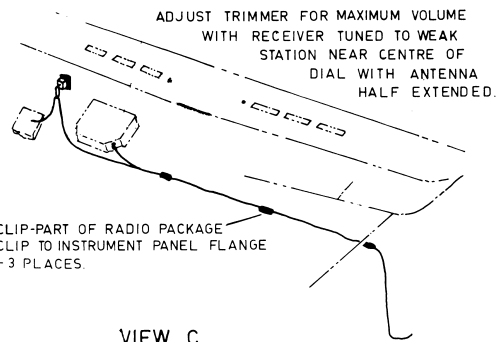
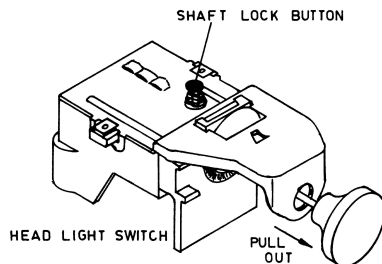
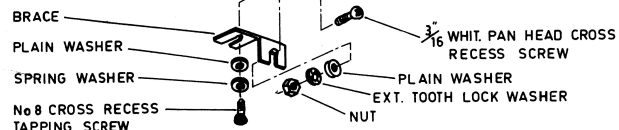
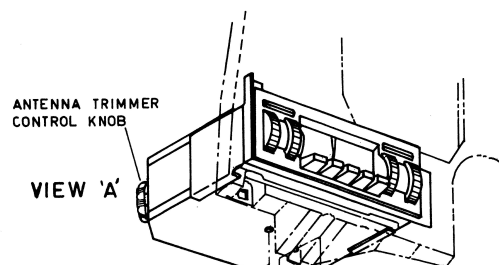
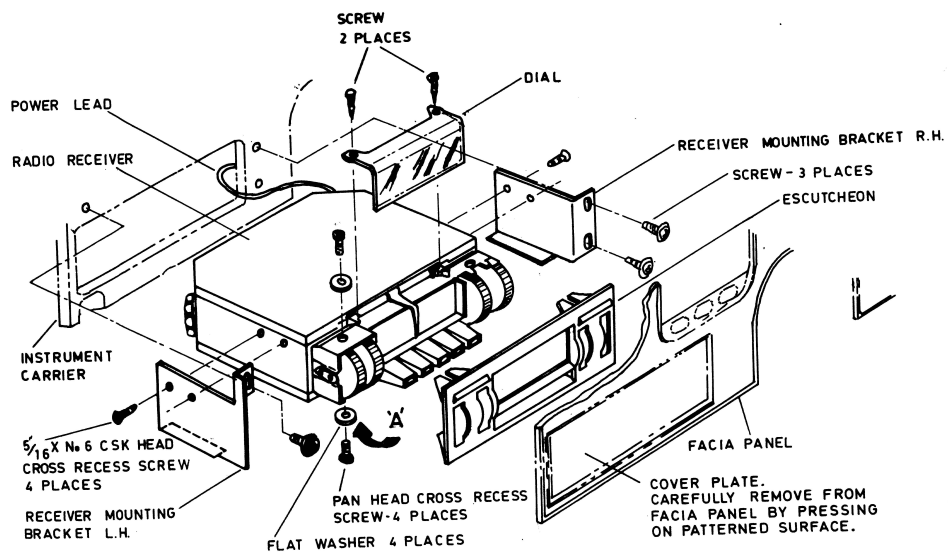


FIG. 6



PULL LIGHT SWITCH SHAFT OUT TO HEADLAMP 'ON' POSITION. PRESS LOCK BUTTON INWARD THEN PULL SHAFT OUT OF SWITCH

FIG. 2

ASSEMBLE FUSE CLIPS INTO BLOCK POSITIONS No 17 & 18. INSERT FUSE INTO CLIPS.

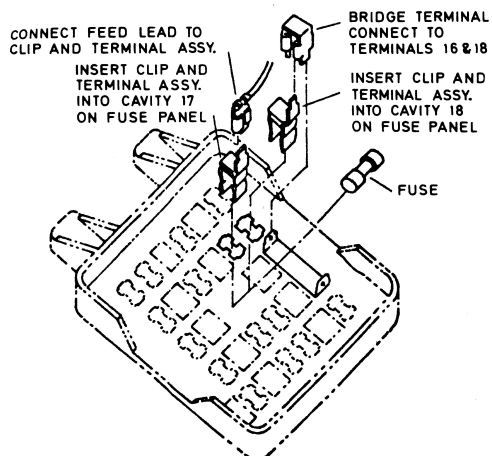
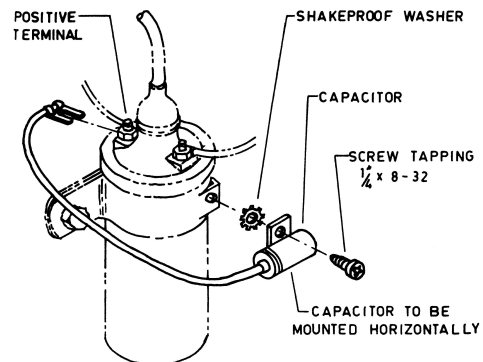
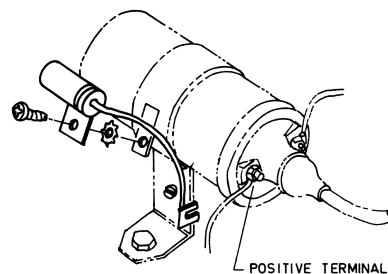


FIG. 3



6 CYLINDER ENGINE



V8 ENGINE

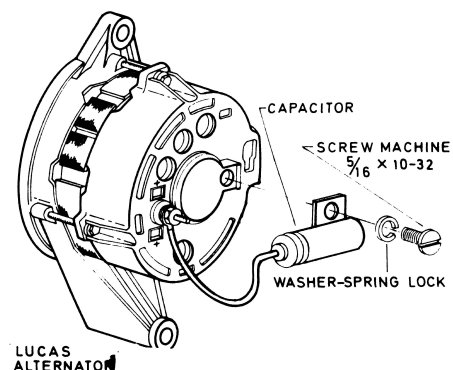
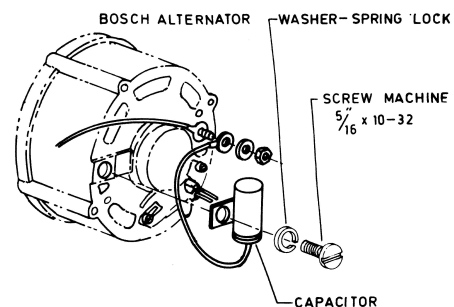
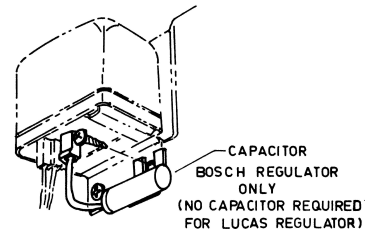


FIG. 4

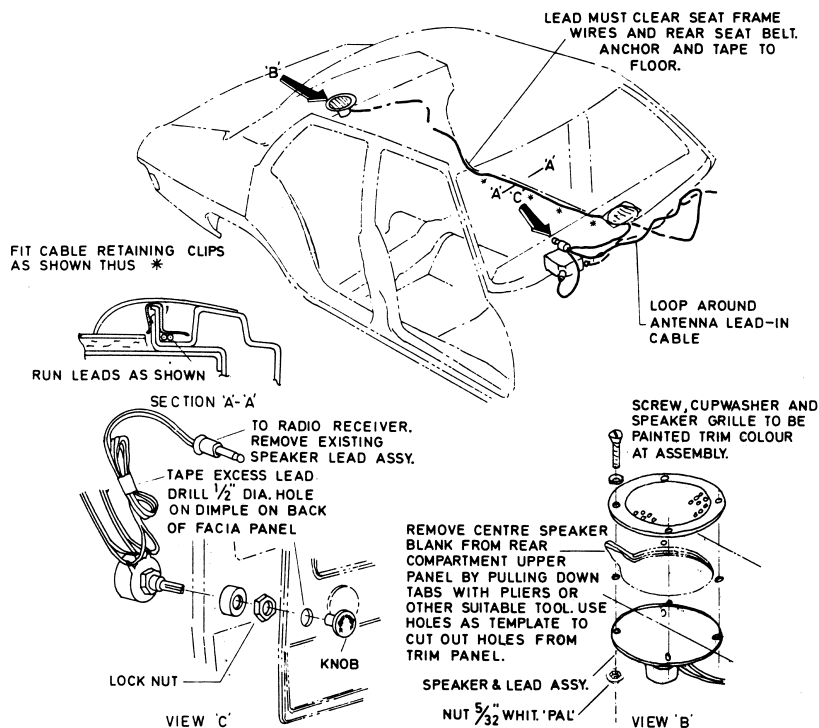


FIG. 5

INSTALLATION PROCEDURE

WARNING: Battery lead of these receivers must be connected only to the POSITIVE terminal of a battery. Connection to incorrect polarity will damage the receiver.
DISCONNECT LEADS FROM CAR BATTERY BEFORE COMMENCING INSTALLATION.

1. ANTENNA - Fig. 1.

- Install antenna and lead-in cable as shown. If a rear-mount antenna is being fitted, refer to Fig. 6.

2. SPEAKER - Fig. 1.

- Fasten speaker and baffle assembly to panel with existing wing nuts.

3. RECEIVER - Fig. 2 and Fig. 3.

- Remove closure panel from beneath instrument panel (six screws).
- Remove shaft from headlight switch.
- Remove cigar lighter from socket.
- Remove facia panel from instrument panel (four screws at base).
- Carefully tap out radio aperture cover plate.
- Fit receiver as shown.

NOTE: If applicable, carry out Item 6 and/or Item 7 before replacing instrument panel facia.

4. INTERFERENCE SUPPRESSION - Fig. 4.

- Fit capacitors as shown.

5. ANTENNA TRIMMER ADJUSTMENT

It is MOST IMPORTANT that the antenna trimmer at the rear left corner of the receiver be adjusted at conclusion of installation.

6. ADDITIONAL SPEAKER (optional) - Fig. 5.

- Fit rear speaker and fader control as shown.

7. MOTORISED ANTENNA (optional) - Fig. 6.

- Fit motorised antenna and antenna control switch as shown.

SCHEDULE OF PARTS REQUIRED FOR INSTALLATIONCOMPONENT PACKAGES

| | |
|-------------|--|
| 7001-129-01 | Component Package A |
| | contains: |
| 4009-045-36 | Capacitor (1) 0.5 μ F regulator by-pass, G.M.H. No. 7428361 |
| 7001-129-07 | Component Package B |
| | contains: |
| 7244-050-01 | Terminal bridge (1) G.M.H. No. 7426915 |
| 7055-598-01 | Clip and terminal assy. (2) G.M.H. No. 2814603 |
| 4071-010-02 | Fuse (1) 3 amp, G.M.H. No. 9426341 |
| 7055-291-51 | Clip (3) lead anchor, G.M.H. No. SP-1864 |
| 7209-527-02 | Screw (3) 1/2" x 10-24 Phillips pan hd |
| 7001-129-04 | Component Package C |
| | contains: |
| 4009-045-43 | Capacitor (1) 0.5 μ F alternator by-pass G.M.H. No. 7437337 |
| 4009-045-08 | Capacitor (1) 0.5 μ F coil by-pass, G.M.H. No. 7428362 |
| 7200-078-11 | Screw (1) 5/16" x 10-32 ch. hd, G.M.H. No. SP-1679 |
| 7266-012-22 | Washer (1) No. 10 spring, G.M.H. No. 120217 |
| 7209-522-11 | Screw (1) 1/4" x 8-32 Phillips hd, G.M.H. No. 449809 |
| 7262-012-02 | Washer (1) shakeproof, 3/16" int., G.M.H. No. 121752 |
| 7001-129-08 | Component Package D |
| | contains: |
| 7028-918-02 | Brace (1) base of receiver |
| 7201-579-28 | Screw (1) 3/8" x No. 8 Phillips pan hd, G.M.H. No. 9414711 |
| 7261-164-02 | Washer (1) flat steel, 9/16" x 11/64", G.M.H. No. SP-1860 |
| 7266-012-22 | Washer (1) No. 8 spring, G.M.H. No. 121841 |
| 7028-919-02 | Bracket (1) driving side |
| 7028-920-02 | Bracket (1) passenger side |
| 7201-527-22 | Screw (4) 5/16" x No. 6 Phillips csk hd |
| 7198-579-10 | Screw (1) 1/2" x 3/16" Whit. Phillips pan-hd |
| 7261-218-04 | Washer (1) flat steel, 9/16" x 13/64" |
| 7262-512-02 | Washer (1) shakeproof, 3/16" ext. |
| 7148-104-11 | Nut (1) 3/16" Whit. |

SPEAKER AND SPEAKER MOUNTING COMPONENTS

| | |
|-------------|------------------------------------|
| 7296-105-01 | Speaker and baffle assembly (1) |
| | includes: |
| 4056-004-18 | Speaker (1) 9" x 6" lantor covered |
| 7009-170-02 | Baffle assembly (1) |
| 7310-015-01 | Nut (4) 5/32" Whit. PAL type |
| 4077-174-02 | Lead assembly (1) |
| | includes: |
| 7171-015-01 | Plug (1) |
| 7244-034-01 | Terminal (2) |
| 1171-023-66 | Lead - 24" required |

COMPONENTS SUPPLIED WITH RECEIVER

| | |
|-------------|---|
| 7244-064-01 | Terminal (1) power lead G.M.H. No. 2965276 |
| 7173-056-03 | Pointer (1) |
| 4068-020-01 | Lamp (1) 12 volt, 1.2W, capless with leads |
| 7055-566-01 | Clip (1) lamp mount |
| 7201-526-16 | Screw (2) 5/8" x No. 4 Phillips csk hd - dial mount |
| 7005-090-21 | Dial Background - 13 transistor |
| 7005-090-11 | Dial Background - 11 transistor |
| 7005-090-01 | Dial Background - 8 transistor |
| 7070-133-03 | Dial (1) numerical |
| 7084-361-01 | Escutcheon (1) pushbutton |
| 7084-361-51 | Escutcheon (1) manual |
| 7201-577-07 | Screw (4) 1/2" x No. 6 Phillip pan hd - escutcheon mount |
| 7261-142-04 | Washer (4) escutcheon mount |
| 7008-417-05 | Metallic label (1) AIRCHIEF THIRTEEN |
| 7008-417-04 | Metallic label (1) AIRCHIEF ELEVEN |
| 7008-417-03 | Metallic label (1) AIRCHIEF EIGHT |

OPTIONAL DIALS

| | |
|-------------|-----------------------------------|
| 7070-133-02 | All State |
| 7070-133-04 | New South Wales |
| 7070-133-05 | Victoria/Tasmania |
| 7070-133-06 | Queensland/Northern Territory |
| 7070-133-07 | Western Australia/South Australia |