

# 'diamond-dot'

CAR RADIO DIVISION, ELECTRONIC INDUSTRIES LTD.

ASTOR HOUSE: 161-173 STURT STREET, SOUTH MELBOURNE Phone: 69 0300

## SERVICE DATA

HILLMAN - 9

File : HILLMAN

Date : 21.9.66

Page : 1

## HILLMAN MINX DELUXE SERIES VI AND HILLMAN GAZELLE SERIES VI

### INSTALLATION INSTRUCTIONS FOR FITTING

### CHRYSLER 12 VOLT CAR RADIO MODELS PD-C - - and MD-C - - "J" SERIES RECEIVERS

In addition to the selected receiver the installation requires:-

Installation Accessory Package - Chrysler Part No. 2796803

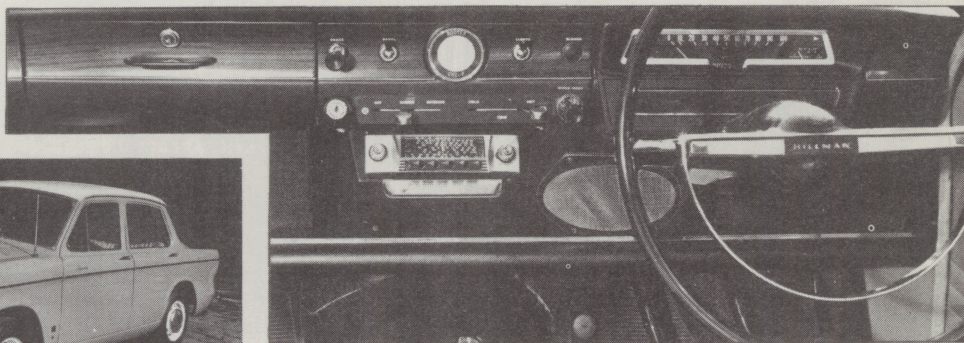
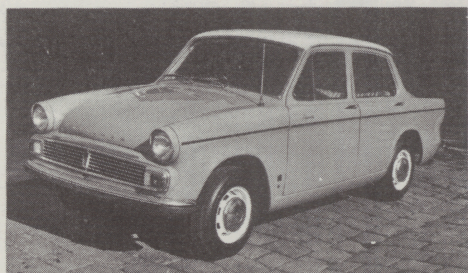
Aerial - 5 section, telescopic whip, top mount type- Chrysler Part No. 2794890  
or Aerial - 5 section, telescopic whip, lock down type- Chrysler Part No. 2794891

**WARNING:** BATTERY CONNECTION OF INCORRECT POLARITY WILL DAMAGE THE RECEIVER

Before commencing installation disconnect leads from car battery. Note polarity of the battery terminal which is connected to vehicle chassis then set receiver polarity changeover switch to corresponding position. i.e. "+" position, positive to chassis, "-" position, negative to chassis.

**NOTE:** AERIAL TRIMMER located on rear passenger side corner of receiver is to be adjusted at conclusion of installation.

**THE AERIAL** as selected is to be mounted on the passenger side fender at a position  $8\frac{1}{2}$ " forward from cowl-door-fender join line and  $4\frac{1}{2}$ " out from fender-bonnet join line. Continue installation as detailed in instructions supplied with aerial.





AERIAL LEAD-IN CABLE: Remove and discard rubber plug located in engine well wall adjacent to aerial.

From beneath fender insert plastic grommet supplied into vacated hole then feed cable through grommet into engine compartment.

With all excess cable inside car push ferrule on cable into grommet.

THE RECEIVER: When fitted into the housing assembly supplied, is to be mounted to the underside of the instrument panel, at the position occupied by the ashtray. A slide bracket for the ashtray is provided on the lower surface of the assy. A straddle bracket supports the front to the original ashtray slide.

- 1 Remove ash-tray from instrument panel slide.
- 2 Press the spacer rings supplied over the control bush lock nuts then fit dial pointer to carriage arm.
- 3 Fit dial readings to chrome escutcheon. MANUAL RECEIVER ONLY. To push button opening fit filler bar then securely fasten with speednuts.
- 4 Place receiver in housing assy. so that the control spindles protrude through holes in front also the thread forms on side of receiver are to locate with the side brackets of housing.
- 5 Place escutcheon on to front then fasten securely with chrome washers and barrel nuts. Fit manual control knobs.
- 6 Fasten receiver to side brackets with flat washers and  $\frac{3}{8}$ " x No.8 bdr. hd. screws.
- 7 Slide dust shield on top of receiver can forward so that front edge of shield locates against front panel of assy.
- 8 Place the straddle bracket on top of the original ash-tray slide. Inside of fold is to be against front edge of slide and small fold of bracket is to point downward.
- 9 Centralize bracket across slide then mark position of mount holes on to slide.
- 10 Withdraw bracket and drill two  $\frac{7}{32}$ " dia. holes in slide.
- 11 Reposition bracket and fasten securely with  $\frac{5}{8}$ " x  $\frac{3}{16}$ " Whit.rd.hd. screws, shakeproof washers and  $\frac{3}{16}$ " Whit. nuts.
- 12 Raise front of assembly to straddle bracket also locate mount feet into channel rail of panel. Fasten securely with  $\frac{5}{8}$ " x  $\frac{3}{16}$ " Whit.rd.hd. screws, shakeproof washers and  $\frac{3}{16}$ " Whit. nuts.
- 13 Check alignment with panel then drill  $\frac{7}{32}$ " dia. holes in rail corresponding to holes in mount feet of assy. Fasten assy. securely to panel rail with  $\frac{5}{8}$ " x  $\frac{3}{16}$ " Whit.rd.hd. screws, shakeproof washers and nuts.
- 14 Insert fuse supplied into fuse holder, connect to fuse cover on end of lead from receiver. Connect free end of lead to battery side of ignition switch.
- 15 Insert plug on aerial lead-in cable into socket on rear passenger side of receiver.
- 16 From the ash-tray remove the metal tongue which forms the stop and cigarette stubber. Refit the tongue to the mount position near the rear of tray provided beneath receiver.

THE SPEAKER: 7"x5" assembled to a baffle plate is to be mounted to the underside of the instrument panel and the top of the parcel shelf adjacent to the passenger side of steering column.

- 1 Place assembly on to parcel shelf and remove the screw from underside of panel corresponding with slot in speaker baffle.
- 2 With baffle as close as possible to steering column mark position of the hole in baffle speednut on to the parcel shelf also loosely refit screw through slot into panel.
- 3 Drill a  $\frac{9}{64}$ " hole in shelf at the marked position.
- 4 Fasten baffle to shelf with a flat washer and a  $\frac{3}{4}$ " x No.6 bdr.hd. screw. Insert into speednut and securely tighten.
- 5 Securely tighten screw fastening top of baffle to rail.
- 6 Insert plug on end of lead into socket adjacent to battery lead entry.

INTERFERENCE ELIMINATION: No distributor or spark plug suppressors are required.

NOTE: The contracting surfaces of the nuts and mount positions for the by-pass capacitors must be entirely free of paint or grease to ensure a good electrical contact. Lightly smear cleaned surfaces with lanoline.

GENERATOR: .5uF Capacitor P/No. 4009-024-19 (large claw type clip) Remove shroud from generator armature terminal connector and slide clip on end of capacitor lead on to connector. Refit shroud. Loosen one of mount bolts of generator, slide mount foot under head of bolt and securely tighten.

IGNITION COIL: .5uF Capacitor P/No. 4009-024-25 (small claw type clip) Connect clip on end of lead to battery terminal of ignition coil. NOTE: If necessary use double adaptor terminal supplied.

Loosen one of the mount screws of coil; slide capacitor mount foot under head of screw and securely tighten.

Reconnect leads to car battery.

AERIAL TRIMMER ADJUSTMENT Raise aerial to half extended height. NOTE: If a fully retractable aerial is fitted raise the large diameter outer tube until it is against stop in aerial base. Tune receiver to a weak station near 1000 Kc/s (approximately centre of dial), adjust trimmer for maximum volume of signal.

# HILLMAN MINX DELUXE SERIES VI

## AND

# HILLMAN GAZELLE SERIES VI

## MODELS PD-C - - and MD-C - - "J" SERIES RECEIVERS

### COMPONENT PARTS LIST

4077-212-51 Aerial Lead-in Cable (1) 48" overall  
7120-029-02 Grommet (1) Lead-in Cable

### SPEAKFR AND MOUNTING ACCESSORIES

7296-065-03 Speaker and Baffle Assy. (1)  
includes:-  
4056-012-11 Speaker (1) 7"x 5" permag type C7L36/46/15  
7009-130-03 Baffle (1)  
7104-030-03 Grille (1)  
7152-661-01 Speednut (4) No. 6 flat type  
7201-627-12 Screw (4) 5/8"x No. 6 oval csk. hd.  
7152-752-01 Speednut (1) No. 6 captive  
1171-023-08 Lead - 24" required  
7171-015-01 Plug (1) on end of lead  
7244-034-01 Terminal (2) on end of lead  
7201-577-25 Screw (1)  $\frac{3}{4}$ "x No. 6 bdr. hd.  
7261-201-07 Washer (1) flat steel  $\frac{3}{8}$ "x 13/64"

### RECEIVER MOUNTING ACCESSORIES

7055-425-02 Spacer Ring (2) 5/16" control bush lock nuts  
7173-042-04 Dial Pointer (1)  
7084-147-81 Escutcheon (1)  
includes:-  
7081-001-01 "Diamond Dot" emblem  
7008-123-13 "HILLMAN" metcal  
Housing Assy. (1)  
7261-484-02 Chrome Washer (2)  
7150-854-20 Barrel Nut (2)  
7124-425-01 Knob (2) antiference and tone, rear  
7124-424-11 Knob (2) volume and tuning, front  
7201-079-08 Screw (2)  $\frac{3}{8}$ "x No. 8 bdr. hd.  
7261-201-07 Washer (2) flat steel,  $\frac{3}{8}$ "x 13/64"  
7027-568-03 Straddle Bracket (1)  
7262-512-01 Washer (6) shakeproof, 3/16" ext.  
7198-178-22 Screw (6) 5/8"x 3/16" Whit. rd. hd.  
7148-304-11 Nut (6) 3/16" Whit.  
4071-010-01 Fuse (1) 3 Amp.  
7113-001-01 Fuse Holder Body (1)  
1169-051-08 Battery Lead - 18" required  
7138-023-01 Terminal (1) on end of lead  
7220-002-01 Shroud (1) terminal

### INTERFERENCE ELIMINATION ACCESSORIES

4009-024-19 .5uF capacitor, generator by-pass  
4009-024-25 .5uF capacitor, ignition coil by-pass  
7138-030-01 Double Adaptor

### COMPONENTS SUPPLIED WITH RECEIVER

7065-011-01 Fuse Holder Cap  
7070-115-11 Dial Reading (1)  
7119-046-01 Filler Bar (1) Push Button opening  
7152-272-01 Speednut (2) filler bar fastening