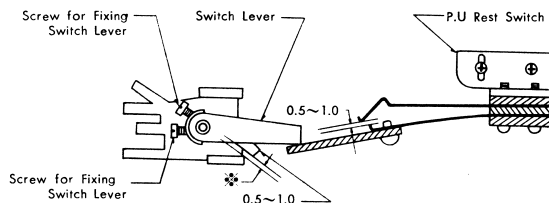


TROUBLE SHOOTING GUIDE OF AMPLIFIER

Before checking the make sure of the following without fail.

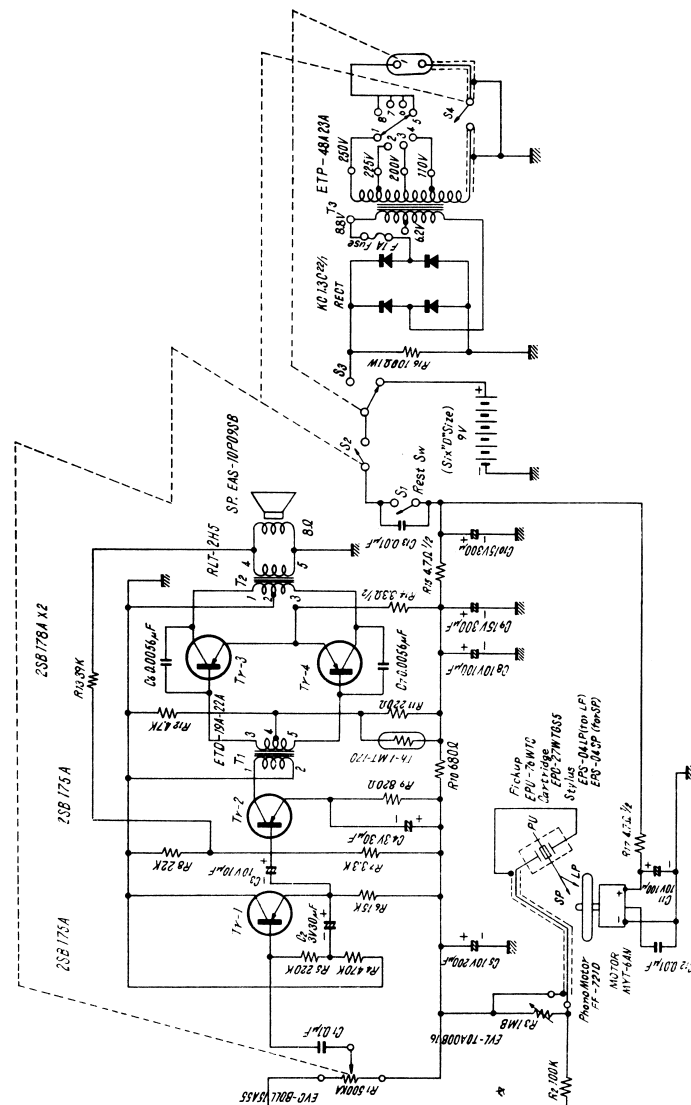
1. In case of testing with battery power source:
 - (a) If the voltage is less than 6.5 V when the set is in operation, replace the battery with a new one and make sure of the proper voltage.
 2. In case of testing with AC power source:
 - (a) As AC voltage differs by regional differences, make sure of the voltage presently used.
 - (b) Remove the turntable and make sure that the presently used voltage accords with the line voltage indicated at present.
 - (c) If the presently used voltage does not conform to voltage indication, loosen the ⊕ mark, pull out the indicator knob and adjust the indicator knob to the used voltage.
- Neglect of checking from (a) to (c) may cause unexpected troubles such as breakage of fuse, etc.

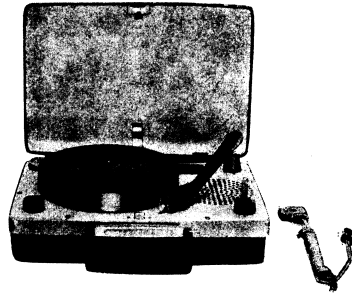
ADJUSTMENT OF MAIN POINT



Put the pickup on the pickup-rest.

- * Put the pickup switch lever to the switch insulation plate, keeping an interval of 0.5-1 mm at the * part, between both switch armatures. And then tighten the screws.
- * Tighten screws with an interval of 1~2 mm at the * part, between the pickup swivel stopper and the turning stopper plate.





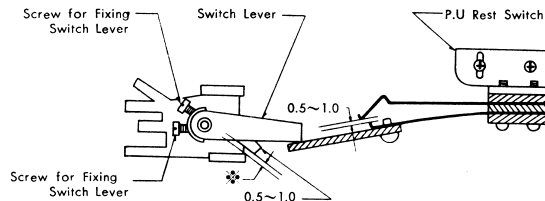
TROUBLE SHOOTING GUIDE OF AMPLIFIER

Before checking the make sure of the following without fail.

1. In case of testing with battery power source:
 - (a) If the voltage is less than 6.5 V when the set is in operation, replace the battery with a new one and make sure of the proper voltage.
2. In case of testing with AC power source:
 - (a) As AC voltage differs by regional differences, make sure of the voltage presently used.
 - (b) Remove the turntable and make sure that the presently used voltage accords with the line voltage indicated at present.
 - (c) If the presently used voltage does not conform to voltage indication, loosen the \oplus mark, pull out the indicator knob and adjust the indicator knob to the used voltage.

Neglect of checking from (a) to (c) may cause unexpected troubles such as breakage of fuse, etc.

ADJUSTMENT OF MAIN POINT



Put the pickup on the pickup-rest.

- * Put the pickup switch lever to the switch insulation plate, keeping an interval of 0.5-1 mm at the * part, between both switch armatures. And then tighten the screws.
- * Tighten screws with an interval of 1~2 mm at the * part, between the pickup swivel stopper and the turning stopper plate.

