

*Emmco*



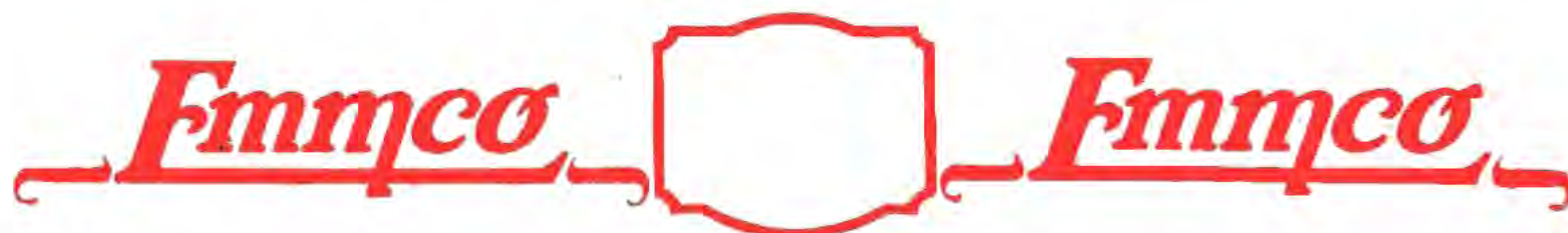
**EMMCO**  
**Troubadour**  
Screen Grid  
**RADIO**

*Let  
Sunshine  
Flood your  
Home*

The  
Troubadour  
Way







## THE "TROUBADOUR"

### MANTEL RECEIVERS

#### ALL ELECTRIC

Three Models available in handsome two-tone walnut compact. "Mantel" Cabinet easily moved from room to room. Each embraces the special Troubadour Features—Screen Grid Radio—Single Dial Control—Volume Control—Tone Control—and All Nickel Finish Chassis, the emblem of quality.

#### TWO VALVE MODEL (and Rectifier)

The ideal small local Station Receiver, giving all Stations clearly and with excellent volume and exquisite tone. Employs Screen Grid Detector and Power Pentode Output and with Dynamic Speaker matched in the Valves. High grade construction throughout, no built down to a price. Dependable and fully guaranteed.

#### THREE VALVE MODEL (and Rectifier)

The De Luxe local station receiver with just that ability to bring in Interstate Stations that please. Double tuning and double Screen Grid giving selectivity and sensitivity with a Super Power Valve handling the attainable volume with clarity and wonderful tone. Dynamic Speaker, of course, included. Built like a rock and sensitive as a violin.



#### FOUR VALVE (and Rectifier) VARIABLE MU MODEL

The Latest Radio Achievement

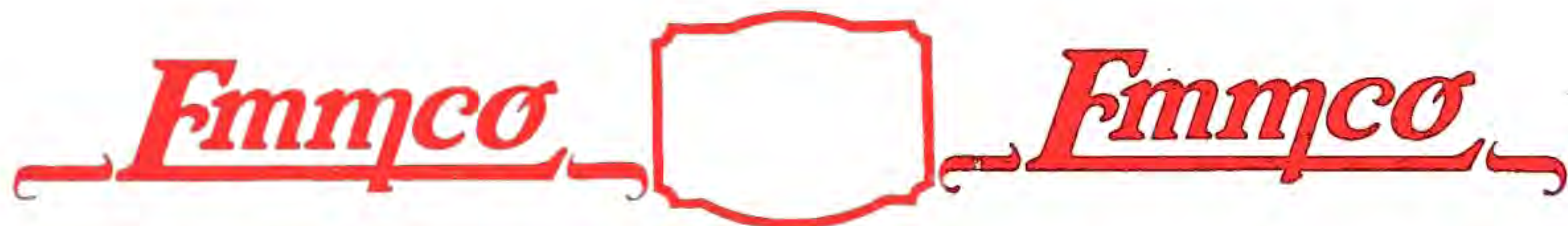
Electricity Meter Mfg. Co. Ltd. always in the very forefront of Radio developments are the first in the Australian Market with a Receiver embodying the use of the Variable Mu. Screen Grid Radio Valves, Screen Grid Detector and high Voltage Pentode Output. The whole chassis is of distinct and radically new design, now exclusive to Emmco, but so fundamentally good that others must eventually copy. Totally novel improvements are:—New air cooled Power Pack—Completely insulated and rubber sprung gang condenser—Safety Electric Power Socket connection—Combined Pick-up Switch and Volume Control—Dynamic Speaker Plug Connection for all leads. The variable Mu. Valves allow of high sensitivity for Interstate reception without distortion of local Stations due to overloaded detector, and only has to be heard to be appreciated. The Interstate Receiver "De Novo and De Luxe."

### CONSOLETTES RECEIVERS

Each of the Models above are also available in Console Cabinet of moderate dimensions modelled on the design of the full Console Cabinets illustrated on opposite page and equally beautiful.







# THE "TROUBADOUR" CONSOLE RECEIVERS

## ALL ELECTRIC

Specially designed for full Interstate reception with the desirable degree of selectivity. The Radio Models are fitted for Gramo Pick-up. The "Fernleigh" design full Console, housing these models, is a most handsome veneered walnut and hand carved, massive and splendidly constructed Cabinet. Admired by all.

## FIVE VALVE MODEL (and Rectifier)

Utilizes three Screen Grid Valves in latest system of Radio Amplification, having four tuned stages, with one super Power Valve output stage. Single dial control—separate Power Pack, most solidly constructed and fully shielded. Full size concert model Dynamic Speaker is fitted giving perfect tone and fidelity.

## SEVEN VALVE MODEL (and Rectifier)

The ultra in Radio Receivers, including three Screen Grid Radio, tuned detector, audio and push-pull power output stages, fully shielded and massively built with separate power pack, and of course, single dial control. Volume controls on Radio and audio, also special tone control. Full size concert Dynamic Speaker. The finest quality receiver in Australia.



## RADIO - GRAMO COMBINATIONS

Four ~ Five and Seven Valve Models

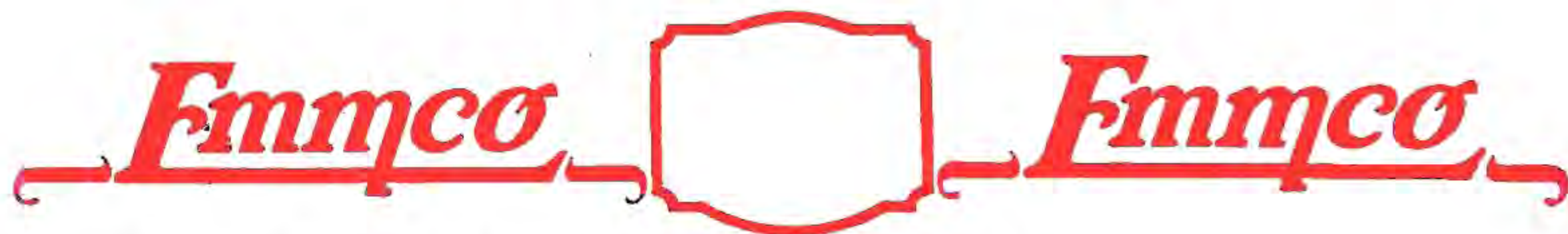
All the multi-valve Troubadour Electric Receivers are ideally suitable for high class reproduction of recorded music, with their superbly designed and balanced audio stages, giving true pitched and likelike tone. Each of the Models are available in combinations in the beautiful "Fernleigh" Consoles, the equipment including Paillard Induction Disc Electric Motors and Paillard or B.T.H. Electric Pick-ups. Perfect control of Radio and Gramo is a feature. These models have only to be heard to be appreciated.

## EXCLUSIVE CABINETS

Troubadour Receivers, all models, are also available in many exclusive Cabinets, additional to those illustrated. Chassis only can also be supplied for conversion of existing sets and gramophones.







## THE "TROUBADOUR" CONSOLE BATTERY SIX



### THE PERFECT COUNTRY SET

The most modern type of Battery Receiver employing three screen grid radio, detector and two audio stages, built entirely on and into a heavy steel chassis with four gang tuning condenser, similar to Electric Sets and correct modern practice. The circuit worked out by Emmco Engineers for very high amplification giving wonderful night and daylight results, yet without complicated tuning, and on especially low battery consumption which is essential for country use. Specially selected and matched built in cone speaker gives beautiful tone quality. The handsome walnut veneer cabinet houses the Batteries as well, no external unsightly wiring.

Where desired the Troubadour Battery Six can also be supplied in a beautiful Table Cabinet having room for H.T. Batteries and with separate Cone Speaker.

Radio-Gramo Combination Model in "Fernleigh" Cabinet having Paillard Double Spring Gramo Motor, Paillard or B.T.H. Pick-up is also available. Electric Mains operated models for D.C. Towns are specially constructed to order.



The very air is charged full of "Radio" for those who are wise enough to take their share, and the Troubadour in your home will flood it with happiness.

"Radio" to-day represents sunshine in the wisely run home. By its wonders the lives of splendid mothers have been lifted from monotony to pleasure, from isolation and loneliness to close association with the doings of the world.

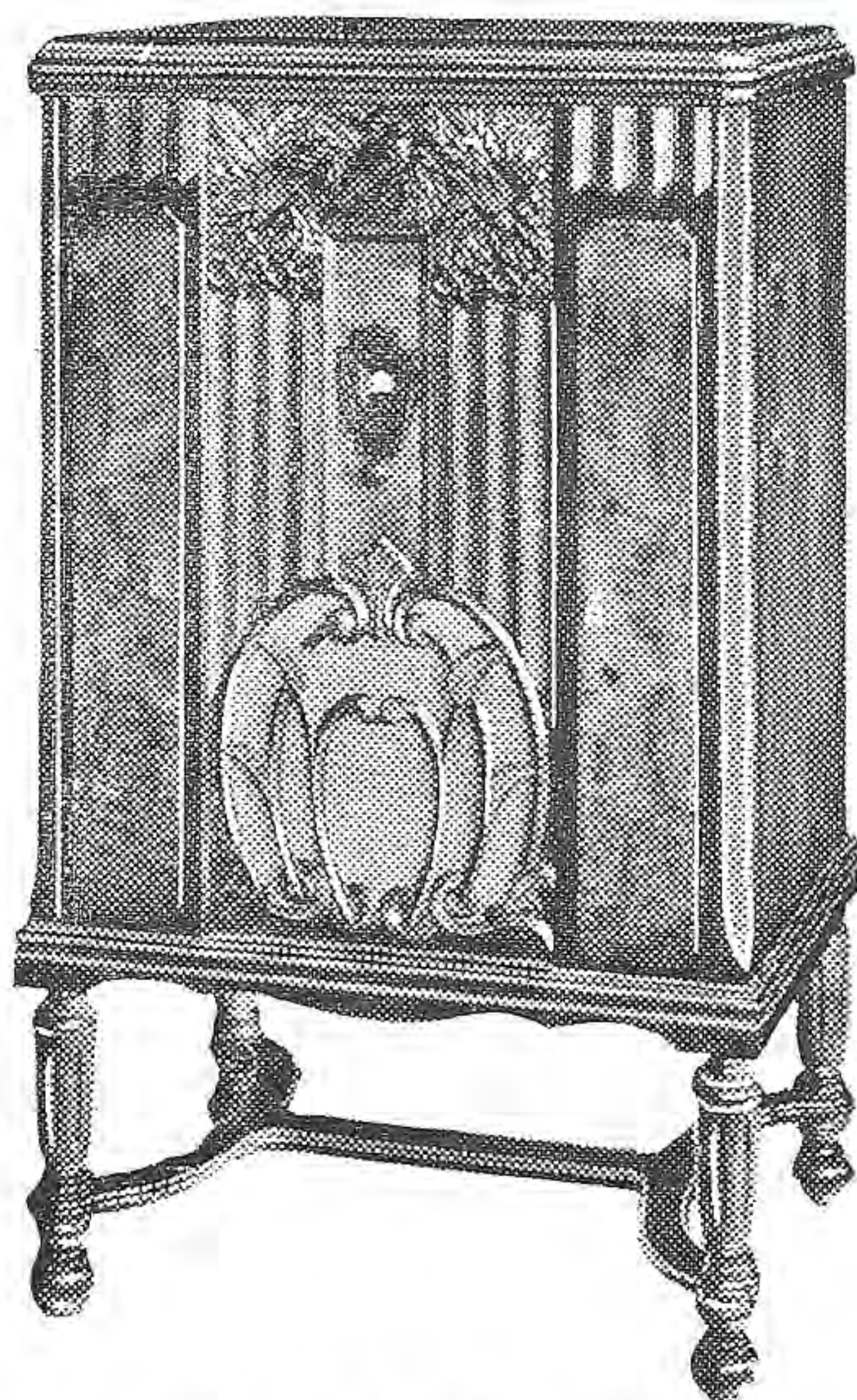
"Radio" to-day means joys for the children, and joys which, at the same time, mean guidance and education. "Radio" to-day brings music, entertainment, amusement, and education into the home with the least effort and at a trifling cost. The home without music is poor indeed.

No home should be without such equipment as will permit of receiving the pick of all Radio programmes with absolute surety and in the simplest way possible—the Troubadour way.

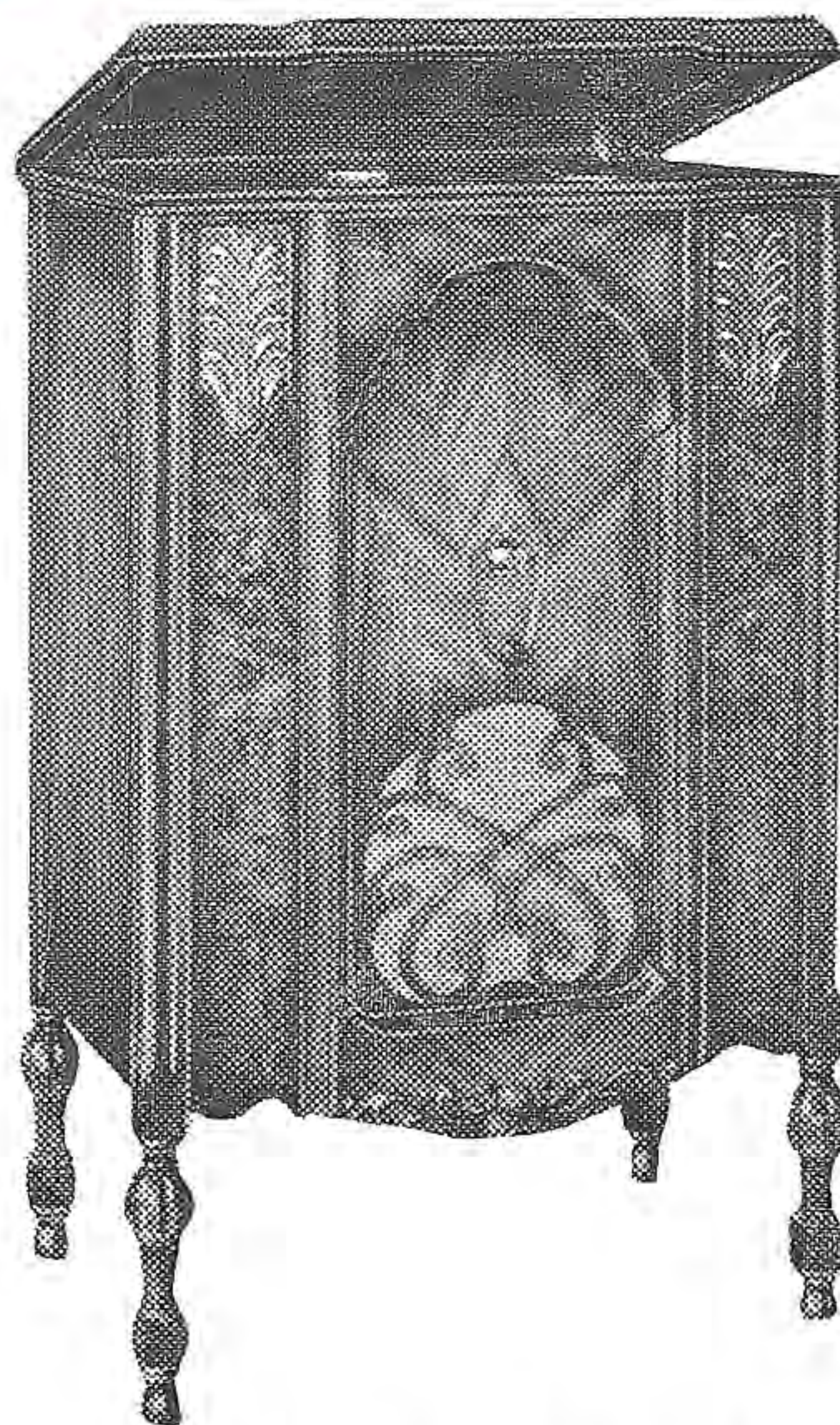




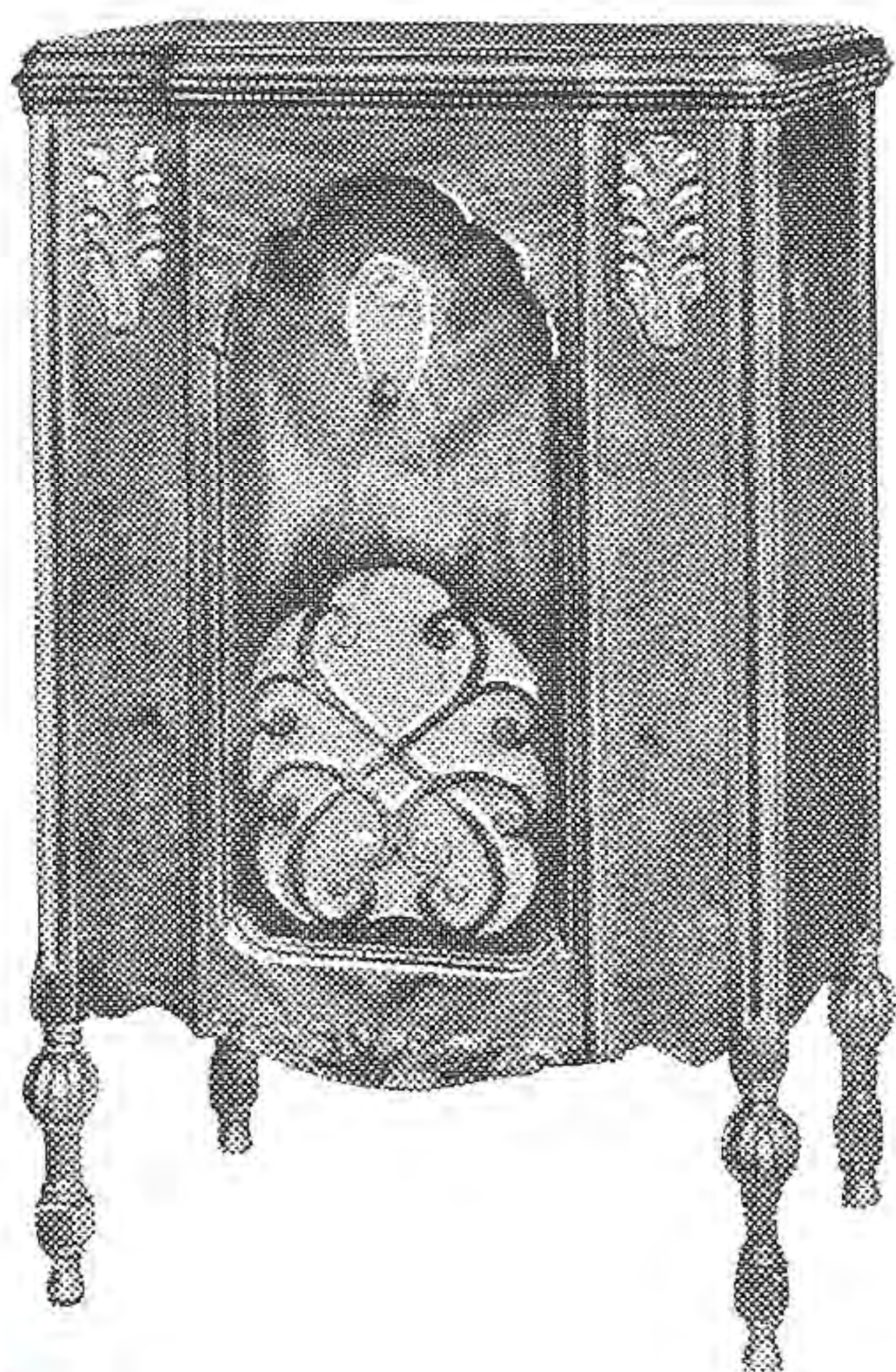
*Emmco*



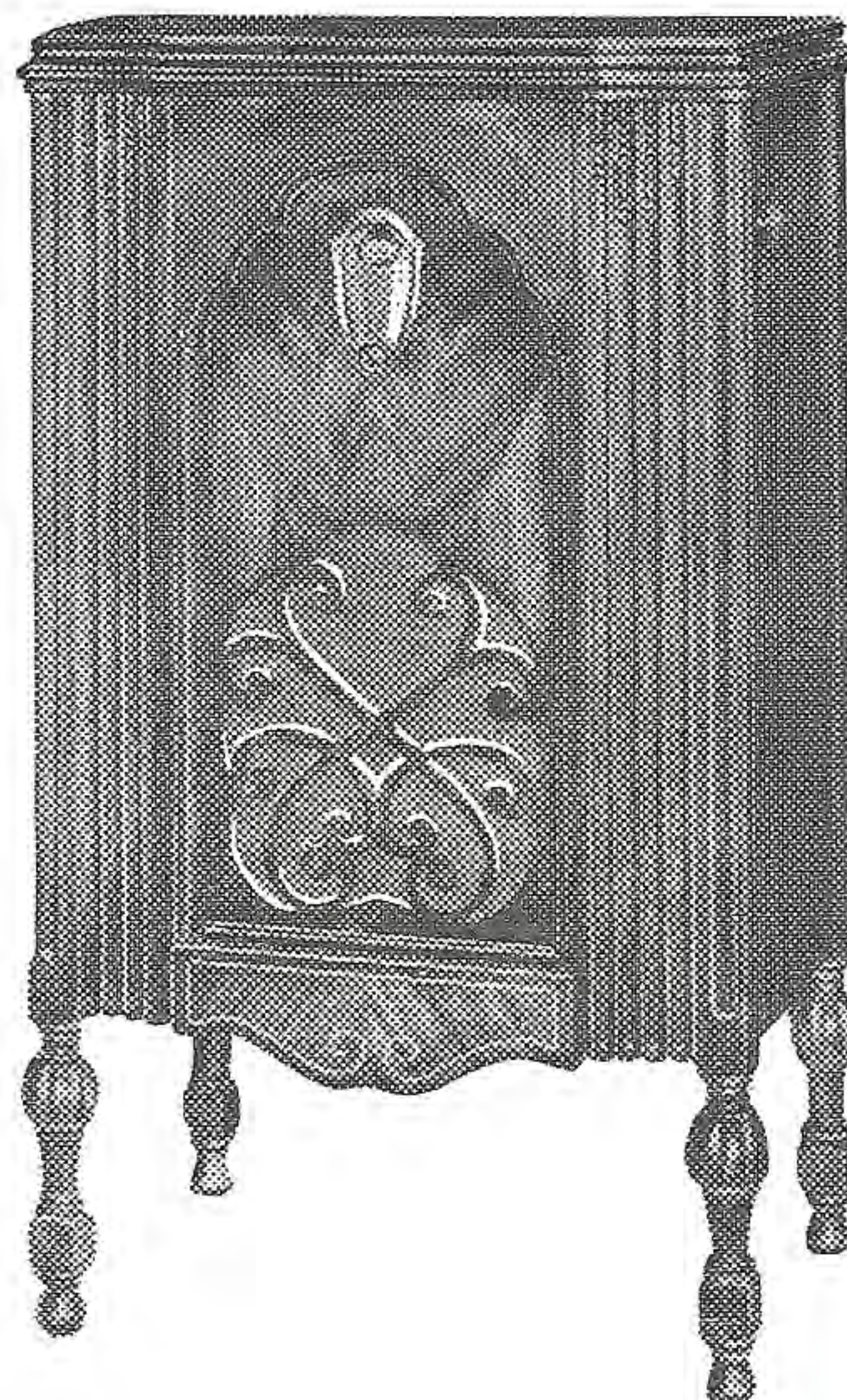
AC7 Combination Radio and Gramophone.



AC5 Combination Radio and Gramophone.

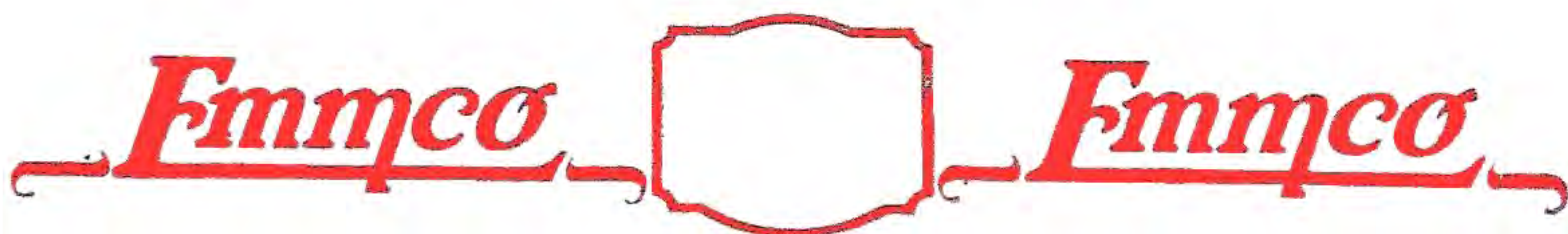


AC5 Console.



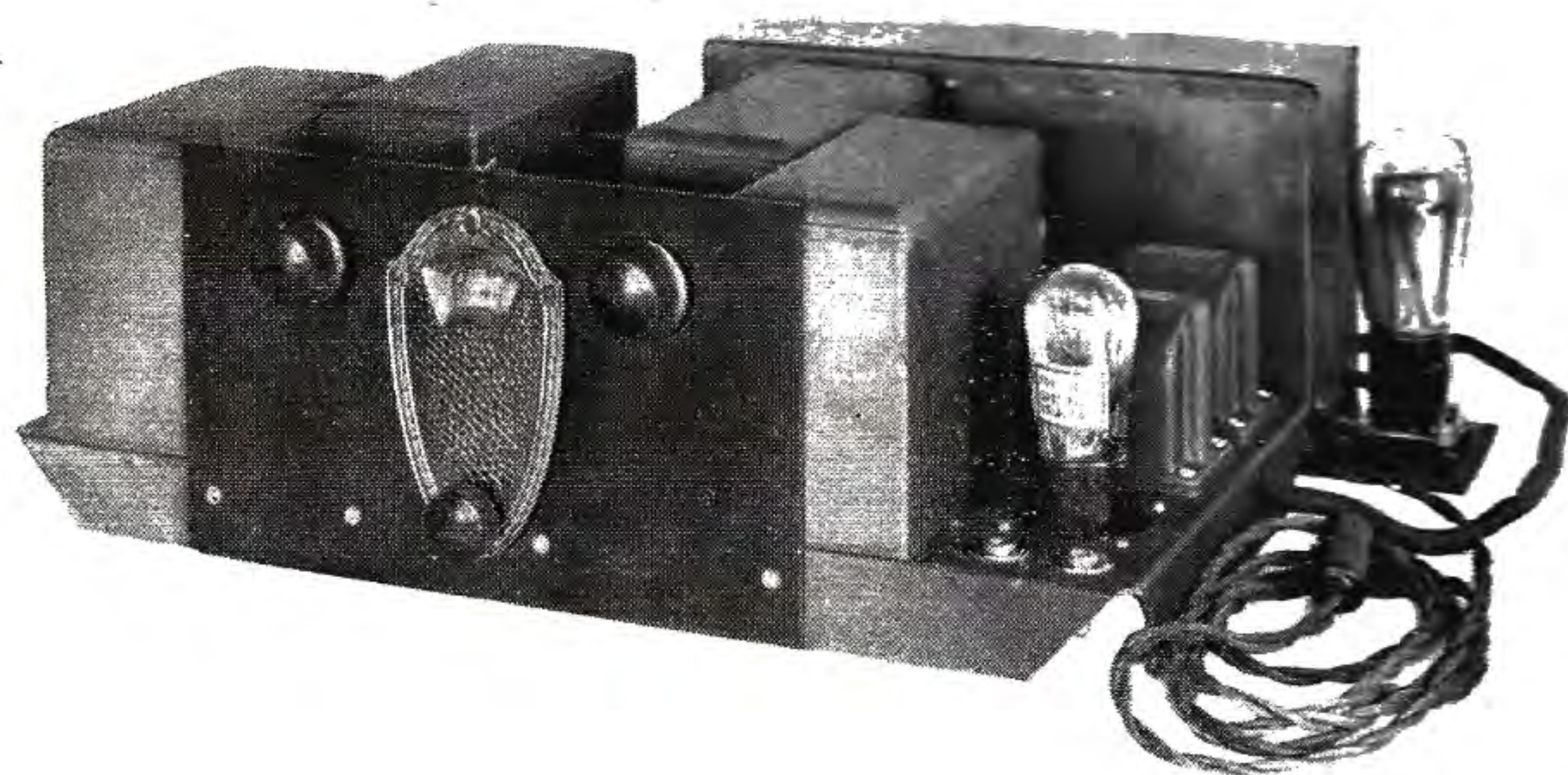
AC3 Console.





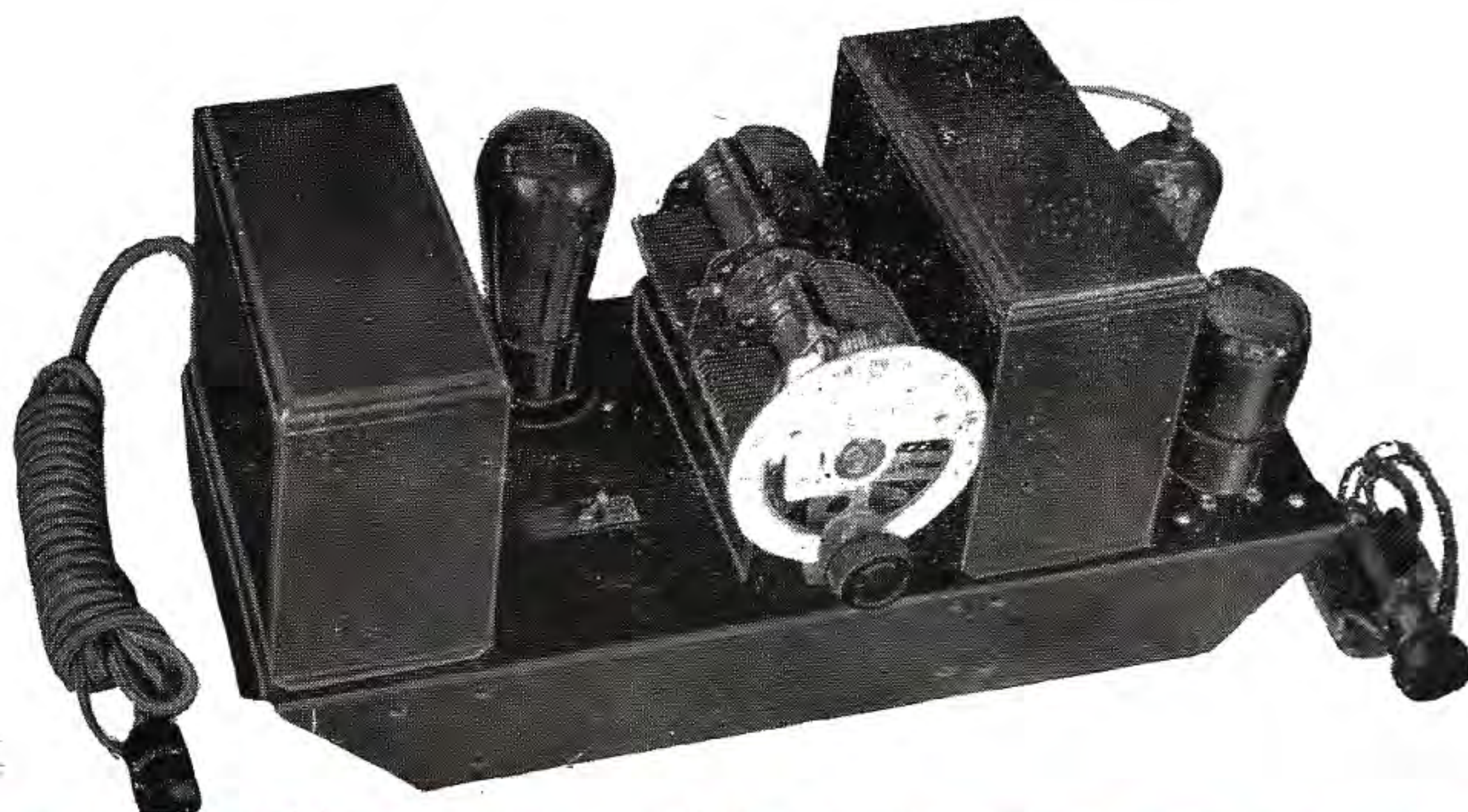
### AC7 Chassis

Includes three Stages Screen Grid Radio, Power Detector and two 245 Valves in Push Pull. Separate Power Pack, fully Shielded, One Dial Control. The finest quality Receiver in Australia.



### AC5 Chassis

Includes three Stages Screen Grid Radio, Power Detector and 245 Output Valve. Separate Power Pack. Provision for Gramophone Pick Up. One Dial Control. Perfect Interstate Reception.

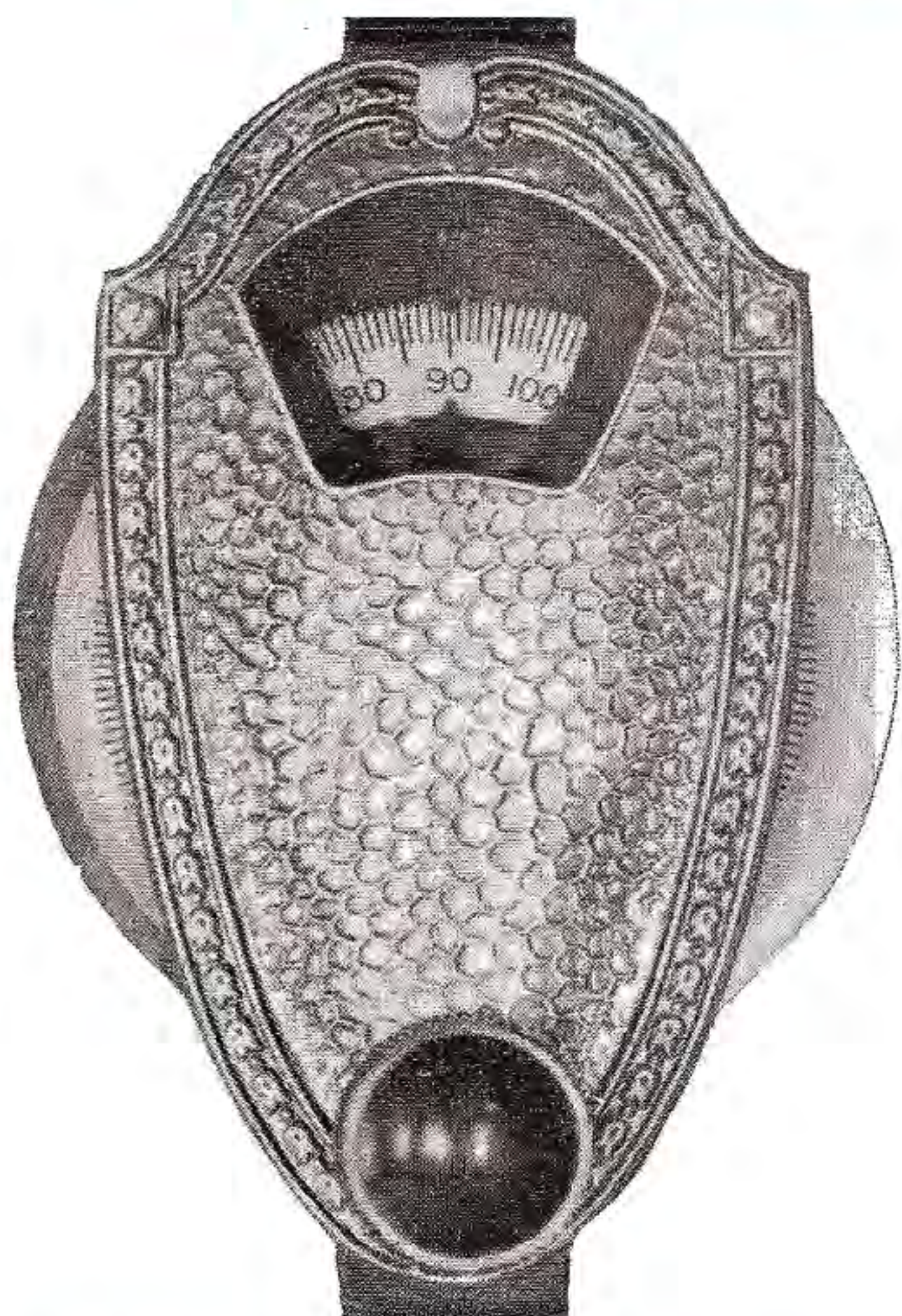


### AC3 Chassis

Includes Screen Grid Radio, Screen Grid Detector and Power Output. Sensitivity, Selectivity and Tone unequalled. Absolutely the best Three Valve Chassis procurable.







## EMMCO VERNIER DIALS

The fine adjustment facilitates tuning operations. It is adaptable for either clockwise or anti-clockwise movement, and there is absolutely no back lash.

Price, mounting template supplied . . . . . 10/-  
Price, illuminated . . . . . 137/-

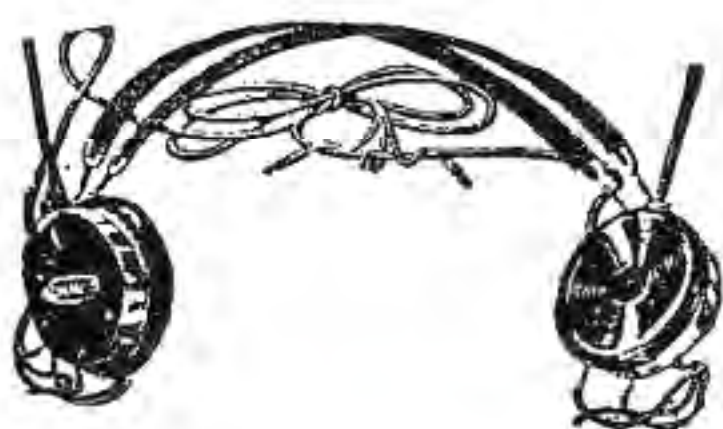


## Drum Control Dial

Very Smooth Action.

22/6

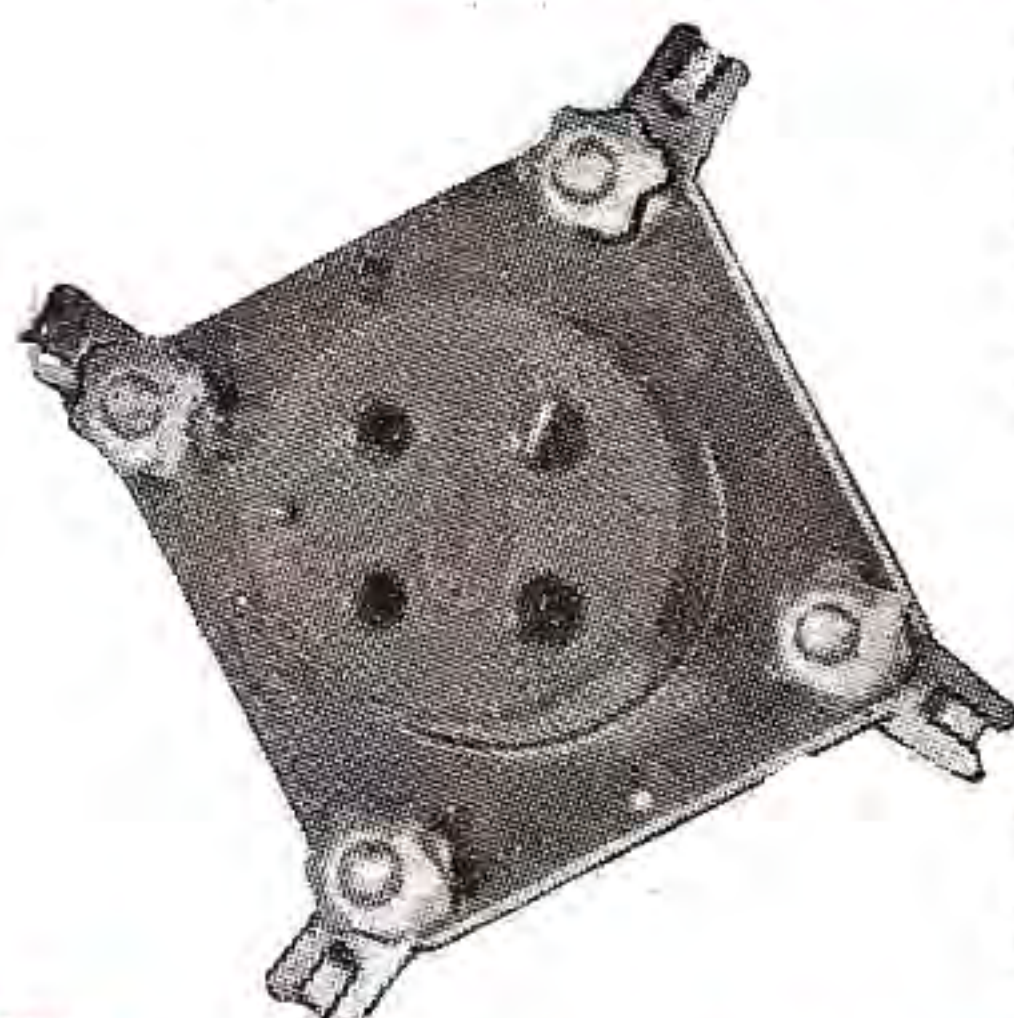
## EMMCO HEADPHONES



Every detail in the Emmco headphones is manufactured to the highest standard of efficiency. A light spring head band, with sliding adjustment, on each ear-piece, enables them to be worn with utmost comfort.

One year's guarantee.  
Price . . . . . 22/-

## BALANCED SOCKETS



A perfect push type balanced valve socket. The valve pins fit easily into the socket, and are gripped tightly, thus ensuring positive contact. The natural microphonic noises are entirely eliminated.

Prices: Balanced Socket,  
Type 524 . . . . . 3/3  
Sub-Panel Socket, Type  
525 . . . . . 2/3

### MANUFACTURERS' TYPE SUB-PANEL SOCKETS.

Bakelite square, ready for mounting on sub-panel.  
Price—5 prong type . . . 1/9  
4 prong type . . . 1/9



## PEP-PUNCH TRANSFORMER

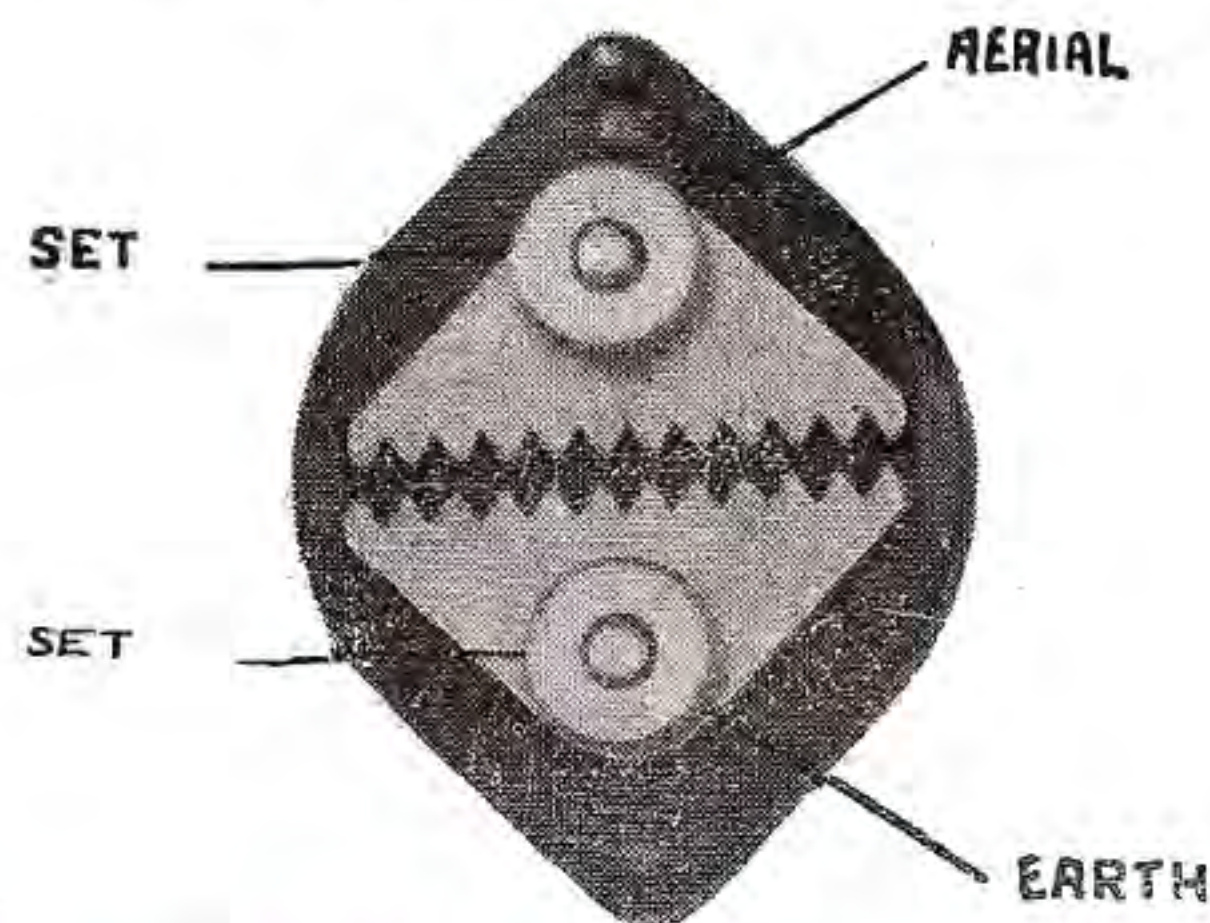
The little transformer with the big results, volume and smoothness. A single hard drawn case, thoroughly impregnated. The best medium-priced transformer ever made. Try one and see. Ratios 5-1, 3½-1. Economically priced . . . . . 11/-



## EMMCO TRANSFORMER

### PURATONE.

A New Type of Audio Transformer of moderate price to give the maximum amount of amplification with the minimum of distortion. Price . . . . . 16/6



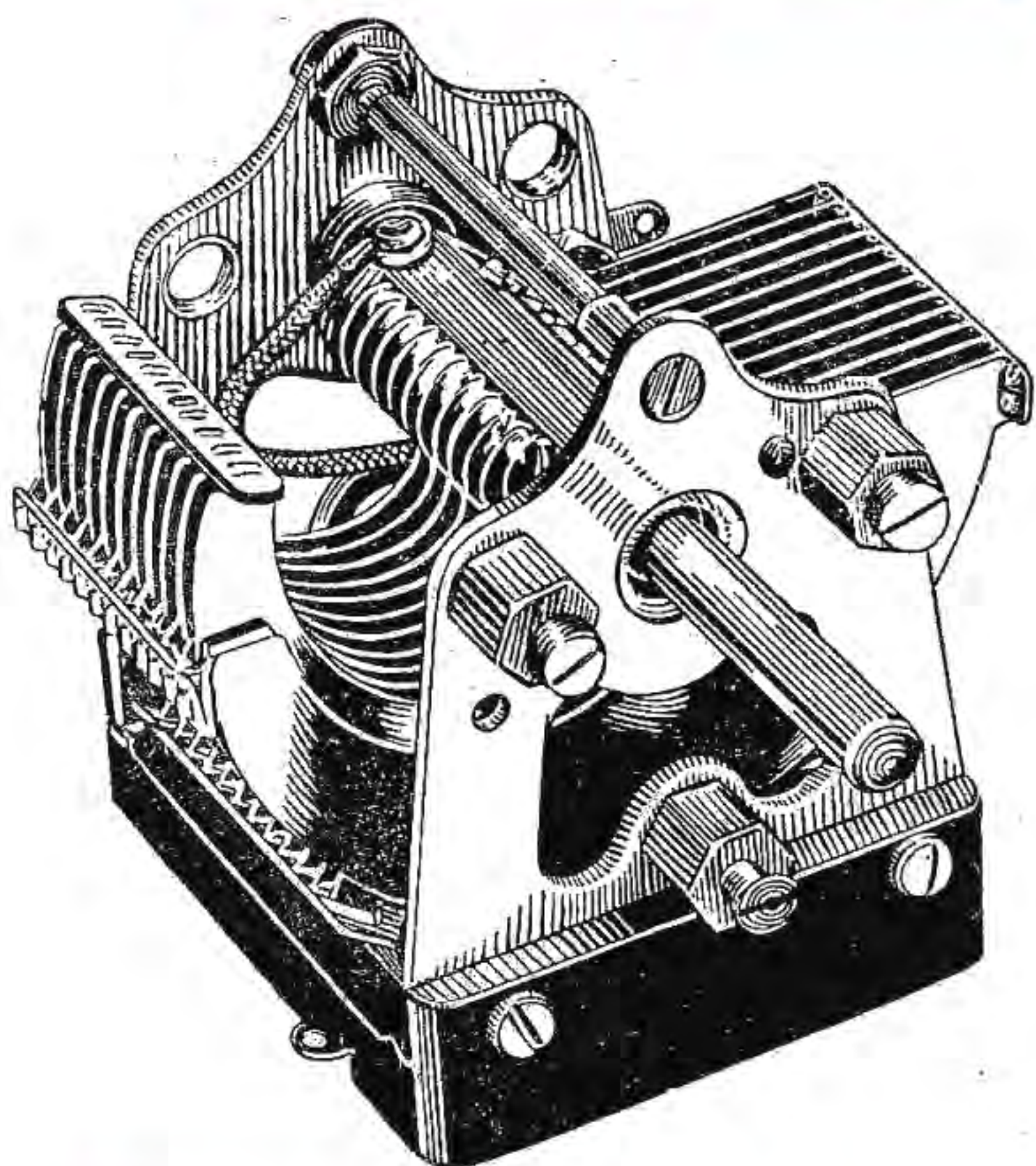
## EMMCO LIGHTNING ARRESTOR

A Lightning Arrestor is a positive necessity required by law, and is for the adequate protection of any radio receiver. The Emmco Lightning Arrestor is mounted on a bakelite base, and the gap principle prevents static corrosion.

Price, including insurance for £25 . . . . . 2/9



# Emmco



## Emmco Condensers

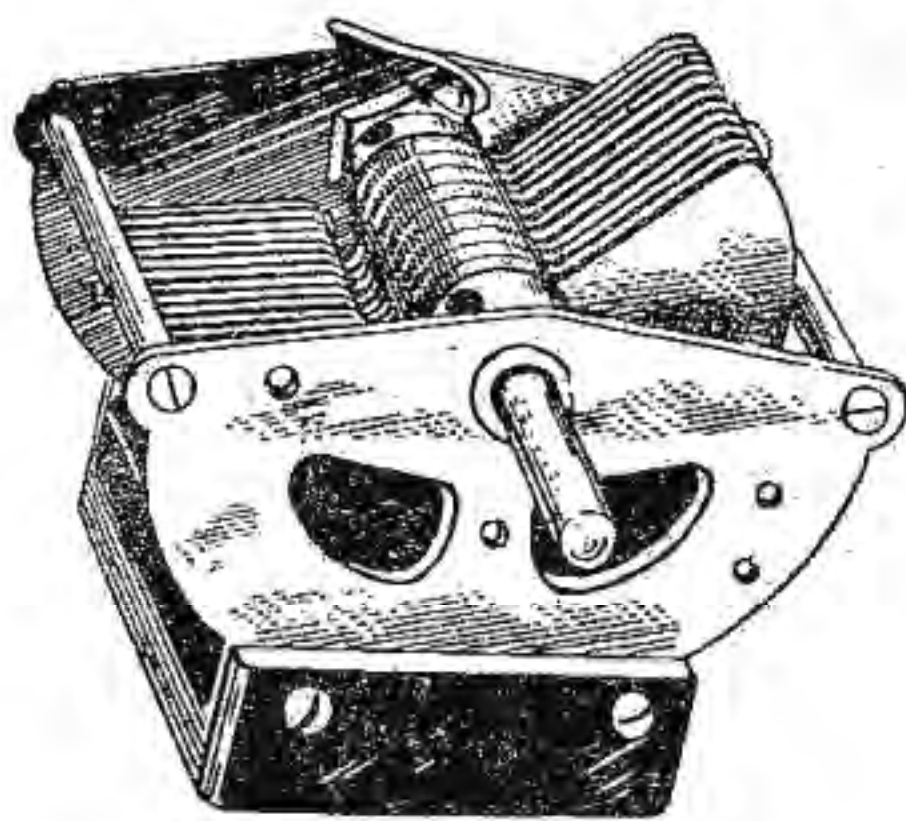
### SUPER-STRATELYNE CONDENSER.

This condenser embraces correct minimum and maximum capacities, perfect insulation, true alignment, and cut-away brass plates in both stator and rotor. Pig-tailed connection, adaptable for either base or panel mounting, adjustable cone bearings. It has also hollow  $\frac{1}{4}$  in. shaft, interlocking tandem mounting of two or more condensers or the substitution of  $\frac{1}{4}$  in. rod for one dial control sets.

Prices: .0005, 12/6; .00025, and .00035, 12/6.

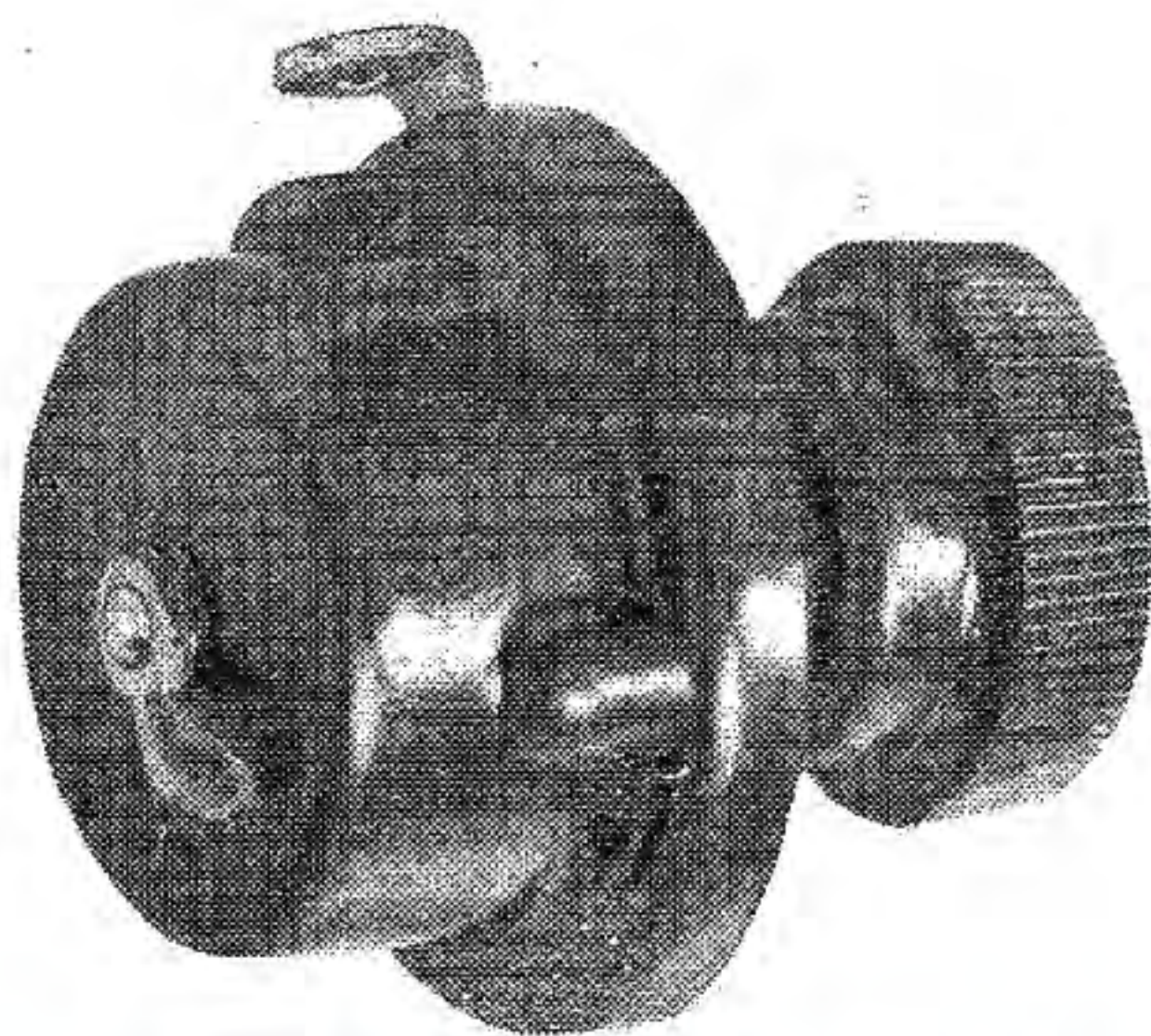
## Manufacturers' Condensers

Adopted by many Australian Set Manufacturers.



Rigidly built to withstand transportation or abuse, of sturdy construction, bakelite base, low minimum, true capacity, removable shaft, pig tails, automatic constant tension, perfectly insulated, and adaptable for either base, panel or gang mounting.

Prices: .0005, .00035 and .00025, 12/6.



**Universal  
Resistance,  
7/6**



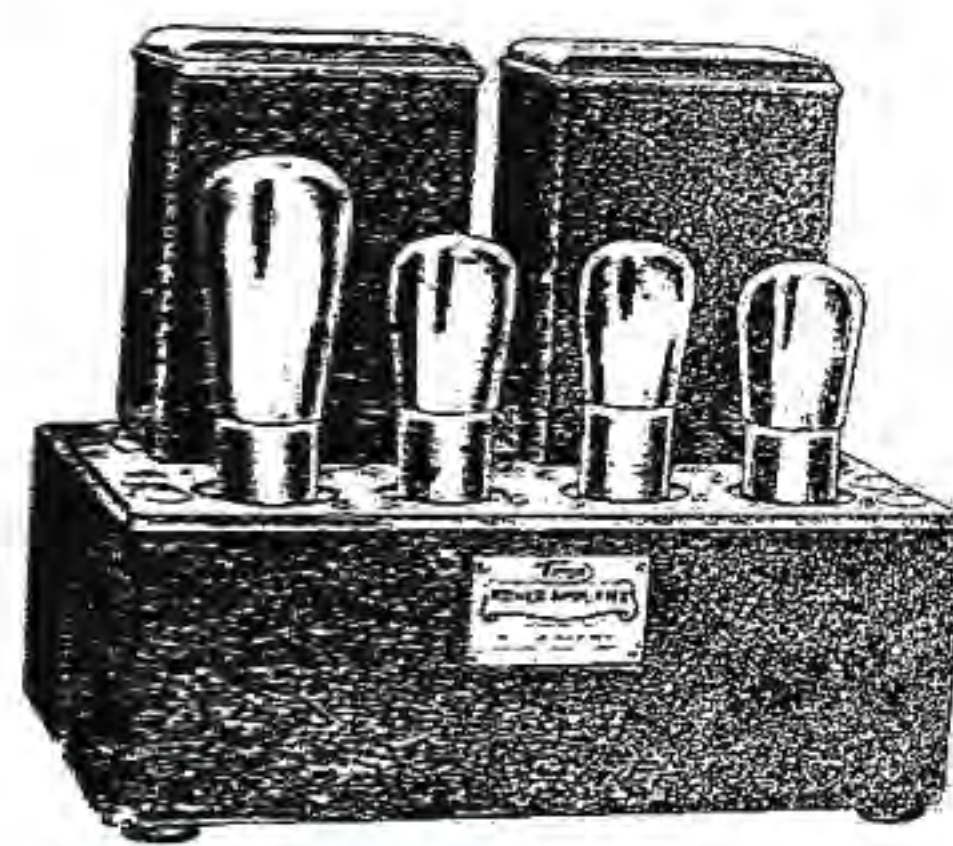
## Emmco Jacks

EMMCO JACKS, nickel plated, silver contact points, separate frame and easily accessible. Terminal soldering lugs, spacing washers are provided for panels from  $\frac{1}{8}$  in. to  $\frac{1}{4}$  in. thick.

Type 500—Open Circuit Jack. Price . . . . . 2/9  
 „ 502—Double Circuit Jack. Price . . . . . 3/3  
 „ 503—Single Filament Jack. Price . . . . . 3/9  
 „ 504—Double Filament Jack. Price . . . . . 4/-

### JACK TIPS.

Jack Tips for connecting 'phones or speakers, nickel plated, one-hole mount, soldering lugs, positive contact. Per pair, 2 6.

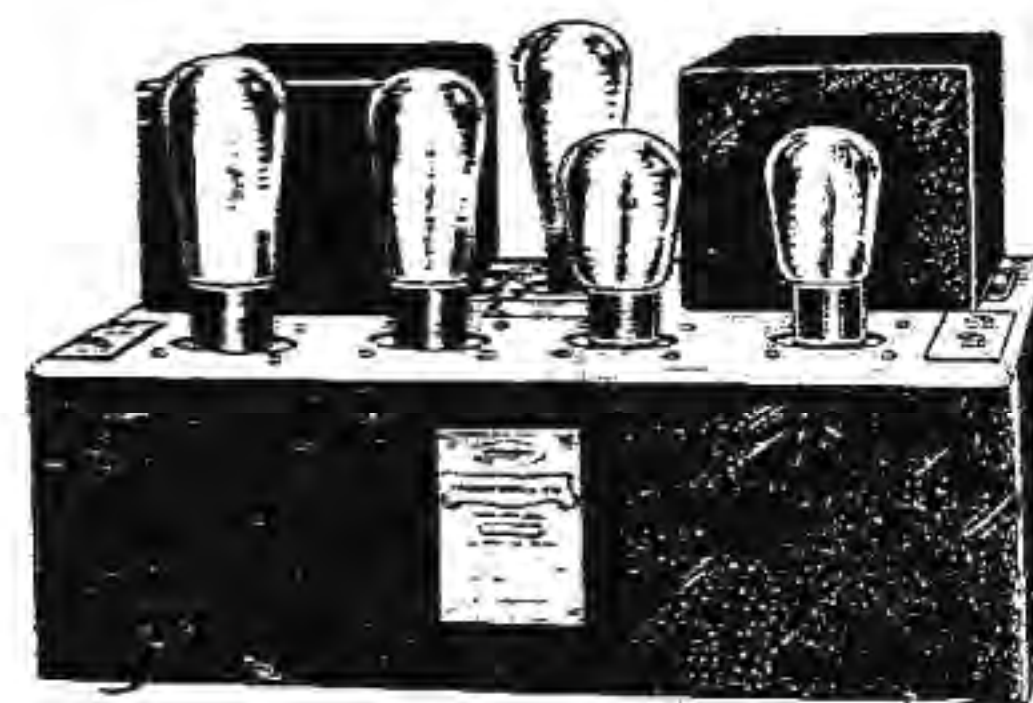


## The P.A. 125 "Home" Amplifier

This amplifier was designed for home use, and will give ample volume for dancing, etc., when used in conjunction with a gramophone and pick up.

It uses one E 424 valve, two 171 A or P 628 A valves in push pull, and one UX 280 rectifier.

Price of P.A. 125, without valves . . . . . £19/8/6



## The P.A. 250 "Concert" Amplifier

This is the standard equipment, suitable for cafes, restaurants, stores, small theatres and dance halls, etc.

Using two E 424 valves, two UX 245 valves in push pull and one UX 280 rectifier, it will give an undistorted output of five watts.

Price of P.A. 250, without valves . . . . . £31/15/-

MADE IN AUSTRALIA BY

**Electricity Meter Mfg. Co. Ltd.**

JOYNTON AVENUE, WATERLOO.



# Edgar W. Hudson Ltd.

## 1931 Catalogue

~~Price List (August 15th)~~

Reduced Price List (October 10th) [S]

# Emmco Troubadour Receivers

### ELECTRIC MODELS.

TWO VALVE ELECTRIC TYPE A.C.2 (Screen Grid Pentone) with Dynamic Speaker in Troubadour Mantel Cabinet. (£20/5/6 plus sales tax, £1/4/6) .. .. .	£15 0 0 <del>£22K 10X 10</del>
TWO VALVE ELECTRIC TYPE A.C.2 (Screen Grid Pentone) with Dynamic Speaker in Console Cabinet. (£23/11/9 plus sales tax, £1/8/3) .. .. .	£18 0 0 <del>£22K 10X 10</del>
THREE VALVE ELECTRIC TYPE A.C.3 (Double Screen Grid) with Dynamic Speaker in Mantel Cabinet. (£23/11/9 plus sales tax, £1/8/3) .. .. .	£18 0 0 <del>£22K 10X 10</del>
THREE VALVE ELECTRIC TYPE A.C.3 (Double Screen Grid) with Dynamic Speaker in Console Cabinet. (£26/17/9 plus sales tax, £1/12/3) .. .. .	£19 10 0 <del>£22K 10X 10</del>
THREE VALVE ELECTRIC TYPE A.C.3 (Double Screen Grid) with Dynamic Speaker in Console Cabinet (£28/6/- plus sales tax, £1/14/-) .. .. .	£22 10 0 <del>£25K 10X 10</del>
FOUR VALVE ELECTRIC TYPE A.C.4. (Variable Mu Treble Screen Grid) with Dynamic Speaker in Mantel Cabinet. (£26/8/3 plus sales tax, £1/11/9) .. .. .	£22 0 0 <del>£25K 10X 10</del>
FOUR VALVE ELECTRIC TYPE A.C.4. (Variable Mu Treble Screen Grid) with 10½in. Dynamic in Console Cabinet. (£33/10/- plus sales tax, £2/-/-) .. .. .	£25 0 0 <del>£28K 10X 10</del>
FOUR VALVE ELECTRIC TYPE A.C.4 (Variable Mu Treble Screen Grid) with 10½in. Dynamic in Console Cabinet. (£35/7/6 plus sales tax, £2/2/6) .. .. .	£28 10 0 <del>£31K 10X 10</del>
FIVE VALVE ELECTRIC TYPE A.C.5 (Treble Screen Grid) with 10½in. Dynamic Speaker in Console Cabinet. (£49/1/- plus sales tax, £2/19/-) .. .. .	£37 10 0 <del>£45K 10X 10</del>
SEVEN VALVE ELECTRIC TYPE A.C.7 (Treble Screen Grid and Push-pull) with 10½in Dynamic Speaker in Console Cabinet. (£58/-/6 plus sales tax, £3/9/6) .. .. .	£45 0 0 <del>£56K 10X 10</del>

SALES TAX ADDITIONAL ON ABOVE PRICES.



# Edgar W. Hudson Ltd.

## 1931 Catalogue

~~Price List (August 15th)~~

Reduced Price List (October 10th) [S]

## Emmco Troubadour Receivers

(Continued)

### COMBINATION RADIO-GRAMOS.

FOUR VALVE ELECTRIC TYPE A.C.4 (Variable Mu Treble Screen Grid) Paillard Motor and Pick-up with 10½in. Dynamic Speaker in Linwood Console Cabinet. (£54/5/- plus sales tax, £3/5/-) .. .. .	£37 10 0 <del>55X 10X 0</del>
FOUR VALVE ELECTRIC TYPE A.C.4 (Variable Mu Treble Screen Grid) Paillard Motor and Pick-up with 10½in. Dynamic Speaker in Fernleigh Console Cabinet. (£58/-/6 plus sales tax, £3/9/6) .. .. .	£41 0 0 <del>56X 10X 0</del>
FIVE VALVE ELECTRIC TYPE A.C.5 (Treble Screen Grid) Paillard Motor and Pick-up with 10½in. Dynamic Speaker in Fernleigh Console Cabinet. (£65/11/9 plus sales tax, £3/18/3) .. .. .	£52 10 0 <del>56X 10X 0</del>
SEVEN VALVE ELECTRIC TYPE A.C.7 (Treble Screen Grid and Push-pull) Paillard Motor and Pick-up with 10½in. Dynamic Speaker in Fernleigh Console Cabinet. (£75/-/- plus sales tax, £4/10/-) .. .. .	£62 10 0 <del>57X 10X 0</del>
SEVEN VALVE ELECTRIC TYPE A.C.7 (Treble Screen Grid and Push-pull) Paillard Motor and Pick-up with 10½in. Dynamic Speaker in Songbird Console Cabinet. (£93/17/6 plus sales tax, £5/12/6) .. .. .	£75 0 0 <del>58X 10X 0</del>

### BATTERY MODELS.

SIX VALVE BATTERY OPERATED TYPE B.C.6 (Treble Screen Grid) with Magnetic Cone Speaker in Console Cabinet. (£34/6/- plus sales tax, £2/1/3) .. .. .	<del>58X 10X 0</del>
Equipment: 3-45 V. Super-Service H.T. Batteries, 1-9 V. Bias Battery, 8 Standard "A" Type Sac Cells. (£9/1/9 plus sales tax, 11/-) .. .. .	<del>59X 10X 0</del>
	<del>59X 10X 0</del>
(With 80 Amp-Hour Accumulator deduct £3/-/-)	£36 0 0
SIX VALVE BATTERY OPERATED TYPE B.C.6 (Treble Screen Grid) in Table Cabinet, with Mullard Type "H" Speaker separate. (£32/8/6 plus sales tax, £1/18/9) .. .. .	<del>58X 10X 0</del>
Equipment as above (£9/1/9 plus sales tax, 11/-) .. .. .	<del>59X 10X 0</del>
	<del>59X 10X 0</del>
(For Chassis only price, see under Chasses in Components Section).	£34 0 0

SALES TAX ADDITIONAL ON ABOVE PRICES.