

'diamond-dot'

CAR RADIO DIVISION, ELECTRONIC INDUSTRIES LTD.

ASTOR HOUSE: 161-173 STURT STREET, SOUTH MELBOURNE Phone: 69 0300

DATSUN - 1

File : DATSUN

Date : 25/6/63.

Page : 1.

SERVICE DATA

DATSUN "BLUEBIRD" SALOON AND STATION WAGON

DATSUN 1200 HEAVY DUTY STATION WAGON & PICK-UP TRUCK

DATSUN SERVICE UTILITY AND $\frac{1}{2}$ TON COUPE UTILITY

INSTALLATION INSTRUCTIONS FOR FITTING

NIPAC 12 VOLT CAR RADIO

MODELS PD-C5D & MD-C4D

Complete Installation requires

- Installation Accessory Package: NIPAC Part No. 3900/E
- Aerial - 5 section, telescopic whip, top mount type, NIPAC Part No. 3900/C
- or Aerial - 5 section, telescopic whip, fully retractable type: NIPAC Part No. 3900/D
- Receiver - model PD-C5D, push button: NIPAC Part No. 3900/B
- or Receiver - model MD-C4D, manual: NIPAC Part No. 3900/A

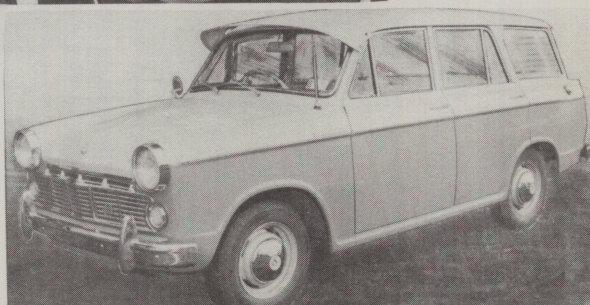
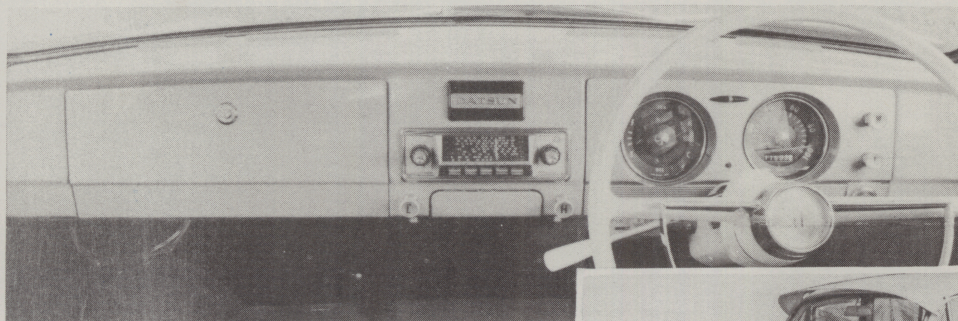
WARNING: BATTERY CONNECTION OF INCORRECT POLARITY WILL DAMAGE THE RECEIVER.
Before commencing installation disconnect leads from car battery and remove cover disc from top of receiver can.
Place polarity plug on to exposed pins so that the "POS" arrow aligns with arrow printed on circuit board.
Refit cover disc.

NOTE: AERIAL MATCHING CONTROL is to be adjusted at conclusion of installation.

THE AERIAL: as selected is to be mounted on top of passenger side fender at a position 5" forward from door-fender junction and $1\frac{1}{2}$ " outward from the seam located on top of fender.

1. NOTE During installation of aerial, discard flat rubber packing washer and replace with curved washer supplied in aerial carton.
2. Continue to install selected aerial as detailed in aerial instructions.

AERIAL LEAD-IN CABLE. Feed cable through grommet provided in wall below fender then through main harness grommet near rear of wiper motor



THE RECEIVER is to be mounted behind the instrument panel at a position occupied by an oblong cover panel. A rear bracket supports the passenger side corner to top underside of panel.

1. Remove the ash-tray, glove box and door from the panel.
2. Remove two screws fastening fresh air outlet to lip of panel. This will allow unit to be lowered slightly.
3. Remove oblong cover panel from centre of panel. With lower edge of radio escutcheon central and flush with lower edge of exposed opening in panel, scribe the panel corresponding to spindle holes of escutcheon.
4. Prepare template supplied and locate spindle holes of template over the scribed lines on panel. Cut metal of panel as detailed on template.
5. Loosen the screw situated beneath the top of instrument panel and located near the driving side of the passenger side demisting duct.
6. With flat section on outside of can, fit a No. 6 captive speednut to rear passenger side hole group of receiver.
7. Place the 3/16" spacer rings supplied over the control bush lock nuts then fit dial pointer to carriage arm. NOTE: If a dust shield is fitted, slide shield so that front edge of metal protrudes 5/16" forward of receiver front panel then securely tighten screws.
8. Place receiver behind panel opening, with the spindles protruding through holes
9. Fit dial reading to radio escutcheon. MANUAL RECEIVER ONLY. To push button opening fit filler bar then securely fasten with circular type speednuts.
10. Place escutcheon gasket then escutcheon on to front of panel; fasten to receiver with chrome washers and barrel nuts. Align to panel and securely tighten nuts then fit manual control knobs.
11. With the open ended slot in rear bracket toward driving side, slide the foot of bracket under the head of the previously loosened screw. Slot in other end of bracket is to locate over speednut on side of receiver.
12. Securely tighten panel screw then fasten bracket securely to receiver with a flat washer and a 3/8" x No. 8 bdr. hd. screw.
13. Insert aerial lead-in cable into socket on passenger side corner of receiver.
14. Insert fuse supplied into fuse holder then connect fuse holder to fuse connector on end of lead from receiver.
15. Remove tape from vehicle loom behind lower centre section of instrument panel. Insert receiver battery lead connector into the socket attached to blue lead from loom. Refit tape to loom.

THE SPEAKER: 7" x 5" attached to a baffle assy. is to mount across the passenger side wall corner

1. Place speaker assy. up against protruding ledge located at junction of firewall and passenger side wall.
2. Press against firewall and wall then drill three 1/8" holes in body corresponding to holes in baffle.
3. Fasten assy. securely with flat washers and 1 1/4" x No. 8 bdr. hd. screws.
4. Insert plug on end of speaker lead into receiver socket adjacent to battery lead entry.
5. Refit glove box and door also ash tray and fresh air outlet to instrument panel. Securely tighten fastening hardware.

INTERFERENCE ELIMINATION: No spark plug suppressors are required.

Distributor Suppressor: Insert a screw-in suppressor Part No. 4021-012-01, into the high tension lead from ignition coil a few inches from where it enters the distributor. Check that lead is fitted well into suppressor then securely bind both ends of suppressor to lead with adhesive tape

NOTE: The contacting surfaces of nuts and mount positions for the by-pass capacitors must be entirely free of paint or varnish to ensure a good electrical contact. Lightly smear cleaned surfaces with lanoline.

Generator: · 5mF capacitor Part No. 4007-019-27 (hole in mount foot) Connect lug on lead to generator armature terminal. Remove frame screw and securely fasten capacitor to generator frame.

Ignition Coil: · 5mF capacitor Part No. 4007-019-02 (open slot in mount foot). Connect lug on lead to coil battery terminal. Loosen mount screw of coil bracket, slide mount foot of capacitor under screw and securely tighten.

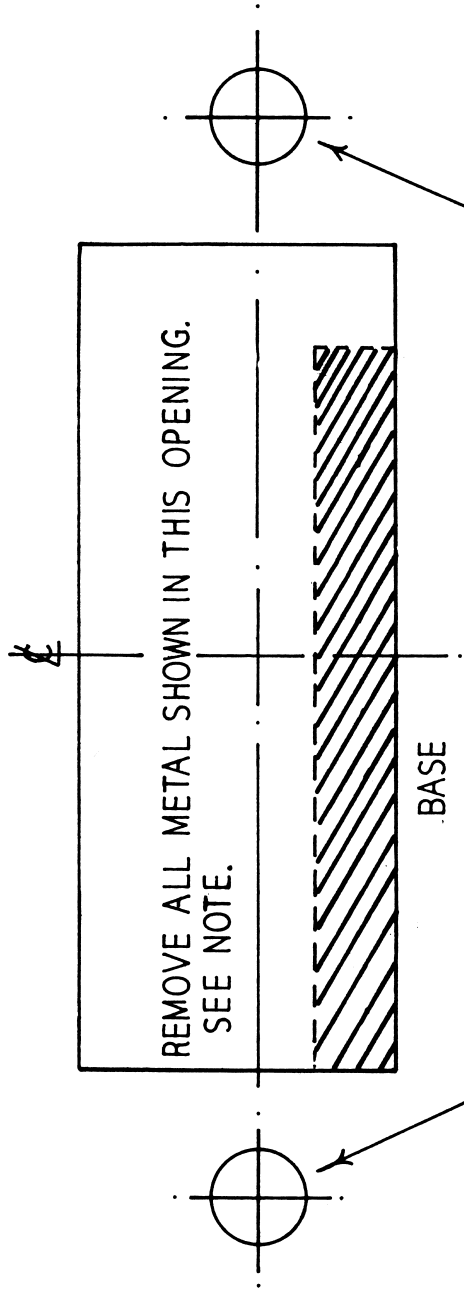
Reconnect leads to car battery.

AERIAL MATCHING CONTROL ADJUSTMENT: Raise aerial to half extended height. Tune receiver to a barely audible station near 1000 Kc/s (approx. centre of dial). Adjust knob on passenger side of receiver for maximum volume of the signal.

DATSUN "BLUEBIRD"

COMPONENT PARTS LIST

4007-093-67	Aerial Lead-in Cable (1) 48" overall
7001-064-01	Polarity Plug (1)
7152-752-01	Speednut (1) No. 6 captive passenger side of receiver
7005-425-01	Spacer Ring (2) control bush lock nuts
7173-042-04	Dial Pointer (1)
7084-147-51	Escutcheon Assy. (1)
	includes
7081-001-01	"Diamond Dot" emblem
7008-123-06	"NIPAC" metcal
7070-045-11	Dial Reading (1) push button
7070-045-21	Dial Reading (1) manual
7119-046-01	Filler Bar (1) push button opening
7152-272-01	Speednut (2) filler bar fastening
7102-055-01	Escutcheon Gasket (1) rubber
7261-484-02	Chrome Washer (2)
7150-854-20	Barrel Nut (2)
7124-226-01	Knob (2) tone and tuning, rear
7124-227-01	Knob (2) volume and tuning, front
7027-292-03	Bracket (1) rear of receiver
7261-218-09	Washer (1) flat steel, 9/16" x 7/32" bracket to receiver
7201-079-08	Screw (1) 3/8" x No. 8 bdr. hd., bracket to receiver
4071-001-02	Fuse (1) 5 Amp.
7113-001-01	Fuse Holder Body (1)
7065-011-01	Fuse Holder Cover (1)
7171-056-02	Terminal (1) receiver battery lead
7009-068-01	Speaker and Baffle Assy. (1)
	includes
4056-012-05	Speaker - 7" x 5" permag. type 75L00/46/15
7009-027-13	Baffle
7104-030-01	Grille
7084-069-03	Escutcheon
7171-015-02	Plug - on end of lead
7244-034-01	Terminal (2) on end of lead
1171-023-08	Speaker Lead (1) 36" required
7261-180-02	Washer (3) flat steel, 3/8" x 3/16", speaker assy. to vehicle
7201-079-40	Screw (3) 1/4" x No. 8 bdr. hd., speaker assy. to vehicle
1169-051-08	Battery Lead (1) 12" required



ALIGN TEMPLATE WITH PREPARED SPINDLE HOLES

NOTE:- DO NOT REMOVE METAL FROM SHADED
AREA WHEN FITTING MANUAL RECEIVER
REMOVE ALL METAL PROTRUDING INTO
RECTANGULAR AREA WHEN FITTING
PUSH-BUTTON RECEIVER.

PBI212