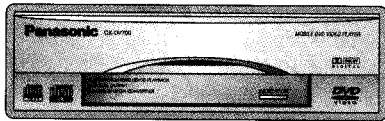
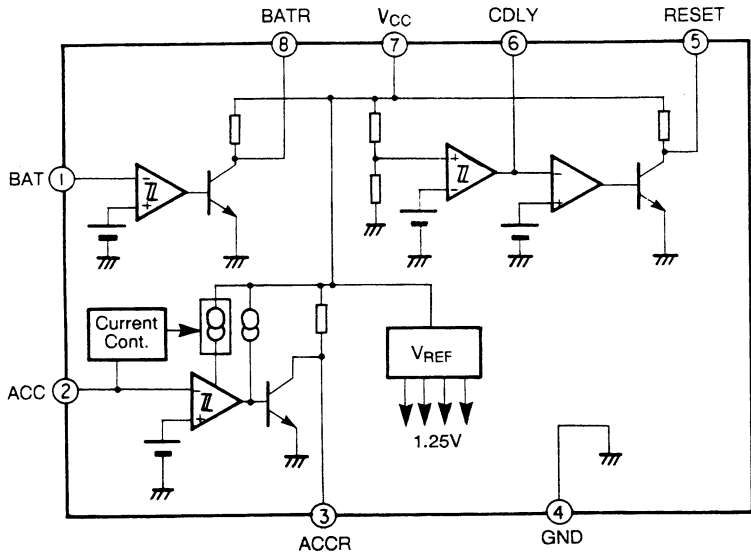


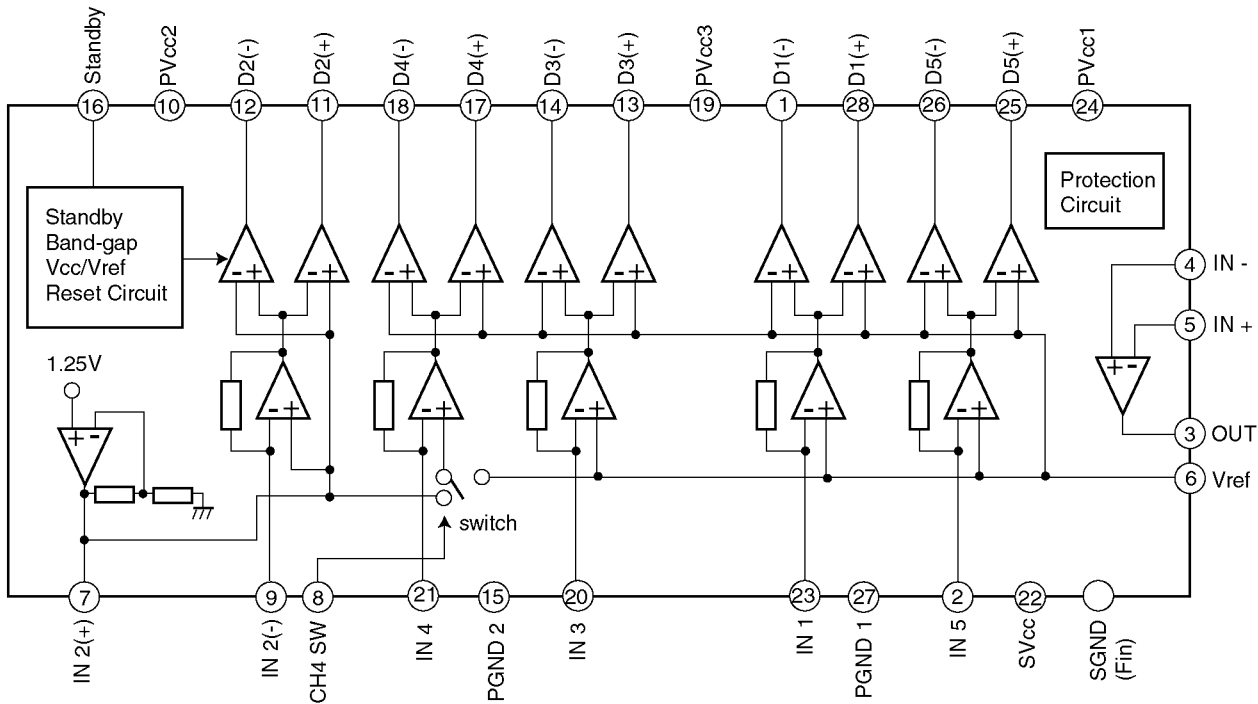
178 mm

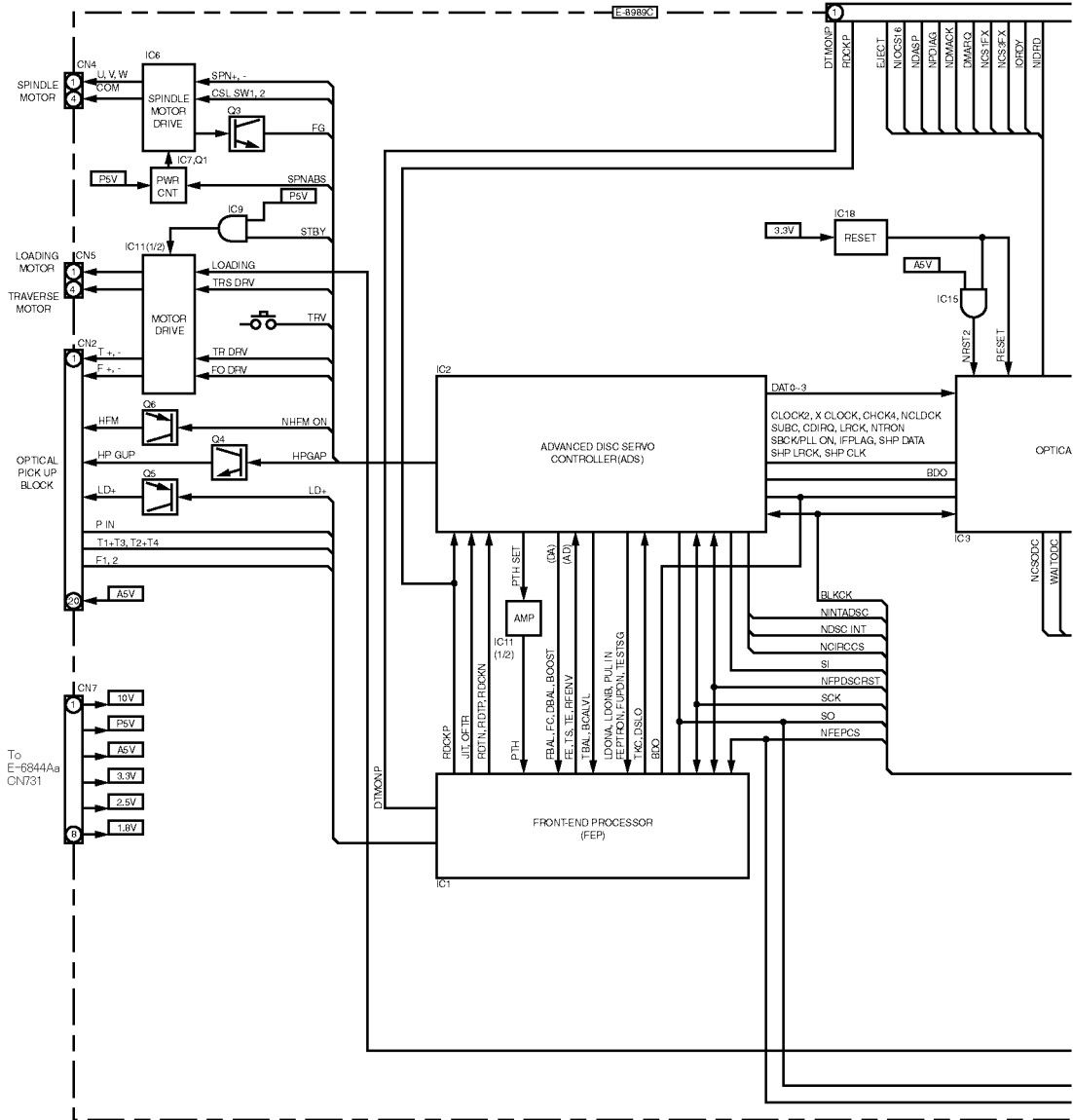


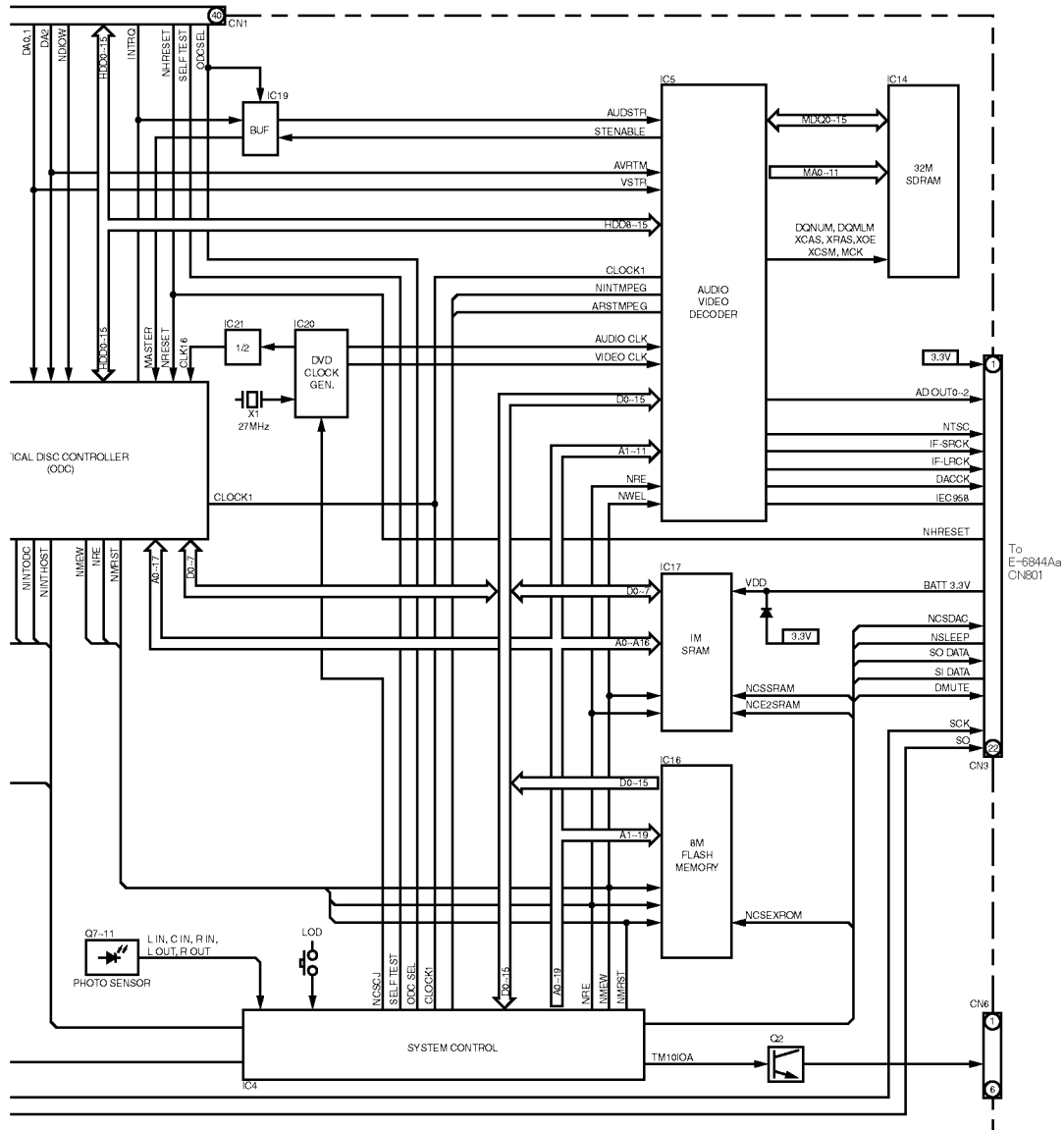
50 mm

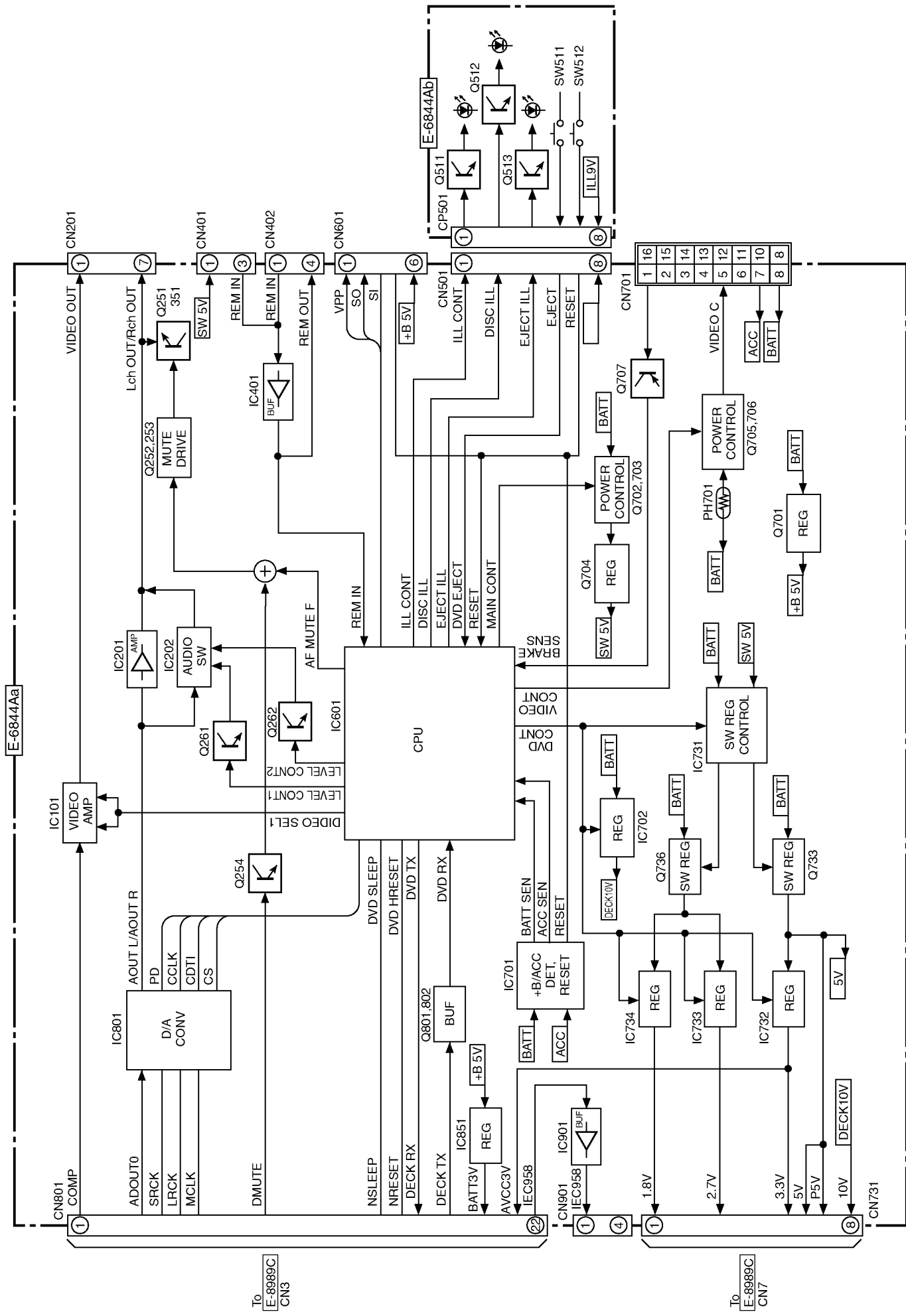
D : 155 mm

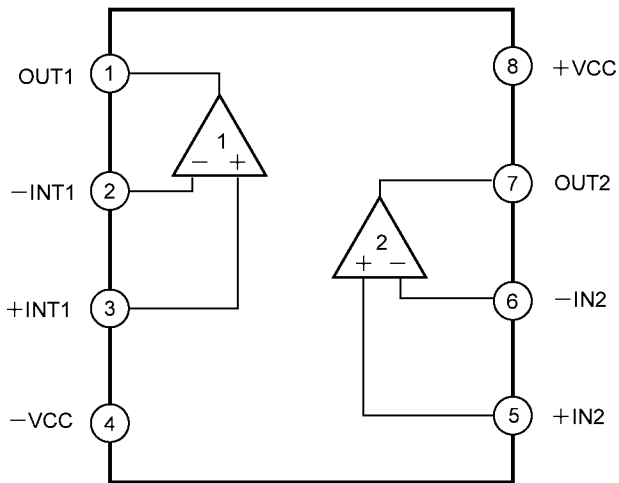




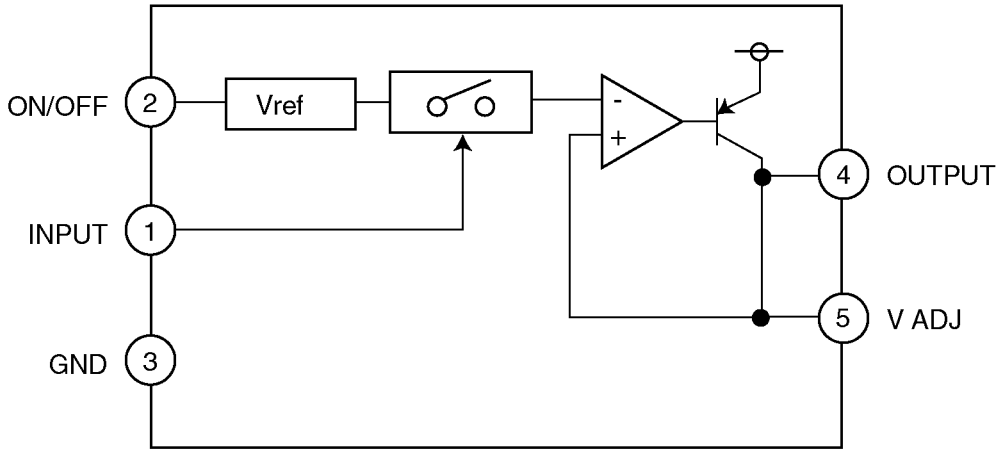


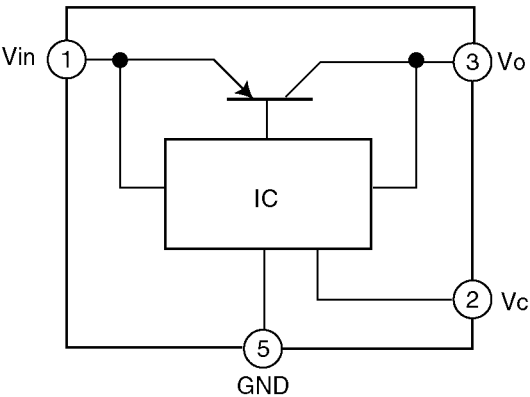


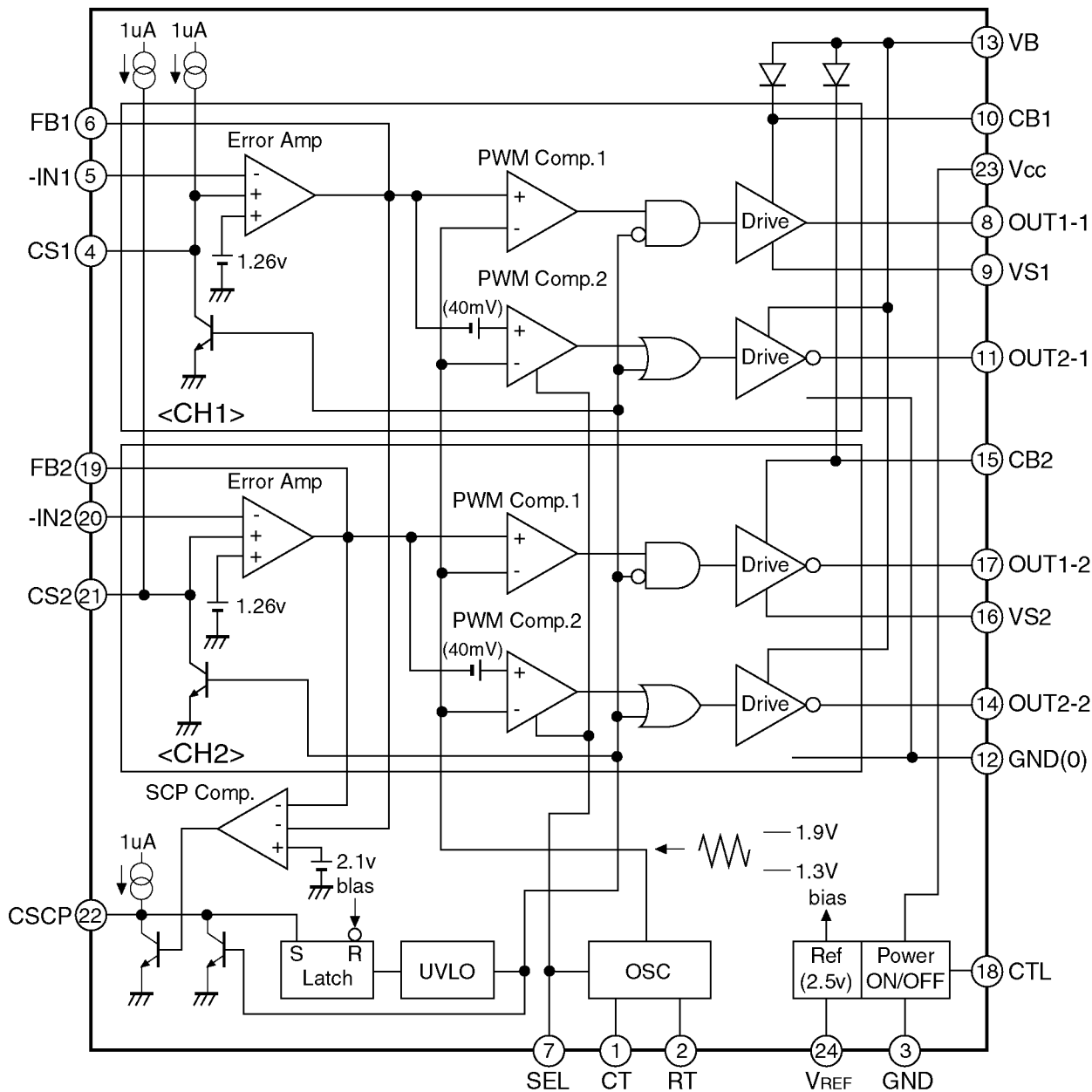


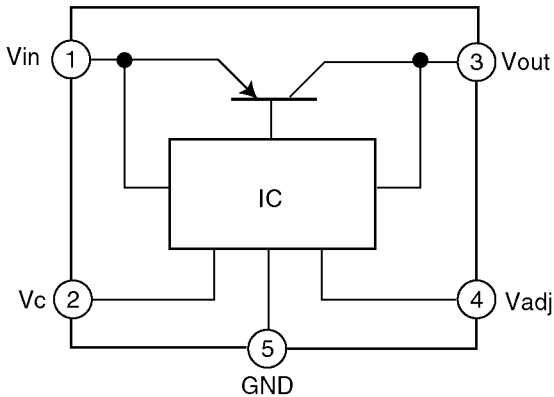


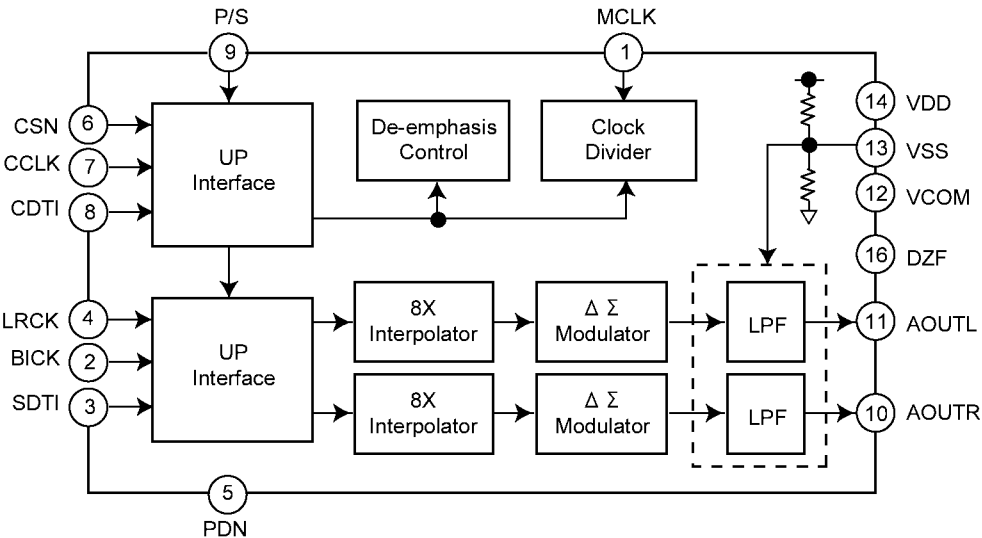


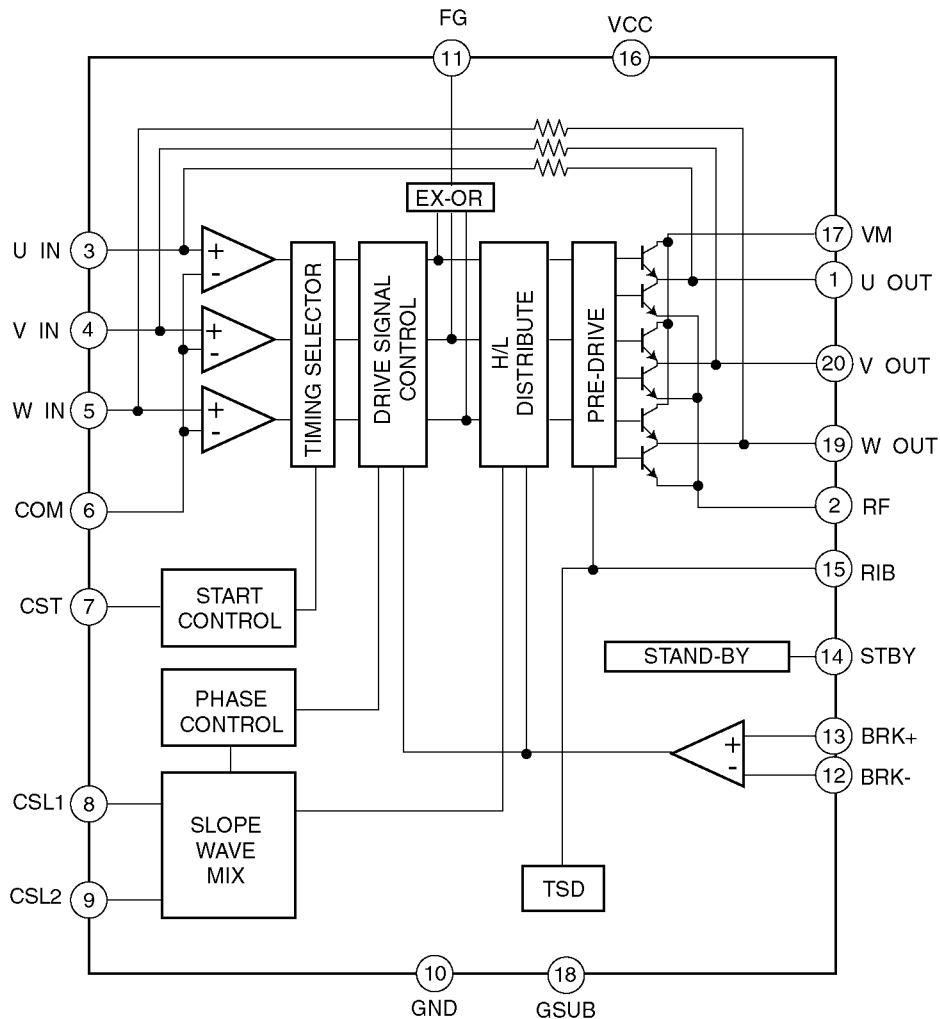


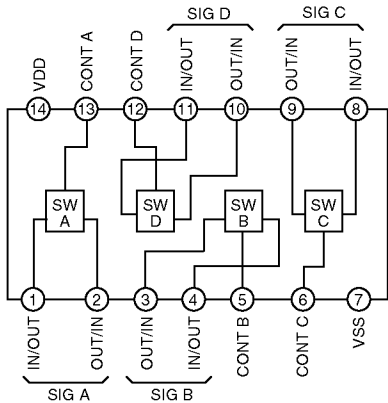


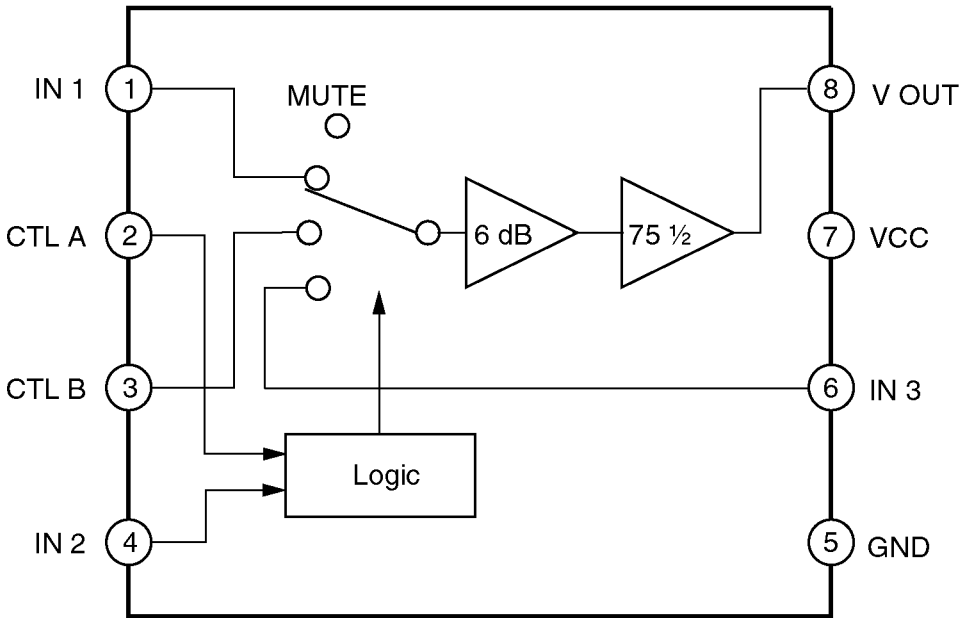




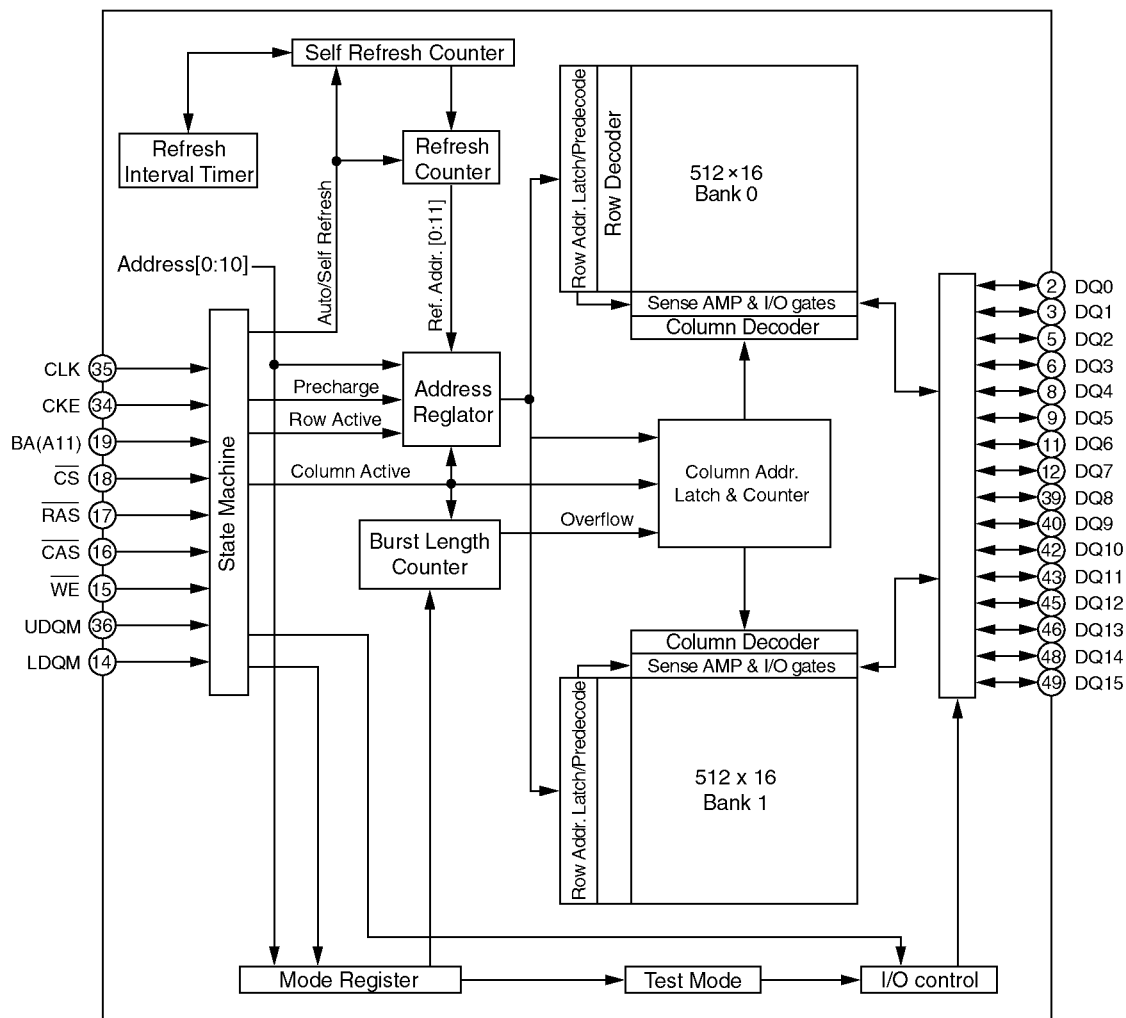


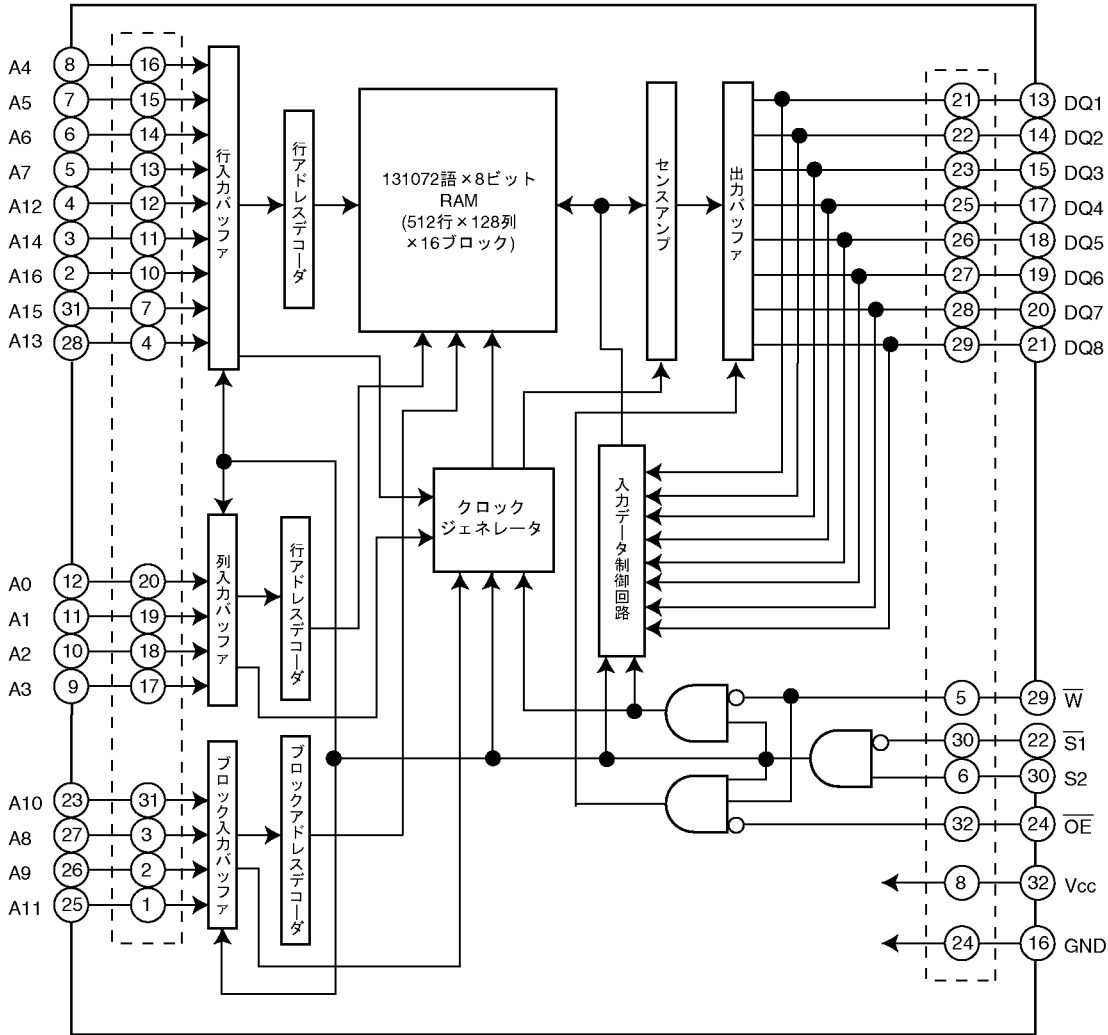


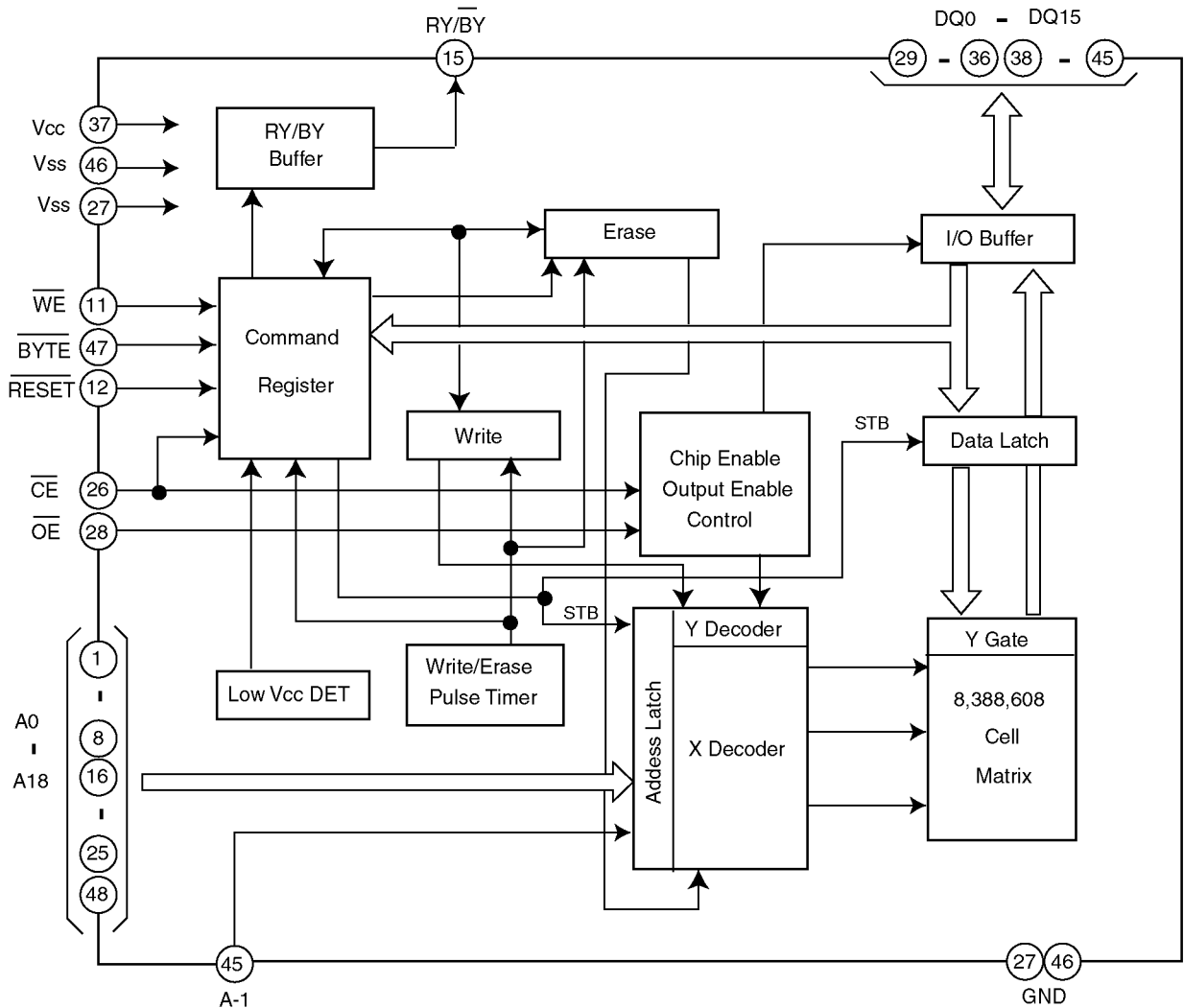


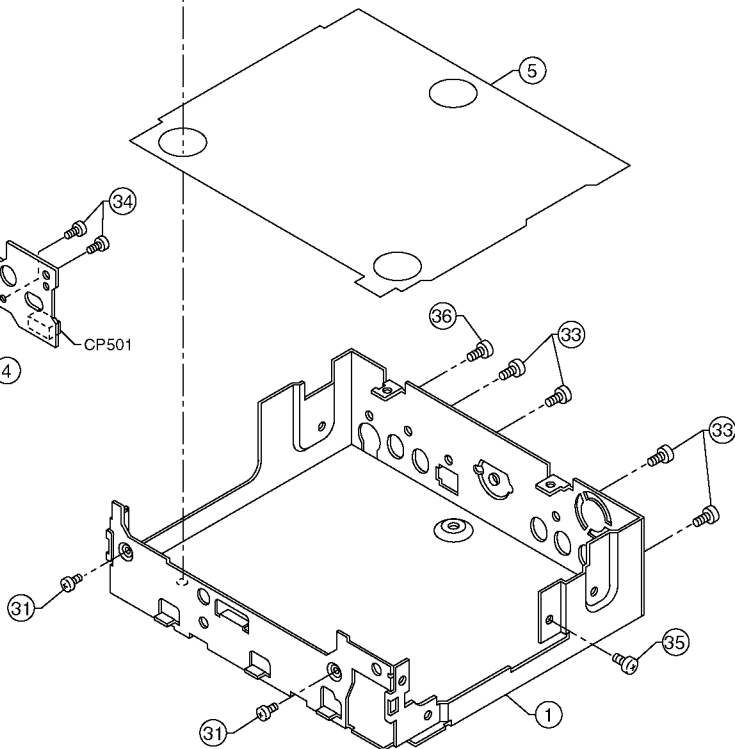
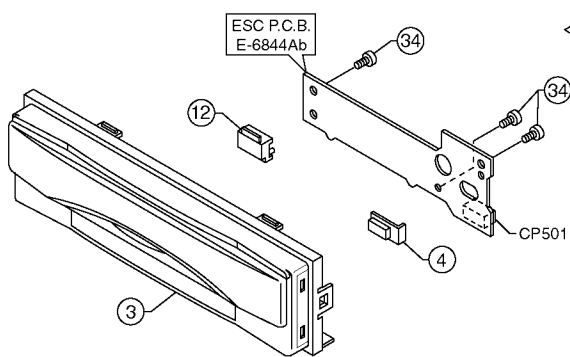
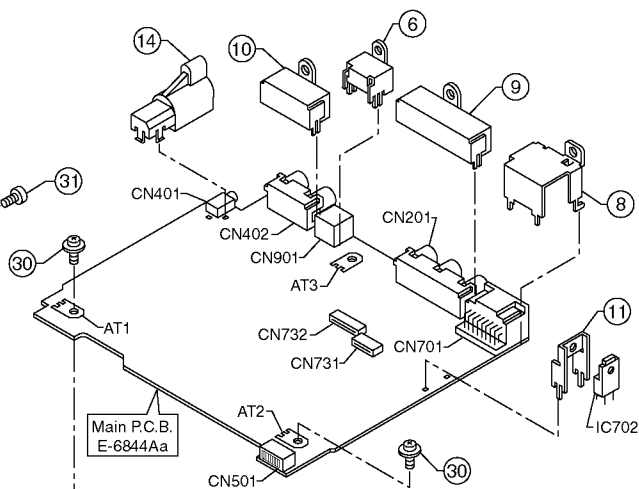
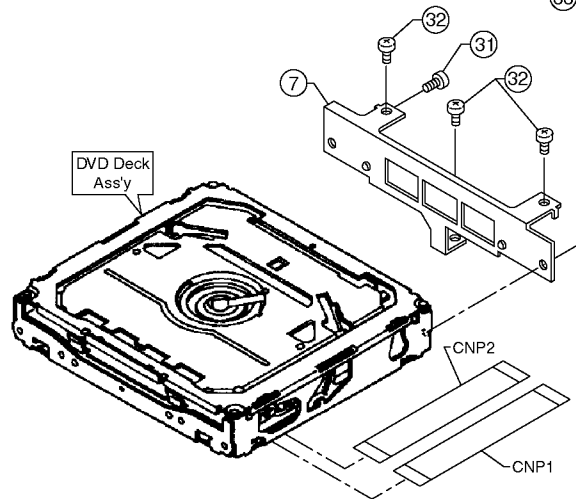
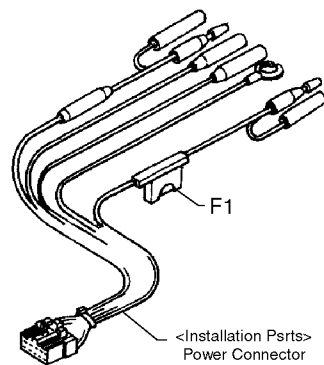
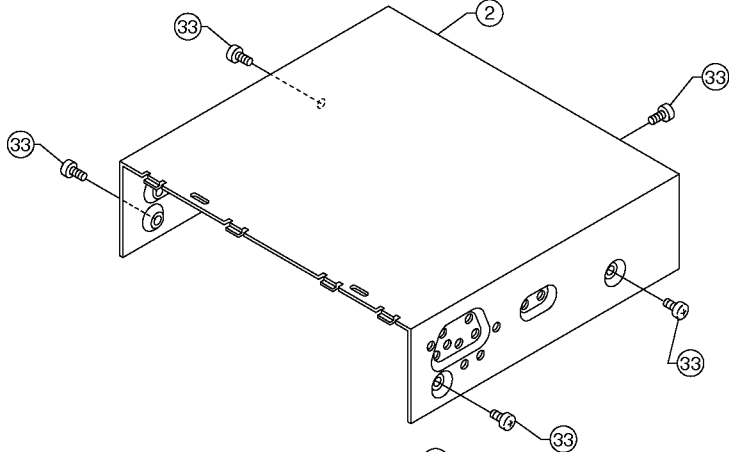












A

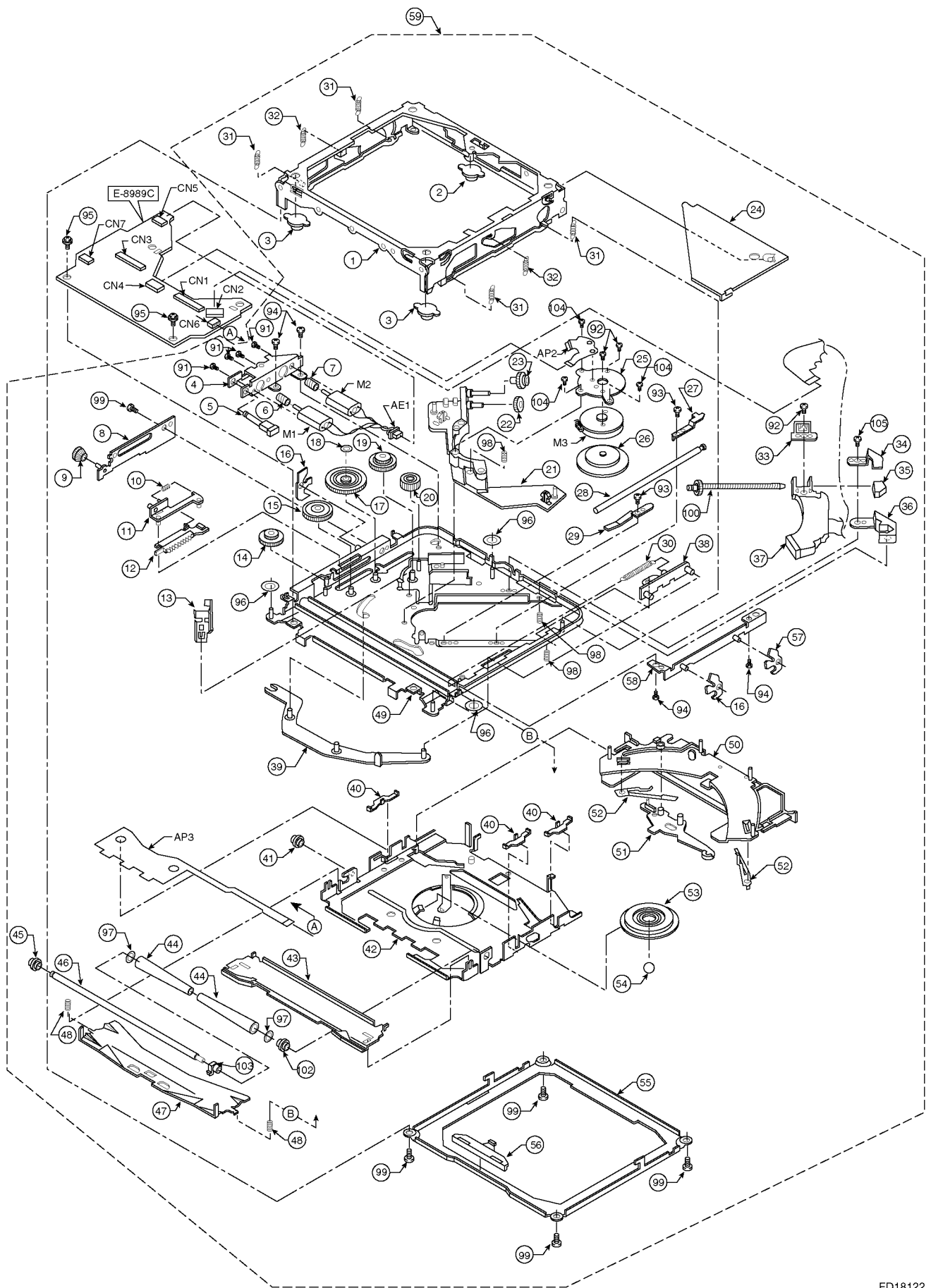
B

2

2

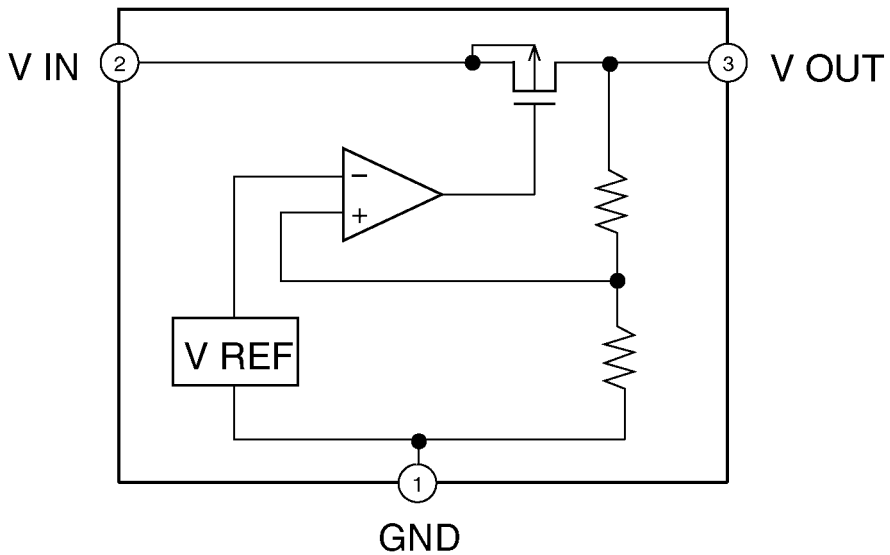
1

1



A

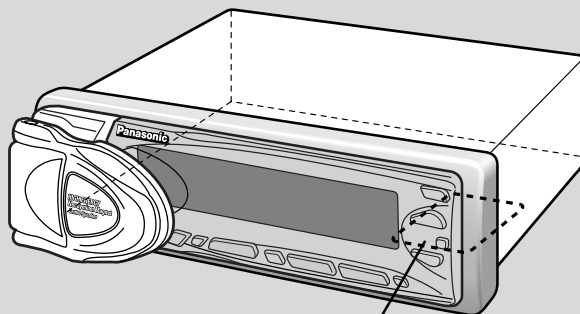
B



## Part 15 of the FCC Rules

This unit has been manufactured under the part 15 of the FCC Rules. Do not attempt to make any changes or modifications to this unit.

## Label Indication and Location



Identification label

**Panasonic**

Model No. **CQ-DRX900U**  
N° De Modèle



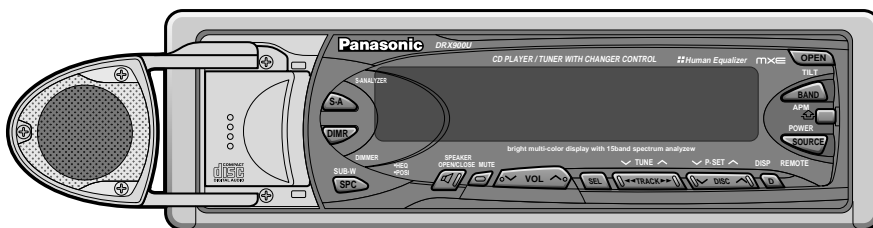
Manufactured by Matsushita Communication Industrial Co., Ltd.  
Yokohama Japan Made in Japan

Serial No.  
N° De Série

This device complies with Part 15 of the FCC Rules. Operation is subject to the condition that this device does not cause harmful interference.

# General

This manual explains mainly remote control operations. However, some operations are not functioned with a remote control. In such cases, the manual gives you how to operate the functions using main unit buttons.



## Power

Turn the key in the ignition until the accessory indicator lights.

On : Press **[PWR]**.

Off : Press again.

## Volume

[^] : Up

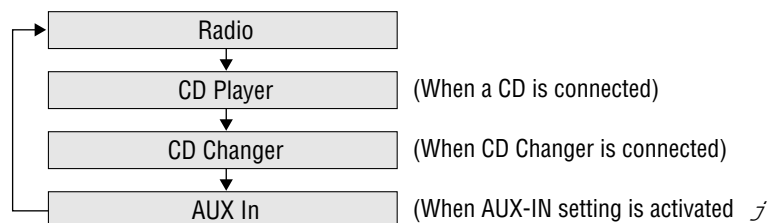
[V] : Down

**Note** : The sound levels are respectively stored in the memory for each source mode.

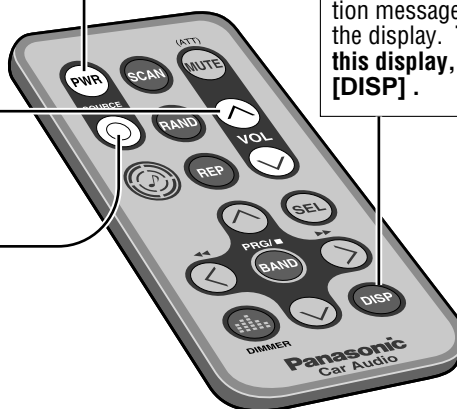
## Source

Press **[SOURCE]**

to change the source.

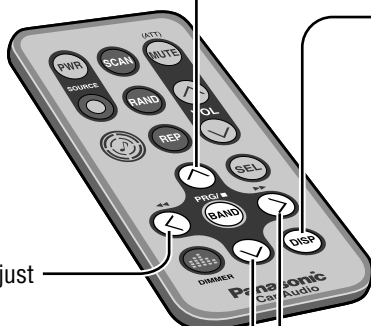


**Note** : When the power is switched on for the first time, a demonstration message appears on the display. **To cancel this display, press [DISP]**.



## Clock Set

Advance

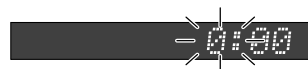


1 Press and hold **[DISP]** for more than 2 seconds.

2 Press **[<]** : Hour adjustment  
[^] : Advance [V] : Back

3 Press **[>]** : Minute adjustment  
[^] : Advance [V] : Back

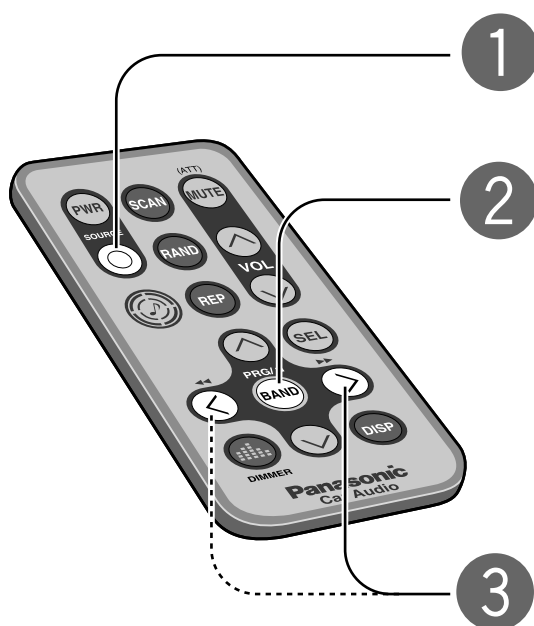
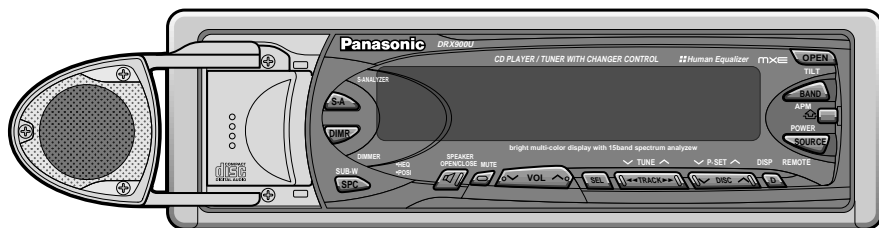
4 Press **[DISP]** : end







# Radio

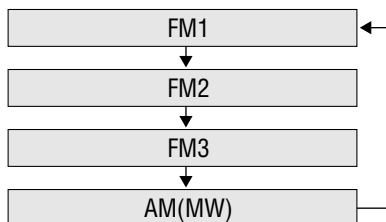


## 1 Radio Mode

Press **[SOURCE]** to change to radio mode.

## 2 Band

Press **[BAND]**.



## 3 Tuning

[>] : Up

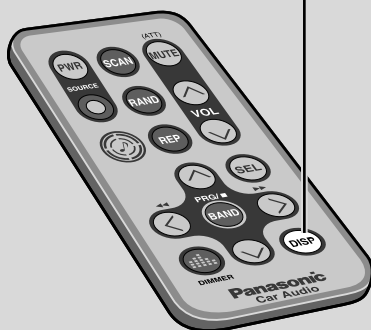
[<] : Down

Press and hold [>] or [<] for more than 0.5 seconds, then release. Seeking will start.

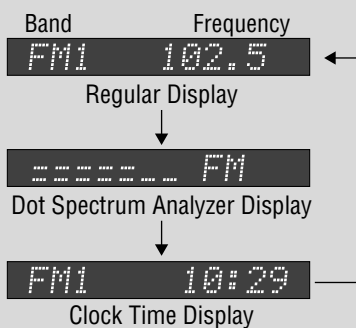
**Note:** The stereo indicator lights during reception of an FM stereo broadcast.



## Display Change



Press **[DISP]** to change the display.

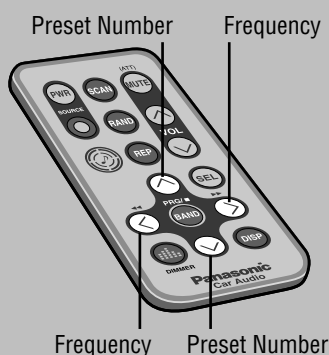


# Selection of a preset station in a one-touch action

Up to 6 stations each can be saved in the FM1, FM2, FM3 and AM (MW) preset station memories.

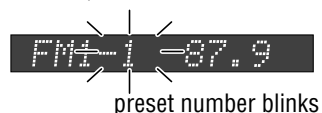
## Manual Preset Memory

Save the desired station in preset memory manually

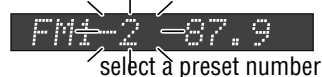


Select a band (step ①, ② on the previous page)

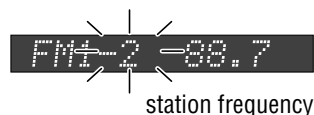
① Press and hold [^] or [v] for more than 2 seconds.



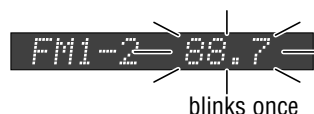
② Press [^] or [v].



③ Press [>] or [<].



④ Press and hold [^] or [v] for more than 2 seconds.



## Auto Preset Memory

Save stations in good receiving condition in preset memory automatically

Select a band (step ①, ② on the previous page)

Press and hold [BAND] for more than 2 seconds.



- The 6 strongest available stations will be automatically saved in the memory under preset numbers 1 to 6.
- Once set, the preset stations are sequentially scanned for 5 seconds each.
- To stop the scanning, press [^] or [v].

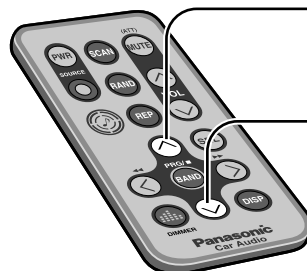
**Note:** The stations manually preset on the selected band will be deleted.

## Preset Station Calling

Select a band (step ①, ② on the previous page)

Press [^] to select the preset number to tune in the preset station.

[v]: opposite direction





## 2 Disc Insert

## Track Selection

[▶▶] : Next track.  
[◀◀] : Beginning of the current track.  
Previous track. (Press twice)

**To eject the disc**  
press **[▲]**

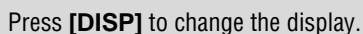
### When CD is in the player

Press **[SOURCE]** to change to CD player mode.

## Track Search

Press and hold  
**[▶▶]** : fast forward  
**[◀◀]** : fast backward

## Display Change



Track Number	Playing time
--------------	--------------

Regular Display

Dot Spectrum Analyzer Display

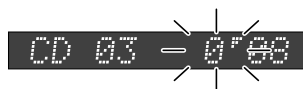
Diagram illustrating a clock time display. The display shows the text "CD" on the left and "11:56" on the right, representing the current time. Below the display is the label "Clock Time Display".

## Various Way of Listening

### Scan Play

The first 10 seconds of each track plays in sequence.

Press **[SCAN]**



With the scanning of all tracks over, the original program starts playing from the beginning.

Press **[SCAN]** again to cancel.

### Random Play

All the available tracks are played in a random sequence.

Press **[RAND]**



Press **[RAND]** again to cancel.

### Repeat Play

Repeat the current selection.

Press **[REP]**



Press **[REP]** again to cancel.

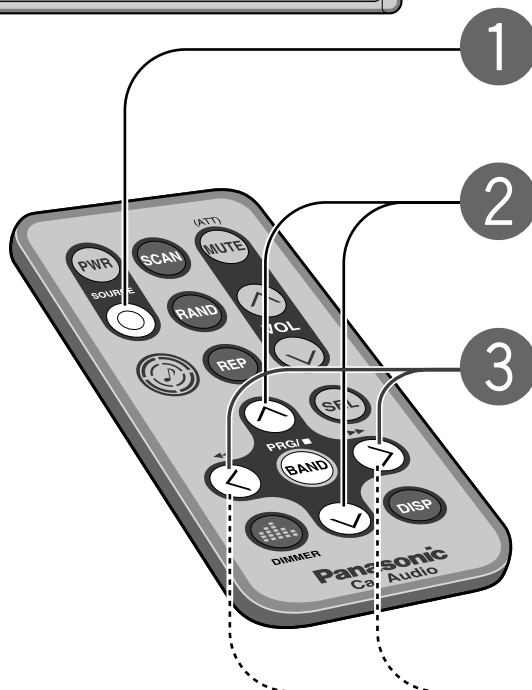
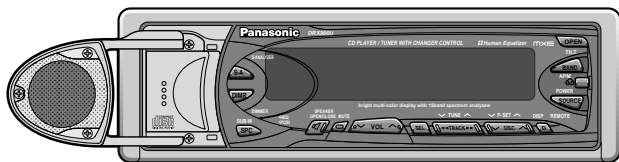
#### Cautions:

- Do not apply a strong downward force onto the face plate and do not put anything on it while it is open, or it might be damaged.
- Do not use irregularly shaped CDs (Heart-Shaped, Octagon, etc)

# CD Changer

## Notes :

CD changer functions are designed for optional Panasonic CD changer unit.



### 1 CD Changer Mode

Press **[SOURCE]** to change to CD changer mode.

### 2 Disc Selection

**[^]** : Next disc.  
**[v]** : Previous disc.

### 3 Track Selection

**[>>]** : Next track.  
**[<<]** : Beginning of the current track.  
Previous track. (Press twice)

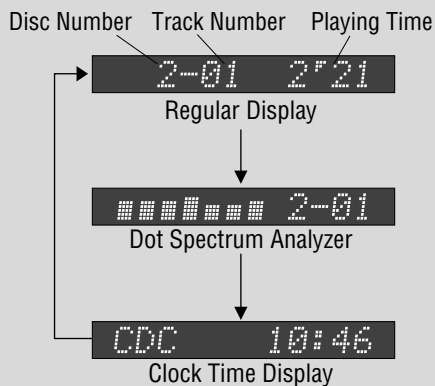
### Track Search

Press and hold  
**[>>>]** : fast forward  
**[<<<]** : fast backward

## Display Change



Press **[DISP]** to change the display.



## Various Way of Listening

### Track Scan

The first 10 seconds of each track on the discs plays in sequence.

### Disc Scan

The first track of all the discs in the magazine is played for 10 seconds each.

### Track Random

All the available tracks on all discs in the magazine are played in a random sequence.

### Disc Random

All the available tracks on current disc are played in a random sequence.

### Track Repeat

Repeat the current selection

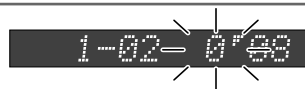
### Disc Repeat

Repeat the current disc selection

Press **[SCAN]**



Press and hold **[SCAN]** for more than 2 seconds.



With the scanning of all tracks over, the original program starts playing from the beginning.

Press **[SCAN]** again to cancel.



With the scanning of all tracks over, the original disc starts playing from the beginning.

Press and hold **[SCAN]** again to cancel.

Press **[RAND]**



Press and hold **[RAND]** for more than 2 seconds.



Press **[RAND]** again to cancel.



Press and hold **[RAND]** again to cancel.

Press **[REP]**



Press and hold **[REP]** for more than 2 seconds.

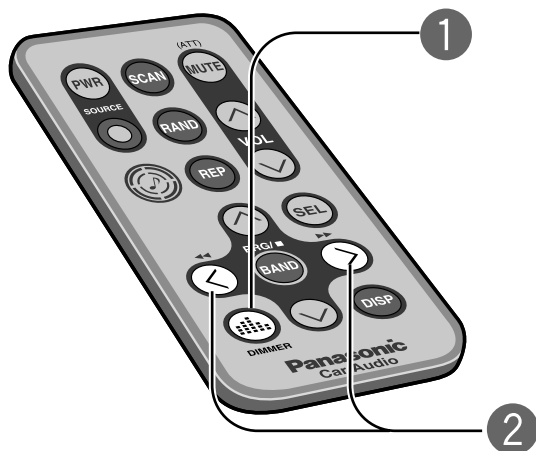


Press **[REP]** again to cancel.



Press and hold **[REP]** again to cancel.

# Useful Functions



## Spectrum Analyzer Display

Default : WAVE  
Variety : 11 types

## Display Brightness Setting range (Dimmer)


Default :  
DIMMER LEV 2 : at side maker lamp on  
DIMMER LEV 3 : at side maker lamp off  
Setting range : LEV 1 to LEV 3

## Volume Down (Mute/Attenuator)

The volume decreases depending on which setting you selected Mute or ATT. (→ page28)

Default : off



① Press [

**SPEANA SEL**

② Press [ $\triangleright$ ] to change the spectrum analyser display.  
([ $\triangleleft$ ] : opposite direction)

WAVE, AURORA, ---, BLANK SPEANA, ALL DISP OFF, etc.


Note :

**BLANK SPEANA**

Turn off the Spectrum Analyzer display only.

**ALL DISP OFF**

Turn off the whole display. (The display is turned on during operations. Then the display is turned off 5 seconds after operations.

① Press and hold [] (DIMMER) for more than 2 seconds.

**DIMMER SEL**

② Press [] (DIMMER) to change the dimmer level as follows.



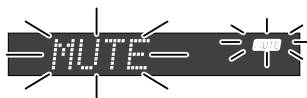
Press [MUTE] (ATT) to switch the MUTE mode (ATT mode) between on and off.

When MUTE is set

**MUTE off** ..... Regular volume level



**MUTE on** ..... No sound



When ATT is set

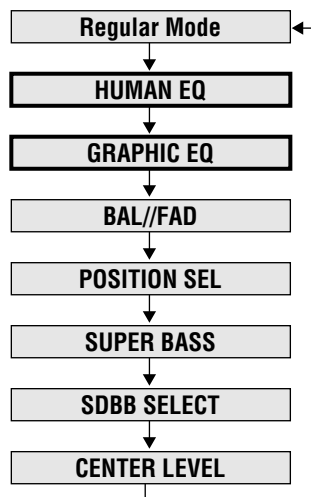
**ATT off** ..... Regular volume level



**ATT on** ..... Decrease the volume to 1/10 of previous level.



# Sound Settings and Sound Space



**1 Press [SEL] to select an operation**



**2 Set Up**

## Tone Quality (Human Equalizer/HEQ)

49 patterns are already prepared, so that you can make complicated adjustment easily.

Default  $\neq$ FLAT(0)

Setting range  $\neq$ 1 - 3 for each patterns (49 patterns)

## Registering Your Desired Tone Quality (Graphic Equalizer/GEQ)

The level in each of 7 frequency bands from bass to treble can be adjusted. Up to 5 kinds of adjusted tone quality can be saved in the memory. (preset memory 1 to 5)

Default  $\neq$ 0 for each frequency

Setting range  $\neq$ -12 to +12 by 2 dB step

## 1 Press [SEL]

## 2 Set up

Select

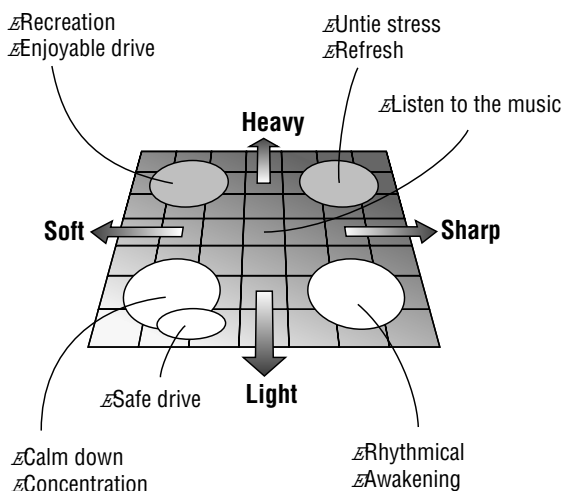
### HUMAN EQ

[^] : Heavy bass

[v] : Light bass

[>] : Sharp treble

[<] : Soft treble



### Memorize

After selecting one of the preset numbers 1 - 5,

- ① Press and hold [SEL] for more than 2 seconds to change to graphic equalizer preset mode.
- ② Adjust the level for each frequency.  
Press [>] to change the frequency.



Press [^] to select one of the preset numbers 1 - 5, and the preset tone quality is recalled.

- / [<] (opposite direction)
- [^] (Upper level)
- [v] (Lower level)

- ③ Press [SEL] to save the level.

[v] : opposite direction  
f

### Calling Back the Recommended Setting

A tone quality that excludes blurred bass and is comfortable to listen to is already saved in the preset number 6.

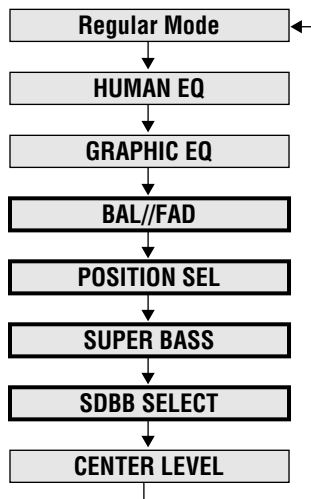
Press [^] or [v] to select preset number 6.

**Note:** You can not save in the preset number 6.

Select

### GRAPHIC EQ

# Sound Settings and Sound Space



## Balance and Fader (Balance/Fader)

You can adjust the sound balance among the front, rear, right and left speakers.  
Default : B(Balance) : CNT(Center)  
F(Fader) : CNT(Center)  
Setting range 15 levels for each

## Sound Image (Position)

You can adjust the sound image in accordance with a listener position.

Default : POSI OFF

## Rear Speakers for Sub-Woofer (Super base Control Sub-Woofer/SBC-SW)

You can utilize the rear speaker connected to the built-in amplifier as sub-woofer that outputs only bass.

Default : Off

## Bass Enhancement (Super Dynamic Bass Boost/SDBB)

Enhanced bass comes out from the 4 speakers connected to the built-in amplifier, so that you can enjoy heavy bass sound.

Default : Off

## 1 Press [SEL]

Select

**BAL//FAD**

## 2 Set Up

[^] : Front enhanced

[v] : Rear enhanced

[>] : Right enhanced

[<] : Left enhanced

Select

**POSITION SEL**

Press [>] to change as follows. ([<] : opposite direction)

→ **OFF** ..... All seats  
↓  
**RIGHT** ..... Front right  
↓  
**LEFT** ..... Front left  
↓  
**FRONT** ..... Front  
↓  
**REAR** ..... Rear

Select

**SUPER BASS**

[>] : On---Bass Enhancement (Monaural)

[<] : Off---Regular Output (Stereo)

**SBC-SW ON**

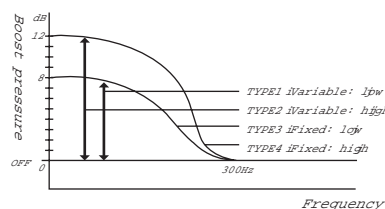
- Adjust the Sub-Woofer output level (→ page 26)  
It is also interlocked with the preout (rear speaker output).
- BAL/FAD, POSITION, SDBB and Space settings for rear speaker output will be invalid.

Select

**SDBB SELECT**

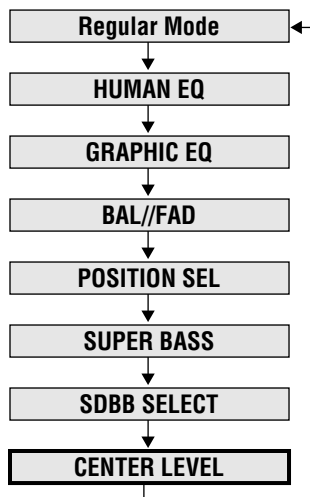
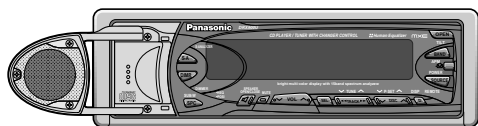
Press [>] to change as follows. ([<] : opposite direction)

→ **SDBB Off** ..... Normal output  
↓  
**SDBB Type1** ..... Variable, low  
↓  
**SDBB Type2** ..... Variable, high  
↓  
**SDBB Type3** ..... Fixed, low  
↓  
**SDBB Type4** ..... Fixed, high



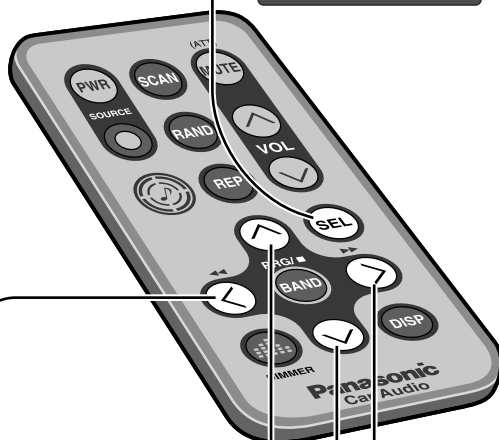
- Variable : Bass enhancement along with the volume
- Fixed : Bass enhancement with fixed range

# Sound Settings and Sound Space



**1 Press [SEL] to select**

CENTER LEVEL



**2 Select**

CENTER DELAY

**Select**

CENTER LEVEL

**3 Set Up**

Up

Down

## Center Speaker Output

Sound image is raised and oriented toward the center forward.

## Adjust the Center Speaker Volume

(Center Speaker Volume Level)

Default : 0

Setting range  $\text{FZ}$  , -10 to +10

@ @

@ @ @ by 2dB(decibel) step

## Adjust the Sense of Distance

(Center Speaker Delay Time)

Default : 0

Setting range : -10 to +10

1 step = 0.0003 seconds

## 1 Press [SEL]

Select

**CENTER LEVEL**

### Adjustment Procedure

**Open the center speaker.** (→ page 11)

#### 1. Adjust the center speaker volume.

Adjust the volume so that middle tone such as vocal is oriented toward the center forward without adding DSP effect to the center speaker. (Center speaker delay time : 0, sound space : Space off)

#### 2. Adjust the sound space and the center speaker delay time.

#### 3. Adjust the center speaker volume again.

Adjust the volume to suit with the sound space setting.

## 2 Press [<] or [>] 3 Set Up : Press [^] or [v]

Press [>] to select

**CENTER LEVEL**

[^] ≠Up

[v] ≠Down

- ≠No sound from the center speaker

Press [<] to select

**CENTER DELAY**

[^] ≠Longer delay time, farther sound image

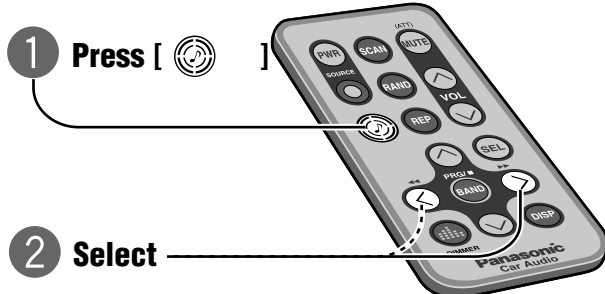
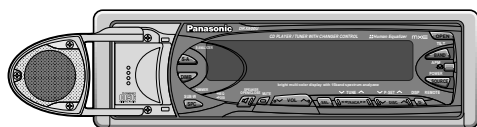
@ @ (center speaker output gets later)

[v] ≠Shorter delay time, closer sound image.

@ @ (center speaker output gets earlier)

@0 ≠Both outputs between other speakers and center speaker get synchronized.

# Sound Settings and Sound Space

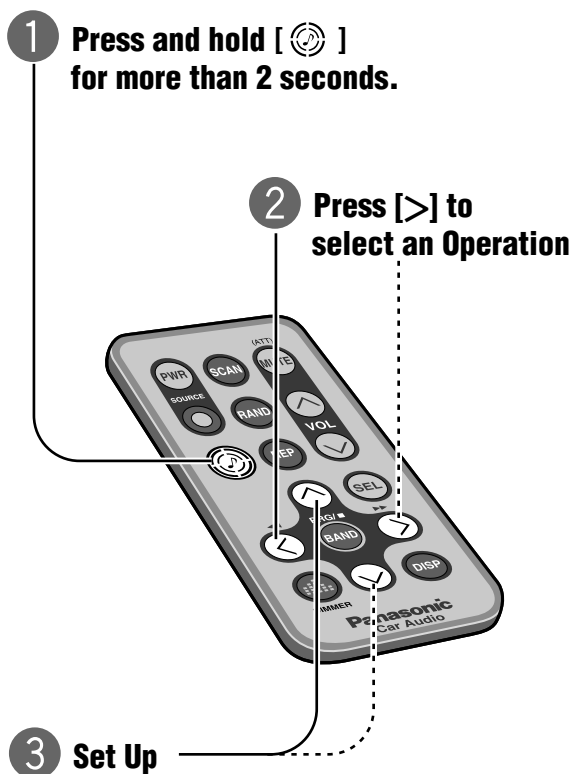


## Sound Space Reproduction (Space)

Concert hall presence in your car  
Default : Off

## Sub-Woofer Output (Digital Dynamic Bass Control/DDBC)

This adjustment is effective when Sub-woofer is connected or when the rear speakers are used as Sub-Woofer.  
(→ page 22)



## Sub-Woofer Volume (DDBC Volume Level)

Default : 0  
Setting range  $\pm 10$ , -10 to +10  
by 2dB step

## Sense of Distance (DDBC Delay Time)

There is no delay time between speaker sound and Sub-Woofer, so that you can enjoy dynamic heavy bass.

Default : 0  
Setting range  $\pm 10$  to +10  
1 step = 0.0003 seconds

## Bass Control (DDBC Cut off Frequency)

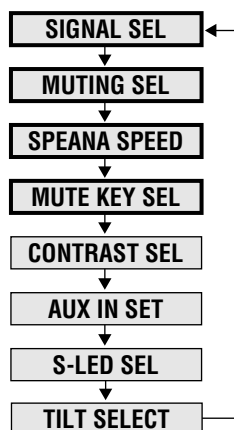
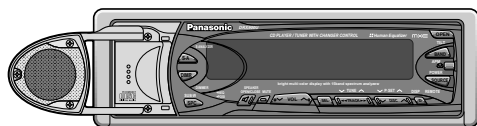
By controlling the upper limit of bass cutoff frequency, you can enjoy clear sound.

Default : OFF





# Other Settings

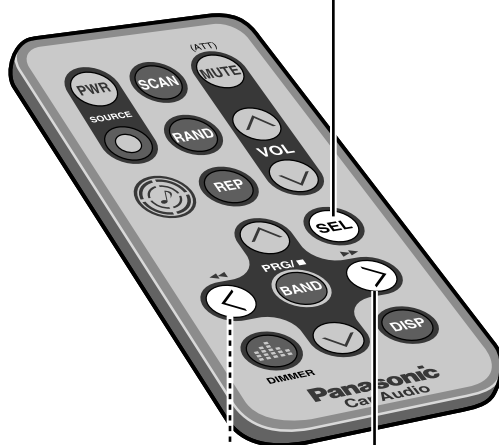


1

**Press and hold [SEL] for more than 2 seconds**

2

**Press [SEL] to select an operation**



3 **Set Up**

## Operation Sound

(Signal/beep sound)

You can select a sound (operation sound) that comes from the center speaker when pressing the buttons and adjust the volume.

Default : SIGNAL SOUND  
SIGNAL Level 3

## Navi Mute

You can select a muting way of the current source while voice guidance comes out from a navigation system.

Default : MUTING ON

## Spectrum Analyzer Speed

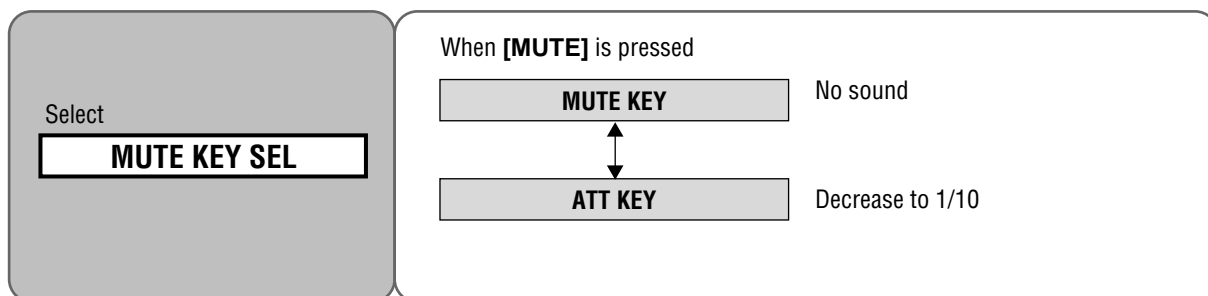
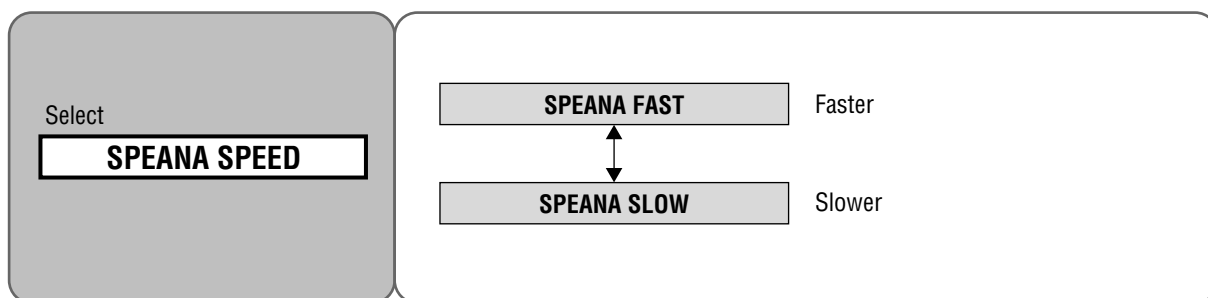
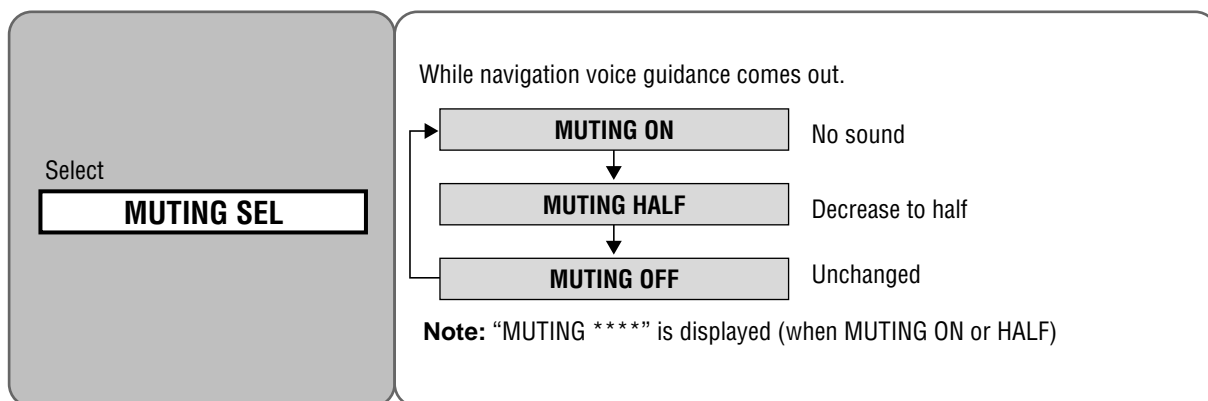
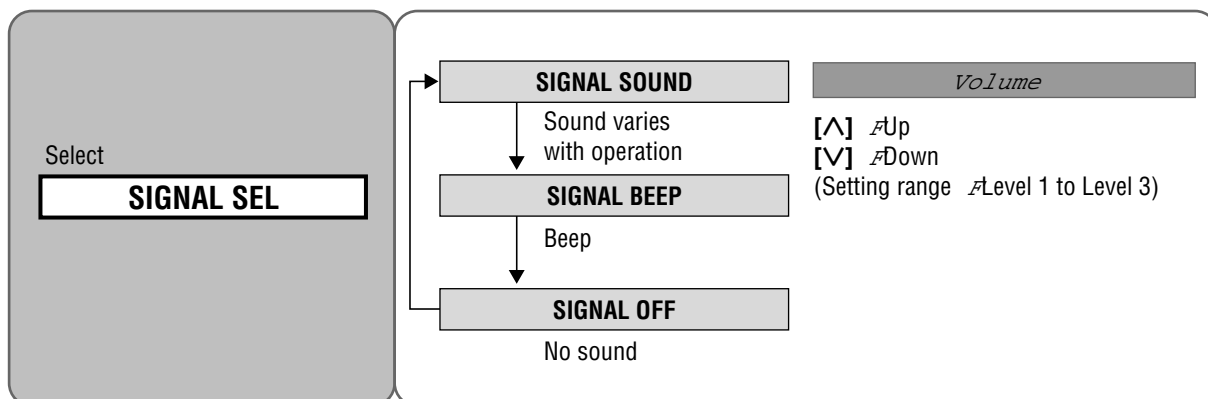
Default : SPEANA FAST

## Mute/ATT

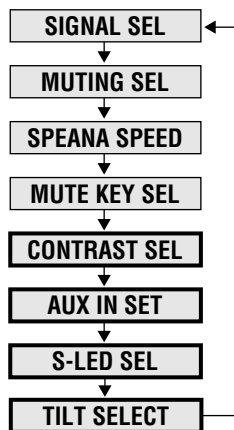
Default : MUTE KEY

## 2 Press [SEL]

## 3 Press [>] or [<]



# Other Settings

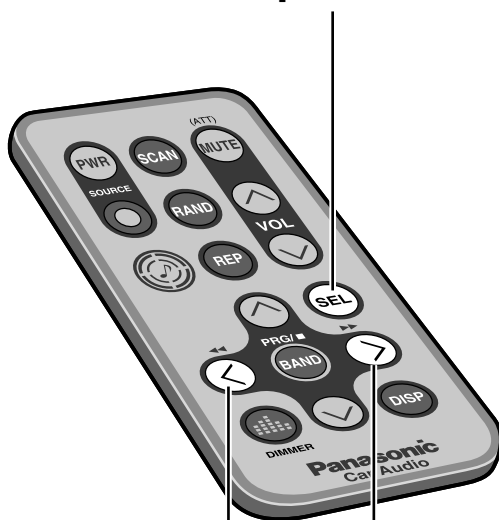


1

**Press and hold [SEL] for more than 2 seconds**

2

**Press [SEL] to select an operation**



3 **Set Up**

**Down/Off**

**Up/On**

## Contrast

Contrast adjustment makes it easier to watch the display.

Default : Level 3

Setting range : Level 1 to Level 5

## Removing AUX-IN from Source Selection

AUX will be excluded not to be selected.

Default : On

## Security Indicator

The security indicator blinks while the removable face plate is removed from this unit.

Default : On

## Using Without Changing Panel Angle (Tilt On/Off)

(→ page 11 about tilt setting)

Default : On

## 2 Press [SEL]

## 3 Press [>] or [<]

Select

**CONTRAST SEL**

[>] : Up

[<] : Down

Select a level for easy watch.

Select

**AUX-IN SET**

[>] : AUX-IN On

External input (AUX-IN) is an object of source selection

[<] : AUX-IN Off

External input (AUX-IN) is not an object of source selection.

With AUX-IN set to OFF, AUX-IN will not be selected when **[SOURCE]** is pressed. (⇒ page 10 about source select)

Select

**S-LED SEL**

[>] : S-LED On

The indicator blinks when the panel is removed.

[<] : S-LED Off

The indicator does not blink when the panel is removed.

Select

**TILT SELECT**

[>] : TILT On

Panel angle can be adjusted.

[<] : TILT Off

Panel angle cannot be adjusted.

# Installation Guide



## WARNING

This installation information is designed for experienced installers and is not intended for non-technical individuals. It does not contain warnings or cautions of potential dangers involved in attempting to install this product.

Any attempt to install this product in a motor car by anyone other than qualified installer could cause damage to the electrical system and could result in serious personal injury or death.

## Overview






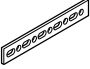


This product should be installed by a professional. However, if you plan to install this product yourself, your first step is to decide where to install it. The instructions in these pages will guide you through the remaining steps: **(Please refer to the “WARNING” statement above).**

- Identify and label the car wires.
- Connect the car wires to the wires of the power connector.
- Install the unit in the dash.
- Check the operation of the unit.

If you encounter problems, please consult your nearest professional installer.

**Caution:** This unit operates with a 12 volt DC negative ground auto battery system only. Do not attempt to use it in any other system. Doing so could cause serious damage.

## Installation Hardware

No.	Item	Diagram	Q'ty
①	Mounting Collar		1
②	Mounting Bolt (5 mmø)		1
③	Power Connector		1
④	Removable Face Plate Case		1
⑤	Trim Plate		1
⑥	Rear support strap		1
⑦	Tapping screw		1
⑧	Hex. Nut		1

Before you begin installation, look for the items on the right which are packed with your unit.

- **Warranty Card** ..... Fill this out promptly.
- **Panasonic Servicenter for Service Directory** ..... Keep for future reference in case the product needs servicing.
- **Installation Hardware** ..... Needed for in-dash installation

## Required Tools

You'll need a screwdriver, a 1.5 volt AA battery, and the following:

12 V DC  
Test Bulb



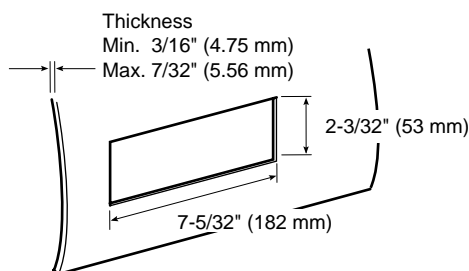
Electrical  
Tape



Side-Cut  
Pliers



## Dashboard Specifications



## Identify All Leads

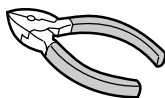
The first step in installation is to identify all the car wires you'll use when hooking up your sound system.

As you identify each wire, we suggest that you label it using masking tape and a permanent marker. This will help avoid confusion when making connections later.

**Note:** Do not connect the power connector to the stereo unit until you have made all connections. If there are no plastic caps on the stereo hooking wires, insulate all exposed leads with electrical tape until you are ready to use them. Identify the leads in the following order.

### Power Lead

If your car has a radio or is pre-wired for one :  
Cut the connector wires one at a time from the plug (leaving the leads as long as possible) so that you can work with individual leads.



Turn the ignition on to the accessory position, and ground one lead of the test bulb to the chassis.

Touch the other lead of the test bulb to each of the exposed wires from the cut radio connector plug. Touch one wire at a time until you find the outlet that causes the test bulb to light.

Now turn the ignition off and then on. If the bulb also turns off and on, that outlet is the car power lead.

If your car is not wired for an audio unit :  
Go to the fuse block and find the fuse port for radio (RADIO), accessory (ACC), or ignition (IGN).

### Battery Lead

If your stereo unit has a yellow lead, you will need to locate the car's battery lead. Otherwise you may ignore this procedure. (The yellow battery lead provides continuous power to maintain a clock, memory storage, or other function.)

If your car has a radio or is pre-wired for one:  
With the ignition and headlights off, identify the car battery lead by grounding one lead of the test bulb to the chassis and checking the remaining exposed wires from the cut radio connector plug.

If your car is not wired for an audio unit :  
Go to the fuse block and find the fuse port for the battery, usually marked BAT.

### Antenna Motor

If your car is equipped with an automatic power antenna, identify the car motor antenna lead by connecting one bulb tester lead to the car battery lead and touching the remaining exposed wires from the cut radio connector plug one at a time. You will hear the antenna motor activate when you touch the correct wire.

### Antenna

The antenna lead is a thick, black wire with a metal plug at the end.

# Installation Guide (continued)

## Connect All Leads

Now that you have identified all the wires in the car, you're ready to begin connecting them to the stereo unit wires. The connection diagram (→ Page 38) shows the proper connections and color coding of the leads.

We strongly recommend that you test the unit before making a final installation.

You can set the unit on the floor and make temporary connections to test the unit. Use electrical tape to cover all exposed wires.

**Important:** Connect the red power lead last, after you have made and insulated all other connections.

### Ground

Connect the black ground lead of the power connector to the metal car chassis.

### Motor Antenna

Connect the car motor antenna lead to the blue motor antenna relay control lead.

### Battery

Connect the yellow battery lead to the correct radio wire or to the battery fuse port on the fuse block.

### Antenna

Connect the antenna by plugging the antenna lead into the antenna receptacle.

### Equipment

Connect any optional equipment such as an amplifier, according to the instructions furnished with the equipment. Leave about 12 inches (30 cm) of distance between the speaker cords/amplifier unit and the antenna/antenna extension cord. Read the operating and installation instructions of any equipment you will connect to this unit.

### Power

Connect the red power lead to the correct car radio wire or to the appropriate fuse port on the fuse block.

If the stereo unit functions properly with all these connections made, disconnect the wires and proceed to the final installation.

## Final Installation

### Lead Connections

Connect all wires, making sure that each connection is insulated and secure. Bundle all loose wires and fasten them with tape so they won't fall down later. Now insert the stereo unit into the mounting collar.

Congratulations! After making a few final checks, you're ready to enjoy your new auto stereo system.

## Final Checks

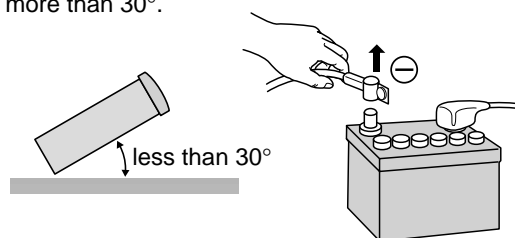
1. Make sure that all wires are properly connected and insulated.
2. Make sure that the stereo unit is securely held in the mounting collar.
3. Turn on the ignition to check the unit for proper operation.

If you have difficulties, consult your nearest authorized professional installer for assistance.

## Precautions

- We strongly recommend that you wear gloves for installation work to protect yourself from injuries.
- When bending the mounting tab of the mounting collar with a screwdriver, be careful not to injure your hands and fingers.

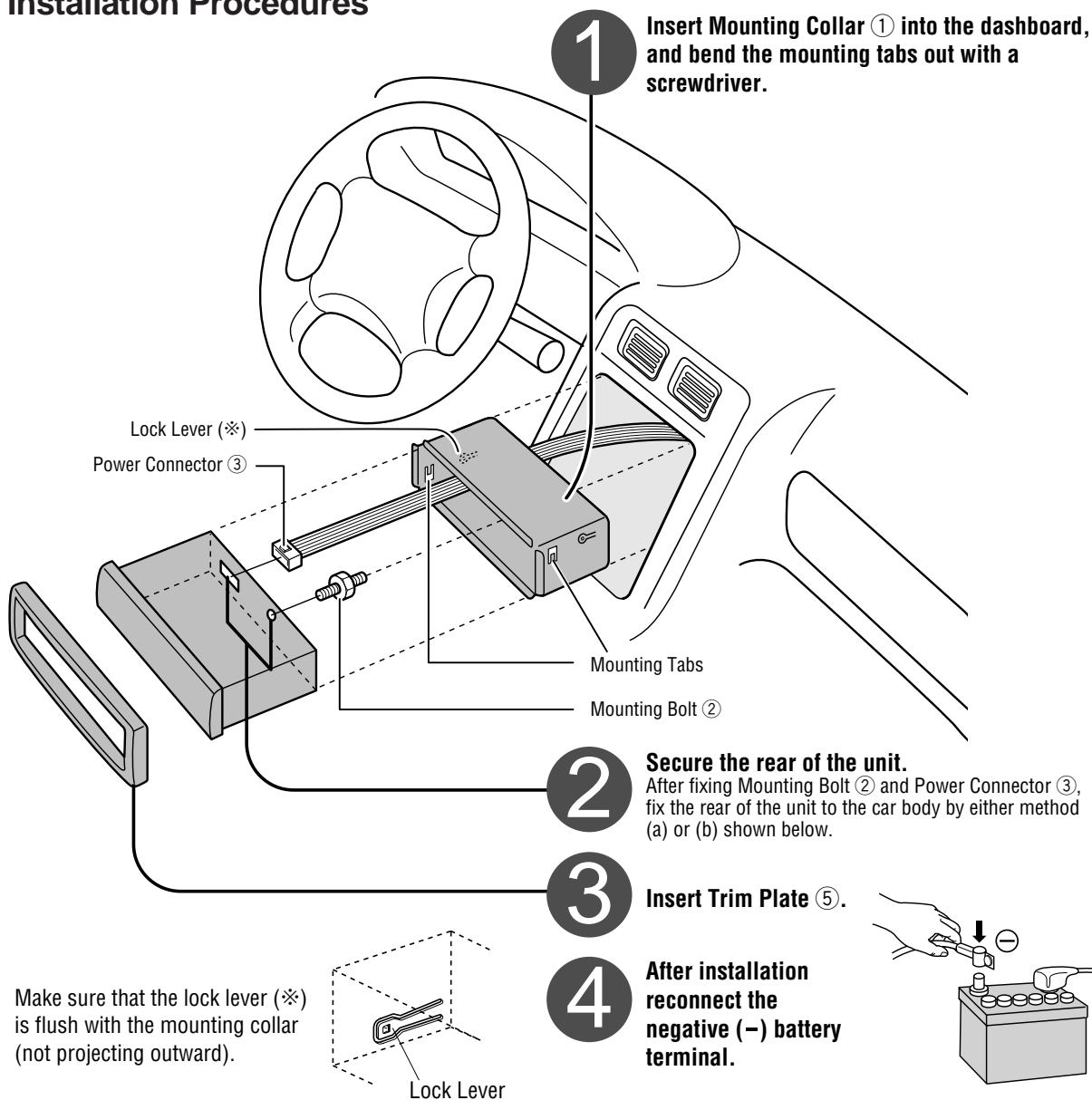
- Disconnect the cable from the negative (-) battery terminal (see caution below).
- Unit should be installed in a horizontal position with the front end up at a convenient angle, but not more than 30°.



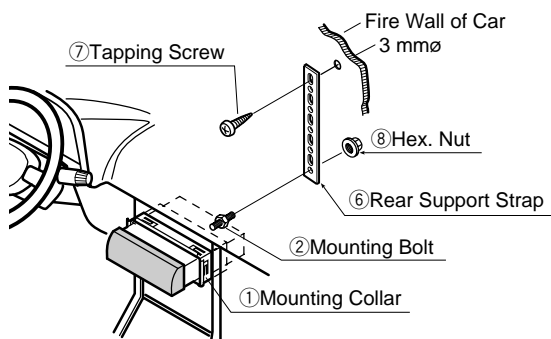
**Caution :** Do not disconnect the battery terminals of a car with trip or navigational computer since all user settings stored in memory will be lost. Instead take extra care with installing the unit to prevent shorts.



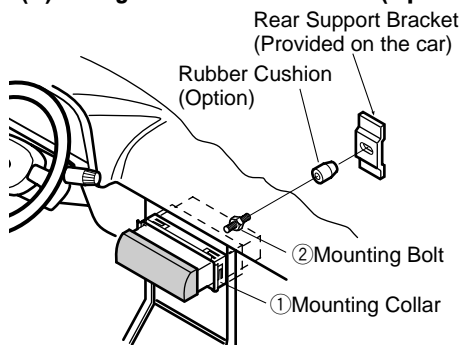
# Installation Procedures



## (a) Using the Rear Support Strap ⑥



## (b) Using the Rubber Cushion (Option)



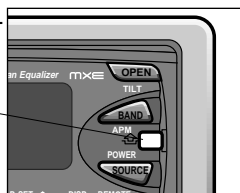
# Installation Guide (continued)

## To Remove the Unit

1 Remove the removable face plate.

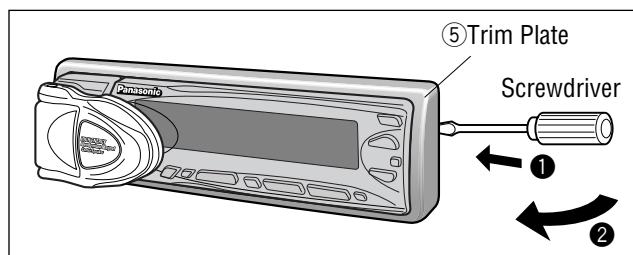
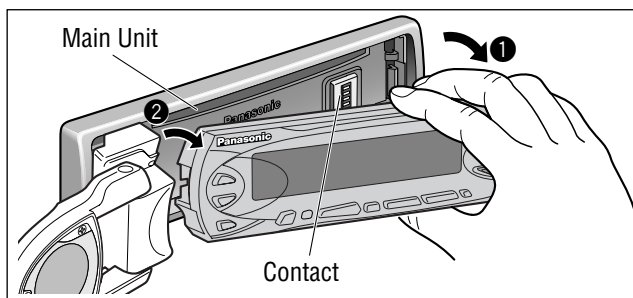
(a) Switch off the power of the unit.

(b) Press the release button.

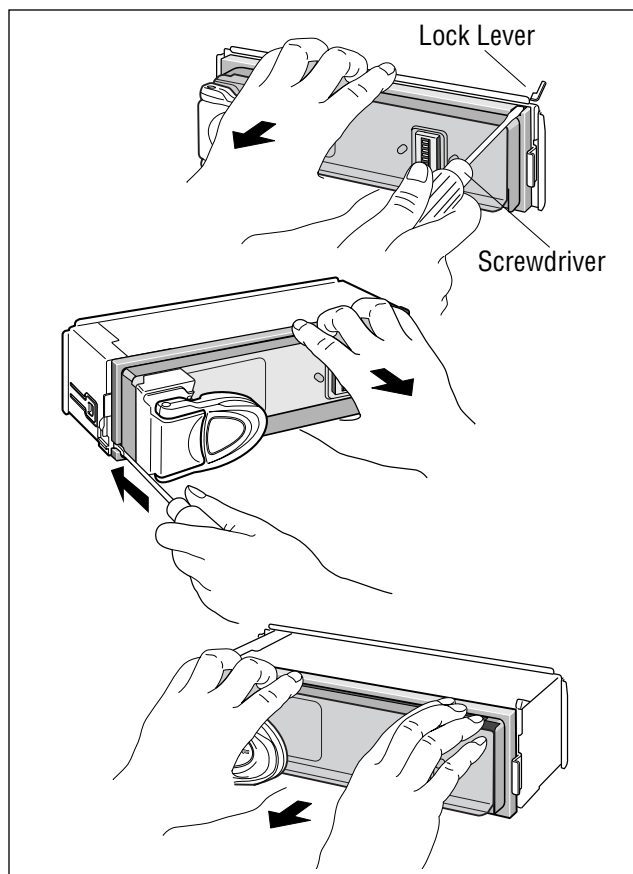


(c) Pull on the right side of the unit.

2 Remove the trim plate ⑤ with a screwdriver.



3 Pull out the unit while pushing down the lock lever with a screwdriver.



4 Remove the unit pulling with both hands.

### Cautions:

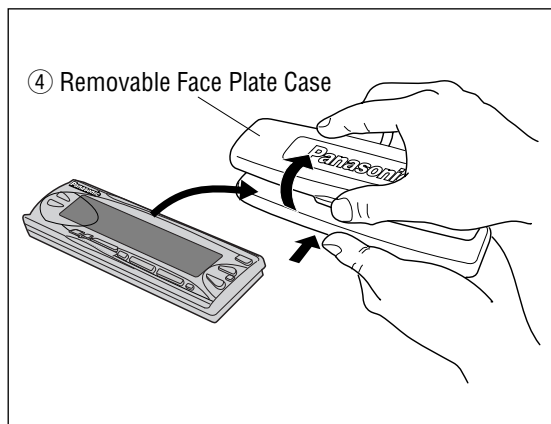
- Do not touch the contacts on the face plate or on the main unit, since this may result in poor electrical contacts.
- If dirt or other foreign substances get on the contacts, wipe them off with clean and dry cloth.

# Anti-Theft System

This unit is equipped with a removable face plate. Removing this face plate makes the radio totally inoperable. The security indicator will blink.

## Place Removable Face Plate into Case

- ❶ Switch off the power of the unit.
- ❷ Remove the removable face plate.  
(⇒ Page 36)
- ❸ Gently press the bottom of the case and open the cover. Place the face plate into the case and take it with you when you leave the car.

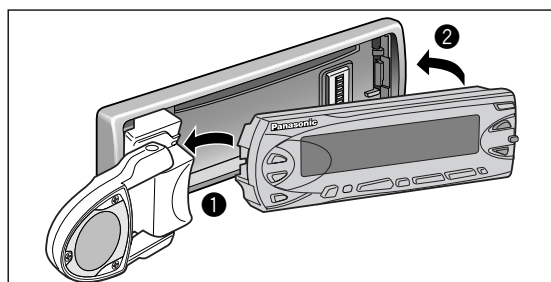


### Cautions:

- This face plate is not water-proof. Do not expose it to water or excessive moisture.
- Do not remove the face plate while driving your car.
- Do not place the face plate on the dashboard or nearby areas where the temperature rises to high levels.

## Install Removable Face Plate

- ❶ Slide the left side of the removable face plate in place.
- ❷ Press the right end of removable face plate until “click” is heard.



## Security Indicator

The security indicator blinks when the removable face plate is removed from the unit. (⇒ Page 30.)

- ❶ Press and hold [SEL]. For more than 2 seconds to change to function control mode.
  - ❷ Press [SEL] to select “S-LED SEL”.
- S-LED SEL**
- ❸ Press [➤] to turn the security indicator (S-LED) on.  
( [➤] : off)

Security Indicator

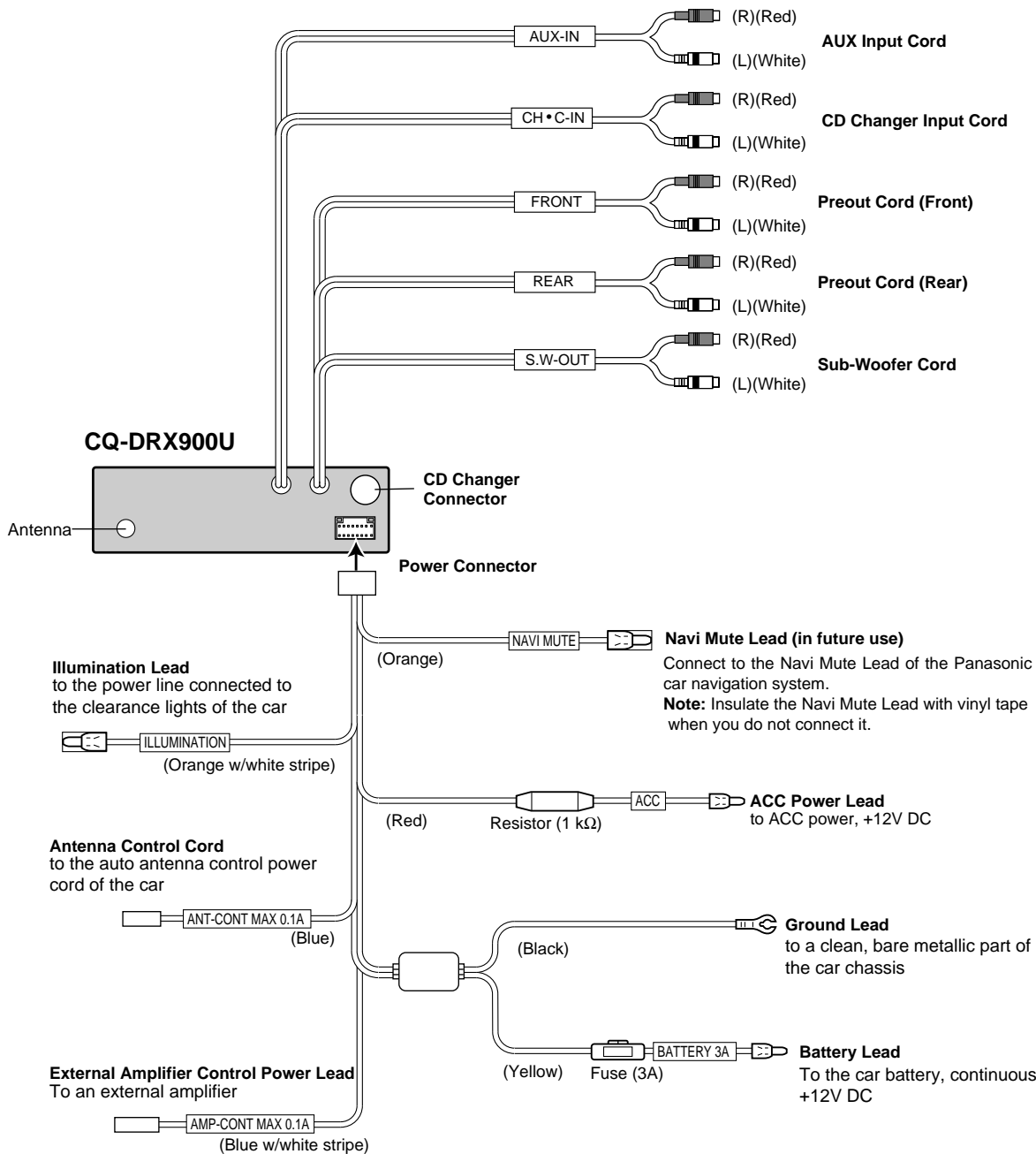
Display	Security Indicator
<b>S-LED ON</b>	Blinks
<b>S-LED OFF</b>	OFF

# Electrical Connections

- For wiring, carefully read the Operating Instructions for the devices connected.
  - Consult the store where you purchased the unit for the wide range of speakers available there.
- Remember, if your car has a drive computer or a navigation computer, the data of its memory may be erased when the battery terminals are disconnected.

## Supplied Hardware

Item	Q'ty
Power Connector	1

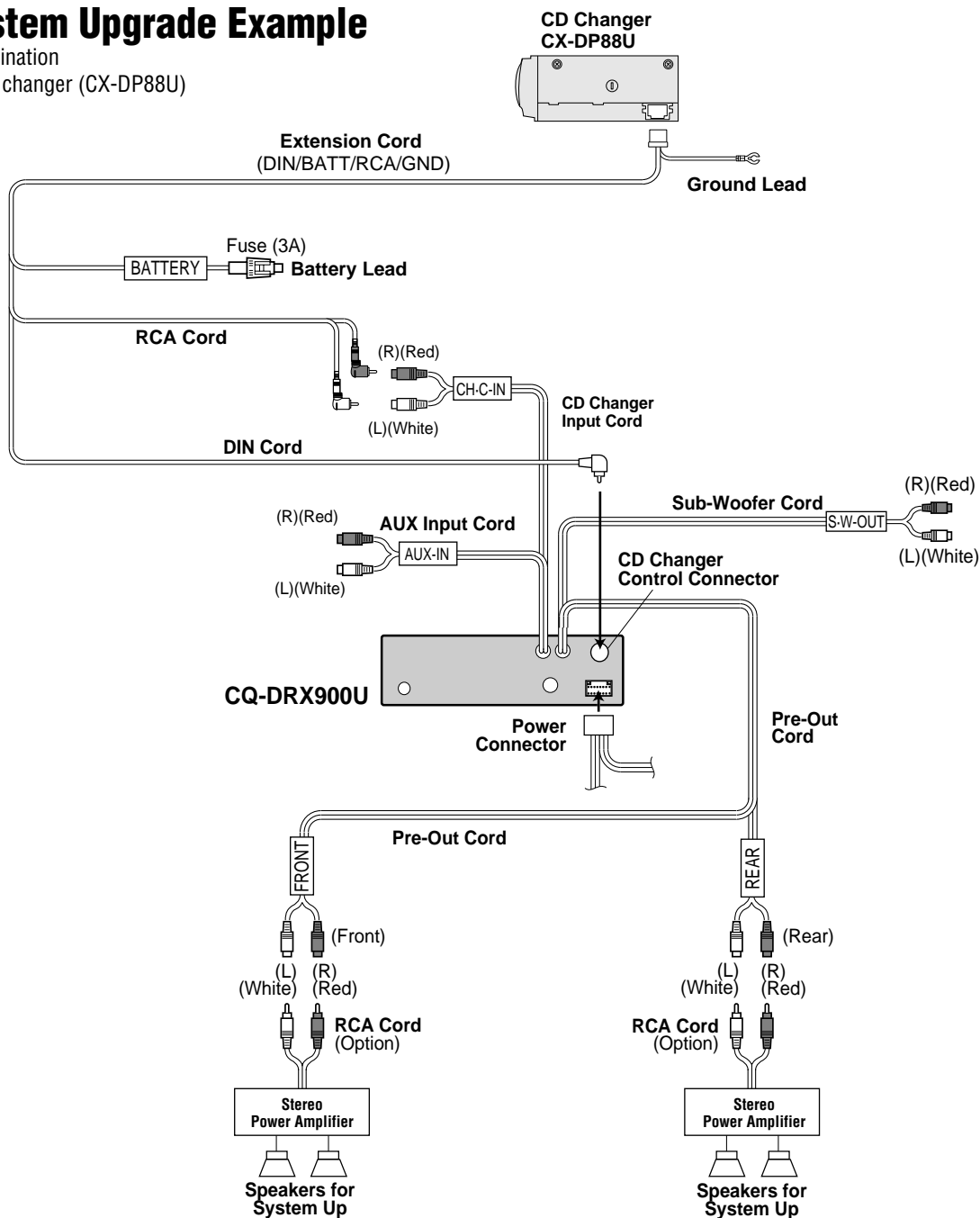


**Note:** If your car does not have a power line connected to the clearance lights of the car, leave the illumination lead unconnected.

# System Upgrade Example

Combination

- CD changer (CX-DP88U)



## Caution:

- Ask a qualified service person for installation and wiring.  
The installation and wiring of this unit requires special skills and experience. For safety, ask the store where you purchased it for its installation and wiring.
- Do Not Disassemble or Modify.  
Do not disassemble or modify the unit. Do not remove the coverings from the ends of cables and wires to take power for other devices. Because it may generate smoke or fire, and cause electric shock or trouble.

# Troubleshooting

## Preliminary Steps

Check and take steps as described in the tables below.

## If You Suspect Something Wrong

Immediately switch power off.  
Disconnect the power cable and check that there is neither smoke nor heat from the unit before asking for repairs. Never try to repair the unit yourself because it is dangerous to do so.

**Caution:**  
Do Not Use the Unit If It Malfunctions or Is Something Wrong.  
Do not use the unit in abnormal condition, for example, without sound, or with smoke or foul smell, can cause ignition or electric shock. Immediately stop using it and call the store where you purchased it.

### Common

Trouble	Cause	Step
No power	Car's engine switch is not on.	Turn your car's ignition switch to ACC or ON.
	Cables are not correctly connected.	Connect cables correctly.
	Battery cable is not correctly connected.	Connect the battery cable to the terminal that is always live.
	Accessory cable is not correctly connected.	Connect the accessory cable to your car's ACC source.
	Grounding wire is not correctly connected.	Connect the grounding wire to a metal part of the car.
	Fuse is burnt.	Call the store where you purchased the unit, or your nearest service station (see the attached sheet) and ask for fuse replacement.
No sound	Mute is set to ON	Set it to OFF.
	Cables are not correctly connected.	Connect cables correctly.
	External-mute cable is not correctly connected (The word MUTING is shown.)	Connect the Navi-mute cable correctly.
	Condensation (dew)	Wait for a while before use.
Buttons unusable	Spectrum analyzer is in demo mode.	Press <b>[DISP]</b> to cancel demo mode.

## ■ Panel

Trouble	Cause	Step
Panel angle unadjustable	Panel angle is set fixed.	Change tilt setting to ON.

## ■ Radio

Trouble	Cause	Step
Much noise in FM stereo and monaural broadcasts	Station is too far, or signals are too weak.	Select other stations of higher signal level.
Preset station is reset.	Battery cable is not correctly connected.	Connect the battery cable to the terminal that is always live.

## ■ CD

Trouble	Cause	Step
CD is inside but no sound	CD is upside down.	Place CD in the correction direction, the label side up.
	CD is dirty.	Clean CD, referring to the section on Care of Discs.
CD sound skips, tone quality is low.	CD is dirty.	Clean CD, referring to the section on Care of Discs.
Sound skips due to vibration.	Mounting angle is over 30 degrees.	Adjust mounting angle to less than 30 degrees.
	Instable mounting	Mount the unit securely with the mounting parts, referring to the section on Installation.
CD is not ejected.	<ul style="list-style-type: none"> <li>• CD is defective.</li> <li>• Mechanical trouble</li> </ul>	Open the panel and press [▲]. If failure persists, press the reset switch. If normal operation is not restored yet, call the store where you purchased the unit or the nearest service station to ask for repairs.

# Troubleshooting (continued)

## ■ Sound Setting

Trouble	Cause	Step
No sound from left, right, front, or rear speaker	Left and right balance, or front and rear balance is off on one side.	Adjust BAL/FAD as appropriate.
	Cables are not correctly connected.	Connect the cables correctly.
Left and right sounds are reversed in stereo listening.	The right speaker wire is connected to the left speaker and the left speaker wire to the right speaker.	Connect the speaker wires to the correct ones.
No sound from center speaker	Center speaker is closed.	Open the center speaker.
	Center Speaker volume is set to $-\infty$ .	Set Center speaker volume to other than $-\infty$ .
Only bass or monaural sound from rear speaker	SBC-SW is set to ON.	Set SBC-SW to OFF.
No sound from rear speaker preout (rear)	SBC-SW is set to ON and DDBC volume to $-\infty$ .	Set DDBC volume to other than $-\infty$ .

## ■ Remote Control

Trouble	Cause	Step
Buttons are invalid for operation.	Battery polarities (+) (–) are reversed.	Insert the batteries correctly.
	Wrong batteries	Check the batteries.
	Batteries have run down.	Replace the batteries.
	Remote control is in the wrong direction.	Direct the remote controller at REMOTE (sensor) on the panel.



# Error Display Messages

## CD

Example of Display	Cause	Operation	Check/Step
<i>CD /E1 /</i>	Disc is dirty, or is upside down.	May be automatically ejected.	Check disc.
<i>CD /E2 /</i>	Disc has scars.		
<i>CD /E3 /</i>	No operation by some cause	—	Open the panel and press [▲]. If failure persists, press the reset switch. If normal operation is not restored yet, call and ask for repairs.
<i>⊖ PLS EJECT</i>	Action was taken to start playing before disc is fully ejected.	—	Open the panel and press [▲].

## Changer

Example of Display	Cause	Operation	Check/Step
<i>CD CH /E1 /</i>	Disc is dirty, or is upside down.	May be automatically ejected.	Check disc.
<i>CD CH /E2 /</i>	Disc has scars.		
<i>CD CH /E3 /</i>	No operation by some cause	—	Open the panel and press [▲]. If failure persists, press the reset switch. If normal operation is not restored yet, call and ask for repairs.
<i>NO DISC</i>	No disc in the changer (magazine)	—	Insert discs into the changer (magazine).

### Notes:

- There may be cases where the disc numbers affected by an error are displayed before E1 and E2.
- Displays and the steps to be taken for errors vary in part from changer to changer. For details, refer to the Operating Instructions for the changer used.

# Troubleshooting (continued)

## Maintenance

Your product is designed and manufactured to ensure a minimum of maintenance. Use a soft cloth for routine exterior cleaning. Never use benzine, thinner or other solvents.

## Product Servicing

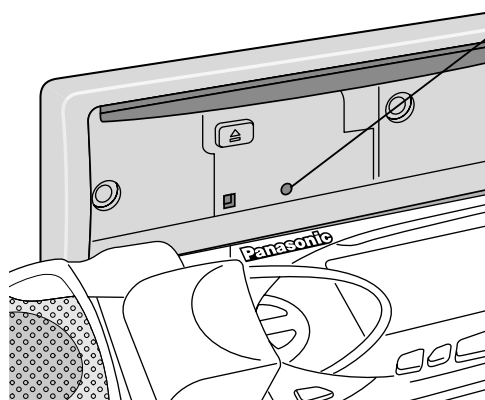
If the suggestions in the charts don't solve the problem, we recommend that you take it to your nearest authorized Panasonic Servicenter. The product should be serviced only by a qualified technician.

## Replace the Fuse

Use fuses of the same specified rating (3 amps). Using different substitutes or fuses with higher ratings, or connecting the product directly without a fuse, could cause fire or damage to the stereo unit.

**If the replacement fuse fails, contact your nearest Panasonic Servicenter for service.**

## Reset switch



### Reset switch

Insert a hard slender stick into the hole and push the switch.

- The unit returns to the default state when the trouble is reset. Remember, the data and settings stored in the memory are deleted.

### Important

Push the switch only when the unit fails to operate with any buttons.

If the panel cannot be opened, or if the unit fails to return to normal condition, call the nearest service station and ask for repairs.

## Care of the Unit

### Cleaning this unit

- Use a dry, soft cloth to wipe.

### Caution on cleaning

Never use solvents such as benzene, thinner as they may mar the surface of the unit.

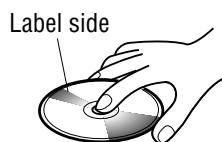
## Notes on CD

**ONLY USE DISCS CARRYING THE LABEL**



### How to hold the CD

- Do not touch the underside of the disc.
- Do not make scratches on the disc.
- Do not bend disc.
- When not in use, keep CD in the case.



### Do not use irregularly shaped CDs

### Do not leave discs in the following places:

- Direct sunlight
- Near car heaters
- Dirty, dusty and damp areas
- Seats and dashboards



Heart-shaped



Octagoned

### Disc Cleaning

Use a dry, soft cloth to wipe from the center outward.

<Right>



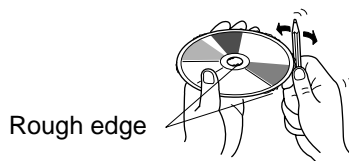
<Wrong>

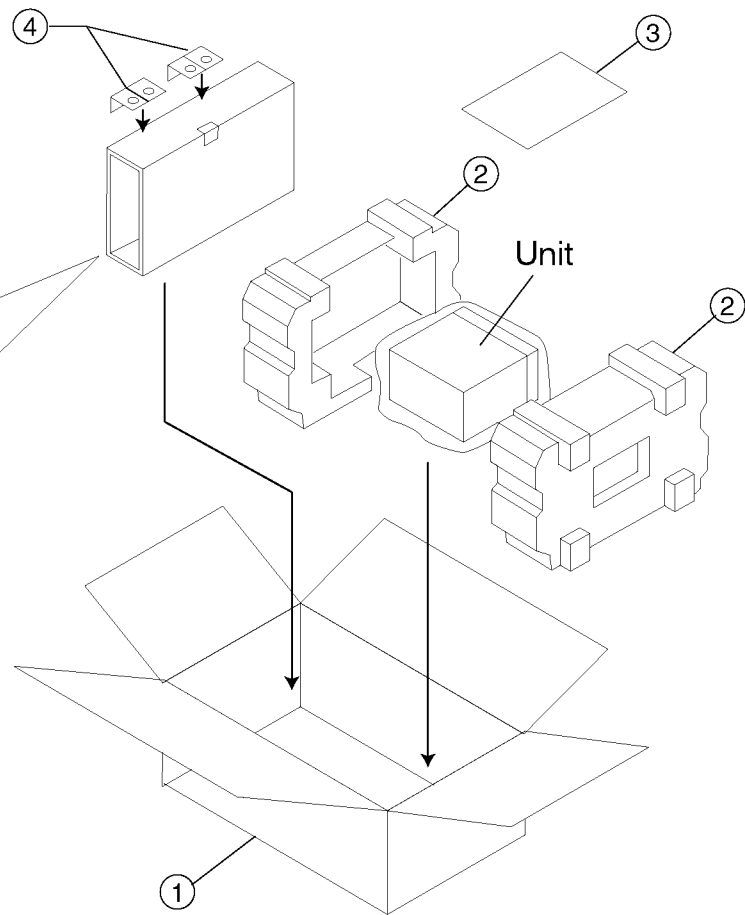
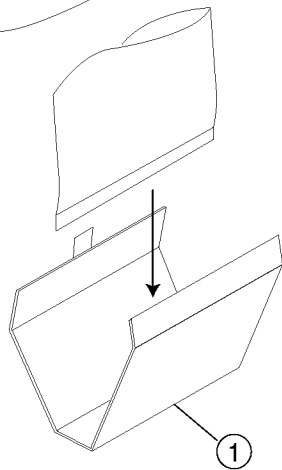
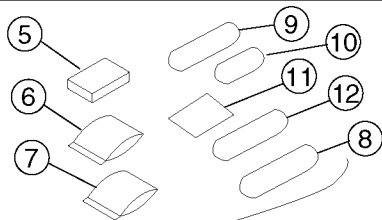


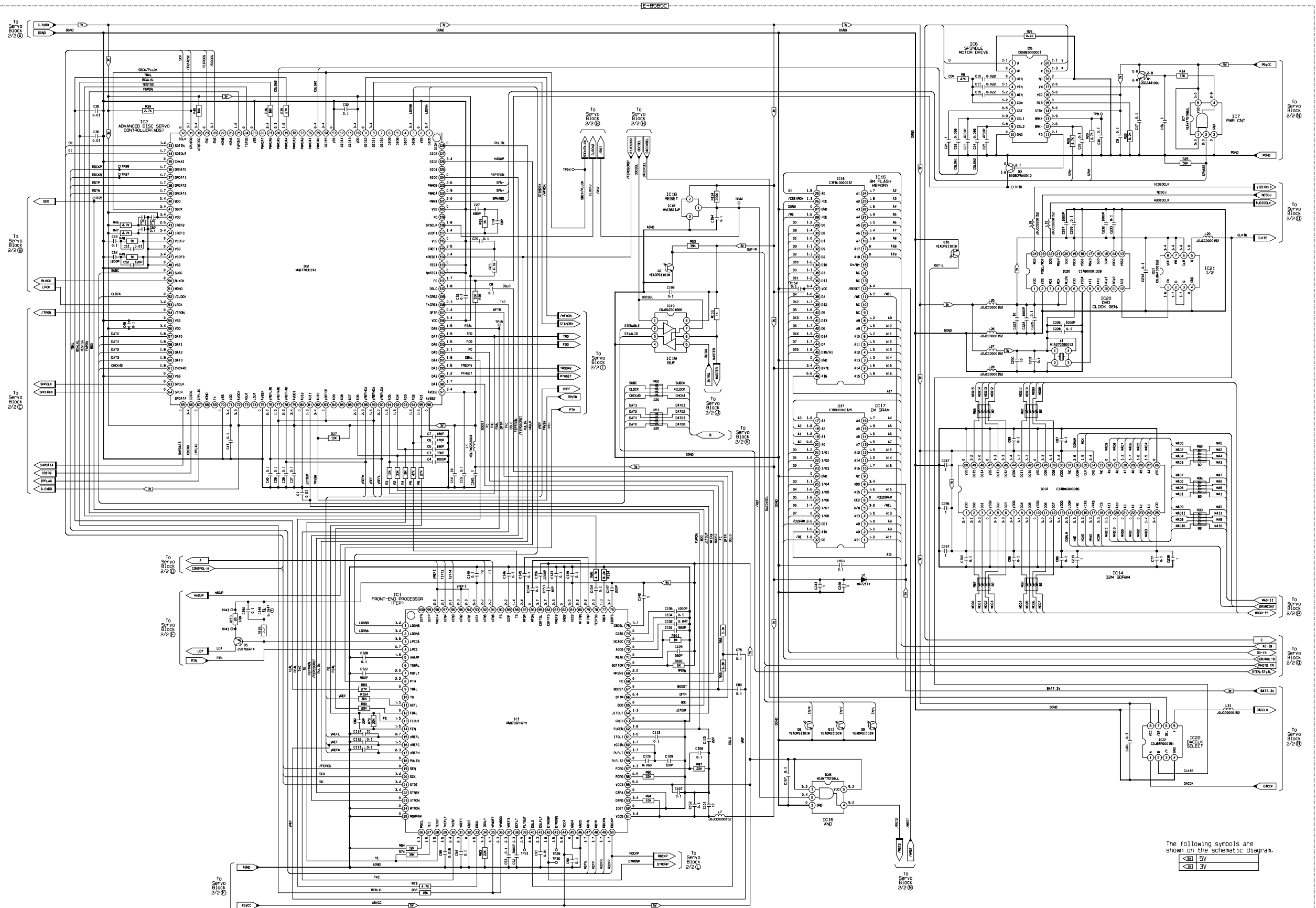
### Caution on New Discs

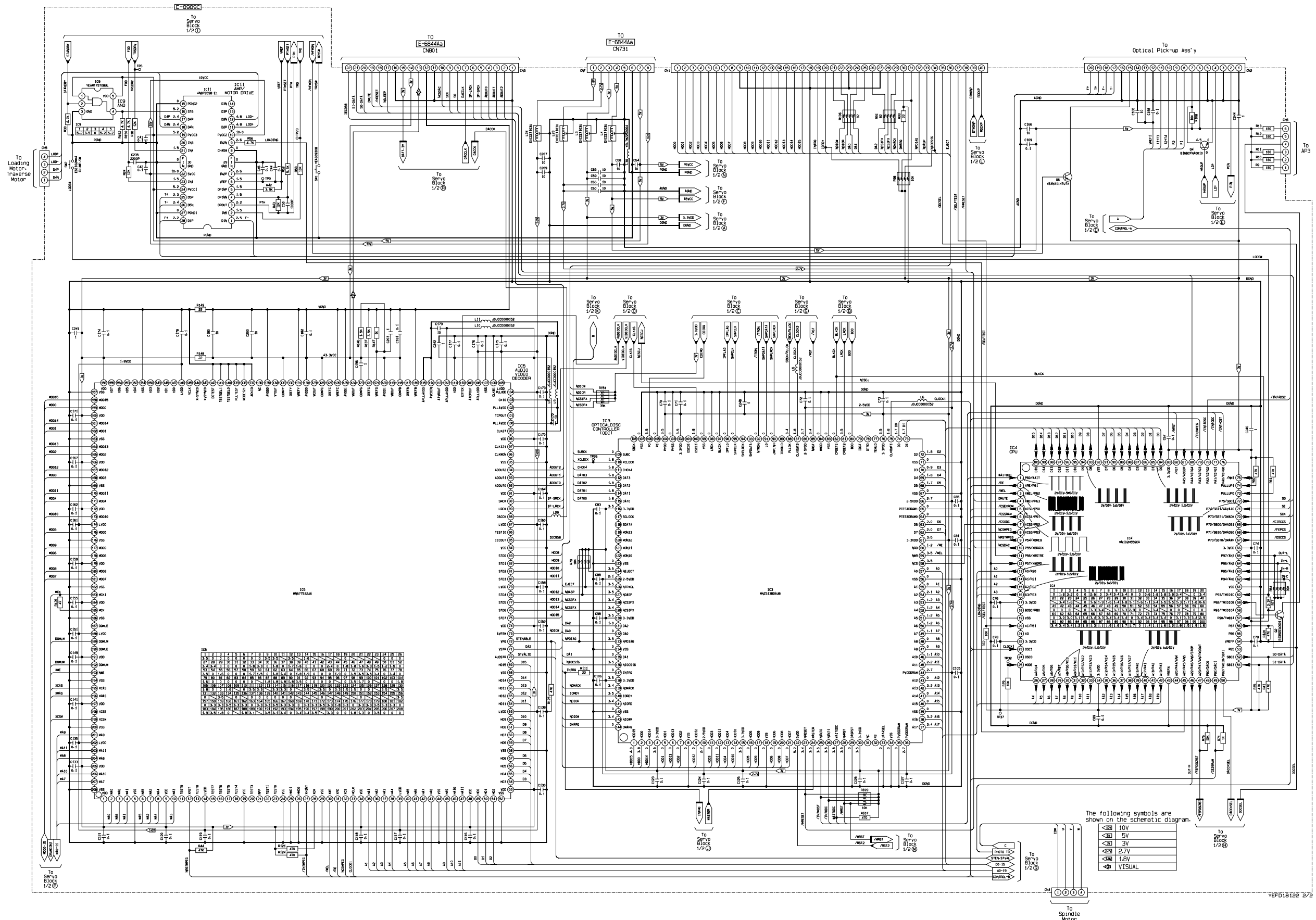
A new disc may have rough edges on its inner and outer perimeter. These may cause malfunction.

Remove the rough edges using a pencil, etc.












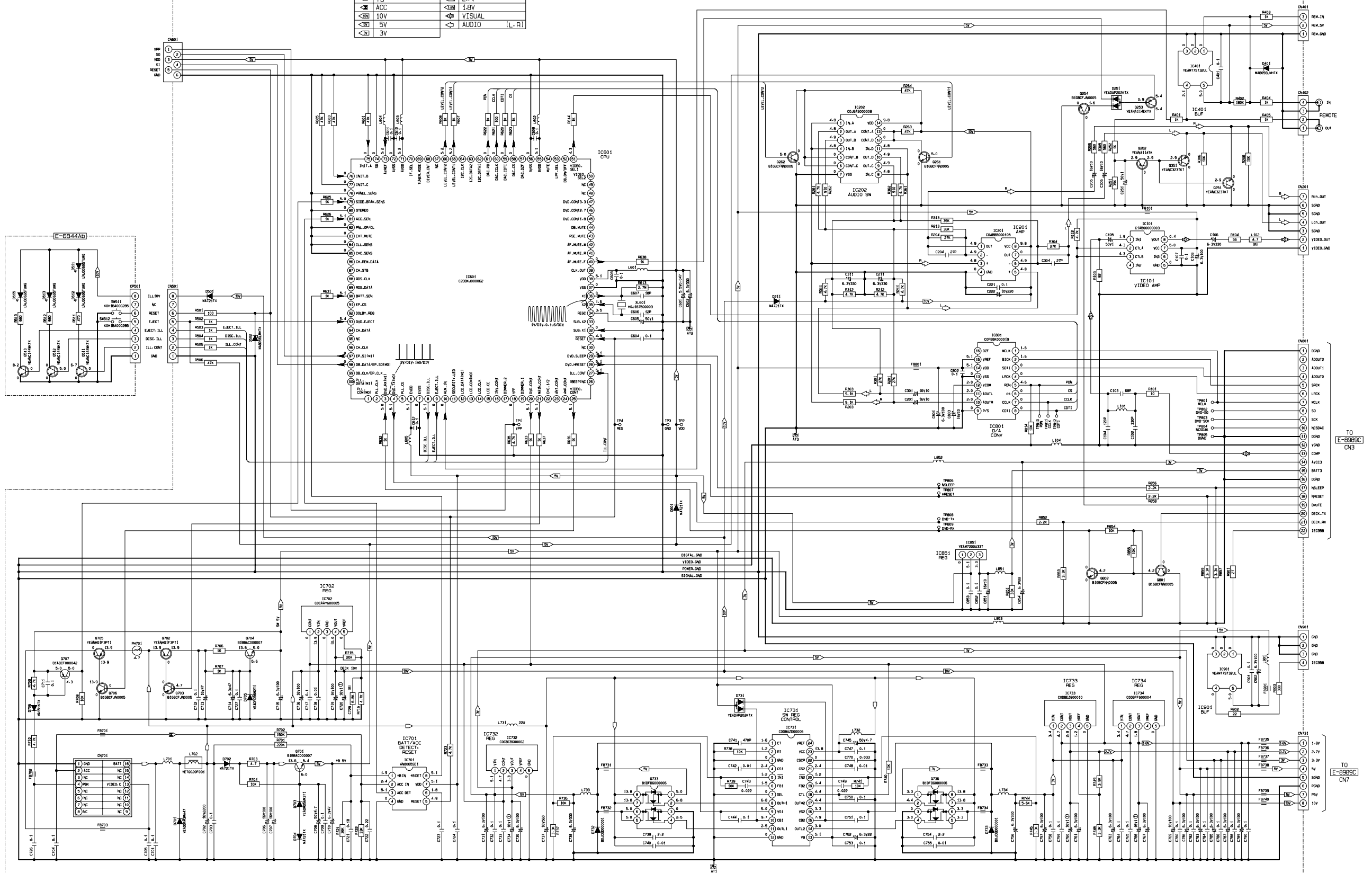


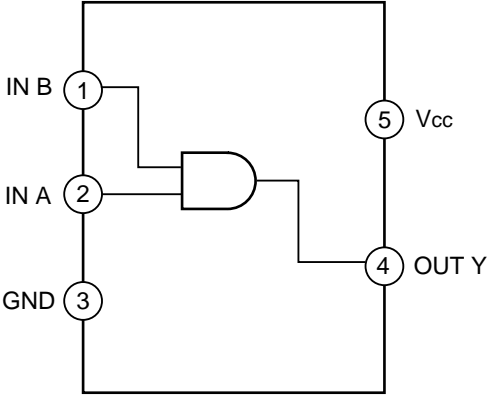




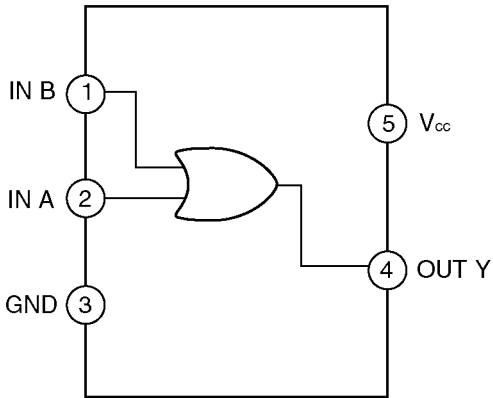
The following symbols are shown on the schematic diagram.

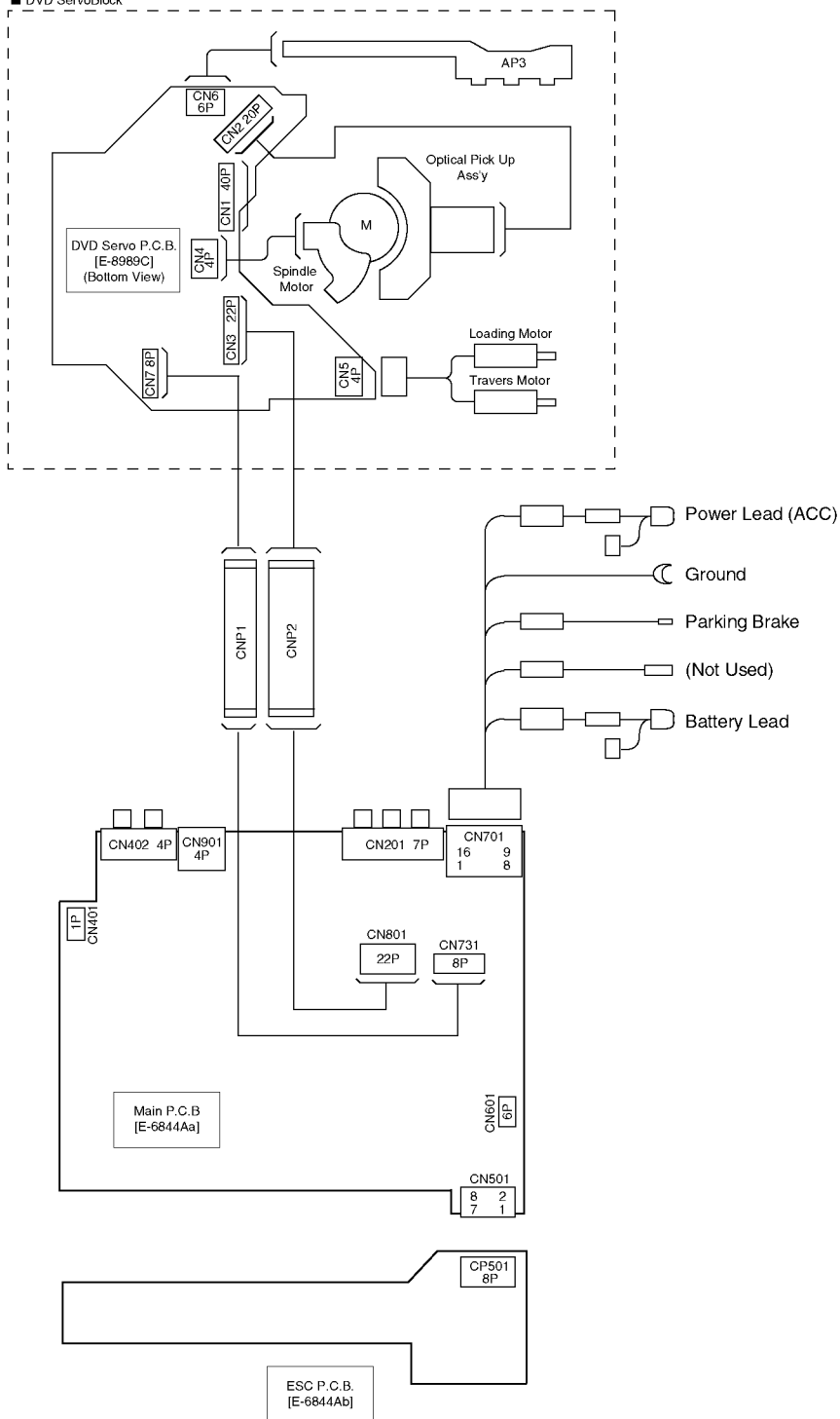
	+B		2.7V
	ACC		1.8V
	10V		VISUAL
	5V		AUDIO (L.R)
	3V		



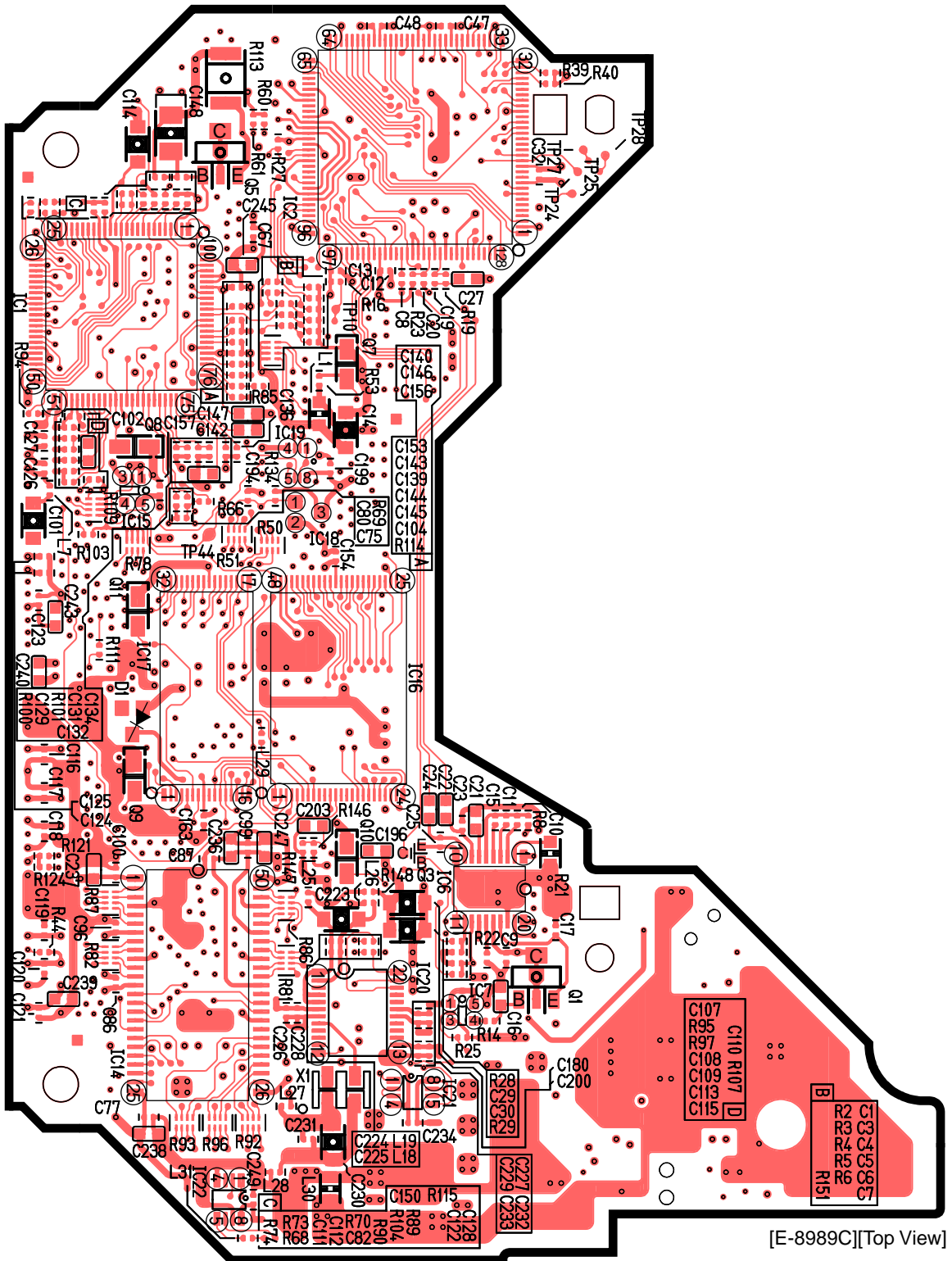




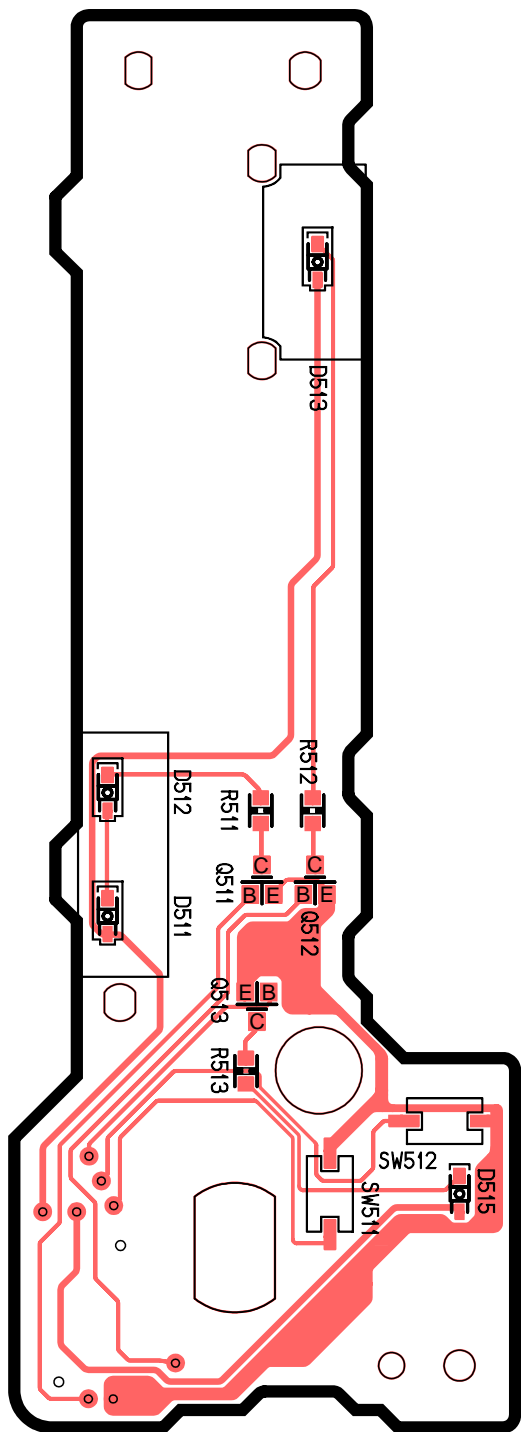




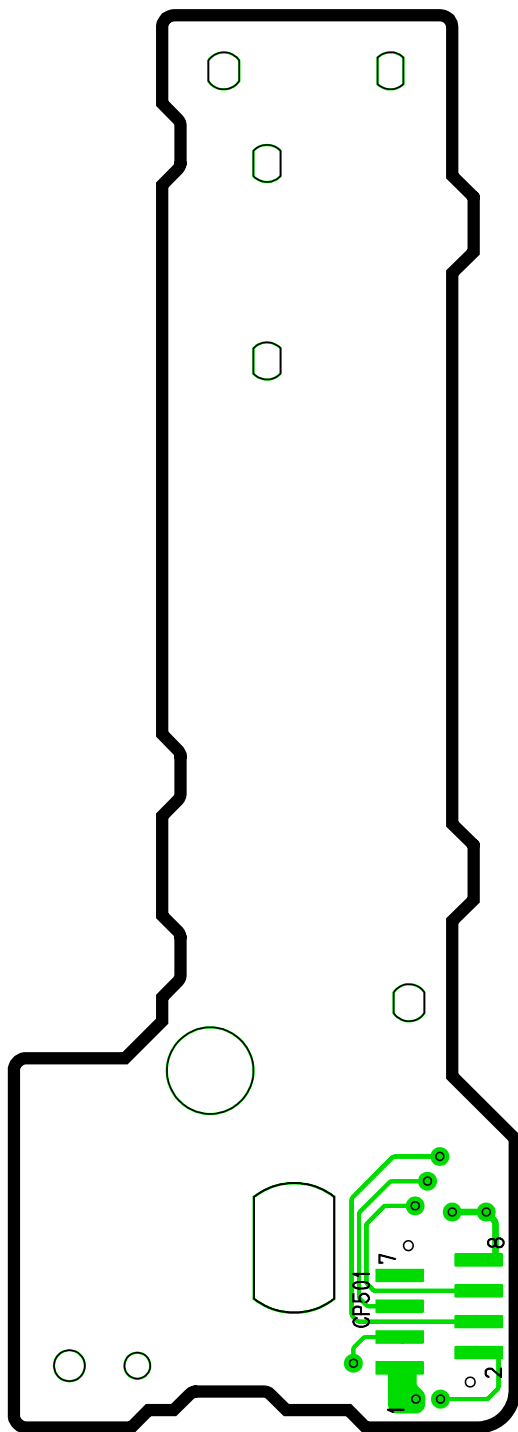




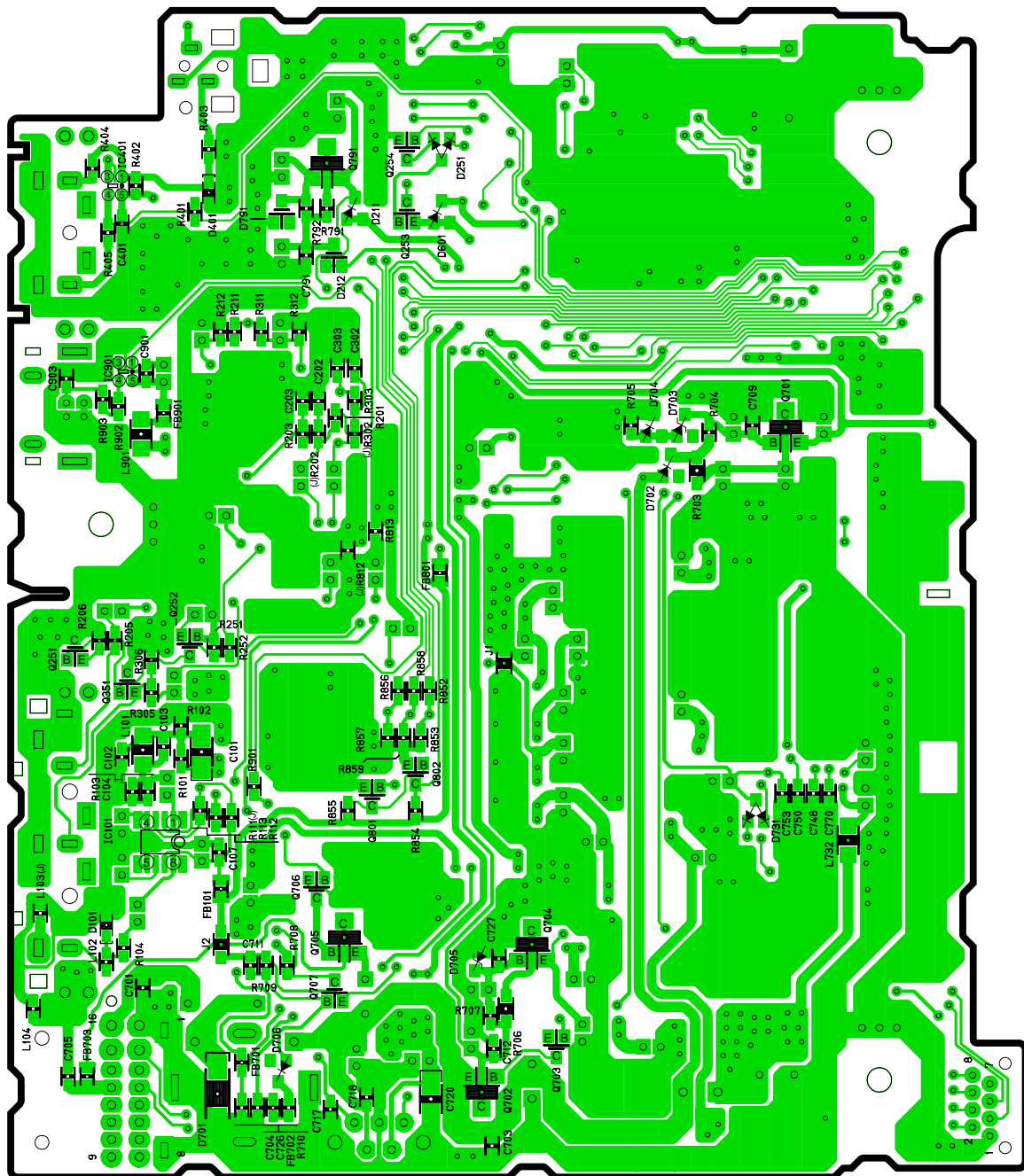
[E-8989C][Top View]



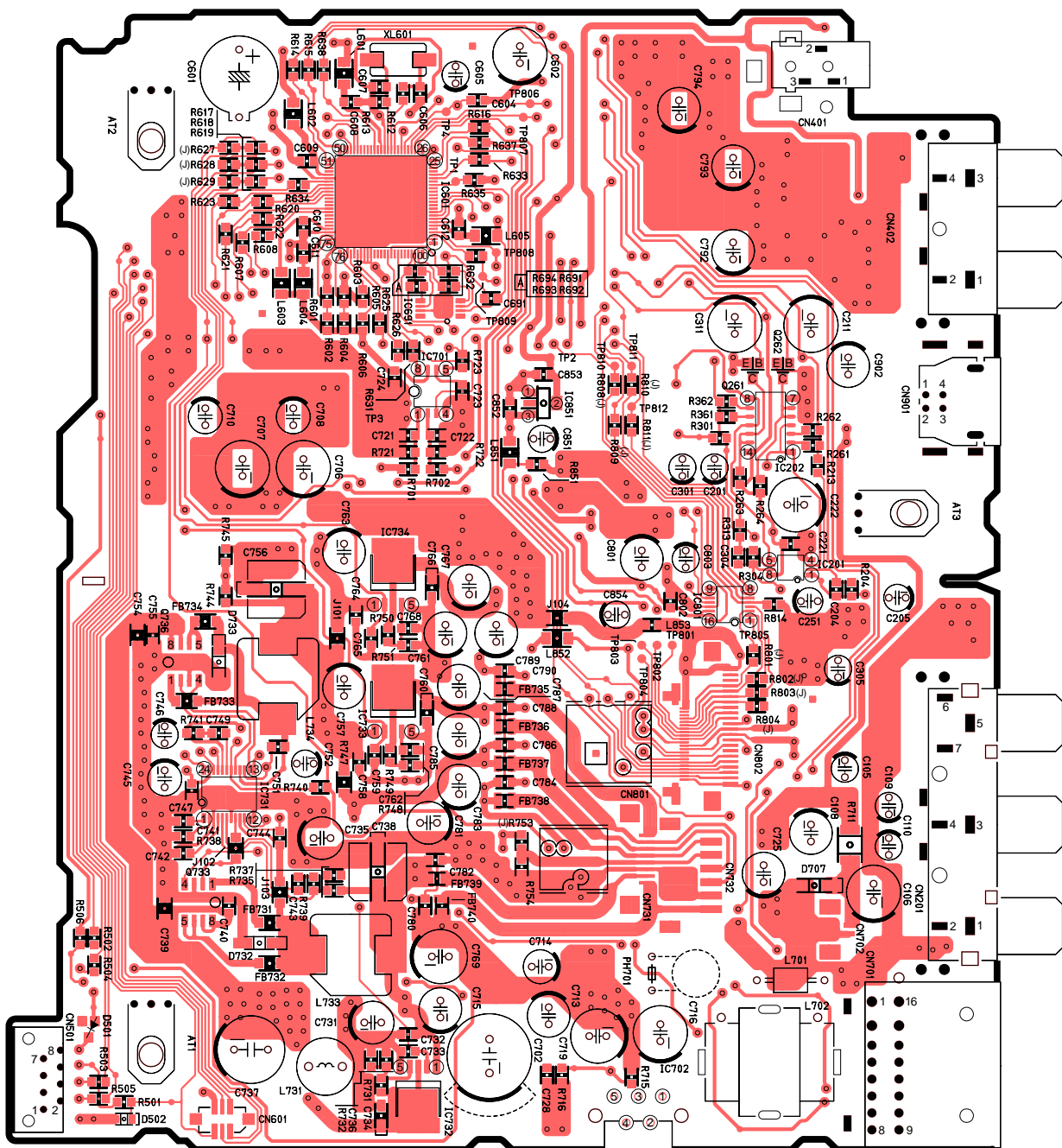
[E-6844Ab][Top View]



[E-6844Ab][Bottom View]



[E-6844Aa][Bottom View]



[E-6844Aa][Top View]