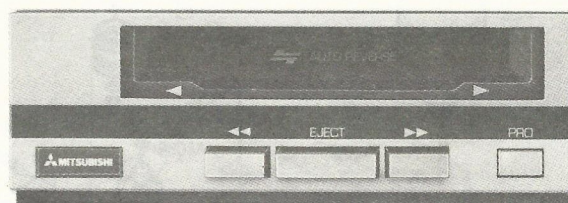




SERVICE MANUAL

CASSETTE TAPE PLAYER

MODEL : CX-85F, FY MB414316, MB414320
: CX-86F, FY MB414317, MB414321

**CX-85F****CX-86F****SPECIFICATIONS**

- Power Source: 13.2V \pm 2.4V
- Output Voltage: 45mV (RL = 22 k Ω)
- Current Consumption: Less than 0.4A
(ACC-PLAY)
- Wow and Flutter: Less than 0.3% (NAB)
- S/N: More than 45dB
- Dimensions: 160(W) x 56(H) x 170(D)mm
- Weight: 1.55 kg (CX-85F, FY)
1.53 kg (CX-86F, FY)

FEATURES

- Program Switch for track changing whenever you like.
- Automatic tape reverse.
- DOLBY, METAL Switch control. (CX-85F, FY only)

MITSUBISHI ELECTRIC AUSTRALIA PTY. LTD.**73-75 EPPING ROAD NORTH RYDE N.S.W. 2113 SYDNEY AUSTRALIA**

1. HEAD AZIMUTH ADJUSTMENT (CX-86F, FY only)

Test Tape	Procedures
TEAC MTT-113C (8kHz, -10dB)	Adjust for maximum output then seal screw with paint.

2. OUTPUT LEVEL ADJUSTMENT (CX-86F, FY only)

Test Tape	Procedures
TEAC MTT-118 (1kHz, -10dB)	Adjust for $45\text{mV} \pm 2\text{dB}$ by VR301 (L-CH), VR401 (R-CH) (Fig. 1, 2)

TAPE OUTPUT LEVEL ALIGNMENT POINT

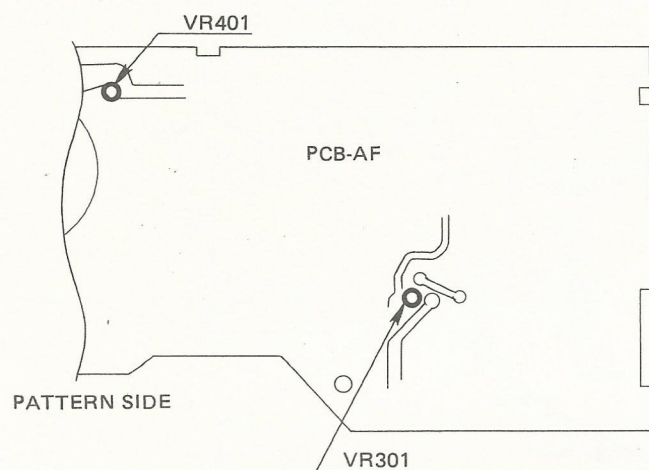
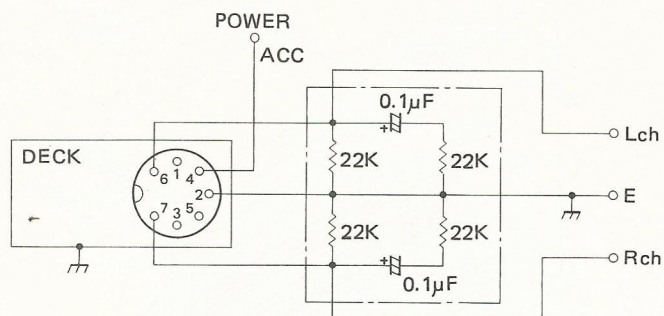


Fig. 1



Note: Connect E (GND) Line at first before turn on Acc.

Fig. 2

1. HEAD AZIMUTH ADJUSTMENT (CX-85F, FY only)

Test Tape	Procedures
TEAC MTT-114 (10kHz, -10dB)	Adjust for maximum output then seal screw with paint.

2. DOLBY LEVEL ADJUSTMENT (CX-85F, FY only)

Test Tape	Procedures
TEAC MTT-150	Adjust for $775 \pm 1\text{dB}$ by VR301 (L-CH), VR401 (R-CH) • METAL SW: OFF • DOLBY SW: OFF (Fig. 3)

DOLBY LEVEL ALIGNMENT POINT

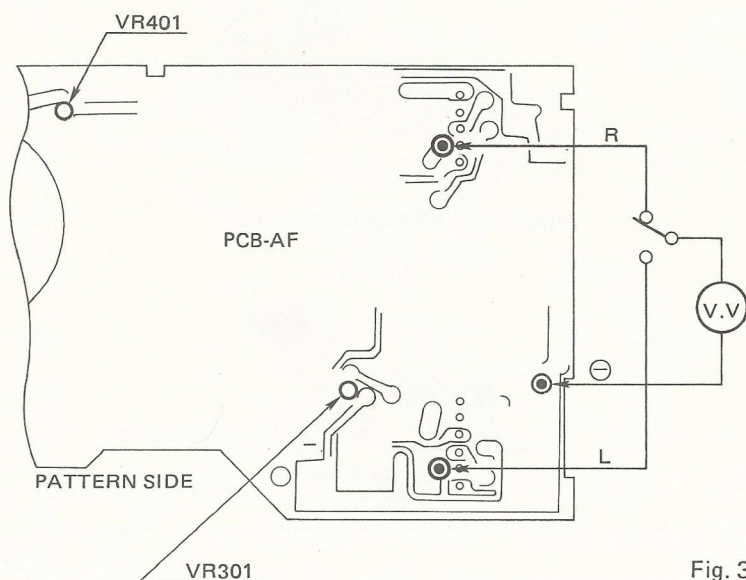
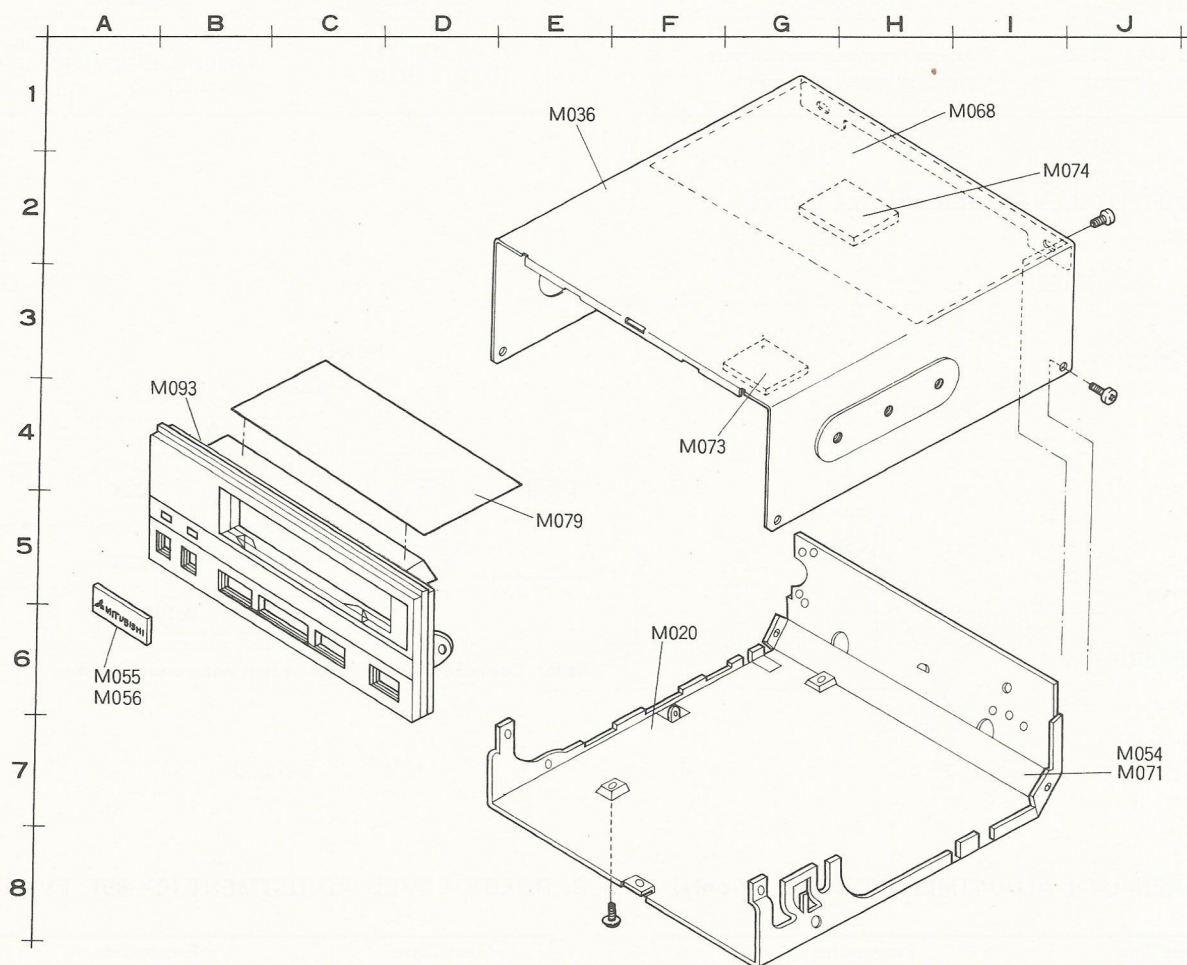


Fig. 3

EXPLODED VIEW

Chassis

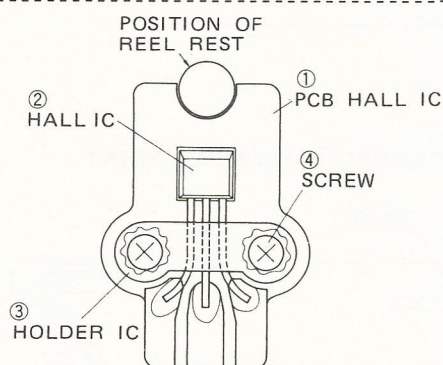


NOTE:

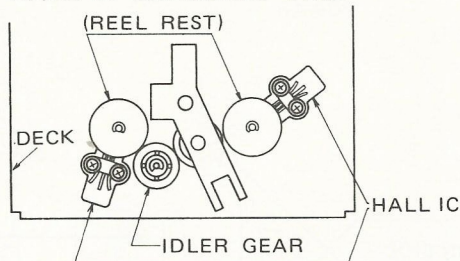
STEPS FOR FIXING HALL IC (Refer to the figure on the right)

This HALL IC is so sensitive that care should be paid particularly when handling its pins.

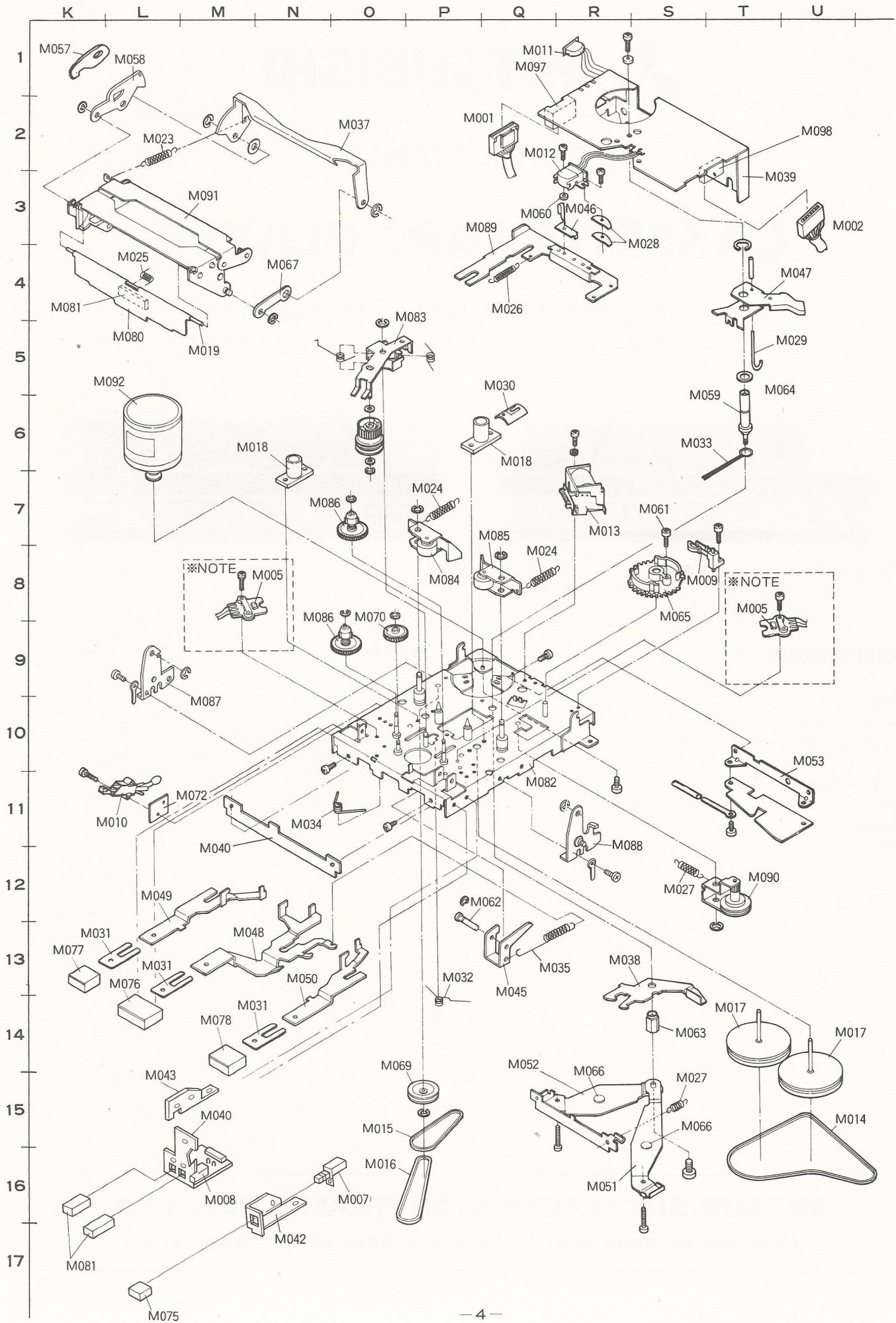
- 1) Set HALL IC on IC board and fix it with 1 IC holder and 2 screws.
- 2) Solder 3 pins of IC firmly on IC board.
- 3) Paint the head of 2 screws.



HALL IC EXPANDED VIEW



Deck



MECHANICAL PARTS LIST

Chassis/Deck

Ref. No.	Part No.	Description	Index
M001	242K03801	LEAD-CONNECTOR-9S	Q-2
M002	242L39608	LEAD-CONNECTOR-9S	U-2
M003	253L01501	LAMP (1)(3)	—
M004	253L02201	LAMP (2)(4)	—
M005	266P79001	HALL-IC	T-8,M-8
M006	431P01306	SW-SLIDE	—
M007	432L02904	SW-PUSH	O-15
M008	432L02905	SW-PUSH (1)(2)	M-16
M009	435L01401	SW-SPRING	T-8
M010	439L00102	SW-SQUELTON	L-11
M011	449L00501	SOCKET-MPX	R-1
M012	460P03105	HEAD	Q-2
M013	479L00503	CLUTCH	R-7
M014	521M00801	BELT-MAIN	U-15
M015	521M02501	BELT-MI	O-15
M016	521M02601	BELT-SI	O-16
M017	524L00802	FLYWHEEL	T-14,U-14
M018	530M01301	METAL-CAPSTAN	N-6,Q-6
M019	531M06005	SHAFT-SHUTTER	M-5
M020	560K13601	BOTTOM-CHASSIS	F-6
M021			
M022			
M023	570M44901	SPRING-EV	L-2
M024	570M16002	SPRING-PR	P-7,Q-8
M025	570M17302	SPRING-SHUTTER	L-4
M026	570M18502	SPRING-EV	Q-4
M027	570M19901	SPRING-EVT	S-15
M028	570M20901	SPRING-HEAD	S-3
M029	570M21001	PIN-SW	U-5
M030	570M24201	SPRING-S	Q-5
M031	570M26801	SPRING-KNOB	K-13
M032	570M26903	SPRING-FF	P-13
M033	570M27001	SPRING-TU	S-6
M034	570M31201	SPRING-SP	N-11
M035	570M37102	SPRING-UP	Q-13
M036	590K39501	UPPER-COVER	E-1
M037	591L01302	EJECTER	O-2
M038	591M11801	TRIGGER	R-13
M039	590L78401	HOLDER-PWB	U-3
M040	591M28702	HOLDER-LEVER	M-12
M041			
M042	592M30701	HOLDER-D	N-17
M043	592M30801	HOLDER-S	L-15
M044			
M045	591M12201	LIFT-LEVER	Q-14
M046	591M12501	LEAD-CLAMPER	R-3
M047	591M28402	CRANK-LEVER	U-2
M048	591M28501	STOP-SLIDE	M-13
M049	591M28601	FF-SLIDE-L	L-12
M050	591M28602	FF-SLIDE-R	N-13
M051	591M36601	BOTTOM-FW	R-16
M052	591M36602	BOTTOM-FW	Q-14
M053	591M40001	BRACKET-PWB	U-10
M054	642M27902	INSULATOR-B (3)(4)	J-7
M055	704L31101	KNOB-INLAY (3)	A-6
M056	704L31102	KNOB-INLAY (4)	A-6
M057	591M73001	LINK-B	K-1
M058	591M73101	LOCK-LINK	L-1
M059	630M32302	POST-CL	T-5
M060	630M32702	SPACER-HEAD	Q-3
M061	630M36101	CRANK-ROLLER	S-7
M062	630M39001	SHAFT-LL	Q-12
M063	630M39201	BOSS-CL	S-14
M064	640M00207	WASHER-P	U-5
M065	641L02401	CRANK-GEAR	S-8
M066	641M09001	BOTTOM-CAP	S-15,R-14
M067	590M69801	LINK	N-4

MODEL No.: CX-85F (1) CX-86F (3)
CX-85FY (2) CX-86FY (4)

Ref. No.	Part No.	Description	Index
M068	642L02901	INSULATOR	I-1
M069	641M16602	PULLEY-IDLER	O-14
M070	641M18901	IDLER-GEAR-B	O-8
M071	642M27901	INSULATOR-PLATE (1)(2)	J-7
M072	642M06201	INSULATOR-PLATE	M-11
M073	642M06802	DAMPER	E-4
M074	642M06803	DAMPER	I-2
M075	704M67201	KNOB-SW	M-15
M076	704M67301	KNOB-EJECT	L-13
M077	704M67401	KNOB-FF	K-13
M078	704M67402	KNOB-FF	N-14
M079	766M02704	SPACER	E-5
M080	768L02705	SHUTTER (3)	L-5
	768L02706	SHUTTER (4)	L-5
	768L02707	SHUTTER (1)	L-5
	768L02708	SHUTTER (2)	L-5
M081	704M68101	KNOB-DM (1)(2)	K-17
M082	891K01302	MAIN-BASE	Q-11
M083	891K01504	SLIP-PULLEY	P-4
M084	891L01901	UNIT-PINCH-ROLLER-L	P-8
M085	891L01902	UNIT-PINCH-ROLLER-R	Q-7
M086	891L04904	REEL-REST	N-8
M087	591L01101	BRIDGE-L	M-10
M088	591L01201	BRIDGE-R	R-12
M089	891M04701	SLIDE-BASE	Q-4
M090	891M04801	ASSY-PULLEY	T-12
M091	943L27606	ASSY-ELEVATOR	M-5
M092	943L35304	ASSY-MOTOR	L-5
M093	963L31801	ASSY-PANEL (1)	B-4
	963L31802	ASSY-PANEL (2)	B-4
	963L31803	ASSY-PANEL (3)	B-4
	963L31804	ASSY-PANEL (4)	B-4

ELECTRICAL PARTS LIST

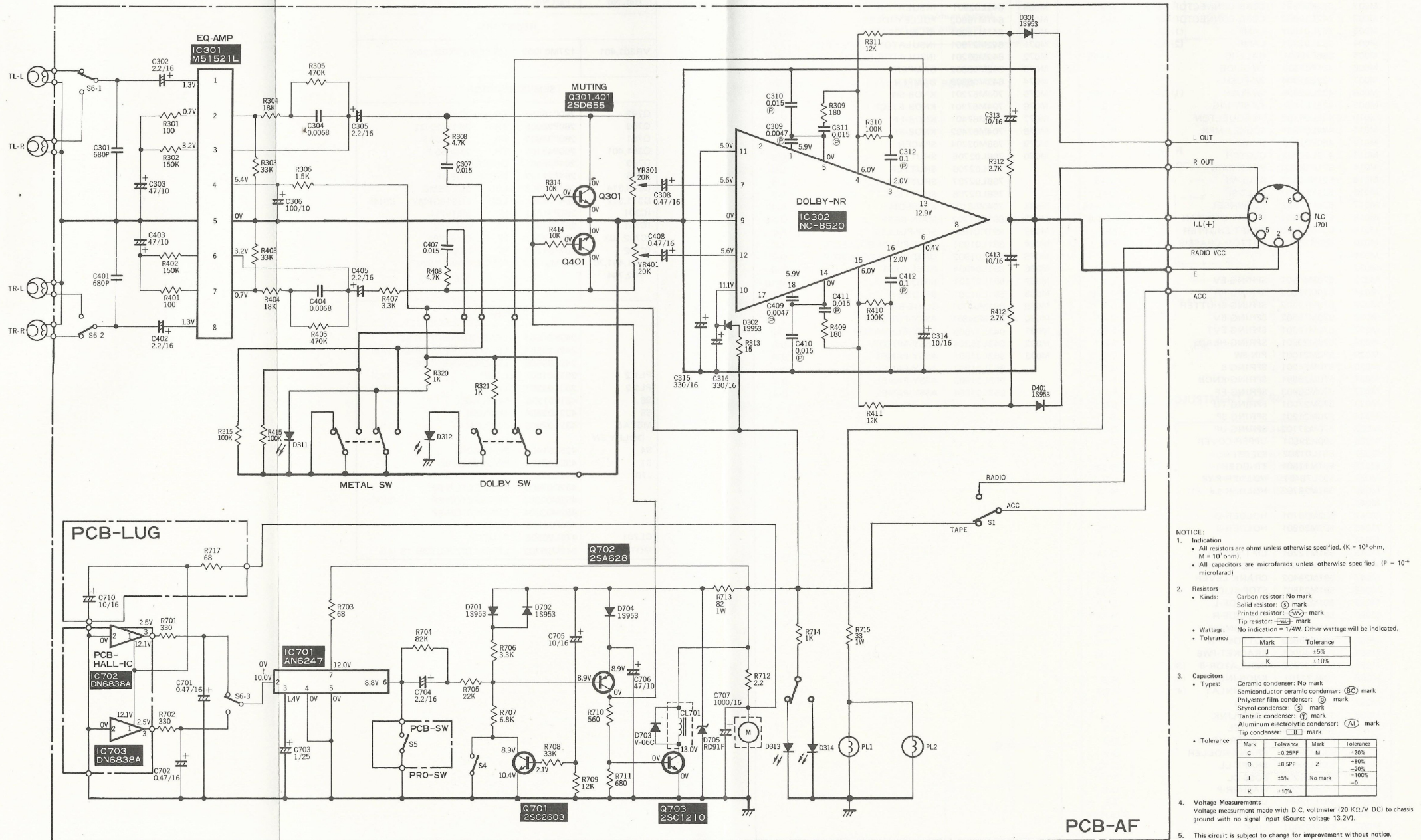
1

MODEL No.: CX-85F (1) CX-86F (3)
CX-85FY (2) CX-86FY (4)

Ref. No	Part No.	Description
RESISTORS		
VR301,401	127M03003	VR-SEMIFIXED 20K
SEMICONDUCTORS		
Q702	260P16504	TR 2SA628-F
Q703	260P28005	TR 2SC1210-D2
Q701	260P33803	TR 2SC2603-F
Q301,401	260P43101	TR 2SD655-F
D703	264P08801	DIODE V-06C
D705	264P21103	DIODE RD9.1F
D313,314	264P23903	LED SLT-35MG
D311,312	264P34301	LED LN310GPMY (3)(4)
IC301	266P31601	IC M51521L
IC701	266P62601	IC AN6247
IC702,703	266P79001	IC DN6838A
IC302	267P31701	IC NC8520
D301,401,701, 702,704	269M01201	DIODE 1S953/1S2076/ 1S2473
OTHERS		
	242K03801	LEAD-CONNECTOR-9S
	242L39505	LEAD-CONNECTOR-8S (1)(2)
	242L39608	LEAD-CONNECTOR-9S
PL1,2	253L01501	LAMP (1)(3)
PL1,2	253L02201	LAMP (2)(4)
S6	431P01306	SW-SLIDE
S5	432L02904	SW-PUSH
METAL, DOLBY SW	432L02905	SW-PUSH (3)(4)
S4	435L01401	SW-SPRING
S1	439L00102	SW-SQUELTON
J701	449L00501	SOCKET-MPX
	452D07909	CONNECTOR-9P
	452M02303	CONNECTOR-8P (3)(4)
	452M02304	CONNECTOR-9P
	460P03105	HEAD
CL701	479L00503	CLUTCH
MOTOR-ANT	242M29702	LEAD-CONNECTOR-1S (4)

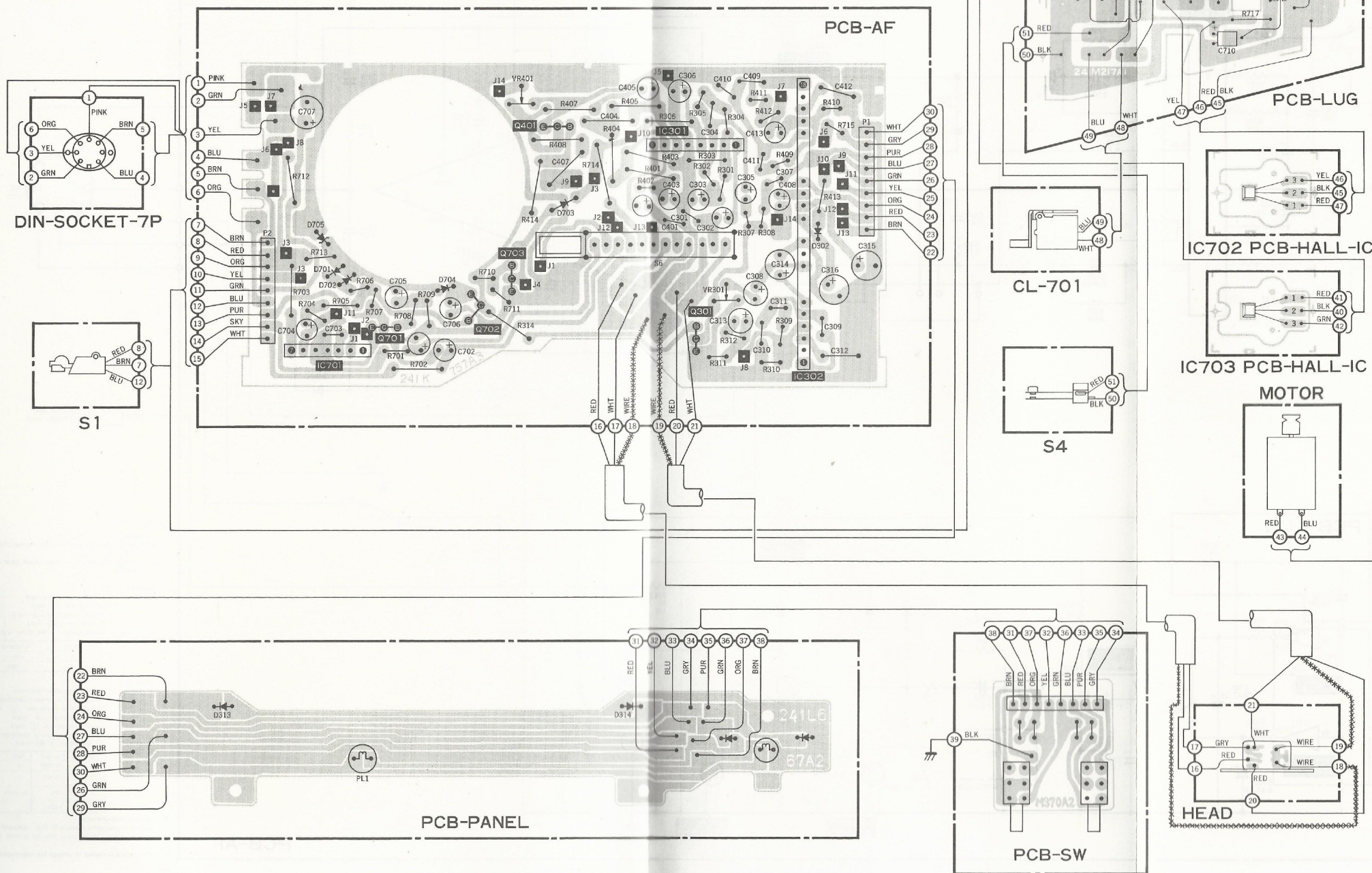
SCHEMATIC DIAGRAM

MODEL: CX-85F, FY



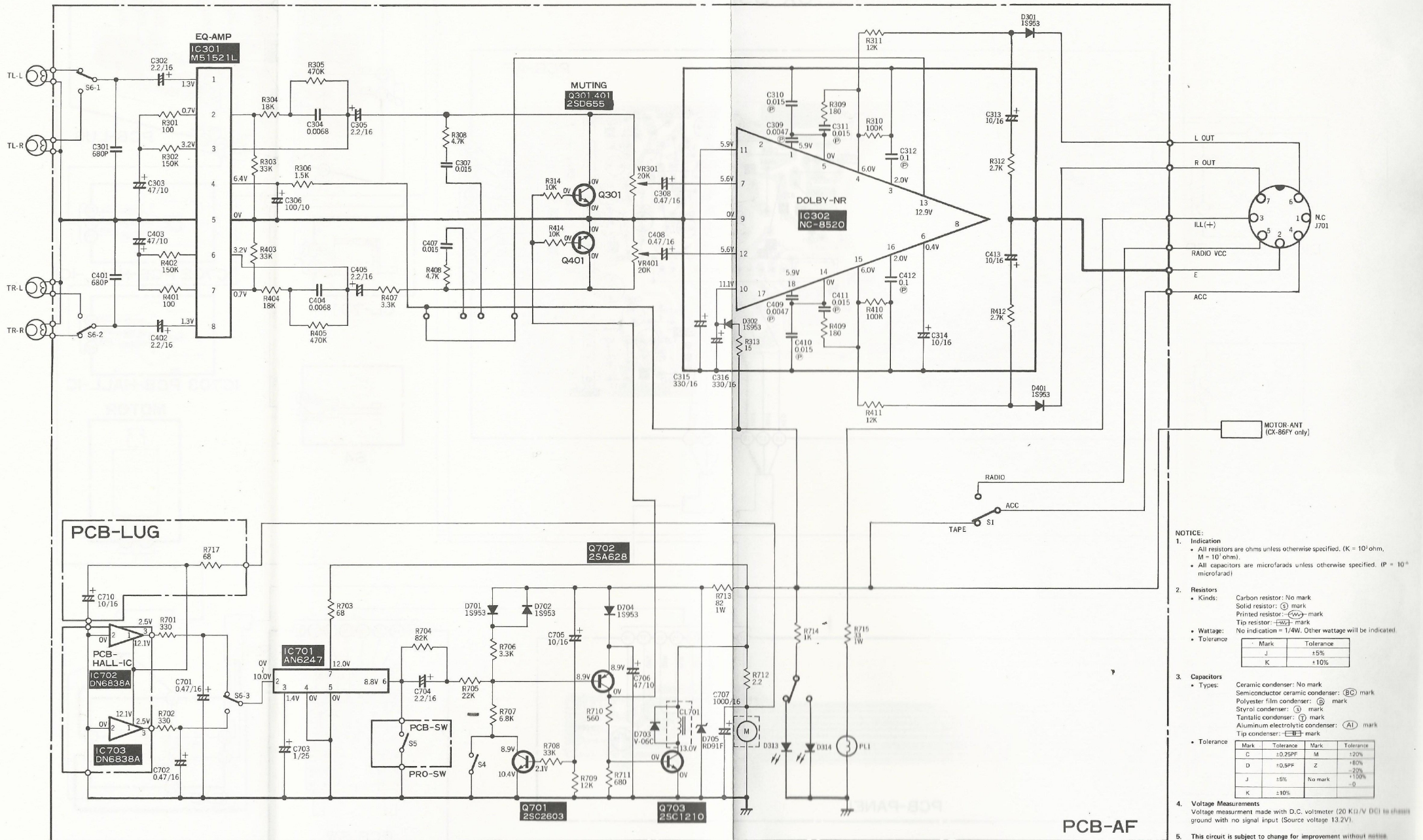
PRINTED CIRCUIT BOARD (Pattern Side)

MODEL : CX-85F,FY



SCHEMATIC DIAGRAM

MODEL: CX-86F, FY



- NOTICE:**
- Indication
 - All resistors are ohms unless otherwise specified. (K = 10³ ohm, M = 10⁶ ohm).
 - All capacitors are microfarads unless otherwise specified. (P = 10⁻⁶ microfarad).
 - Resistors
 - Kind: Carbon resistor: No mark; Solid resistor: (S) mark; Printed resistor: (P) mark; Tip resistor: (T) mark.
 - Wattage: No indication = 1/4W. Other wattage will be indicated.
 - Tolerance:

Mark	Tolerance
J	±5%
K	±10%
 - Capacitors
 - Types: Ceramic condenser: No mark; Semiconductor ceramic condenser: (SC) mark; Polyester film condenser: (P) mark; Styrol condenser: (S) mark; Tantalic condenser: (T) mark; Aluminium electrolytic condenser: (AL) mark; Tip condenser: (T) mark.
 - Tolerance:

Mark	Tolerance	Mark	Tolerance
C	±0.25PF	M	±20%
D	±0.5PF	Z	±80%
J	±5%	No mark	±20%
K	±10%		±100%
 - Voltage Measurements

Voltage measurement made with D.C. voltmeter (20 K Ω /V DC) to chassis ground with no signal input (Source voltage 13.2V).
 - This circuit is subject to change for improvement without notice.

PRINTED CIRCUIT BOARD (Pattern Side)

MODEL: CX-86F, FY

