

# SPECIFICATIONS

# Hitachi CS-200 1C

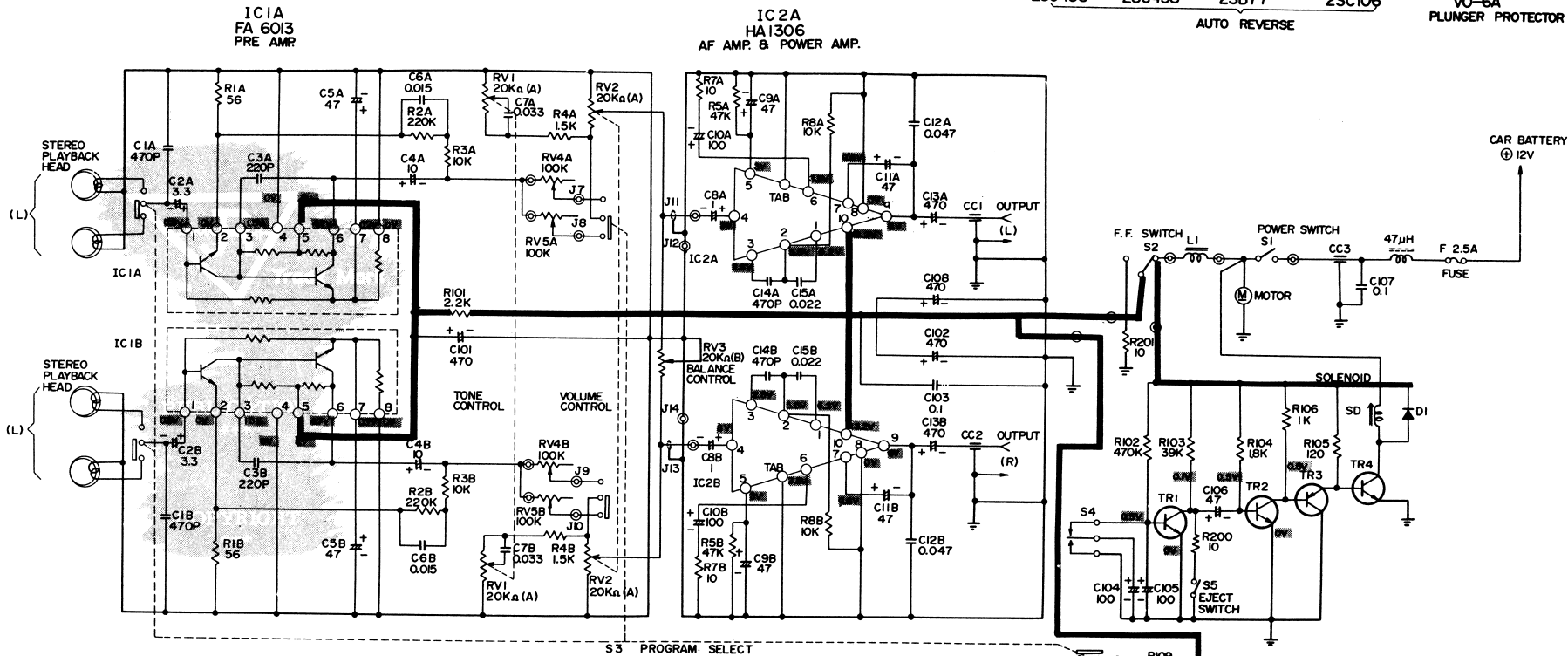
# H71



PLAYBACK SYSTEM..... 4-track 2-channel 2-program stereo playback system (2-track 1-channel 2-program monaural)  
 TAPE..... Compact cassette  
 TAPE SPEED..... 1 7/8 ips (4.75 cm/s)  
 IC  
 IC1A,B FA6013 X 2..... PRE Amp.  
 IC2A,B HA1306 X 2..... AF Amp. & Power Amp.  
 TRANSISTORS  
 TR1 2SC458 } ..... Auto reverse  
 TR2 2SC458 }  
 TR3 2SB77 ..... Auto reverse  
 TR4 2SC1061 ..... Auto reverse

DIODE  
 DI V06A..... Plunger protector  
 PROGRAM CHANGE SYSTEM... Automatic or push button system  
 FREQUENCY RANGE..... 50 ~ 10,000 Hz  
 AUDIO OUTPUT..... 14 W with 2 speakers, 4 ohm load  
 OUTPUT IMPEDANCE..... 4 ohm  
 POWER SUPPLY..... DC 12V, ⊖ earth (Used car battery)  
 CURRENT COMSUMPTION...0.5A  
 DIMENSIONS..... 2 3/16" (H) X 5 1/2" (W) X 7 1/2" (D) (5.5 X 14 X 19 cm)  
 WEIGHT..... 4 lbs. 6 oz. (2kg)

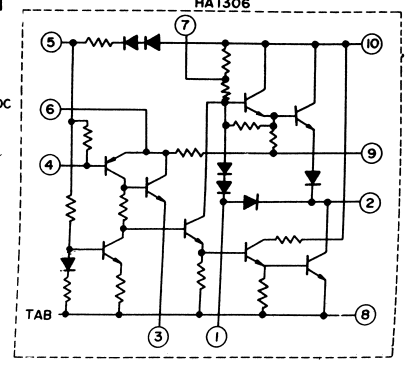
TR1 2SC458    TR2 2SC458    TR3 2SB77    TR4 2SC106  
 AUTO REVERSE  
 DI V0-6A  
 PLUNGER PROTECTOR



IC1B  
FA6013  
PRE AMP

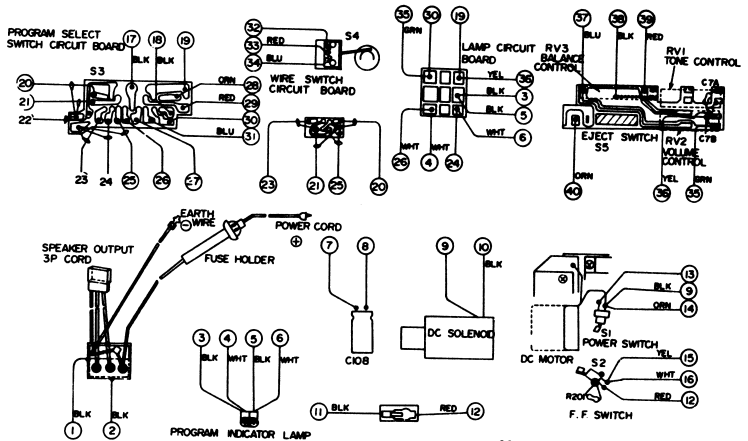
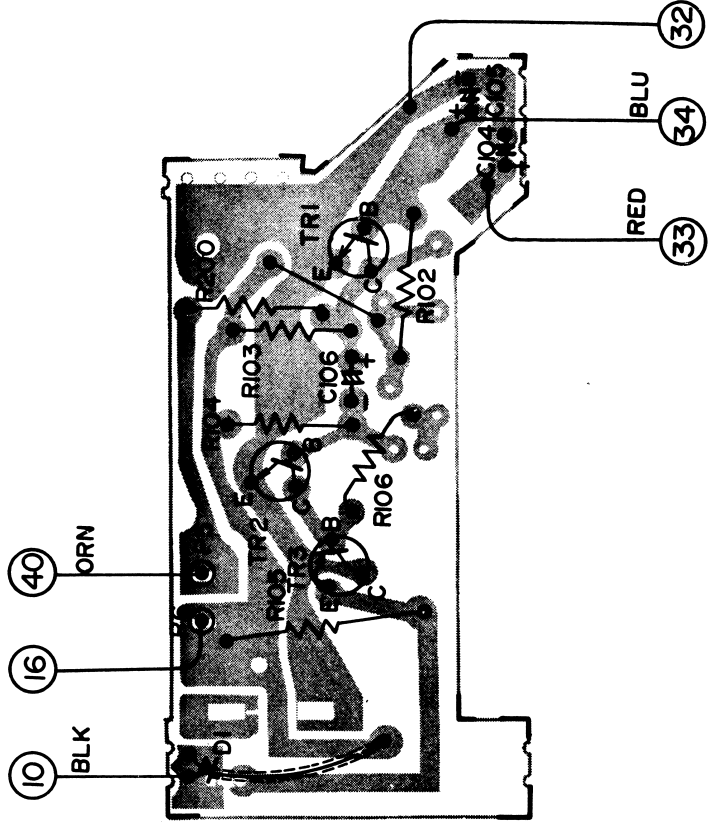
IC2B  
HA1306  
AF AMP. & POWER AMP.

NOTE: 1. VOLTAGE MEASURED WITH VOLTMETER AT DC 132V(⊖) SIDE EARTH, VOLUME CONTROL AT MINIMUM AND NO SIGNAL.  
 2. ALL RESISTANCE VALUES IN OHMS. K=1000  
 3. ALL CAPACITANCE VALUES μF EXCEPT "P" NOTED. P=μμF = PF



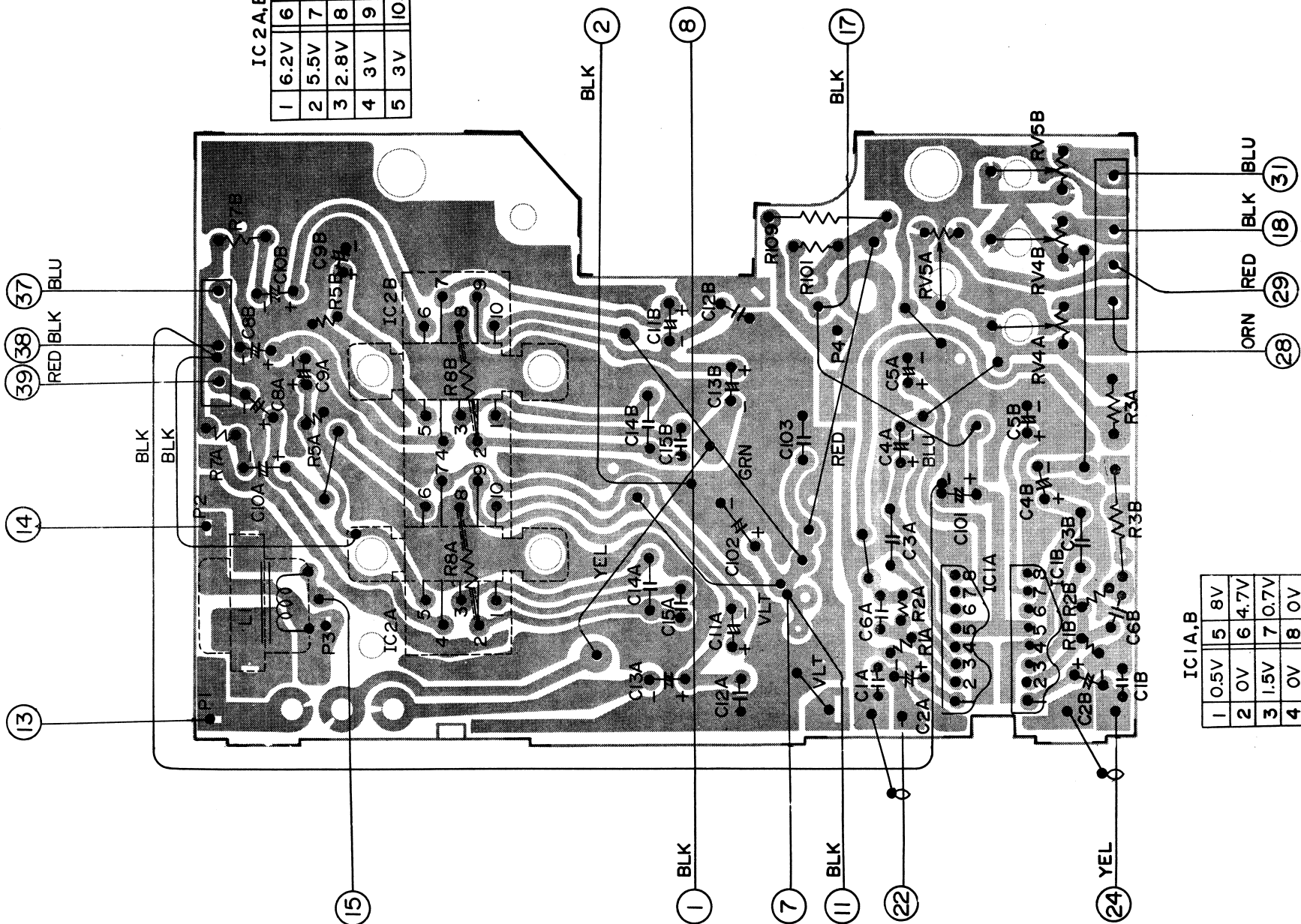
IC1A,B

1	0.5V	5	8V
2	0V	6	4.7V
3	1.5V	7	0.7V
4	0V	8	0V



IC 2A,B

1	6.2V	6	3.8V
2	5.5V	7	4.6V
3	2.8V	8	0V
4	3V	9	6V
5	3V	10	13.2V



IC 1A,B

1	0.5V	5	8V
2	0V	6	4.7V
3	1.5V	7	0.7V
4	0V	8	0V