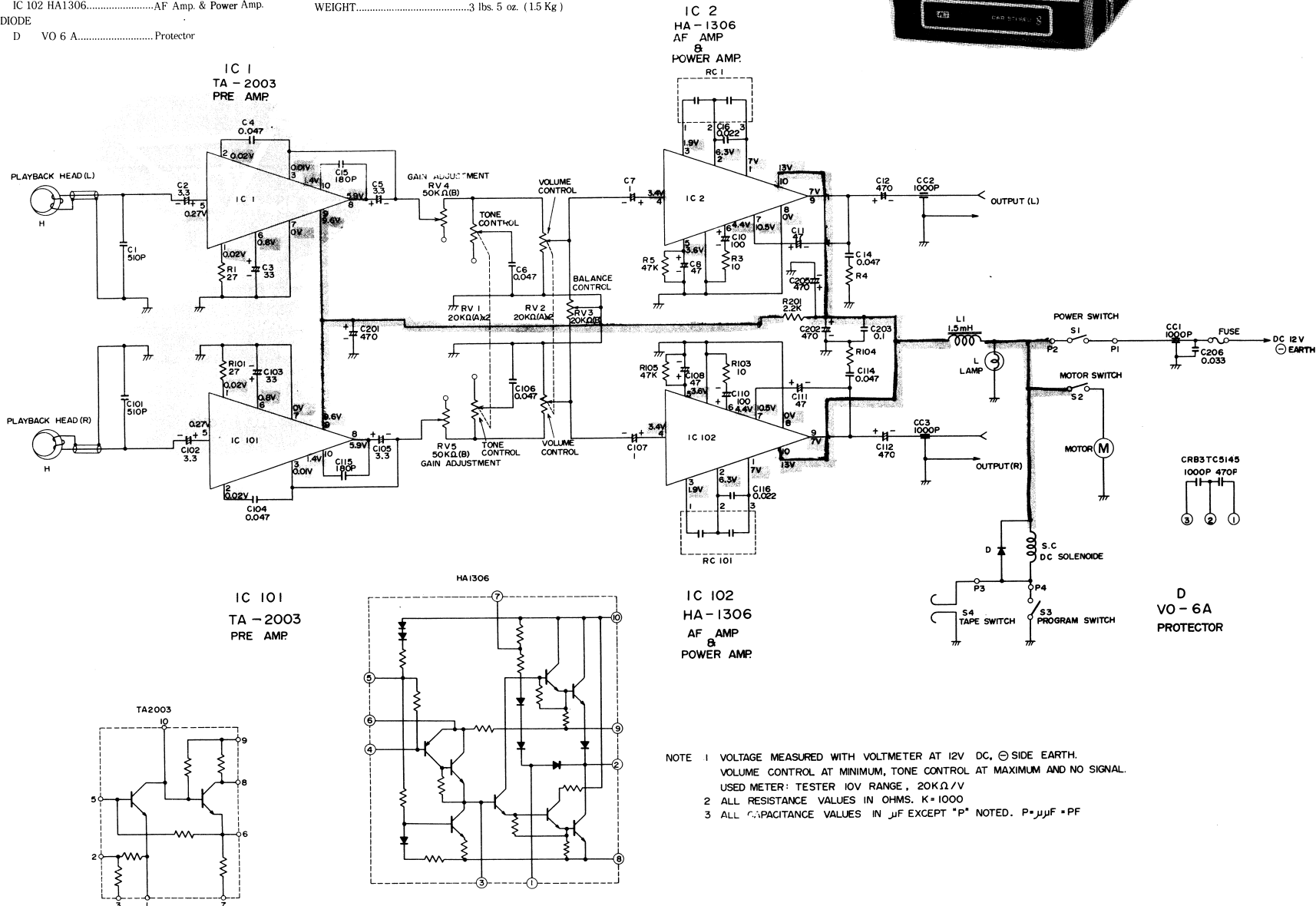
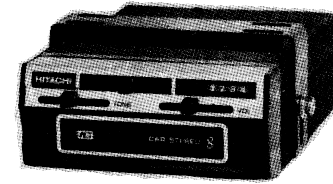


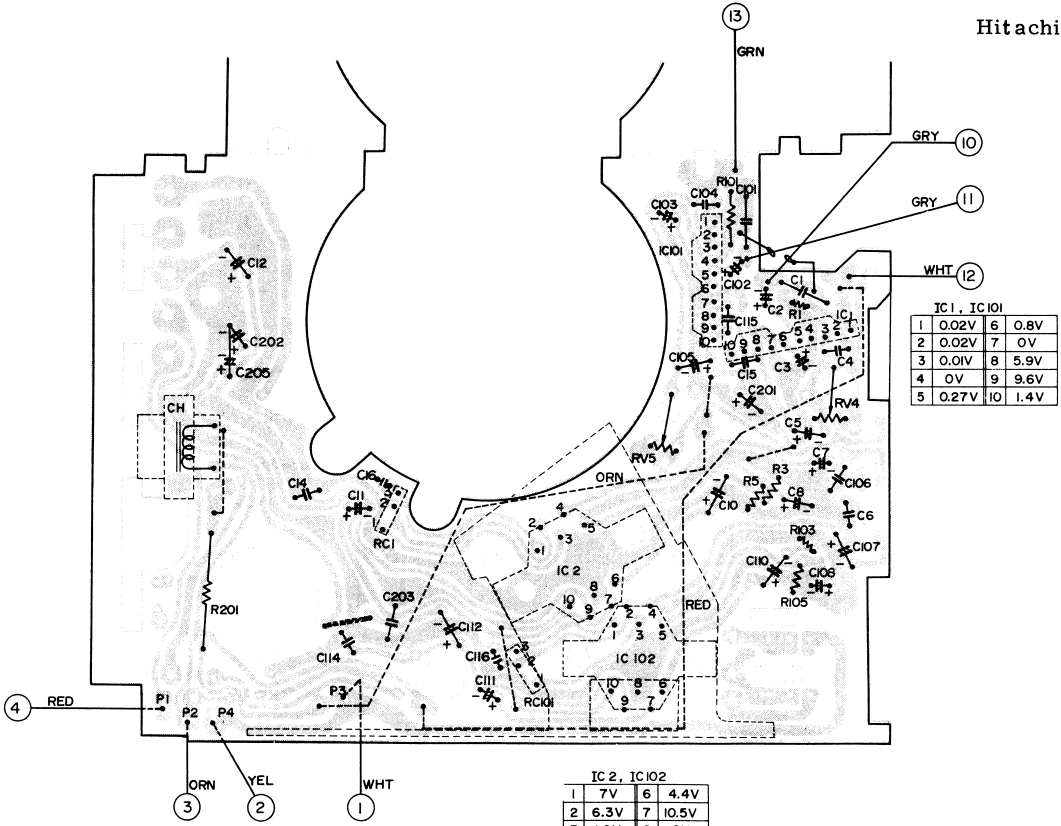
# SPECIFICATIONS

# Hitachi CS-1400 1C

# H75

PLAYBACK SYSTEM.....	8-track 2-channel 4-program	FREQUENCY RANGE.....	50-10,000Hz
CARTRIDGE.....	Stereo 8 tracks	AUDIO OUTPUT.....	14W at 2 speakers, 4 ohm
TAPE SPEED.....	3 3/4 ips ( 9.5 cm/s )	OUTPUT IMPEDANCE.....	4 ohm
PROGRAM CHANGE SYSTEM...	Automatic or push button system	POWER SUPPLY.....	DC 14.4 V negative ground ( Use car battery )
IC (Integrated Circuit )		CURRENT CONSUMPTION.....	0.5 A
IC 1 TA2003.....	Pre-amp.	DIMENSIONS.....	2 <sup>1</sup> / <sub>2</sub> (H) × 4 3/4 <sup>1</sup> / <sub>2</sub> (W) × 6 7/8 <sup>1</sup> / <sub>2</sub> (D) ( 5 × 12 × 17.5 cm )
IC 2 HA1306.....	AF Amp. & Power Amp.	WEIGHT.....	3 lbs. 5 oz. (1.5 Kg)
IC 101 TA2003.....	Pre-amp.		
IC 102 HA1306.....	AF Amp. & Power Amp.		
DIODE			
D VO 6 A.....	Protector		

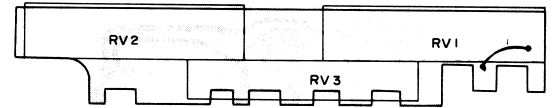
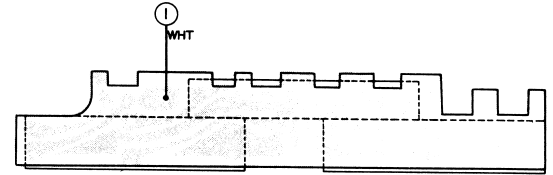




Hitachi

IC 1, IC101			
1	0.02V	6	0.8V
2	0.02V	7	0V
3	0.01V	8	5.9V
4	0V	9	9.6V
5	0.27V	10	1.4V

IC 2, IC102			
1	7V	6	4.4V
2	6.3V	7	10.5V
3	1.9V	8	0V
4	3.4V	9	7V
5	3.6V	10	13V



VOLUME CIRCUIT BOARD

