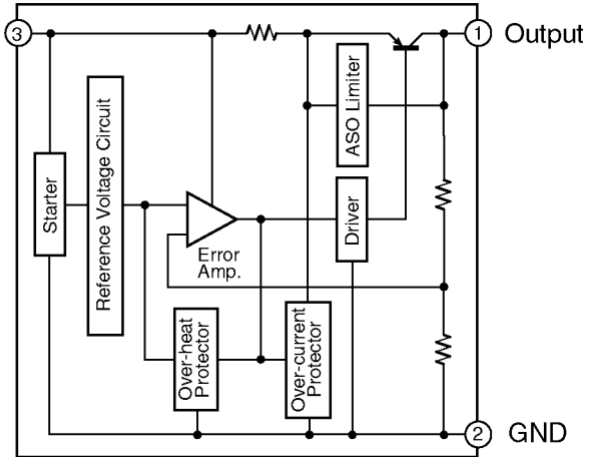
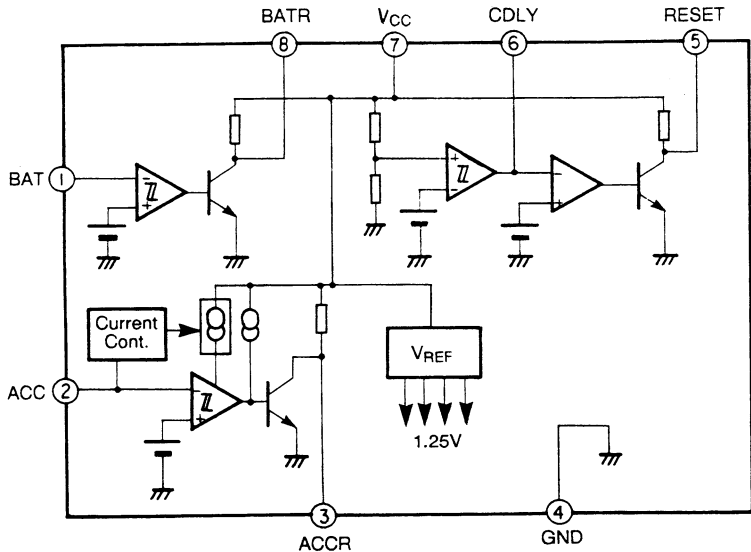
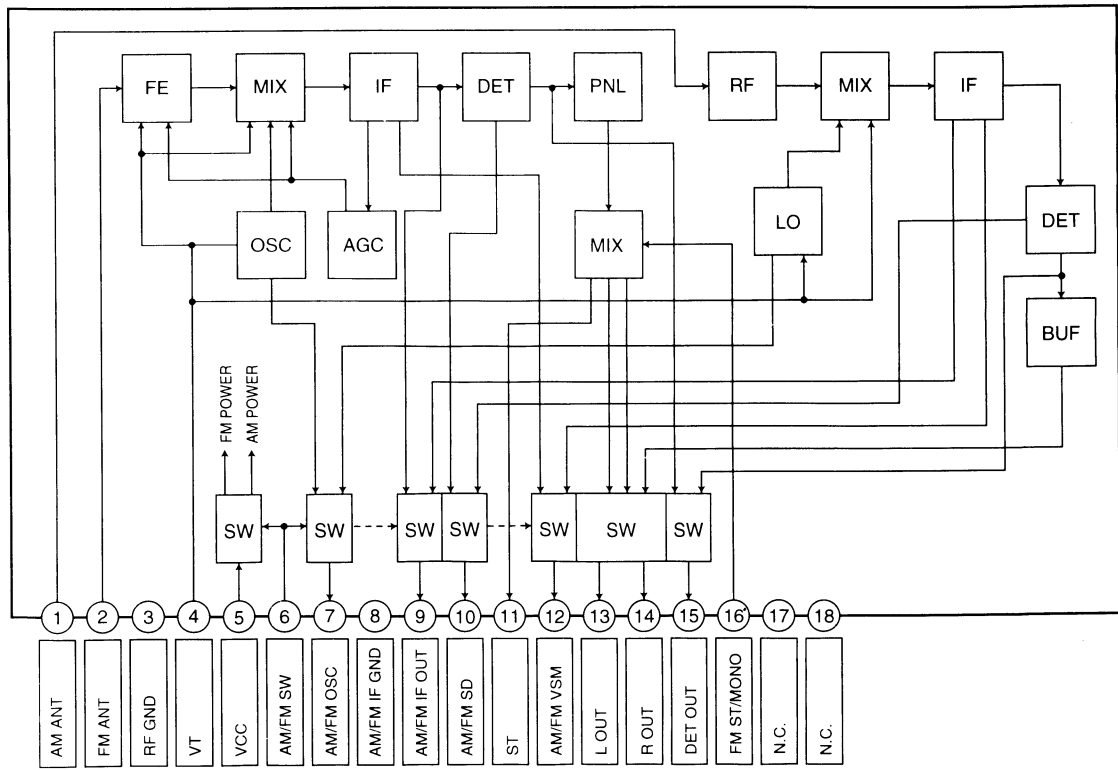


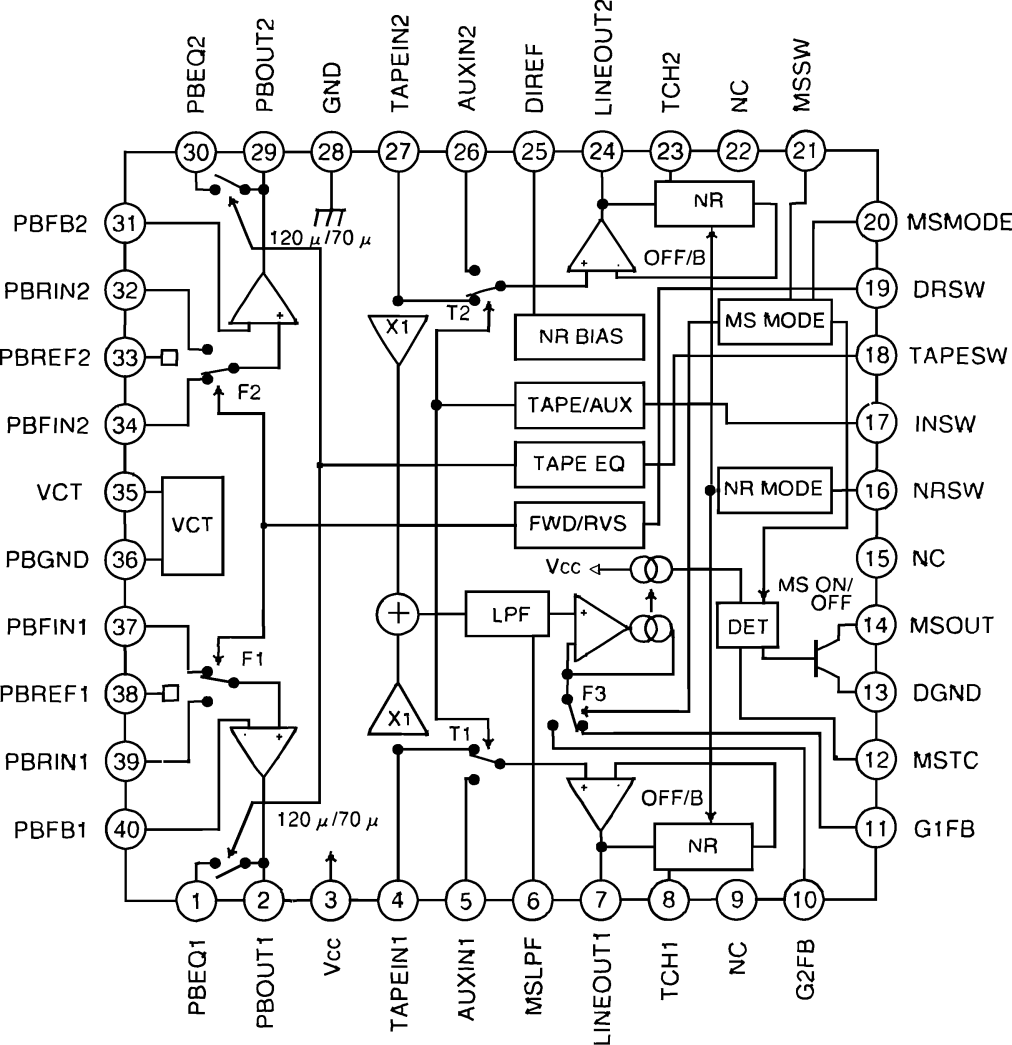
Input



GND





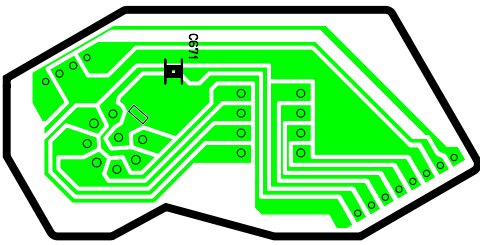


178mm

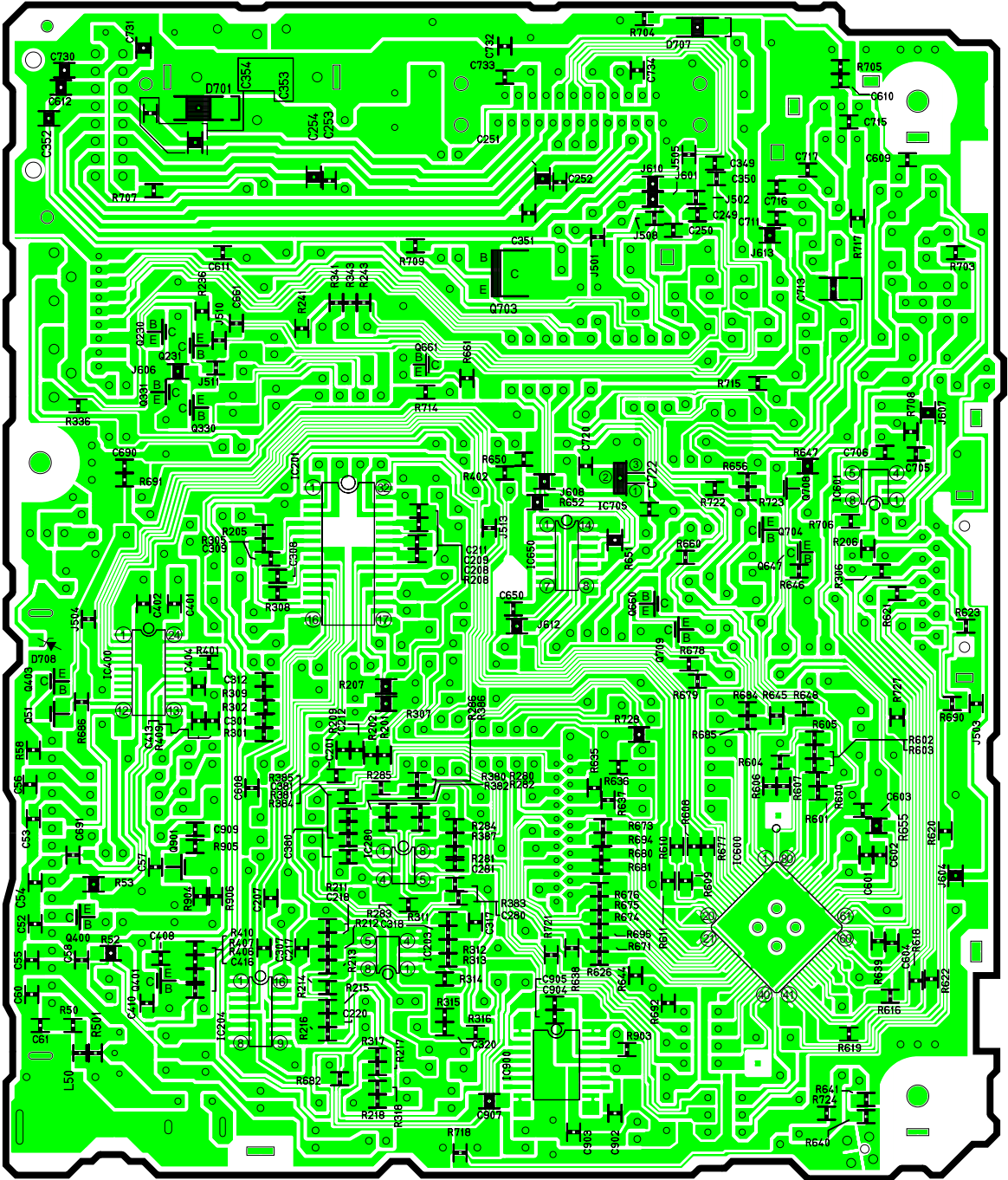
50mm

150mm

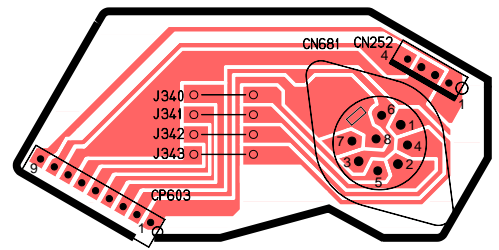




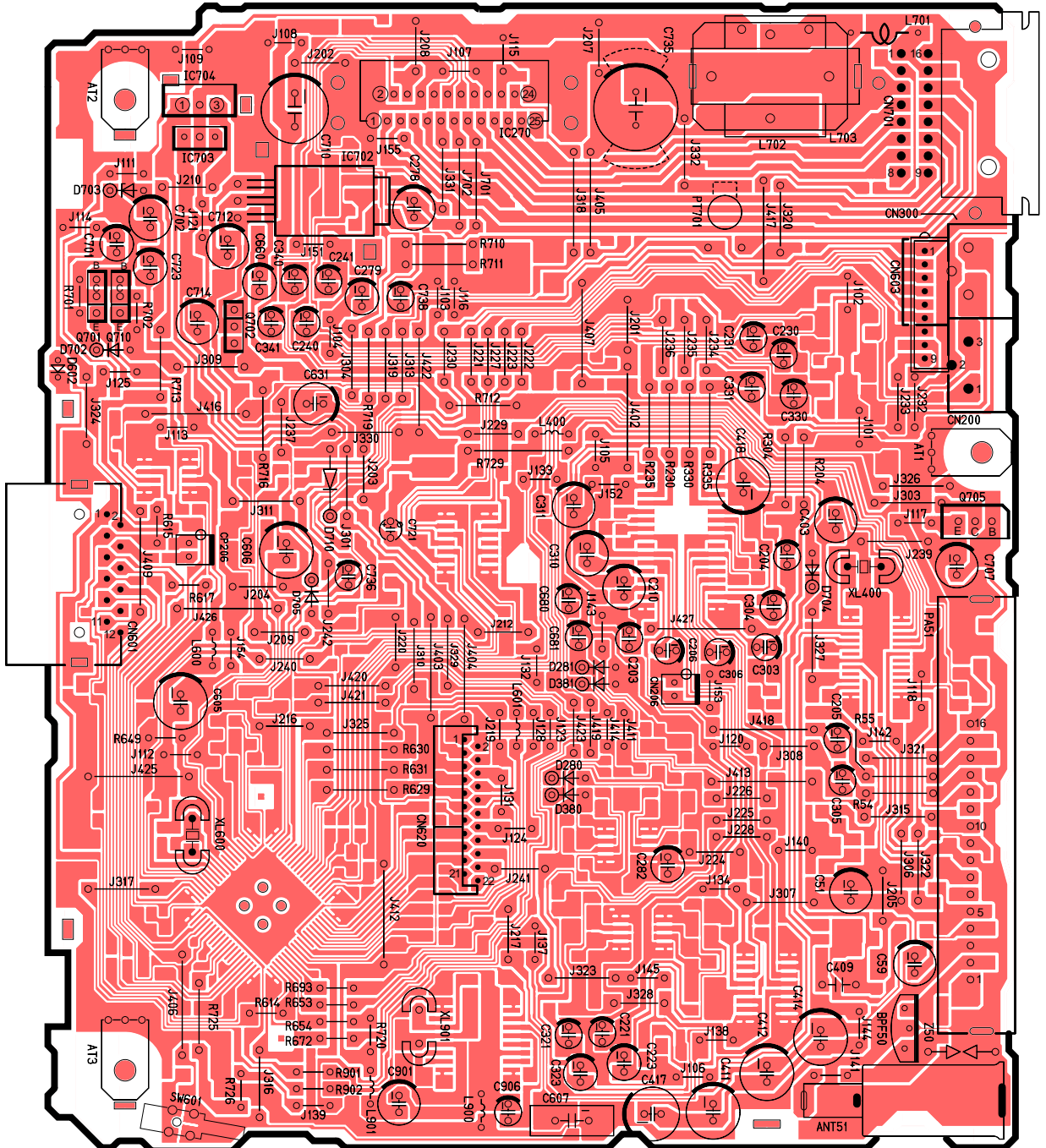
[E-6799Ab][Bottom View]

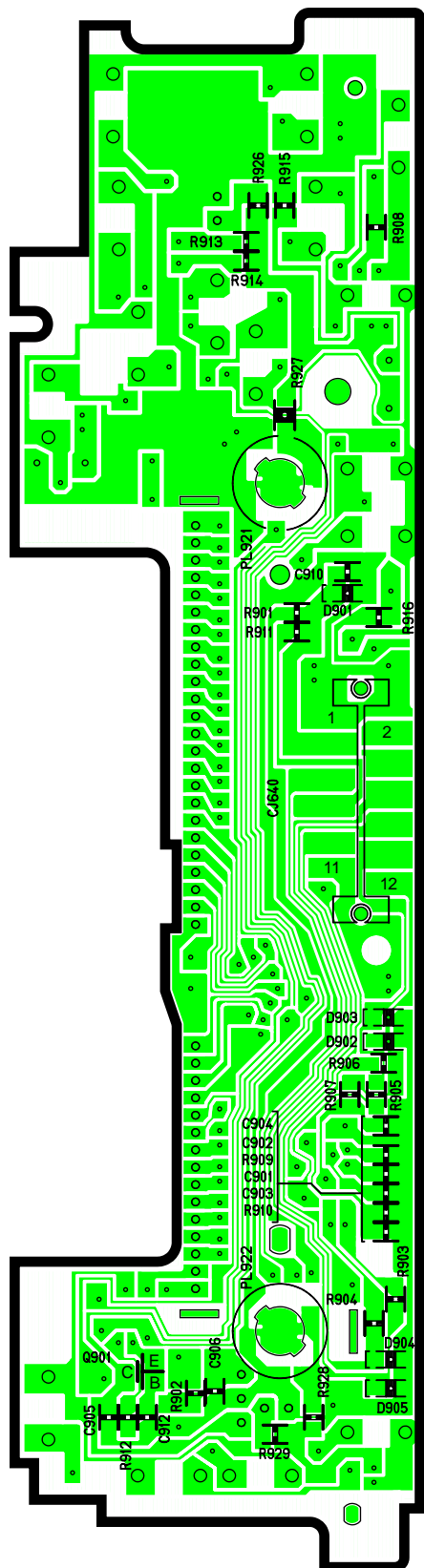
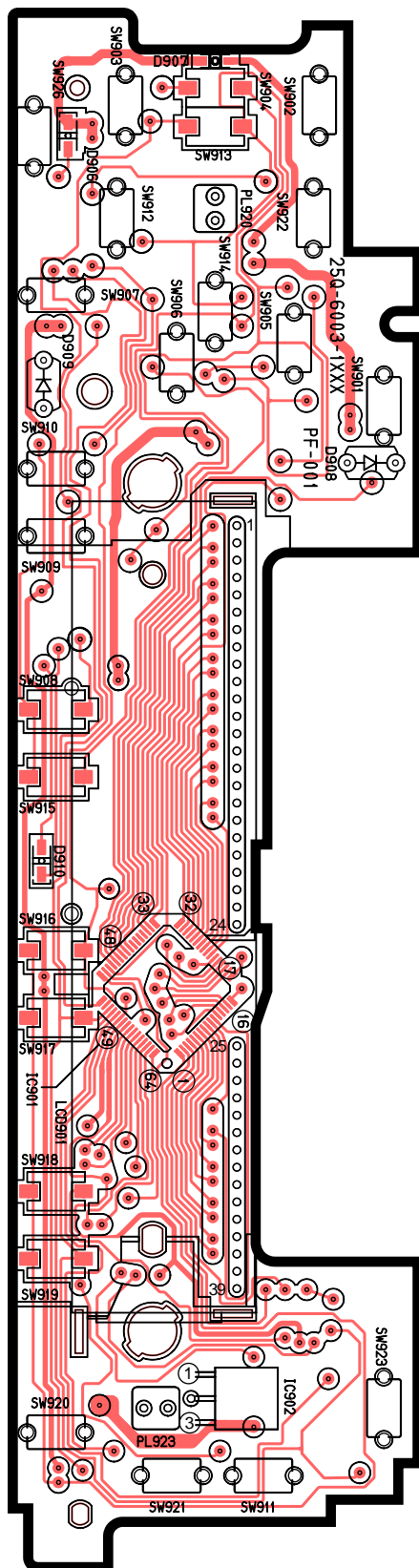


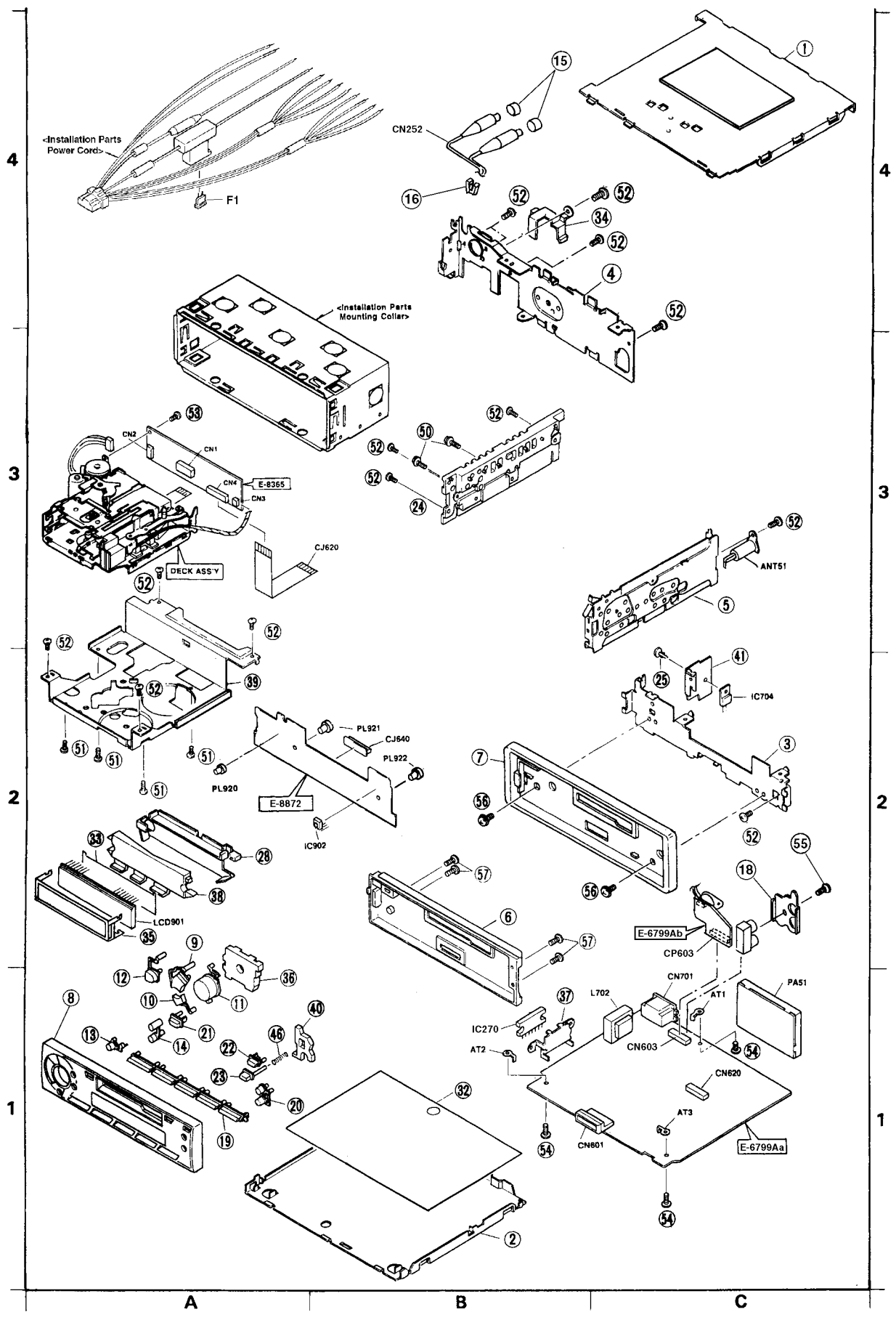
[E-6799Aa][Bottom View]



[E-6799Ab][Top View]







4

4

3

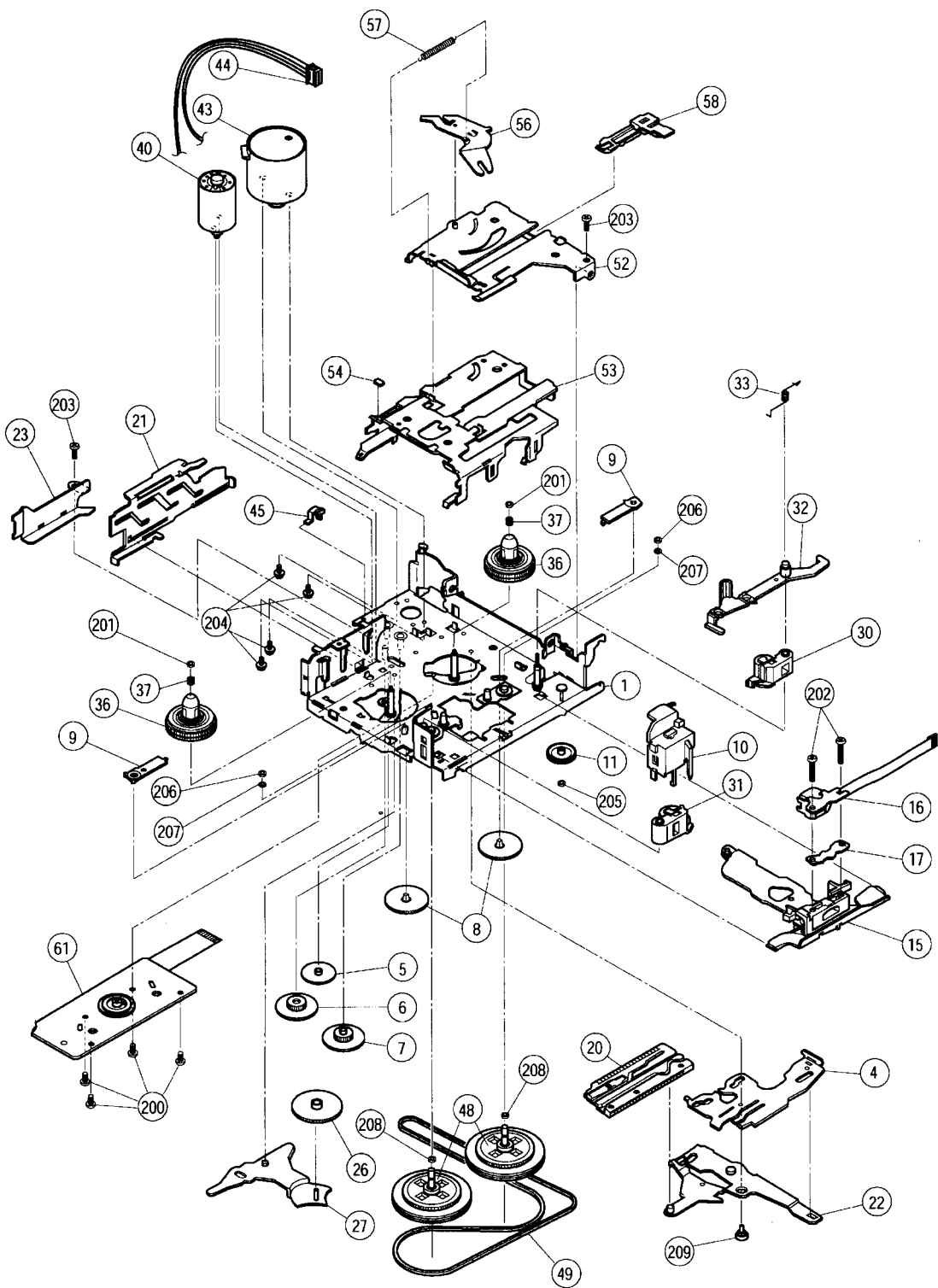
3

2

2

1

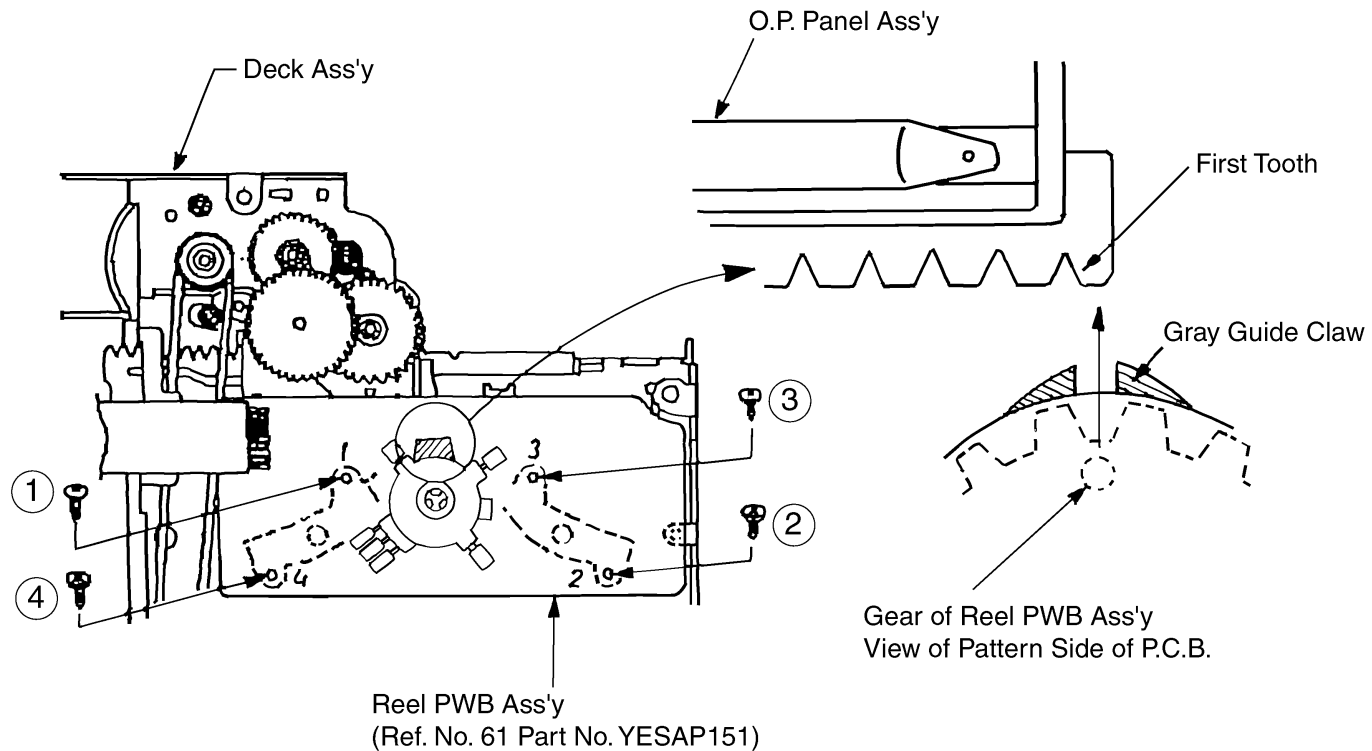
1

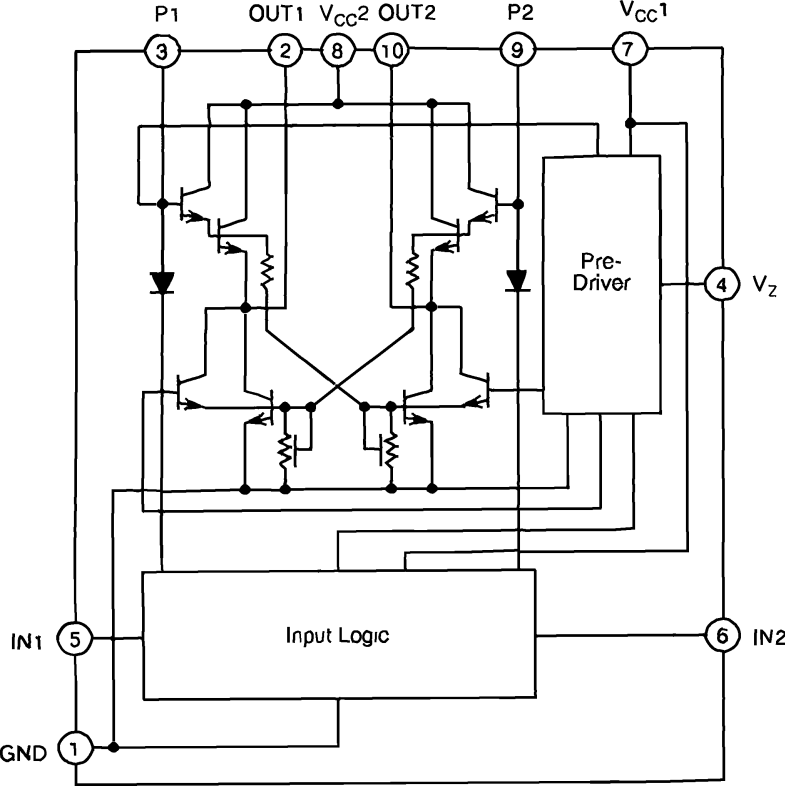


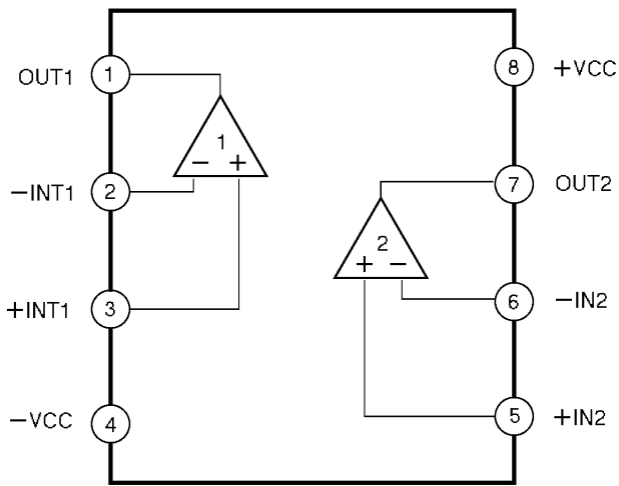
A

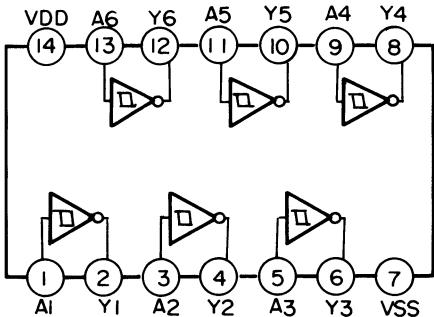
B

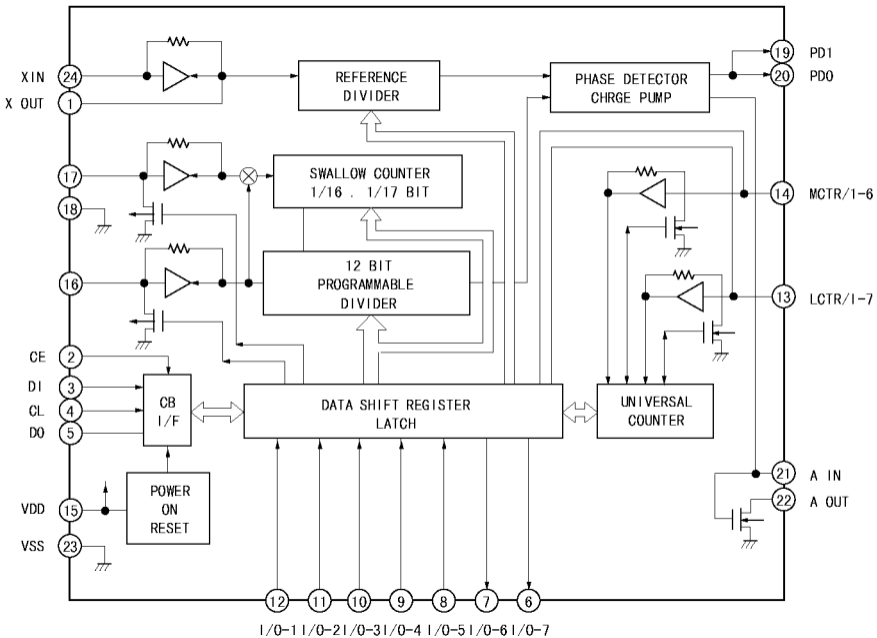
C

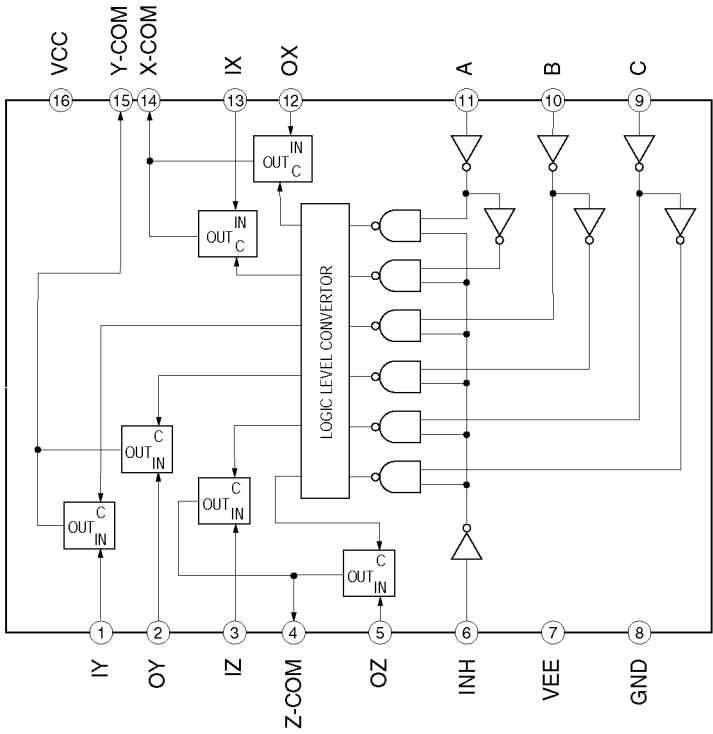


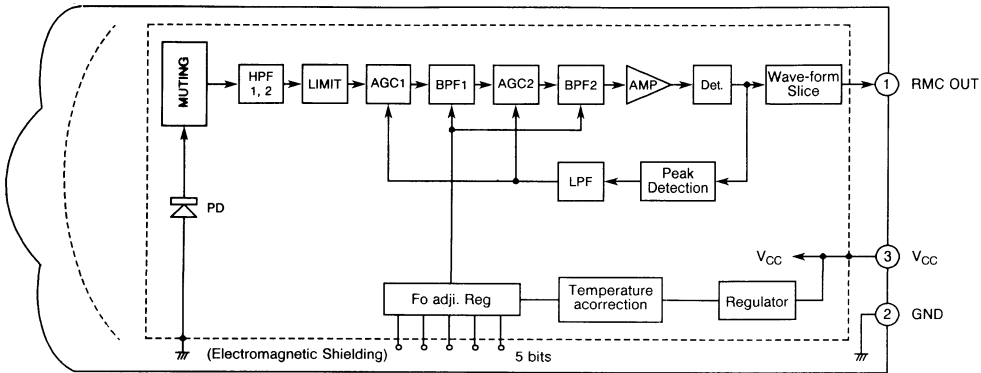




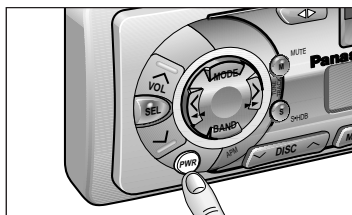
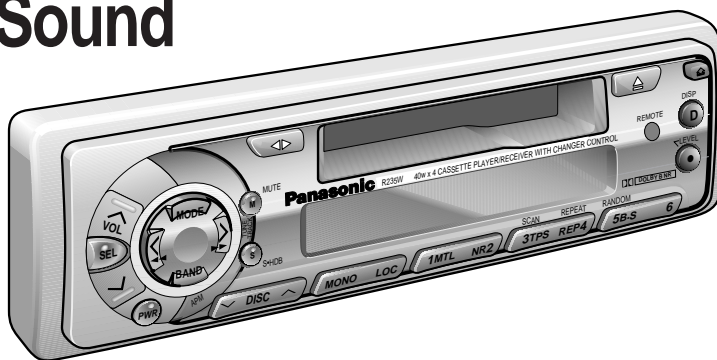






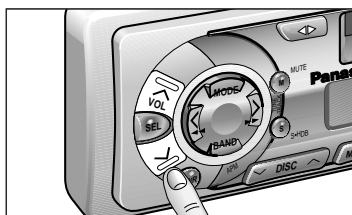


Power and Sound Controls



Power

Turn the key in the ignition until the accessory indicator lights.
Press **[PWR]** to switch on the power.
Press **[PWR]** again to switch off the power.



Volume

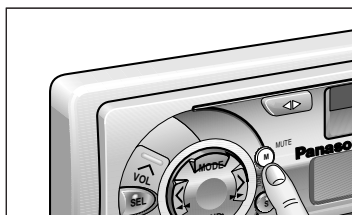
- Press **[^VOL]** or **[vVOL]** to increase or decrease the volume.

VOL 20 — Volume Level (0 to 40)

- Press and hold **[^VOL]** or **[vVOL]** for more than 0.5 seconds to change the numeric level in sequence.

Anti-Volume-Blast Circuit

This product has a safety function which slowly raises volume level when power is switched back on after it is turned off at a specific level (20) or higher.



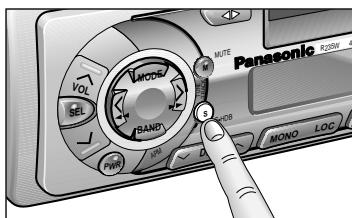
Mute

- Press **[M](MUTE)** to mute the sound completely.

MUTE

- Press **[M](MUTE)** again to cancel.

Note: In the VOL mode, the display will be back to regular operation mode with no operation for more than 2 seconds.

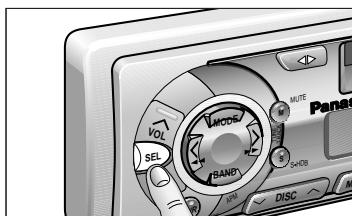


S•HDB (Super High Definition Bass)

Especially for rock music, the bass-sound will be more powerful.

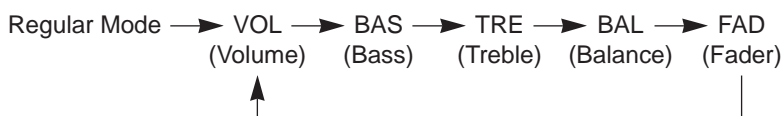
- Press [S](S•HDB) to be able to listen to high-definition bass.
- Press [S](S•HDB) again to cancel.

S•HDB



Audio Mode

Press [SEL] to change the audio mode setting as follows.



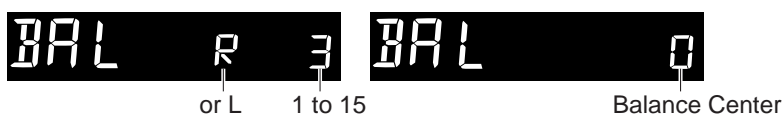
Bass and Treble

- Press [SEL] to change to the bass (or treble) mode. Press [∧VOL] or [∨VOL] to increase or decrease the bass (or treble) level by 3 dB step.



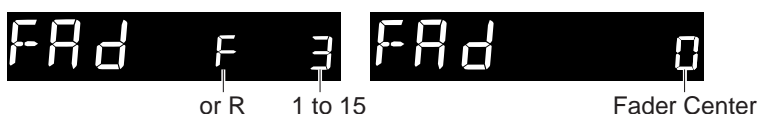
Balance

- Press [SEL] to change to the balance mode. Press [∧VOL] or [∨VOL] to shift the sound volume to the right (R) or left (L) speakers.

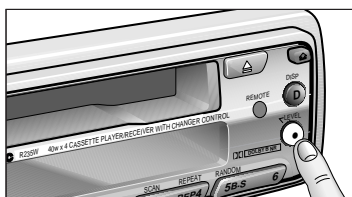


Fader

- Press [SEL] to change to the fader mode. Press [∧VOL] or [∨VOL] to shift the sound volume to the front (F) or rear (R) speakers.



Note: In the audio mode (BAS/TRE/BAL/FAD), the display will be back to regular operation mode with no operation for more than 5 seconds (2 seconds in the VOL mode).

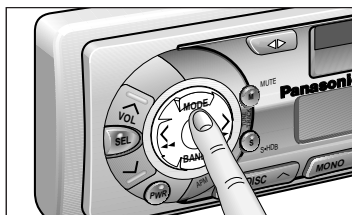
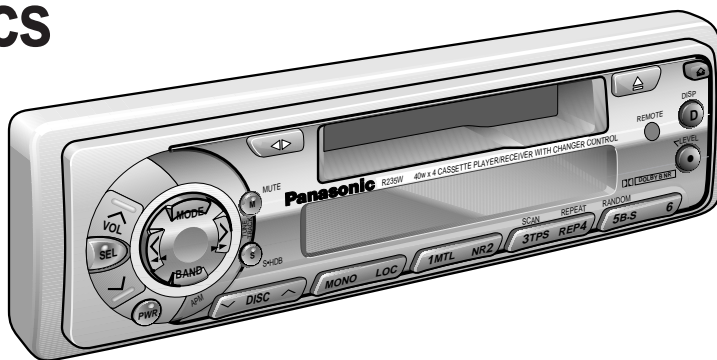


Level Meter

Press [•](LEVEL) to display the level of sound sources.
Press [•](LEVEL) again to cancel.

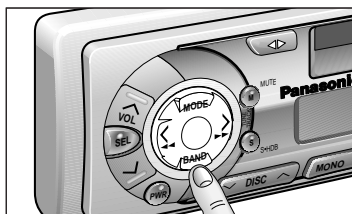
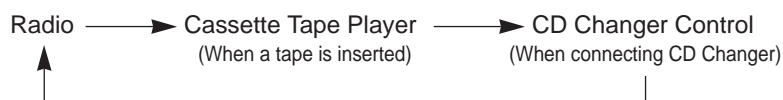
Note: The level meter indications do not change when VOL, BAL, or other control is turned.

Radio Basics



Tuner Mode

Press **[MODE]** to change the operation mode setting as follows.



Band

Press **[BAND]** to change the band setting as follows.



The stereo indicator lights during reception of an FM stereo broadcast.



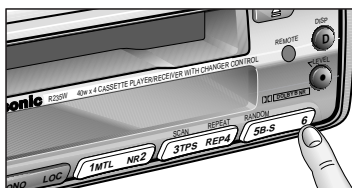
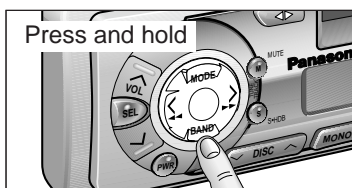
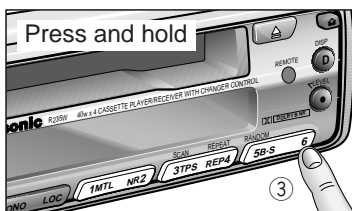
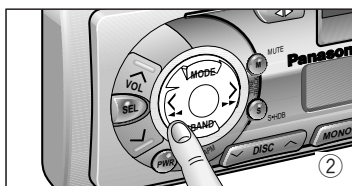
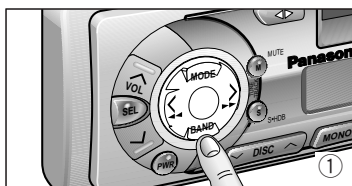
Manual Tuning

Press **[<TUNE]** or **[>TUNE]** to tune in a higher or lower frequency.



Seek Tuning

Press and hold **[<TUNE]** or **[>TUNE]** for more than 0.5 seconds, then release it. Tuning will automatically stop when a signal of the next broadcast station is received.



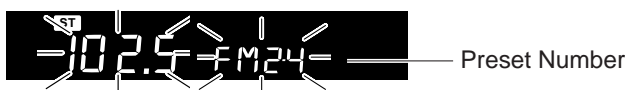
Station Preset

FM1, FM2, FM3 and AM can save a maximum 6 stations each in their preset station memories.

Caution: To ensure safety, never attempt to preset stations while you are driving.

Manual Station Preset

- ① Press **[BAND]** to select a desired band.
- ② Use manual or seek tuning to find a station which is to be preset in the memory.
- ③ Press and hold one of the preset buttons **[1]** to **[6]** until the display blinks.



Note: You can change the memory presetting by repeating the above procedure.

Auto Station Preset

Select the band and press and hold **[BAND]**(APM) for more than 2 seconds. (Auto Preset Memory)

- The 6 strongest available stations will be automatically saved in the memory on preset buttons **[1]** to **[6]**.
- Once set, the preset stations are sequentially scanned for 5 seconds each.

Note: The stations manually preset on the selected band will be deleted.

Tuning in a Preset Station

Press the corresponding preset button **[1]** to **[6]** to tune in a preset station.

MONO/LOCAL Selection

- At the MONO setting, noise is significantly decreased when weak signals are received from an FM broadcast station. (Only for FM mode)
- At the LOCAL setting, only strong signals of stations are searched in seek tuning, while at the LOCAL OFF setting, relatively weak signals are also searched.

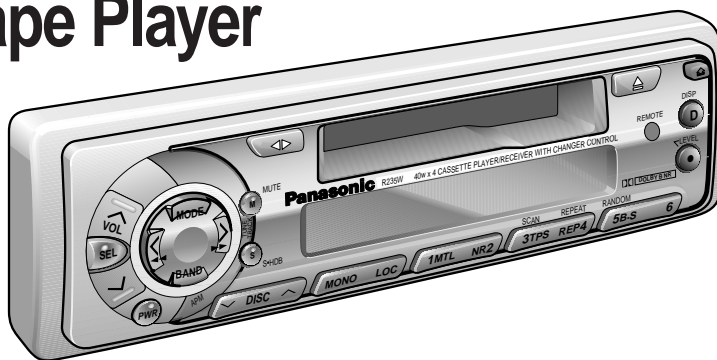
Press **[MONO]** to switch on or off the MONO mode as follows.

MONO OFF ↔ MONO ON

Press **[LOC]** to switch on or off the LOCAL mode as follows.

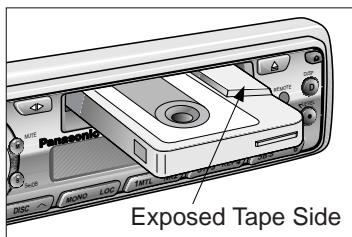
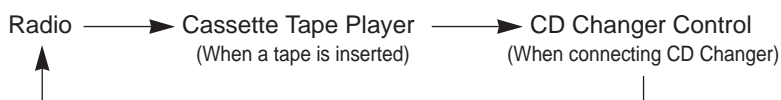
LOCAL OFF ↔ LOCAL ON

Cassette Tape Player Basics



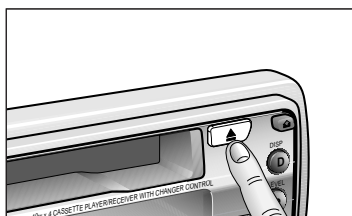
Mode Selection

Press [MODE] to change the operation mode setting as follows.



Tape Insert

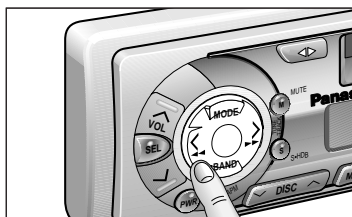
Insert a cassette with the exposed tape side facing to the right. Gently push the cassette in until the loading begins. The cassette will be loaded in place and playback starts.



Tape Eject

Press [▲] to eject the tape. The previous operation mode will resume.

Note: Always remove the cassette tape from the unit when the cassette tape player is not being used.



Rewind and Fast Forward

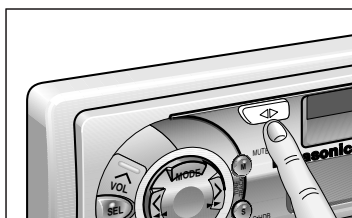
Press [◀◀TRACK] or [▶▶TRACK] to activate rewind or fast forward of the tape.



Press [◀▶] to resume the tape play.

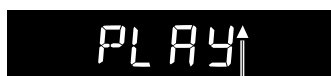
If you rewind the tape fully, it will play on the same program side again.

If you fast forward to the end, play will resume from the beginning of the other side of the tape.



Changing Sides

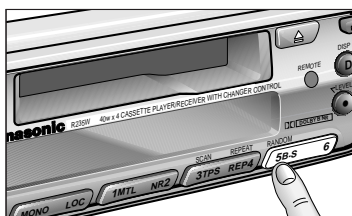
Press [◀▶] to reverse.



Top Side Playing



Bottom Side Playing



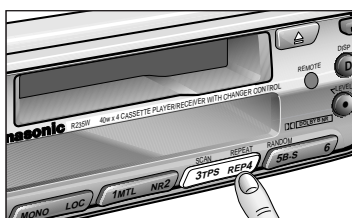
Blank Skip

- Press [5](B•S) to skip long unrecorded portions on the tape.
- Press [5](B•S) again to cancel.

B•SKIP

Notes:

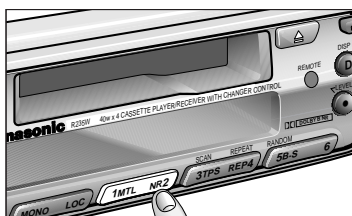
- When repeat is on, the blank skip does not work because the repeat has priority over the blank skip.
- The blank skip does not work when an unrecorded portion of a tape is less than 15 seconds.



Repeat Play

- Press [4](REP) to repeat the current program.
- Press [4](REP) again to cancel.

REPEAT

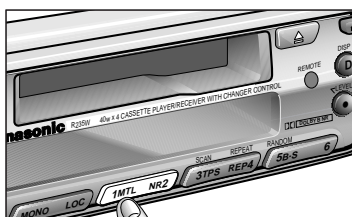


Dolby Noise Reduction

- Press [2](NR) to set the Dolby B NR mode.
- Press [2](NR) again to cancel.

NR

Note: Set the Dolby B NR mode when playing back a tape recorded with Dolby B Noise Reduction.



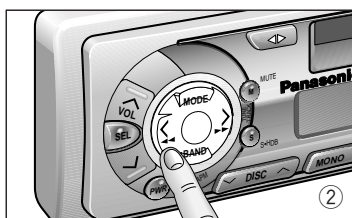
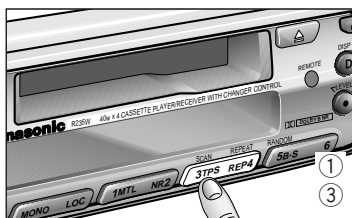
Metal Tape Mode

- Press [1](MTL) when playing metal or chromium dioxide (CrO₂) tapes.
- Press [1](MTL) again to cancel.

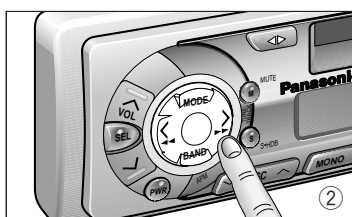
MTL

Note: Playing non-metal tapes in MTL mode causes high frequency imbalance, which affects tone quality.

Cassette Tape Player Basics (continued)

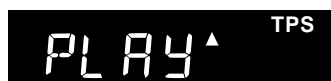


or



TPS Operation (Tape Program Search)

① Press **[3]**(TPS) to activate the tape program search mode.



② To select a desired program, press **[▶▶TRACK]** or **[◀◀TRACK]** corresponding times to go forward (up to 9) or backward (up to 8).



Ex1. To select the current program again, press **[3]**(TPS) and **[◀◀TRACK]**.



Ex2. To select the last program, press **[3]**(TPS) and **[◀◀TRACK]** twice.



Ex3. To select the next program, press **[3]**(TPS) and **[▶▶TRACK]**.



Ex4. To select the next 3rd program, press **[3]**(TPS) and **[▶▶TRACK]** three times.



③ Press **[3]**(TPS) again to cancel.

Notes:

The TPS mode may not work correctly in the following cases. This, however, does not mean that the unit is defective.

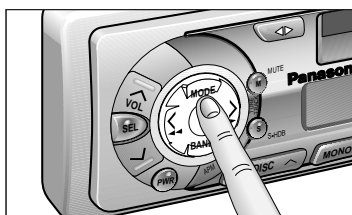
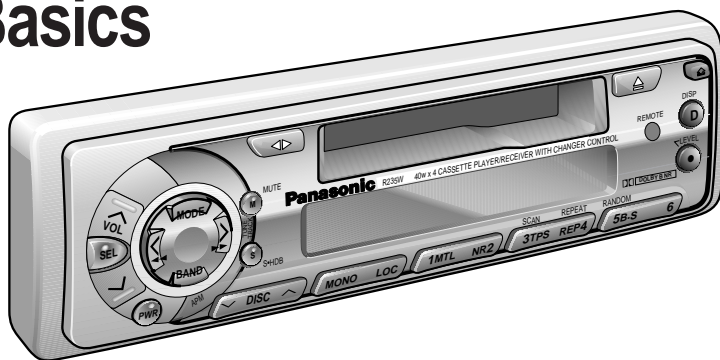
- There is an interval less than 4 seconds or having a high level of noise or hum between programs.
- There is particularly low-level passage during the program.

Notes:

- To maintain your cassette player in top condition, avoid using tapes that are longer than 90 minutes (C-90).
- If you insert into the unit a cassette with a loose tape caused by forcing it into cassette with a finger or the like, the cassette may not be properly reproduced. In such a case, eject the cassette, make the tape tight, then insert it back into the deck.

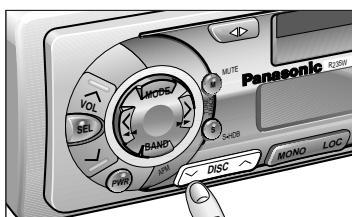
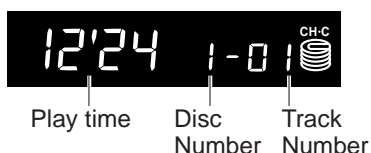
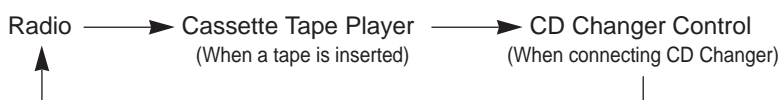
CD Changer Basics

Note: CD changer functions are designed for an optional CD changer unit.



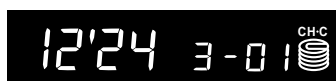
Starting the CD Changer

Once the CD changer has been connected, press **[MODE]** to change to the CD changer mode as follows. When a disc magazine is inserted, CD play starts automatically.

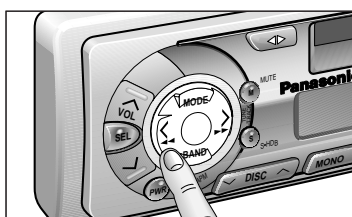


Disc Selection

Press **[V/DISC]** or **[^/DISC]** to select a disc in descending or ascending order.

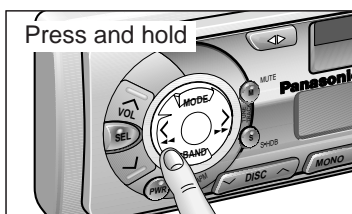


Then, the selected disc will start to play from the first track.



Track Selection

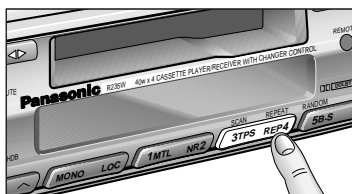
- Press **[▶▶TRACK]** to advance to the next track.
- Press **[◀◀TRACK]** to start play from the beginning of the track now playing.
- Press **[▶▶TRACK]** or **[◀◀TRACK]** repeatedly to skip the desired number of tracks.



Track Search

- Press and hold **[▶▶TRACK]** or **[◀◀TRACK]** for more than 0.5 seconds to activated fast forward or reverse.
- Release **[▶▶TRACK]** or **[◀◀TRACK]** to resume regular CD changer play from the released position.

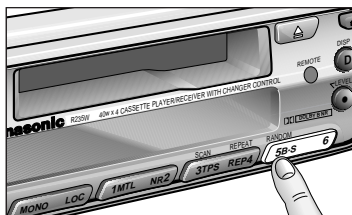
CD Changer Basics (continued)



Track Repeat

- Press [4](REPEAT) to repeat the current selection.
- Press [4](REPEAT) again to cancel.

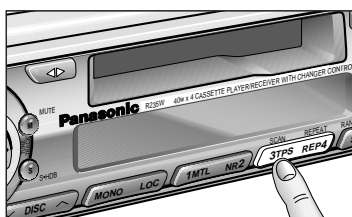
REPEAT



Random Selection

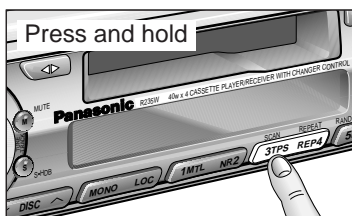
- Press [5](RANDOM). All the available tracks on all discs in the magazine will be played in a random sequence.
- Press [5](RANDOM) again to cancel.

RANDOM



Track Scan

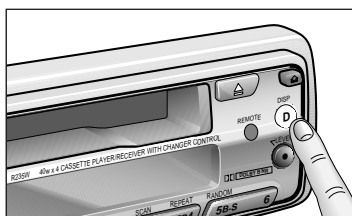
- Press [3](SCAN). The display blinks and the first 10 seconds of each track on the discs play in sequence.
- Press [3](SCAN) again to cancel.



Press and hold

Disc Scan

- Press and hold [3](SCAN) for more than 2 seconds. The 1st track of all the discs in the magazine is played for 10 seconds each.
- Press and hold [3](SCAN) for more than 2 seconds again to cancel.



Changing the Display

Press [D](DISP) to switch the display as follows.

Play Time/Disc/Track \longleftrightarrow Clock display

Note: You cannot change the current display while the CD changer is set to the scan play mode.

Error Display Messages

E1

Appears on the display when the compact disc is dirty or inverted. Selects the next available compact disc.

E2

Appears on the display when compact disc is scratched. Selects next available compact disc.

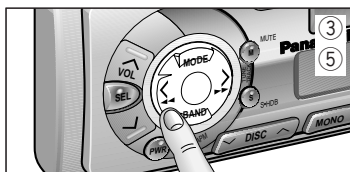
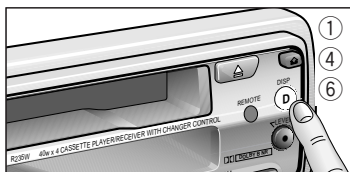
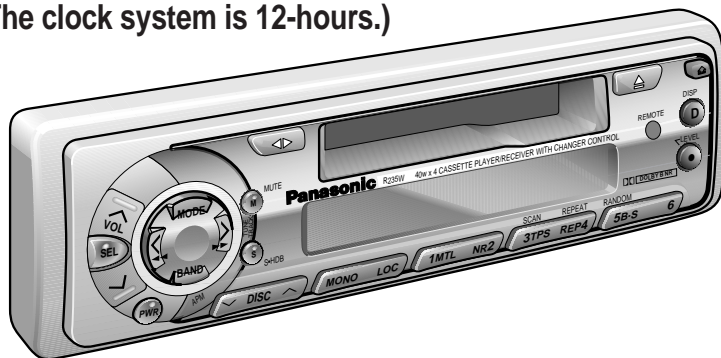
E3

Appears on the display when the compact disc stops operating for some reason. Please turn off the car engine (ACC off) and remove the fuse from yellow lead for 1 minute. Then reinstall the fuse.

0000

Appears on the display when there is no disc in the magazine.

Clock Basics (The clock system is 12-hours.)



Initial Time

- ① Press **[D](DISP)**. "Adj" appears on the display.
- ② Press and hold **[D](DISP)** again for more than 2 seconds. "12" blinks, and the time setting mode is activated.
- ③ Press **[<TUNE]** or **[>TUNE]** to set the hour.
- ④ Press **[D](DISP)** again to proceed with the minutes setting.
- ⑤ Press **[<TUNE]** or **[>TUNE]** to set the minute.
Press and hold **[<TUNE]** or **[>TUNE]** for more than 0.5 seconds to change numbers on the display in sequence.
- ⑥ Once the time has been set, press **[D](DISP)**.

Adj

12:00

8:00

8:15

8:15

Note: The **[D](DISP)** button will not work while the CD changer is set to the scan play mode. Cancel the scan play mode before pressing **[D](DISP)**.

Time Reset

Press and hold **[D](DISP)** for more than 2 seconds to activate the time setting mode to reset the time. Then, repeat step ③ to ⑥ above.


Clock Display

Press **[D](DISP)**.

Anti-Theft System

This unit is equipped with a removable face plate. By removing this face plate, the radio becomes totally inoperable. The security indicator will blink.

To Remove the Removable Face Plate

- ① Switch off the power.
- ② Press the release button (). The removable face plate will be released.

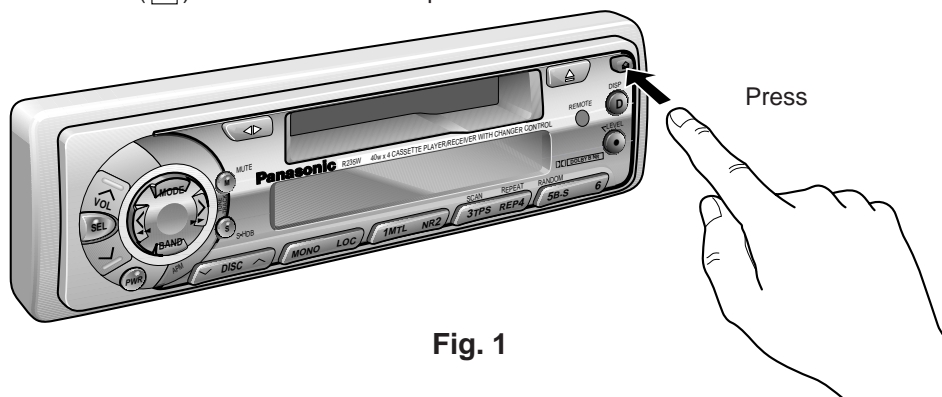


Fig. 1

- ③ Remove the removable face plate by pulling on the right side of the unit. Place the removable face plate in a supplied case.

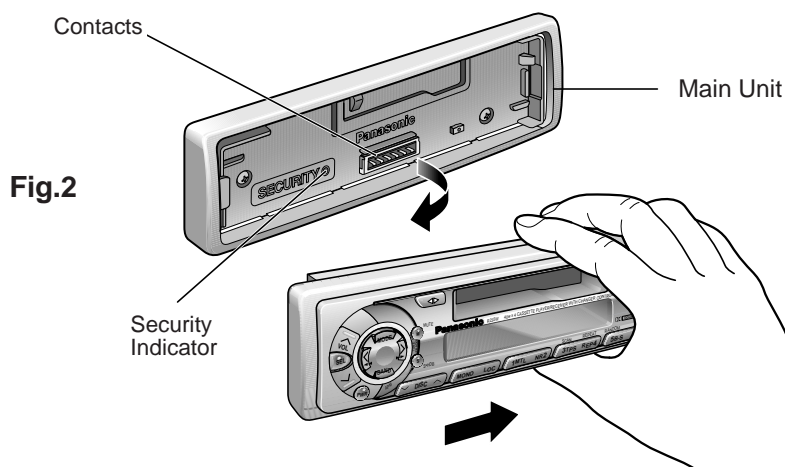


Fig.2

- ④ As shown in Fig. 3, gently push the lower side of the case and open its cover. Keep the face plate in the case. Then, you can safely take the plate with you.

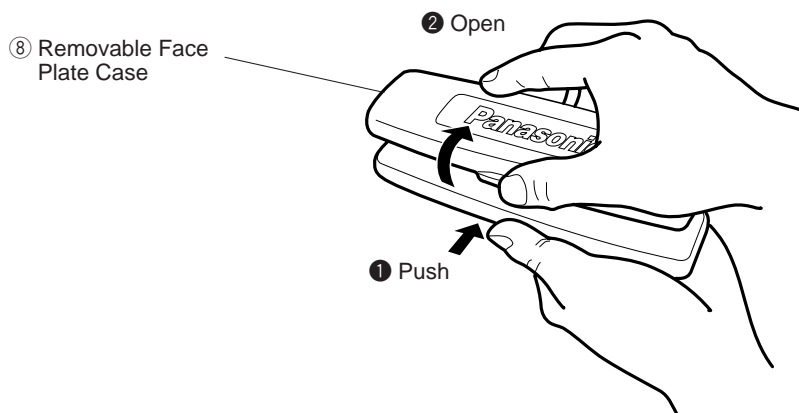


Fig. 3

To Install the Removable Face Plate

- ① Slide the left side of the removable face plate in place.

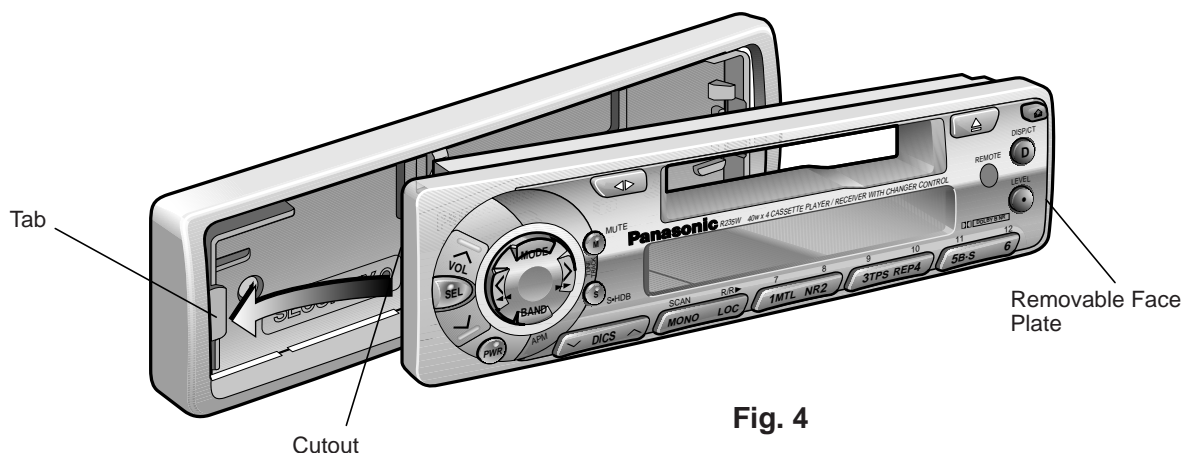


Fig. 4

- ② Press the right end of removable face plate until a "click" is heard.

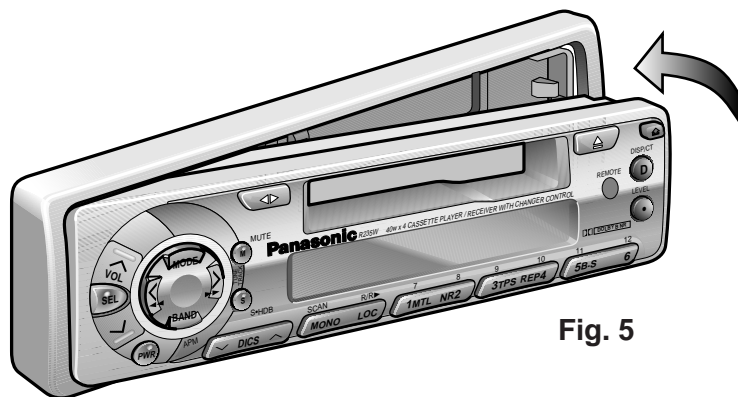


Fig. 5

Cautions:

1. Before removing the face plate, make sure the power is off.
2. This face plate is not water-proof. Do not expose it to water or excessive moisture.
3. Do not remove the face plate while driving your car.
4. Do not place the face plate on the dashboard or nearby areas where the temperature rises to high levels.
5. Do not touch the contacts on the face plate or on the main unit, since this may result in poor electrical contacts.
6. If dirt or other foreign substances get on the contacts, wipe them off with clean and dry cloth.

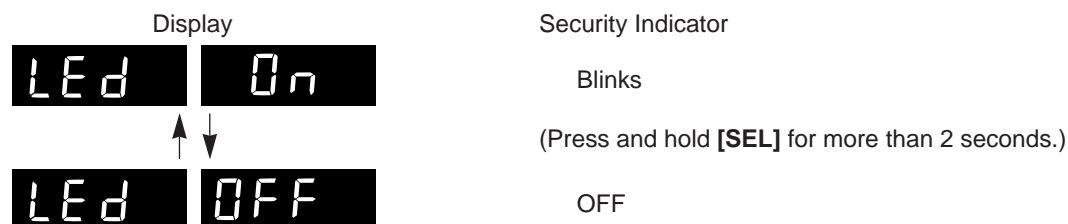
Anti-Theft System (continued)

Security Indicator

The security indicator blinks when the removable face plate is removed from the unit. (See Fig. 2 on the page 14.)

Activate Security Indicator

Press and hold **[SEL]** for more than 2 seconds when the power is ON. "LEd" "On" is displayed, and the security indicator turns ON. (**Default:** LED ON)



Caution: When you want to remove the unit, the security indicator functions can be canceled by the following procedure.

- Install the removable face plate.
- Disconnect the power connector for more than 3 minutes and then reconnect it.

Preparation

- Before installation, check the radio operation with antenna and speakers.
- Disconnect the cable from the negative (–) battery terminal (see caution below).
- Unit should be installed in a horizontal position with the front end up at a convenient angle, but not more than 30°.

Caution: For installation to cars with trip or navigational computers, all electronic memory settings previously registered in the computer will be lost when the battery terminal is disconnected. For this type of car, battery could not be disconnected. Therefore, extra care should be taken to prevent short circuiting.

In-dash Installation

Installation Opening

In-dash installation can be done if the car's dashboard has an opening for this unit as shown in Fig. 6. The car's dashboard should have a thickness of 4.75 mm - 5.56 mm in order to make the installation of the unit.

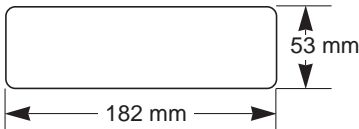


Fig. 6

Installation Precautions

This product, if possible, should be installed by a professional installer.

In case of difficulty, please consult your nearest authorized Panasonic Service Center.

1. This system is to be used only in a 12-volt, DC battery system (car) with negative ground.
2. Follow the electrical connections on page 20 carefully. Failure to do so may result in damage to the unit.
3. Connect the power lead (red) after all other connections are made.
4. Be sure to connect the battery lead (yellow) to the positive terminal (+) of the battery or fuse block (BAT) terminal.
5. Insulate all exposed wires to prevent short circuiting.
6. Secure all loose wires after installing the unit.
7. Please carefully read the operating and installation instructions of the respective product before connecting it to this unit.

Supplied Hardware

No.	Item	Diagram	Q'ty
①	Mounting Collar		1
②	Hex. Nut (5 mmφ)		1
③	Rear Support Strap		1
④	Tapping Screw (5 mmφ x 16 mm)		1

No.	Item	Diagram	Q'ty
⑤	Mounting Bolt (5 mmφ)		1
⑥	Power Connector		1
⑦	Dismounting Plate		1
⑧	Removable Face Plate Case		1

Installation (continued)

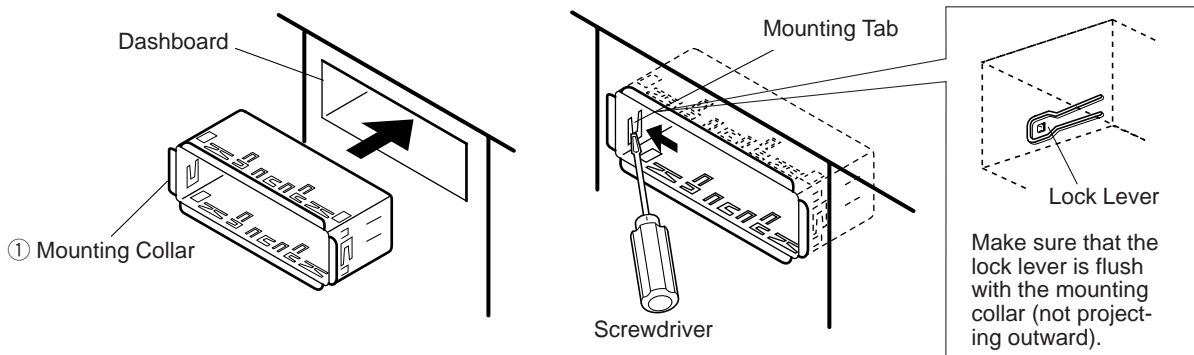
- When bending the mounting tab of the mounting collar with a screwdriver, be careful not to injure your hands and fingers.
- We strongly recommend you to wear gloves for installation work to protect yourself from injuries.

Installation Procedures

Note: Disconnect the cable from the negative (–) battery terminal.

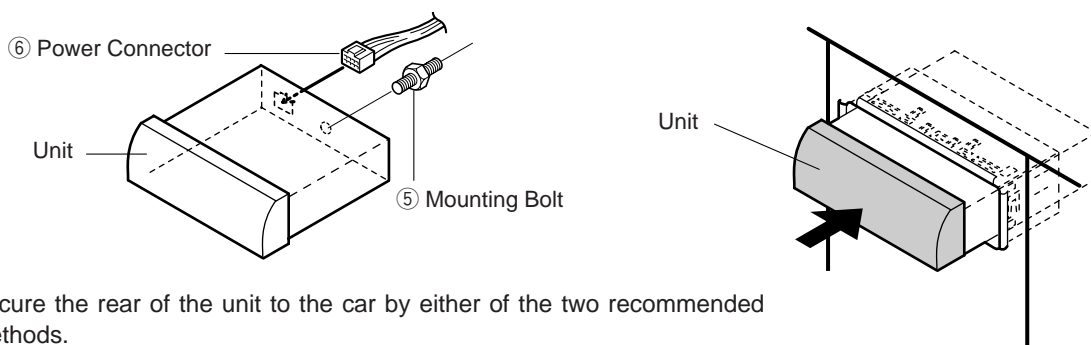
1. Secure the Mounting Collar ①.

Insert Mounting Collar ① into the dashboard, and bend the mounting tabs out with a screwdriver.



2. Secure the rear of the unit.

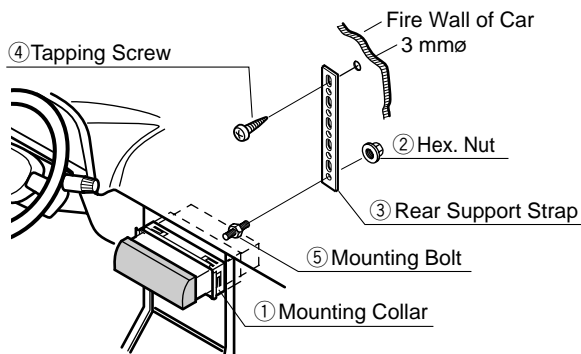
- Check the electrical connections by referring to this operating instructions.
- Connect Mounting Bolt ⑤, using a suitable wrench.
- Insert Power Connector ⑥ to the unit.
- Insert the unit into Mounting Collar ① and push it in until a "click" is heard.



- Secure the rear of the unit to the car by either of the two recommended methods.

• Using the Rear Support Strap ③

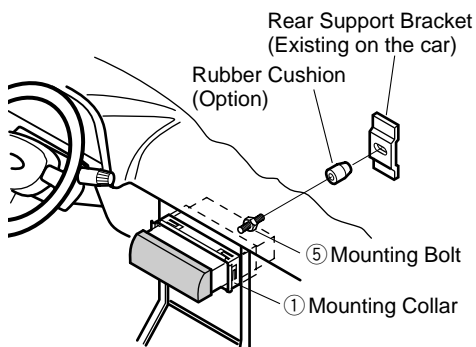
Affix one end of the Rear Support Strap ③ to the rear of the unit, and the other end to the fire wall of car, or some other metallic area.



• **Using the Rubber Cushion (Option)**

(If there is an existing Rear Support Bracket on the fire wall of car.)

Cover Mounting Bolt ⑤ on the rear of the unit with Rubber Cushion, and mount it into the existing Rear Support Bracket.

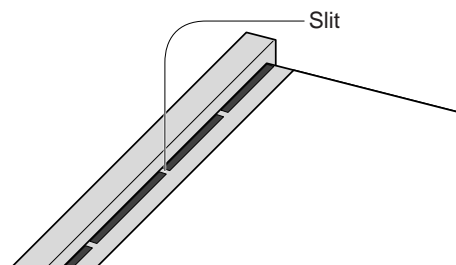


3. After installation reconnect the negative (-) battery terminal.

To remove the trim plate (for Japanese Cars)

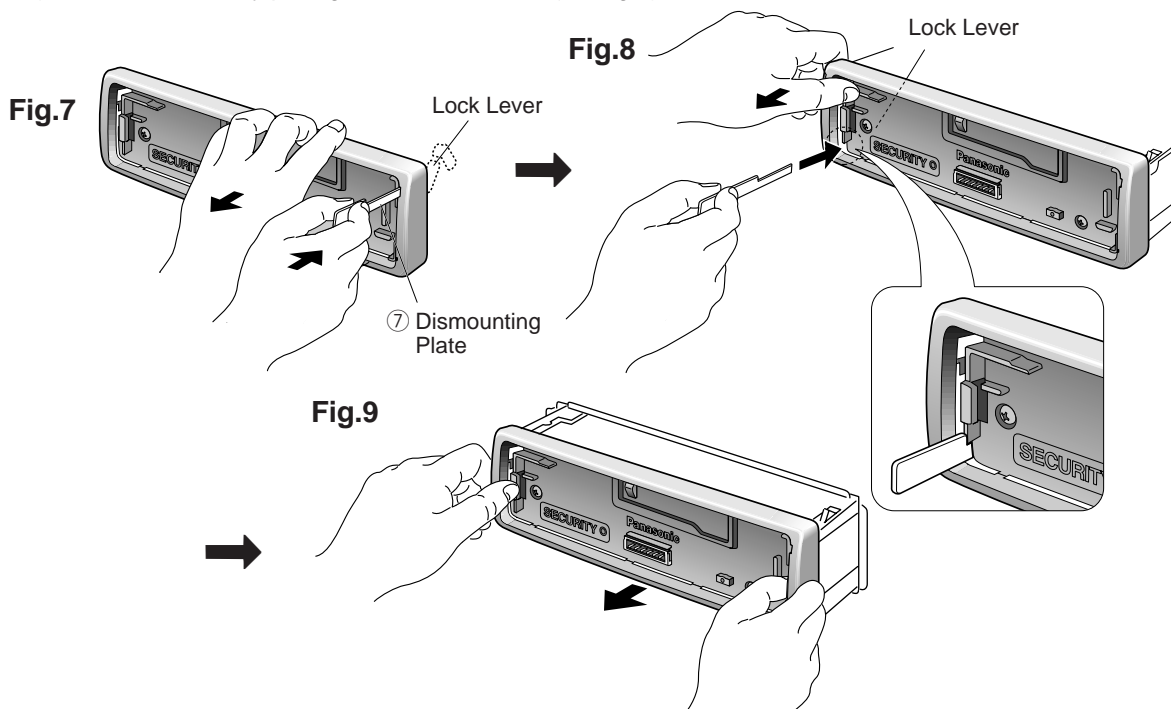
You may not be able to install this unit in some makes of Japanese cars. In such a case, consult your dealer or professional installer.

To mount this unit on a Japanese car, first cut the 9 slits in back of the trim plate with side-cut pliers, remove the trim plate, then mount this unit.



To Remove the Unit

- Remove the removable face plate. (→ Page 14.)
- Pull out the unit while pushing the lock lever using Dismounting Plate ⑦. (→ Fig.7, 8)
- Remove the unit by pulling it with both hands. (→ Fig.9)



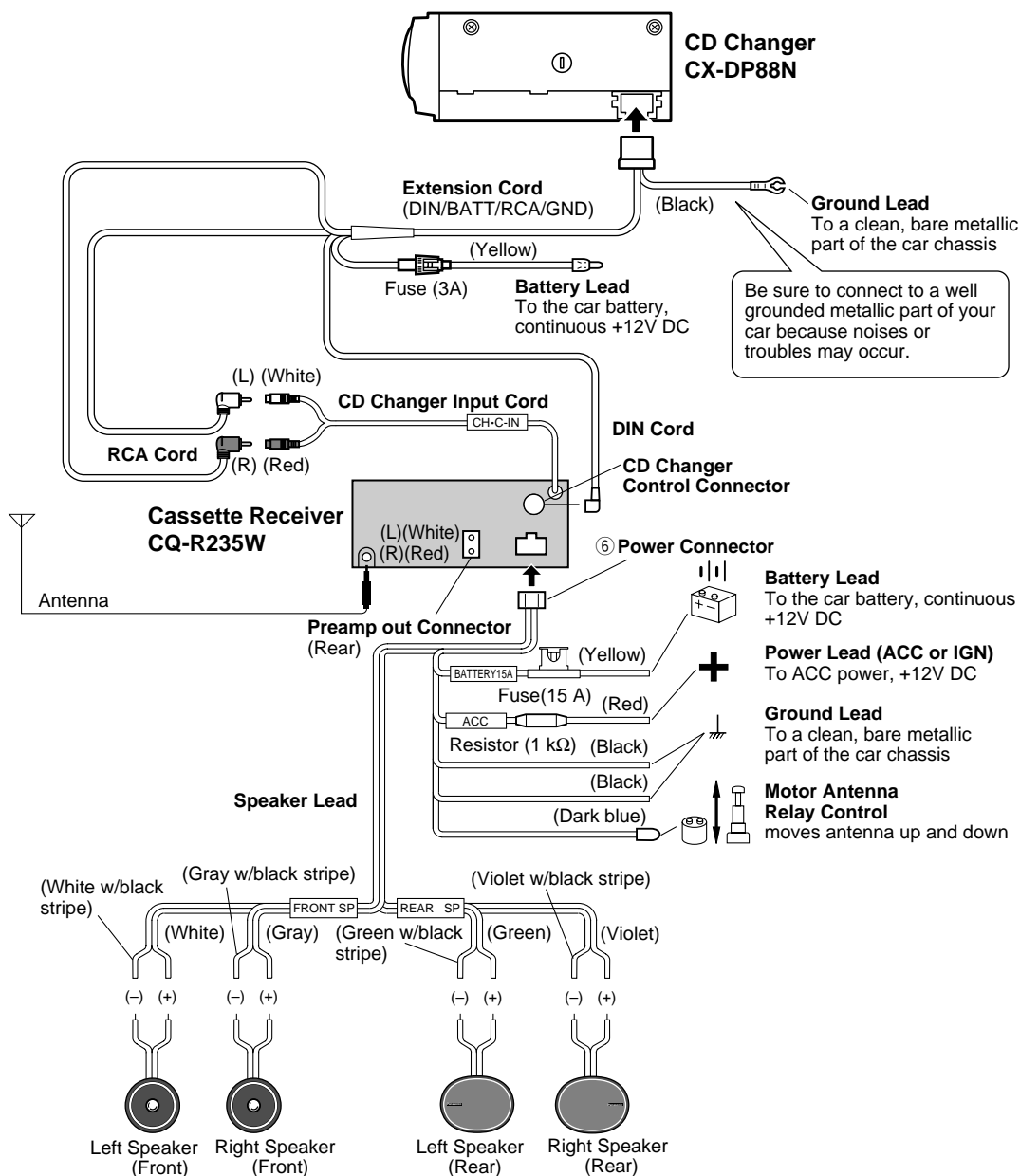
Note: Do not lose the Dismounting Plate. It will be needed to remove the unit from the car's dashboard.

Electrical Connection

Cautions:

- This product is designed to operate of a 12 volt, negative ground battery system.
- To prevent damage to the unit, be sure to follow the connection diagram below.
- Remove approx. 5 mm of protective covering from the ends of the leads before connecting.
- Do not insert the power connector into the unit until the wiring is completed.
- Be sure to insulate any exposed wires from a possible short-circuit from the car chassis. Bundle all cables and keep cable terminals free from touching any metal parts.

- This unit can be connected to an optional CD changer (CX-DP88N etc.). For details consult your nearest authorized Panasonic dealers.
- For connection to a CD changer, refer to the operating instructions of the CD Changer (CX-DP88N etc.).

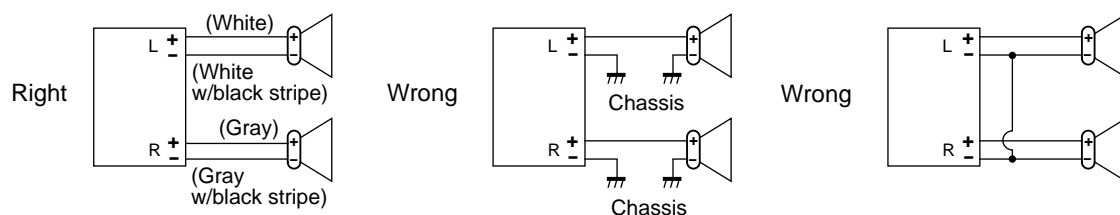


Speaker Connections

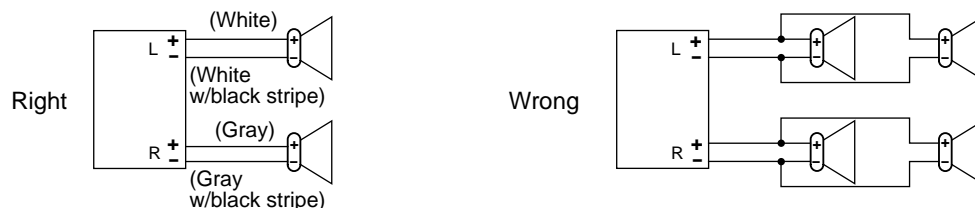
Cautions:

1. Use ungrounded speakers only.
2. The speakers to be used with this unit should be able to handle more than 40 W of audio power. If an optional amplifier is used, the speakers should be able to handle the maximum output power of the amplifier. Use of speakers with small input ratings can cause damage to the speakers.
3. The speaker impedance should be 4 - 8 Ω . If the impedance is too large or too small, it affects the output and may cause damage to the speakers or this unit.
4. Do not use 3-wire type speaker system having a common earth lead. Never connect the speaker cord to the body of the car. This unit uses the BTCL circuit, so each speaker should be connected separately using parallel vinyl insulated cords.
5. The speaker cords and the power amplifier unit should be kept away (about 30 cm apart) from the antenna and antenna extension cord.
6. Follow the connection diagram below carefully. Failure to do so may cause damage to both unit and speakers.

- Unit will be damaged if speakers (Front, Rear) are not connected properly.



- Do not connect more than one speaker to one set of speaker leads.



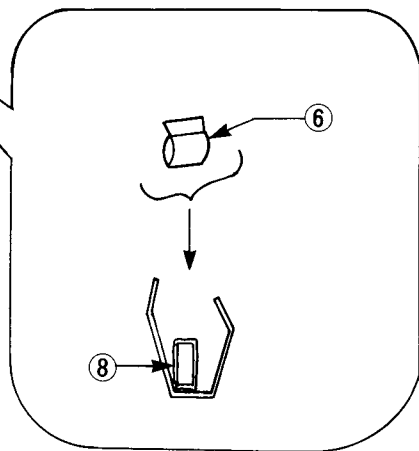
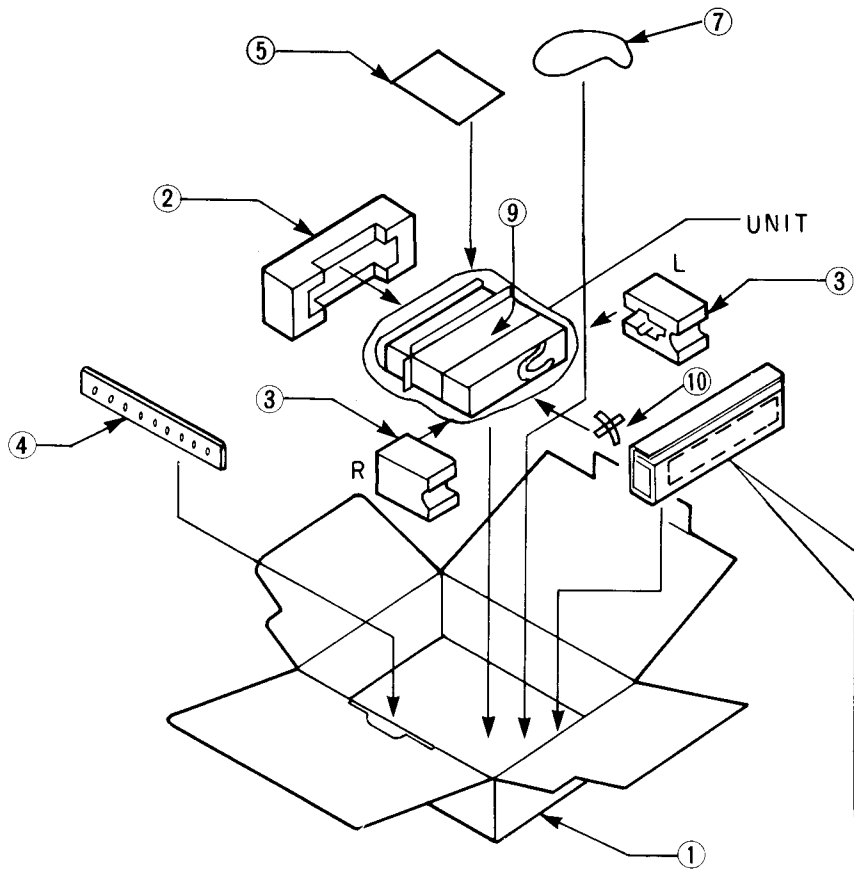
Fuse

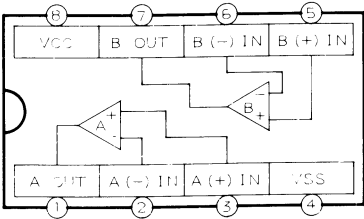
Use fuses of the same specified rating (15 A). Using different substitutes or fuses with higher ratings, or connecting the unit directly without a fuse, could cause fire or damage to the unit.

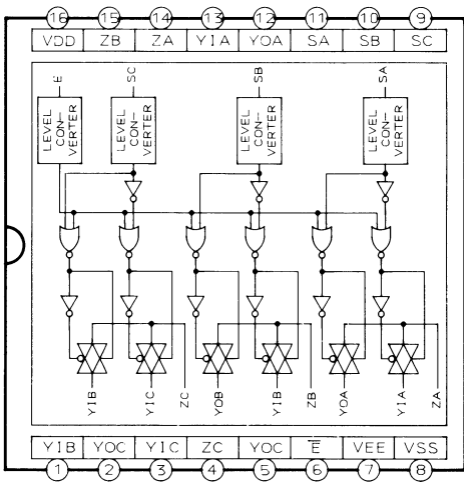
If the replacement fuse fails, contact your nearest authorized Panasonic Service Center.

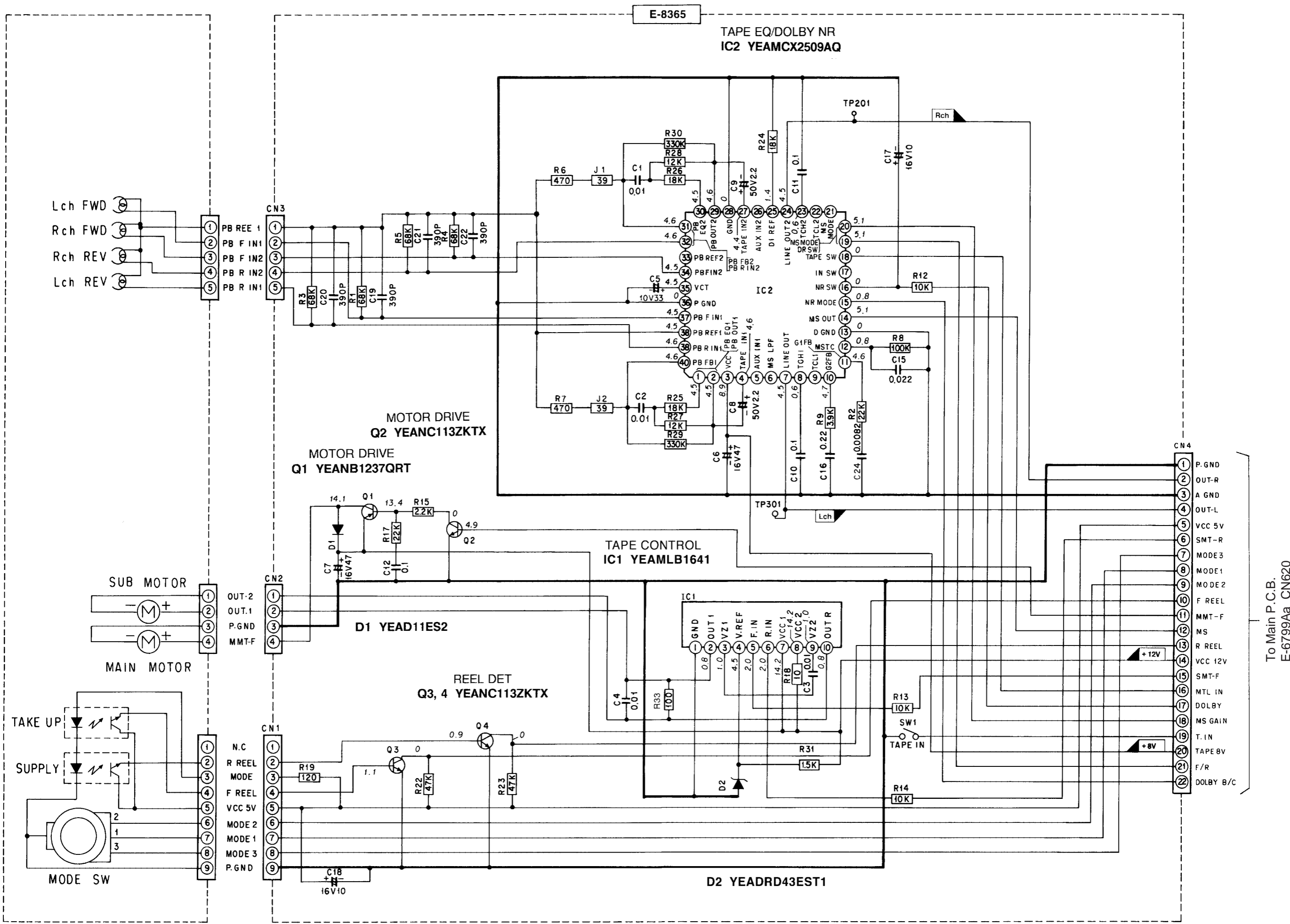
Maintenance

Your product is designed and manufactured to ensure the minimum of maintenance. Use a soft cloth for routine exterior cleaning. Never use benzine, thinner, or other solvents.





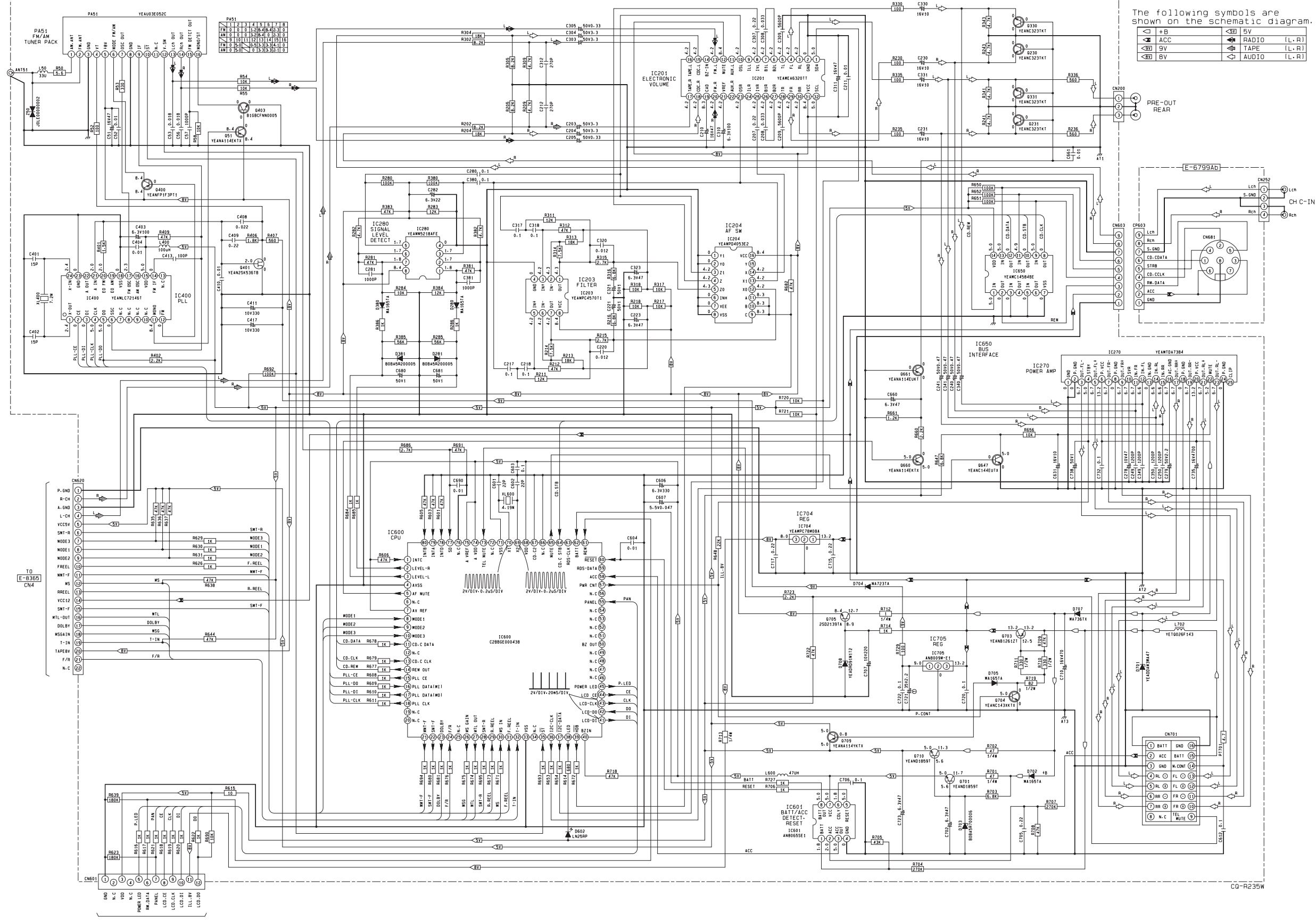




To Main P.C.B.
E-6799Aa CN620

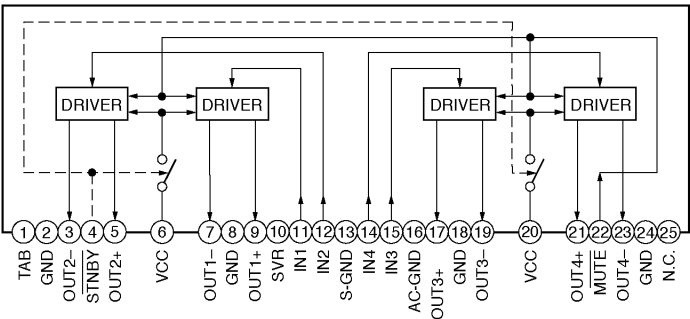


8V	8V
5V	5V

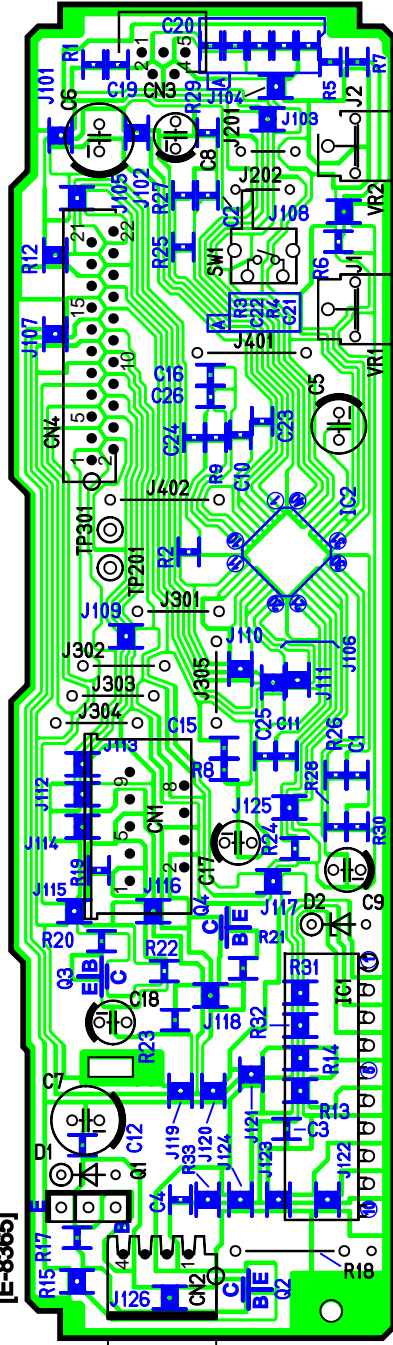


The following symbols are shown on the schematic diagram.

	+B		RADIO (L.R)
	ACC		TAPE (L.R)
	9V		AUDIO (L.R)
	BV		



[E-8365]



Tape Head

