

Private and Confidential



For Trade Use Only

"HIS MASTER'S VOICE"
SERVICE MANUAL

f o r

A.C. MAINS - OPERATED AMPLIFIER CHASSIS
TYPE C2

•

THE GRAMOPHONE COMPANY LIMITED
2 PARRAMATTA ROAD
HOMEBUSH - N.S.W.

•

PART No. 682-7551

TECHNICAL SPECIFICATION

POWER SUPPLY:

200 to 250 volts at 50 c.p.s.

CONSUMPTION:

19 watts.

OUTPUT IMPEDANCE:

3.7 ohms at 400 c.p.s.

VALVE/RECTIFIER COMPLEMENT:

1 6BM8 Valve

1 C3B Rectifier.

CIRCUIT DESCRIPTION

This chassis is a one-valve plus rectifier mains-operated electrogram incorporating a four-speed record player.

A.F. AMPLIFIER

Output from the pickup is fed via volume control RV1 to V1A. Bass boost is provided by R2—C2 and a tapped volume control is used for tone compensation at low levels. The bias of V1A is provided by the cathode resistor R5, together with the bleeder resistor R3.

POWER OUTPUT

V1B is transformer coupled to the loudspeaker via T1. Negative voltage feedback from the secondary of T1 is applied to the cathode of V1A.

POWER SUPPLY

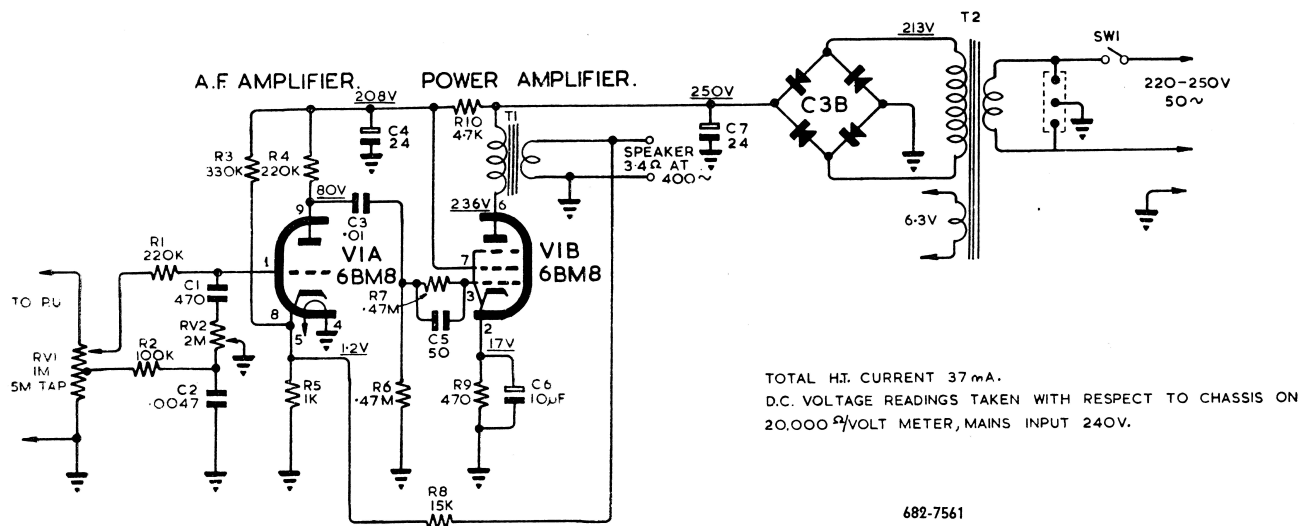
H.T. voltage is supplied by a bridge rectifier. A resistance capacitance filter supplies anode voltage and partial cathode bias to V1A.

ADDITIONAL DATA

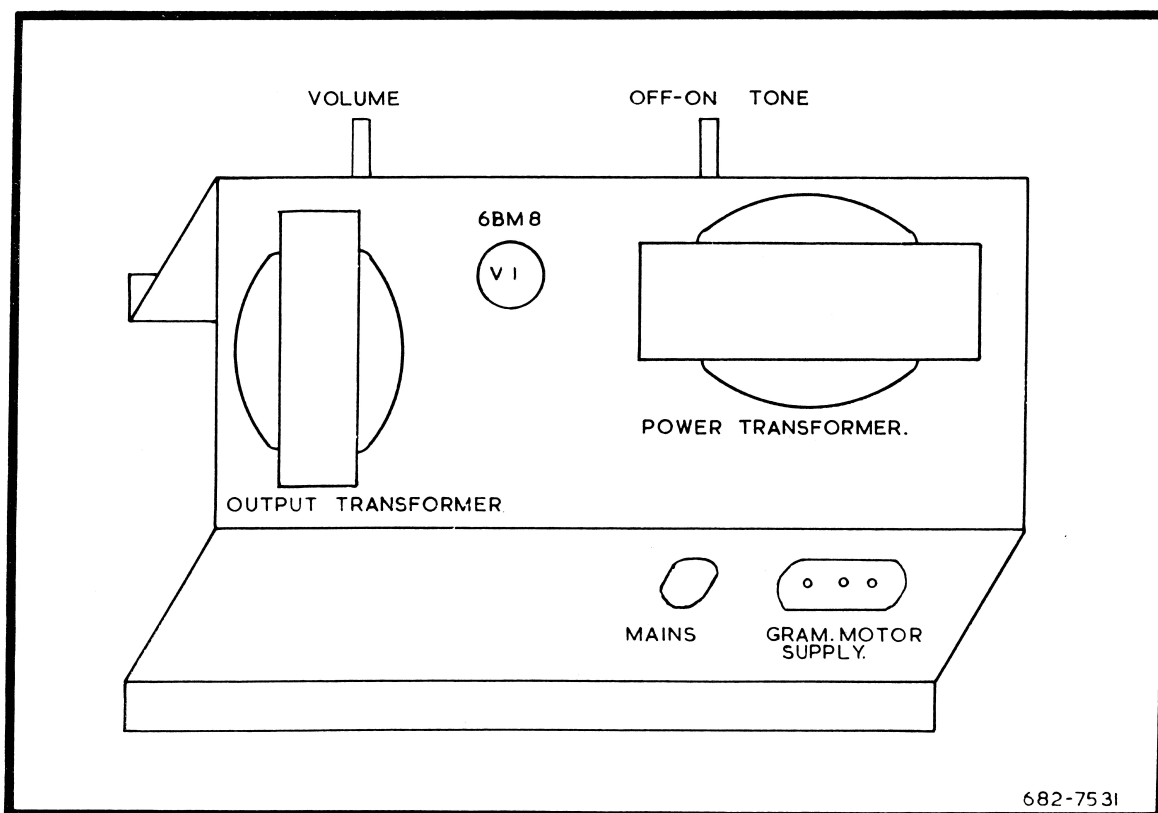
Any further service information may be obtained by addressing an inquiry to the "Service Division, E.M.I. (Australia) Limited, 575-577 Parramatta Road, Leichhardt." Telephone: LM 1491.

During the course of production of this instrument, the Company reserves the right, without notice, to make any modification or improvements in design which may be necessary to meet prevailing conditions.

Information concerning changes which is likely to be of benefit to retailers and servicemen will be notified, as far as possible, by issuing a Technical Data Sheet.



CIRCUIT DIAGRAM — CHASSIS TYPE C2



VALVE LOCATION DIAGRAM — CHASSIS TYPE C2

PARTS LIST — CHASSIS TYPE C2

RESISTORS

REF	PART No.	DESCRIPTION
R1	740-0162	220,000 ohms $\pm 10\%$ $\frac{1}{2}$ Watt
R2	740-0142	100,000 ohms $\pm 10\%$ $\frac{1}{2}$ Watt
R3	742-0152	330,000 ohms $\pm 10\%$ 1 Watt
R4	742-0132	220,000 ohms $\pm 10\%$ 1 Watt
R5	740-0022	1,000 ohms $\pm 10\%$ $\frac{1}{2}$ Watt
R6	740-0622	470,000 ohms $\pm 20\%$ $\frac{1}{2}$ Watt
R7	740-0622	470,000 ohms $\pm 20\%$ $\frac{1}{2}$ Watt
R8	740-0092	15,000 ohms $\pm 10\%$ $\frac{1}{2}$ Watt
R9	748-0102	470 ohms $\pm 10\%$ 1 Watt
R10	742-0022	4,700 ohms $\pm 10\%$ 1 Watt

CAPACITORS

REF	PART No.	DESCRIPTION
C1	280-1831	470 pF. $\pm 10\%$ 600V.
C2	280-0331	0.0047 mF. $\pm 10\%$ 200V.
C3	280-1371	0.01 mF. $\pm 20\%$ 400V.
C4	269-0111	24 mF. 350 P.V.
C5	273-0041	47 pF. $\pm 10\%$
C6	269-0051	10 mF. 40 P.V.
C7	269-0111	24 mF. 350 P.V.

MISCELLANEOUS

REF	PART No.	DESCRIPTION
T1	904-0282	Transformer—Mains
T2	905-0311	Transformer—Output
RV1	677-0691	Volume Control 1 Meg.
RV2	677-0502	Tone Control with switch 2 Meg.
V1	932-0511	Valve 6BM8
	932-1061	Rectifier C3B