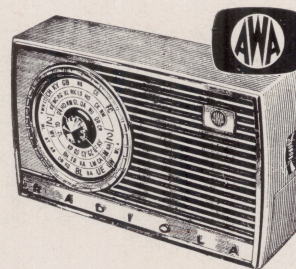


## TECHNICAL INFORMATION AND SERVICE DATA



### **AWA RADIOLA SEVEN-TRANSISTOR PORTABLE MODEL B24Z**



ISSUED BY  
AMALGAMATED WIRELESS (AUSTRALASIA) LTD.

### **GENERAL DESCRIPTION**

This is a seven-transistor, battery-operated superheterodyne portable receiver designed for the reception of the Medium Wave Band.

It is identical with Model B24, which it replaces, and incorporates a socket for use with a battery saver such as type PS9.

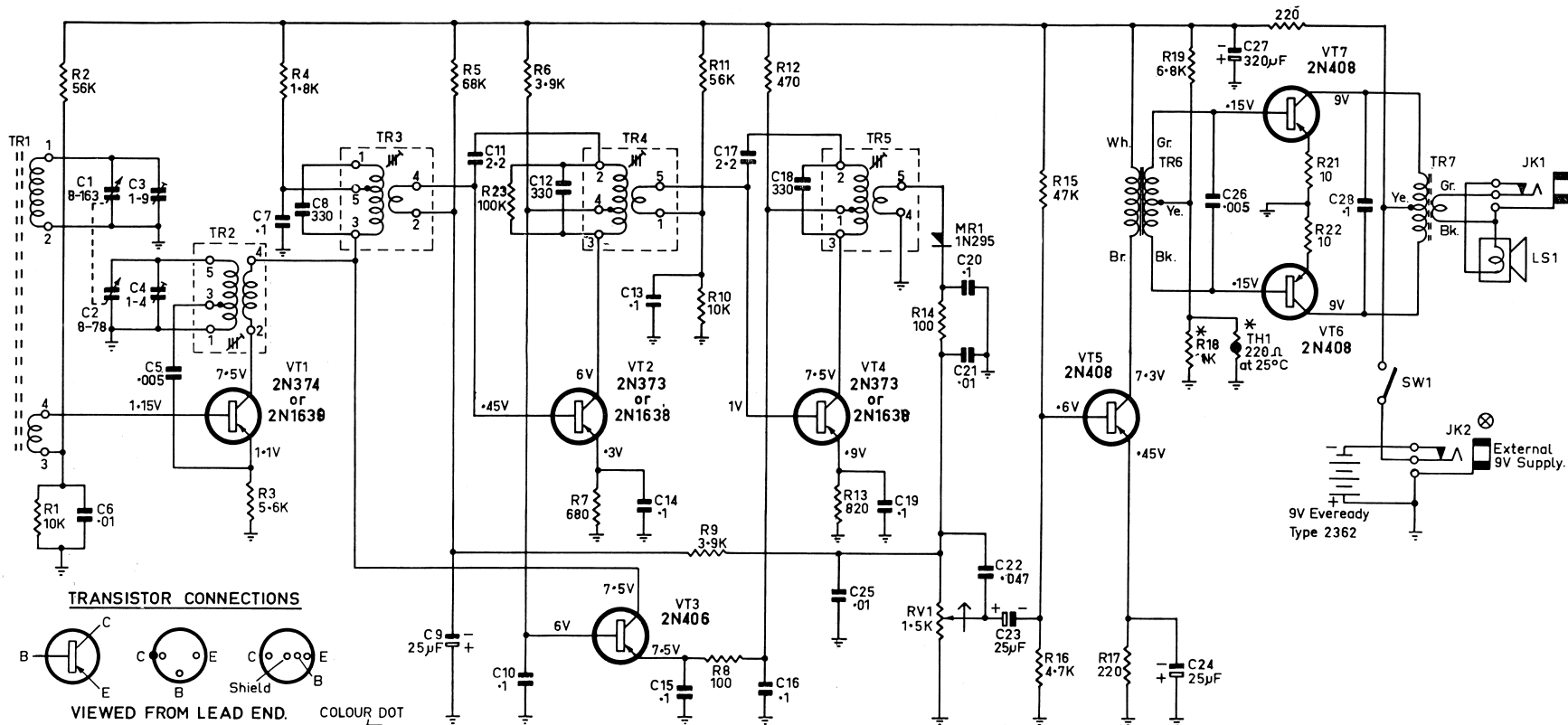
---

### **ELECTRICAL AND MECHANICAL SPECIFICATIONS**

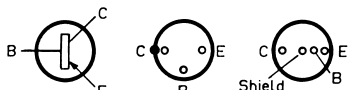
This receiver is identical with Model B24 with the exception of the provision for operating from a battery saver power supply.

The modification to accomplish this consists of mounting a bracket (63839) containing a jack (417405) on the component side of the board above the volume control. To make way for this assembly it has been necessary to re-locate the 220 ohms resistor (R17) onto the printed board side. The cabinet back, unchanged in part number, now contains a hole for access to the jack. This will mean that replacement backs for B24 will also contain this hole.

The electrical changes in the circuitry to cover this modification will be seen in the diagram over.

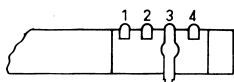


#### TRANSISTOR CONNECTIONS



VIEWED FROM LEAD END.

COLOUR DOT



TR1

#### BASE CONNECTIONS



TR2 - TR3

#### NOTES :-

ARROW ON POTENTIOMETER INDICATES DIRECTION OF CLOCKWISE ROTATION.

VOLTAGES MEASURED WITH 20,000 OHM/VOLT METER WITH NO SIGNAL INPUT.

ALL VOLTAGES NEGATIVE WITH RESPECT TO PRINTED BOARD EARTH (BATTERY POSITIVE TERMINAL.)

\* TH1 MAY BE 270Ω AT 25°C IN WHICH CASE R18 BECOMES 330

R23 MAY VARY SELECTED IN PRODUCTION.

⊗ JK2 USED ON B24Z ONLY.