

# RADIOOLA 46<sup>E</sup>

**NEW STANDARD OF**

**PERFORMANCE!**

**NEW CONCEPTION**

**OF VALUE!**





# TONE



## Performance Value

**Y**OU have but to listen to its pure, clear, lifelike tone—to inspect its sturdy construction—to realise how faithfully A.W.A.'s radio engineers have carried out their task in designing such an efficient, all-electric radio.

The Radiola 46E is suitable for local and interstate reception and can be plugged into any electric light or power socket in your home.

See the Radiola at your nearest Radiola Dealer. Hear its wonderful performance . . . see its beautiful appearance and high quality, and you will be convinced of its amazing value.

£27/10.

*Easy Terms Available.*

LESS (A/ASIA) LIMITED





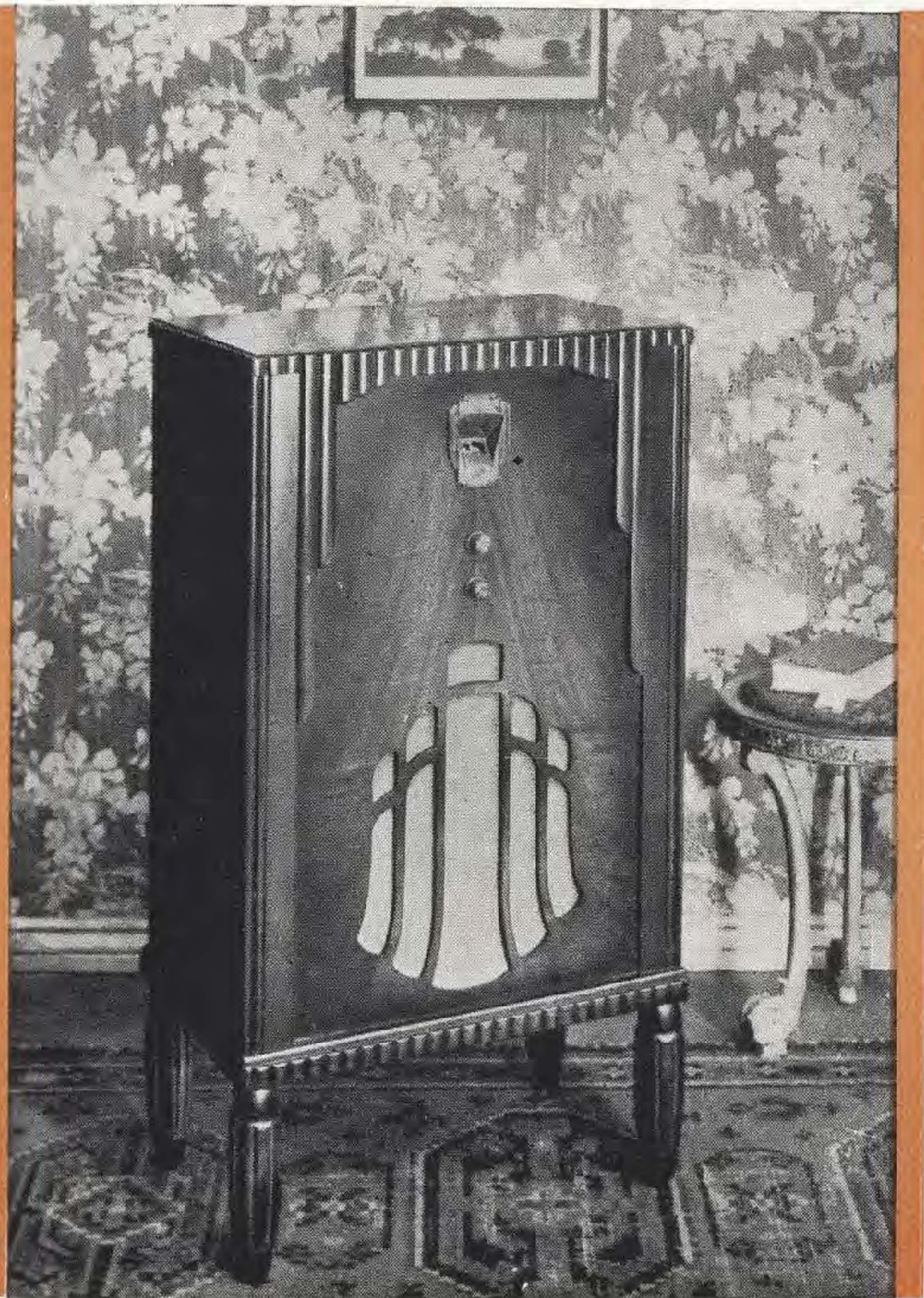
The "FISK" Series

# RADIOOLA 46<sup>E</sup>

**T**HE Radiola 46E is suitable for both local and interstate reception; has a high degree of selectivity, and possesses exceptionally fine tonal quality.

It utilises five Radiotrons, including a Pentode power valve.

Other features are perfect acoustic synchronisation; minimum controls—the volume control and power switch being combined; and new A.W.A. dynamic speaker affording maximum tonal range. For ease in station finding the tuning control is calibrated in metres and kilocycles.



The modern, artistically designed cabinet is a beautiful example of the cabinet-maker's craftsmanship. Cabinet measurements: 37 $\frac{1}{4}$ in. high by 20 $\frac{5}{8}$ in. wide by 12 $\frac{7}{8}$ in. deep.

46<sup>E</sup>

PRODUCT OF AMALGAMATED WIR



# **S**PECIFICATION

## of the Radiola 46<sup>E</sup>

**CIRCUIT.**—A.W.A. improved screen grid tuned radio frequency employing three tuned stages, linear power detector and resistance coupled pentode output stage, A.C. operated, 50-60 cycles, 200-260 volts. Chassis pressed from special grade bright finished steel and heavily electroplated in cadmium.

**DYNAMIC SPEAKER.**—Built-in full power corrugated cone, moving coil loudspeaker.

**POWER AMPLIFIER.**—The output stage utilises a Radiotron 247 Pentode, which gives ample reserve power and prevents distortion due to overloading.

**TUNING CONTROL** illuminated and calibrated in metres and kilocycles. The angle of the dial allows of easy tuning in a standing position.

**VOLUME CONTROL.**—Specially graded, which allows smooth, distortionless control.

**VOLTAGE ADJUSTMENT AND SAFETY FUSE.**—Combined voltage adjuster and safety fuse, which allows voltage to be adjusted to suit line, and in addition safeguards set against damage due to overloading.

**FILTER.**—Improved filter design, employing high-grade, high-voltage, electrolytic condensers.

**SPECIAL FITTINGS.**—Provided with phonograph jacks and switch, also four-point loudspeaker receptacle.

**VALVES.**—Two Variable MU 235 Radiotrons, one Radiotron 224A, one 247 Pentode and one Radiotron UX280 Rectifier.



# **O** *The* **ORGANISATION** behind the Radiola

**T**O-DAY, the resources and achievements of the A.W.A. organisation are such that it is the undoubted leader of the industry in Australia and is recognised throughout the world as one of the foremost wireless organisations.

The Company owns, controls and operates the Overseas Wireless Telephony Service; the Beam Wireless, Coastal Radio and Marine Services; and the World-wide Broadcasting Service. It also operates the A.W.A. Radio-Electric Works, the largest and finest equipped wireless works in Australia.

In the field of broadcasting the Company has manufactured and installed the principal broadcasting stations and numerous "B" class stations throughout the Commonwealth.

Little wonder that, backed by such an experienced and efficient organisation, the Radiola should be the finest receiver manufactured in Australia.

