

THE FISK

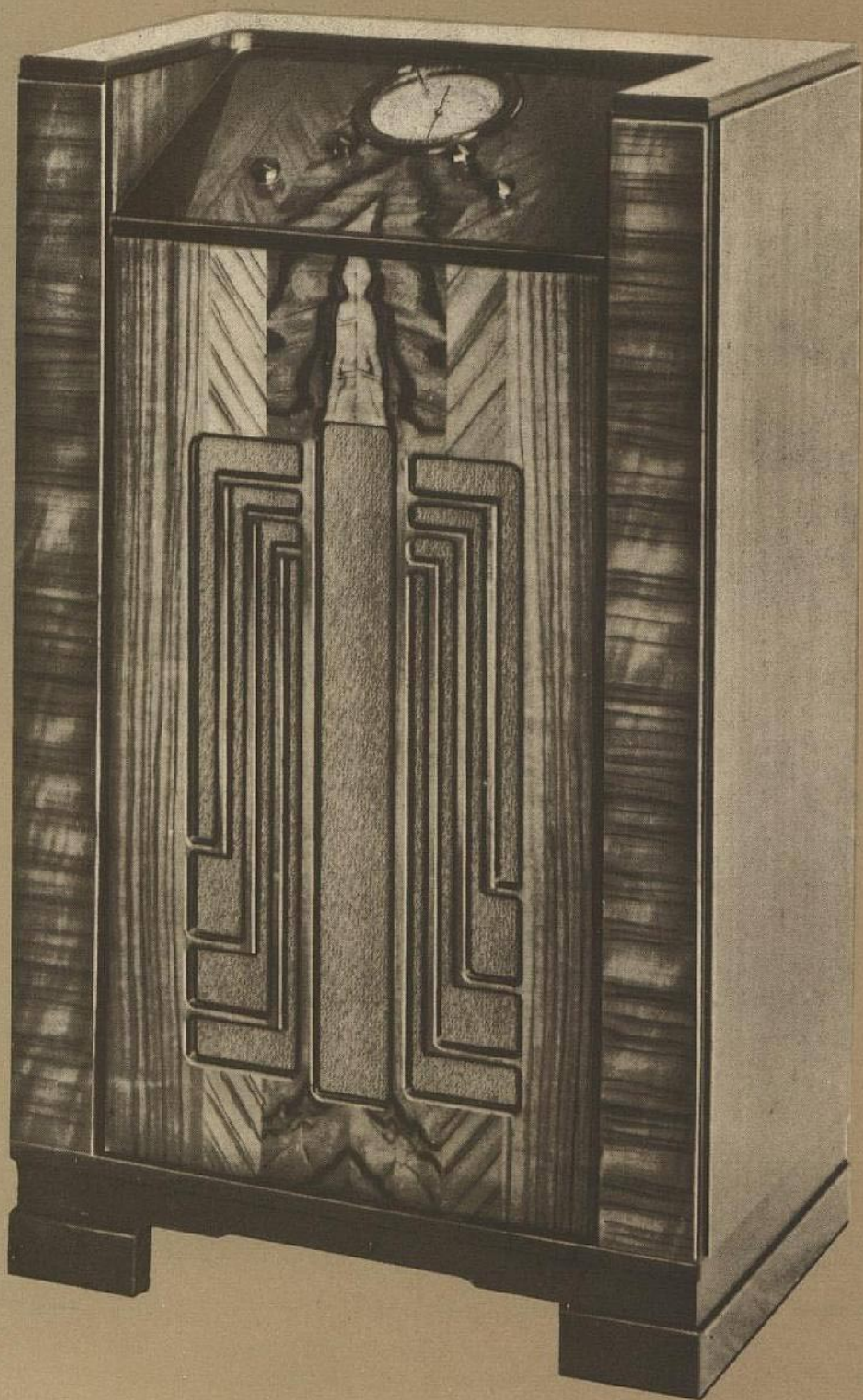
RADIOLA

ALL WAVE
MODEL

240

AMALGAMATED

WIRELESS (A'SIA) LIMITED

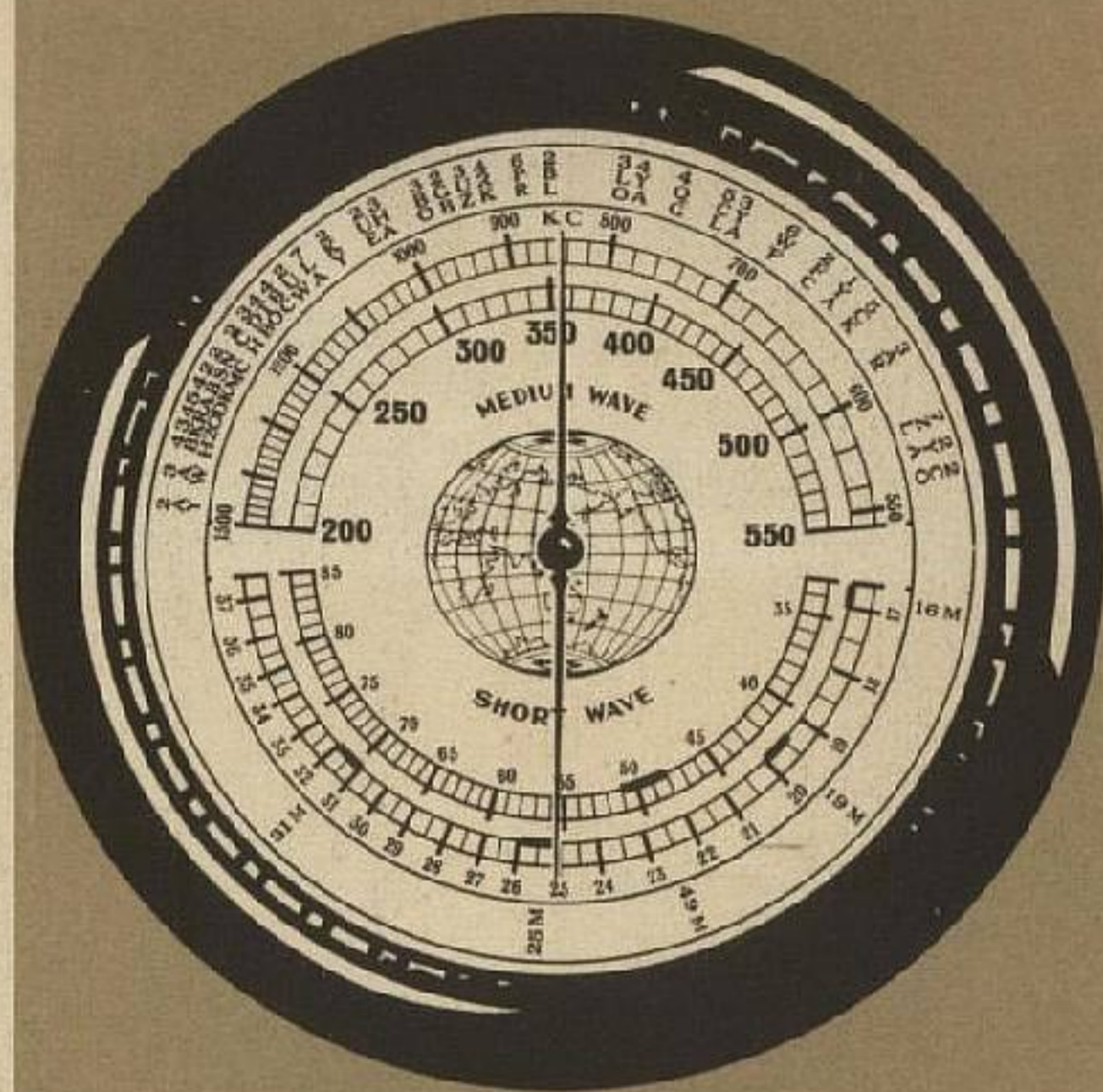


RADIOLA 240

AUSTRALIA'S MOST MODERN AND EFFICIENT ALL WAVE RECEIVER

ROTOVISION TUNING . . .

"Shows at a glance
the Station you want"



Simplified station selection and convenient operation
Australian station call signs clearly marked
Wave lengths calibrated in metres

Features...

- 7 valves (Radiotron types 6D6 (3), 6A7, 6B7, 42, 80).
- Highly selective superheterodyne circuit.
- Automatic volume control.
- High frequency tone control.
- Rotary wave change switch with gold-silver non-oxidising contacts.
- High fidelity moving coil speaker.
- Three wave ranges : $\left\{ \begin{array}{l} 16.7 \text{ to } 37.5 \text{ metres.} \\ 33.3 \text{ to } 86 \quad \text{"} \\ 200 \text{ to } 550 \quad \text{"} \end{array} \right.$
- Rotovision tuning with high ratio (15:1) drive.
- Cabinet of choice black bean and walnut feathered veneers with high gloss, hand rubbed, lustrous finish.

FISK

RADIOLA

All-Wave Model 240

A new 7 valve all-electric Radiola with advanced technical features, rotovision tuning, modern cabinet design, outstanding tone quality, and more convenient operation.

For perfect enjoyment of Australian broadcasting programmes and the thrill of overseas short wave reception when conditions are suitable there is no finer instrument than the Radiola 240.

Embodying the most modern principles of design and construction, this instrument is a notable addition to the famous range of Fisk Radiola broadcast receivers.

Price £44/15/.

Manufactured and Guaranteed by...
AMALGAMATED WIRELESS (A'SIA) LIMITED