



The New Fisk Series

RADIOLA

34E

With Tone Control

ALL-ELECTRIC 3

SPECIFICATION

Radio Engineering Features of Radiola 34E.

CIRCUIT. Improved Screen Grid circuit, employing two "screen grid" tuned stages; screen grid linear power detector and 245 power output stage. A.C. operated, 50-60 cycles, 200-260 volts.

CHASSIS. The chassis, pressed from special grade bright finished steel and heavily electroplated in nickel, is totally shielded.

DYNAMIC SPEAKER. The built-in full power corrugated cone moving coil loud-speaker embodies the latest refinements of design with acoustics of cabinets matched to give faithful reproduction over wide frequency band.

POWER AMPLIFIER. The output stage utilises Radiotron UX 245 power output valve, giving ample volume.

TUNING CONTROL. The illuminated tuning dial is calibrated in metres for quick precise tuning.

VOLUME CONTROL varies the screen grid voltage and provides smooth, distortionless control with maximum clarity at any degree of sound intensity.

VOLTAGE ADJUSTMENT. Rotary voltage regulator switch is fitted, enabling power unit to be adjusted to suit 200v., 220v., 240v., or 260v. supply.

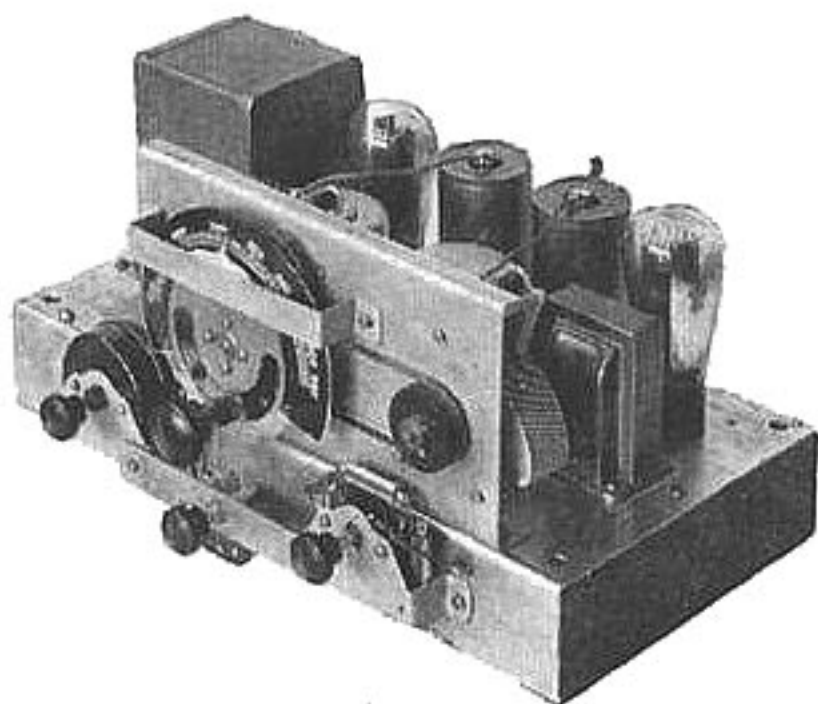
FILTER. Improved filter design ensures complete elimination of A.C. hum.

SPECIAL FITTINGS. Chassis provided with phonograph jacks. A Radio-Phono change-over switch is provided at the back for ease of operation.

THE CABINET is constructed from highest quality laminated wood, and is artistically veneered and gracefully proportioned.

VALVES. Two Radiotron screen grid UY224, one UX245 and one UX280. Screen grid valves are used in the radio frequency stages and in the power detector. The UX245 is used in the output stage and the UX280 in the rectifier.

TESTS AND INSPECTIONS. Thorough fault elimination inspections are made in every stage of manufacture, and comprehensive tests are effected on the finished Radiola for sensitivity, selectivity and fidelity of tone.



3 Valve Chassis of Radiola 34E.

THE "NEW FISK SERIES" **RADIOLA** 34E

Equipped with Radiotron Valves

An all-electric, 3-valve, screen grid console, incorporating an improved screen grid circuit, employing two screen grid tuned stages; screen grid linear power detector and super-output stage.

EQUIPPED WITH

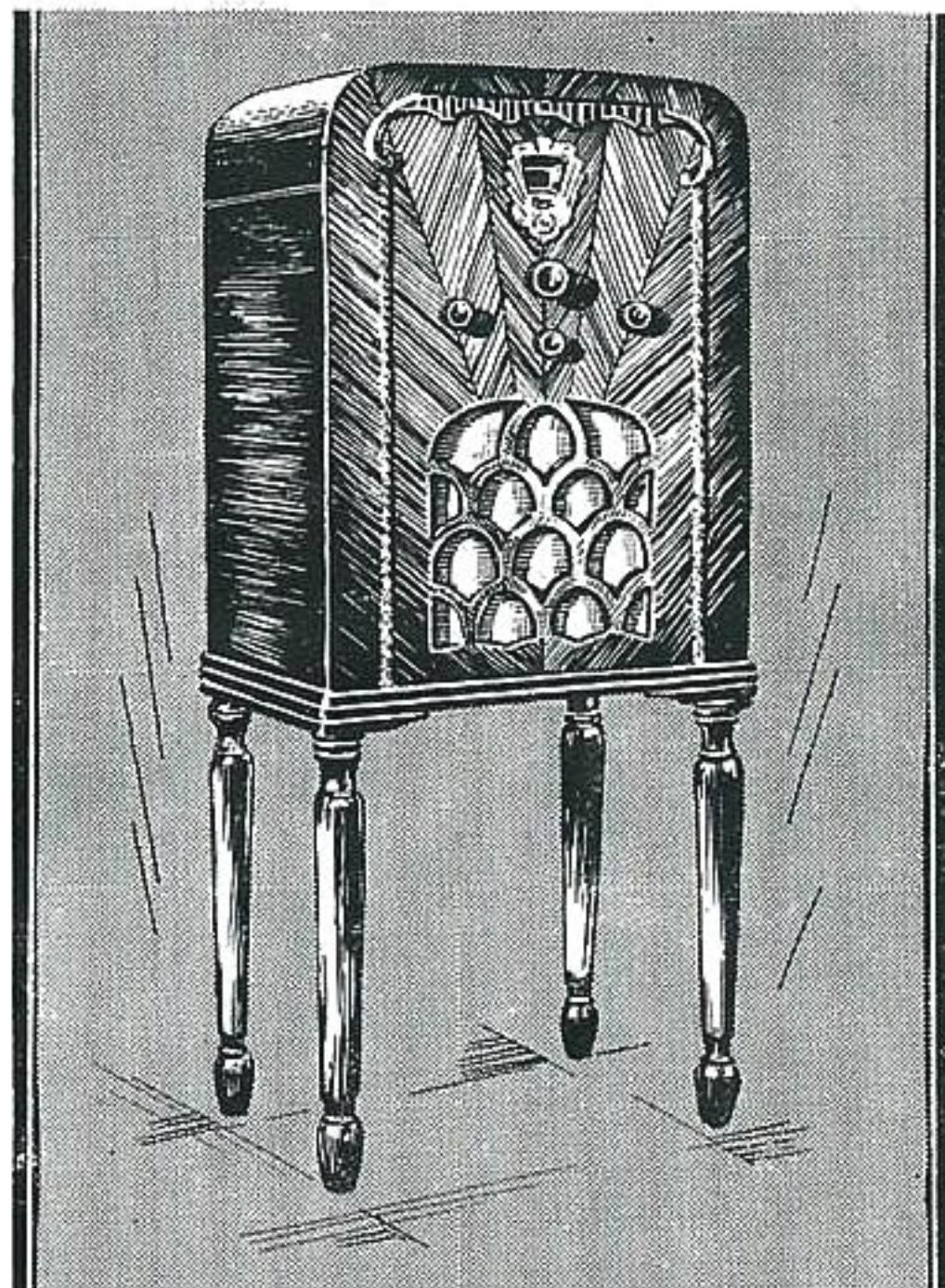
TONE CONTROL

Brilliant in performance,
Sound in engineering,
Brilliant in performance,

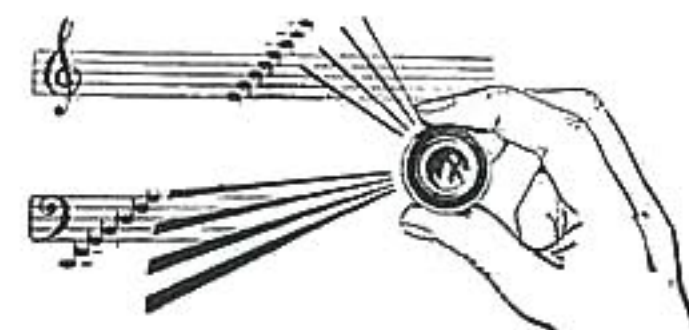
FEATURES

- Full power dynamic speaker.
- Beautifully designed cabinet.
- Tone control—allowing you to personally accentuate the higher or lower notes to your taste.
- Selectivity—no over-lapping of broadcast stations.
- Elimination of hum.

The finest all-electric, screen grid, three-valve receiver yet manufactured in Australia for Australian conditions.



Individuality and charm are expressed in the artistically designed and proportioned console cabinet. The richly patterned panels in delicately carved moulding are of the highest grade workmanship, while the cabinet is of specially selected walnut, finished in deep rich brown. 38 $\frac{3}{4}$ in. high, 17 $\frac{3}{4}$ in. wide, 12in. deep.



from lowest
bass to
highest treble.

Tone control puts the actual choice of tone at your finger-tips. Simply turn the control knob to right or left to emphasise bass or treble at will.

If you enjoy the deep bass of an orchestra, just turn the tone control and the drums roll out of the background—a further turn and the high, sweet notes of the violins stand out clear and true. It makes radio more enjoyable than ever.

£29/10/- *Completely equipped.
Easy terms arranged.*

Your local Radiola Dealer will gladly demonstrate its matchless performance and explain the easy terms on which it may be acquired. You can pay for the Radiola as you enjoy it.

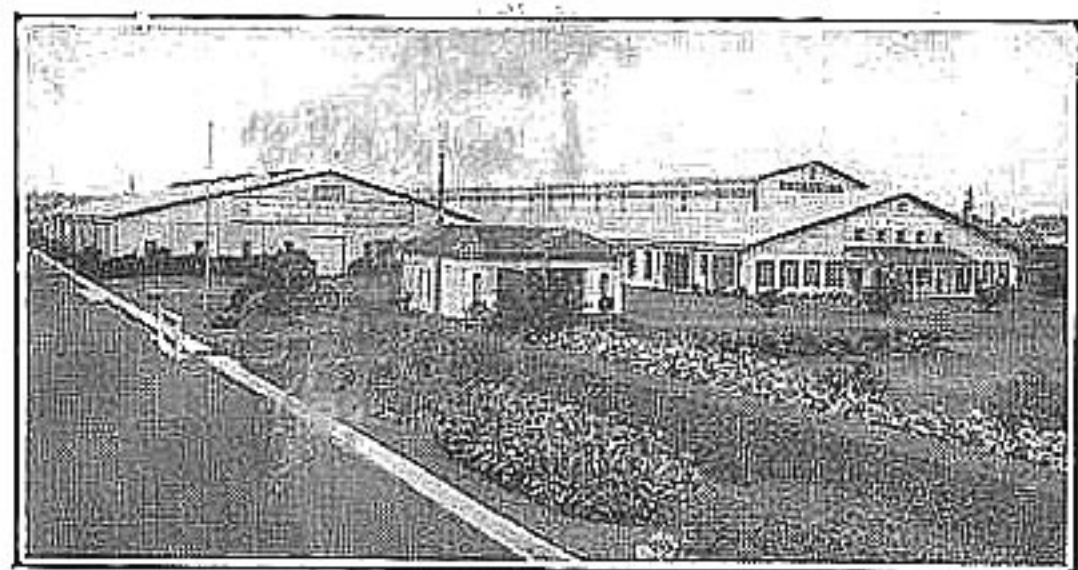
ALL-ELECTRIC 3

BETTER RADIO VALUE
THAN EVER

Buy from
your LOCAL
Radiola
Dealer!

A.W.A. PRODUCTION

The Company's new Radio-Electric Works at Ashfield, near Sydney, comprising 75,000 square feet of floor space standing in magnificently laid out grounds, are equipped with the most modern plant for large scale precision manufacture. The staff comprises the largest aggregation of wireless engineers and trained mechanics in Australia engaged in the production of Radiolas and commercial wireless equipment.



*New Radio-Electric Works of A.W.A. at Ashfield,
near Sydney.*

