

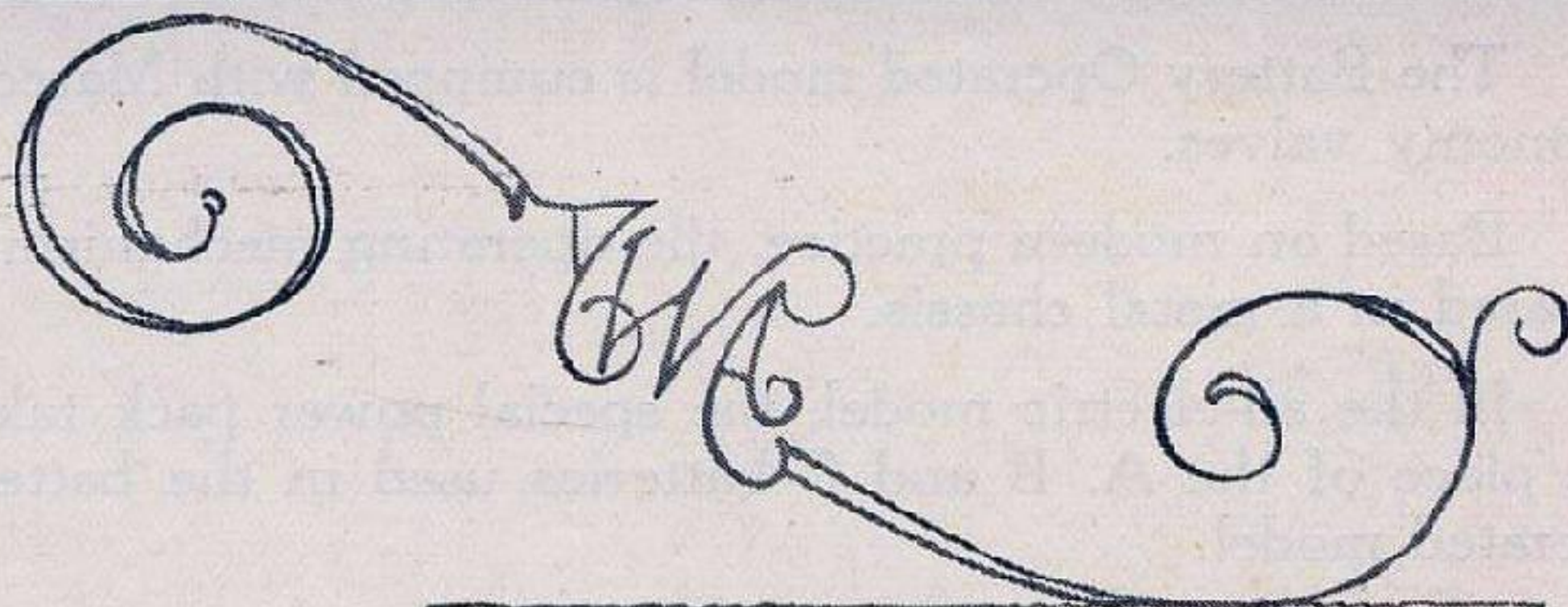
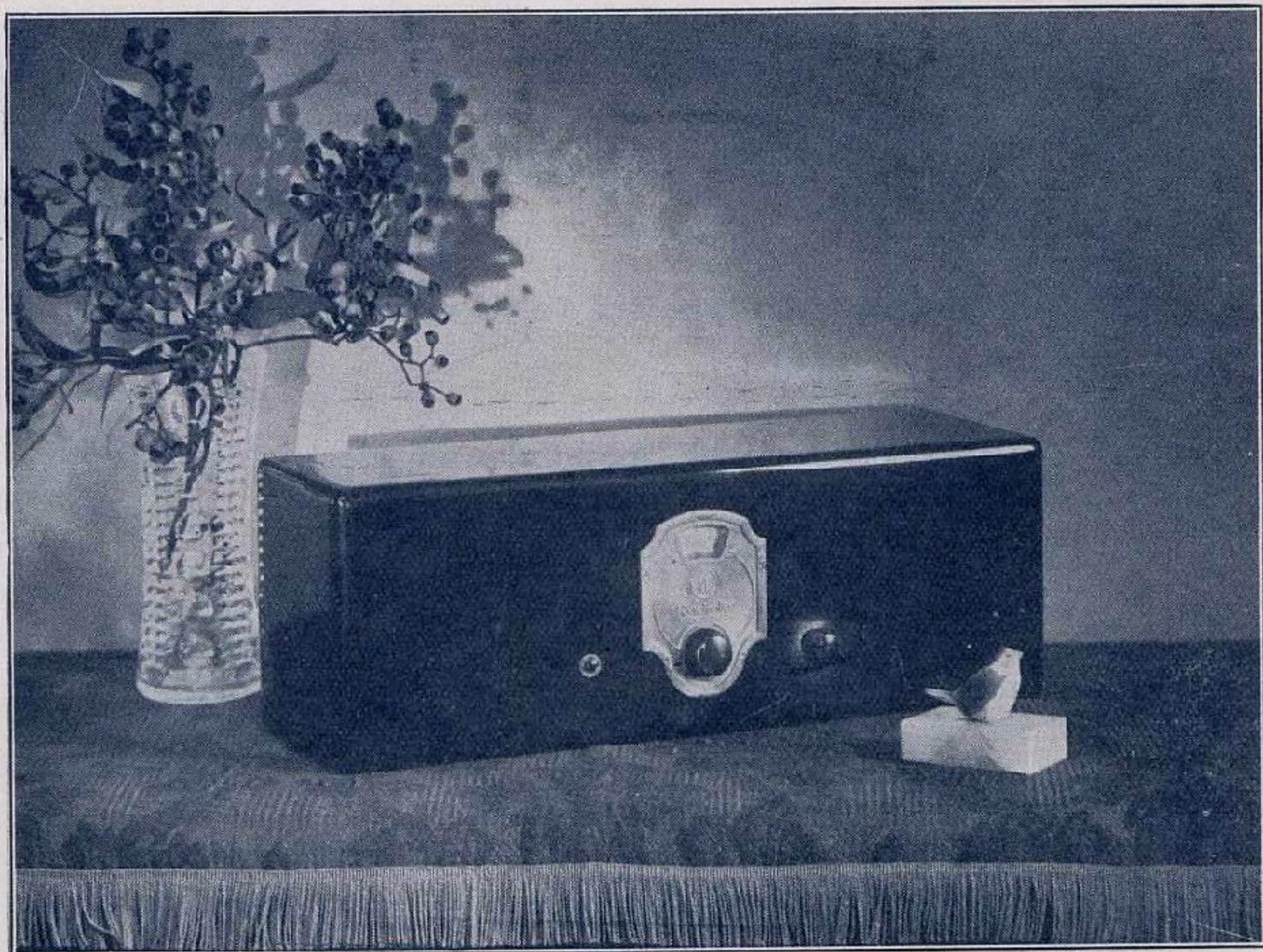
Radiola Electric Three

(Cat. No. R.R. 97).

This Radiola is primarily designed to receive programmes from stations only moderately distant. It is extremely simple to tune and consumes only a fraction of power from the electric light socket. Very compact, it possesses all the essential features of the larger Radiolas, and will give excellent loudspeaker results from local stations.

Where long-distance programmes are desired, the larger Radiolas are recommended.





“Radiola” Electric 3.

An All-Electric three-valve Radiola
for local reception.

