

The Duoforte 90E





The cabinet of the Duoforte 90E sets a new standard of beauty, originality of design and fineness of finish. Its graceful lines are emphasized by the rich grain of the specially selected Walnut veneer. It has side panels of Queensland Walnut, while the French doors of choice Burr Walnut are swung by invisible hinges.

Height, 44½ins. Width, 28½ins. Depth, 16½ins.

THE SUPREME INSTRUMENT OF MUSICAL REPRODUCTION

IN THE DUOFORTE 90E AMALGAMATED WIRELESS
INTRODUCE A SUPERLATIVE RADIO-PHONE COM-
BINATION INCORPORATING THE FAMOUS AWA
CHASSIS AND A HIGH-GRADE ELECTRIC PHONO-
GRAPH OF THE LATEST TYPE.

FEATURES:

Seven-valve chassis of which four valves are of the
screen grid type.

Tone control in both the radio and the phono
combination.

Exceptional interstate reception.

Full power moving coil loudspeaker.

The amplifying equipment gives exceptional volume
with fidelity of tone.

Beautifully designed cabinet.

Amazing amplification of distant radio signals.

No overlapping of broadcast stations.

Elimination of hum.



PRICE : £99

COMPLETELY EQUIPPED
Easy Terms Available

AMALGAMATED WIRELESS (A/sia.) LTD.

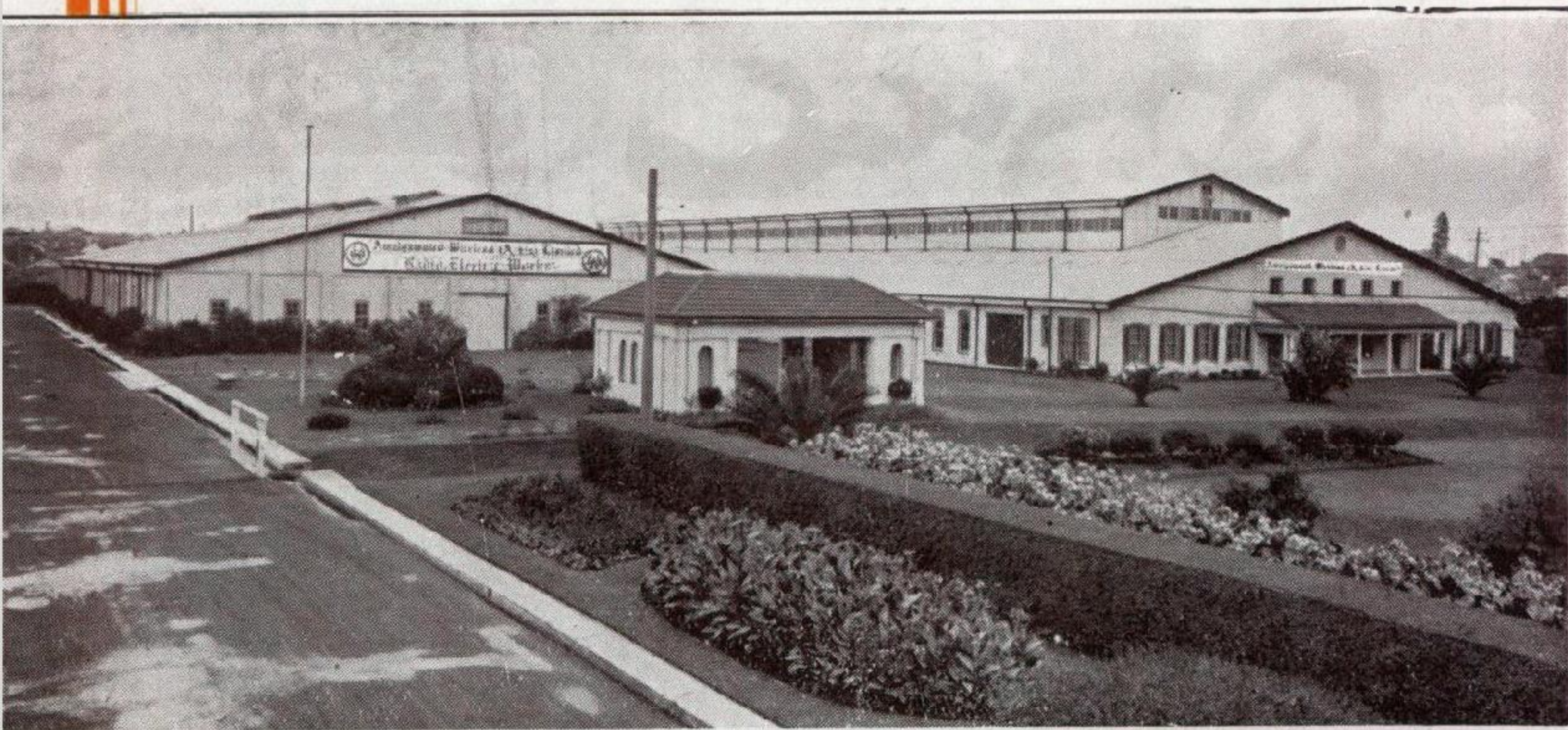


*Buy from
your LOCAL
Radiola
Dealer!*

The DUOFORTE 90_E

A.W.A. PRODUCTION

The Company's new Radio-Electric Works at Ashfield, near Sydney, comprising 75,000 square feet of floor space, standing in magnificently laid out grounds, are equipped with the most modern plant for large scale precision manufacture. The staff comprises the largest aggregation of wireless engineers and trained mechanics in Australia, engaged in the production of Radiolas and commercial wireless equipment.



AN AUSTRALIAN WORKS
IN AN AUSTRALIAN GARDEN

● *New Radio-Electric
Works of AWA, at
Ashfield, near Sydney.*