



AWA
GIGANTAFORTE

Improvement in the design of sound amplifiers has been one of the outstanding developments in wireless engineering during the past few years. With the perfection of amplifiers working direct from the electric mains and the introduction of dynamic speakers, wireless engineers are now able to design amplifying apparatus, reproducing music and speech with all its original fidelity at almost unlimited volume. In the design, manufacture and application of such apparatus, Amalgamated Wireless (A/asia) Ltd. has taken a prominent part and now introduces the "Gigantaforte." The "Gigantaforte" incorporates the results of modern research in sound amplifying apparatus, and many years' experience in the manufacture of A.C. apparatus has made it possible to design the whole equipment so that it will operate perfectly from an electric power point. Acoustic requirements have also been carefully considered in the amplifier to ensure that the equipment will handle the largest output of energy without distortion.

*The
A.W.A.
Gigantaforte*



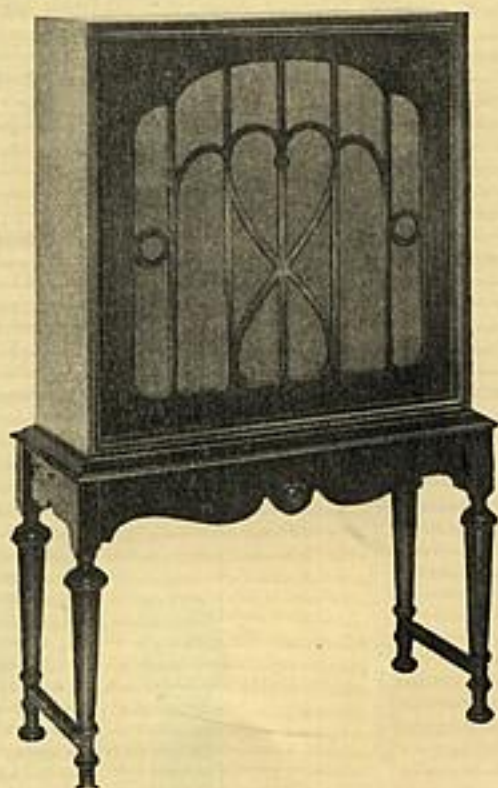


TOP:

Open view of the "Gigantaforte" showing the two turntables and the fader volume control. Records are stored in drawers arranged down either side of the cabinet.

BOTTOM RIGHT:

Front view of the new improved dynamic type of loud-speaker which is mounted in an attractive walnut console cabinet of graceful proportions and finished in shaded duco.



*General
Description*

Cabinet.—The "Gigantaforte" is assembled in a handsome rolled top desk of polished walnut, with record compartments ranged down either side. The two turntables, together with the fader volume control and needle receptacles, are assembled on the top of the desk.

Equipment.—Valves of the most modern type, providing long service as well as efficient operation, are standard equipment. The transformers, condensers and other components have been designed to give trouble-free service, possessing throughout a wide safety margin ensuring against breakdown.

Operation.—Designed for all-electric operation the "Gigantaforte" equipment works direct from the electric light mains without the use of any batteries. The turntables are revolved by small electric induction motors which will operate for many years without the slightest attention.

Speakers.—The loudspeakers are of the improved dynamic type, mounted in artistic cabinets of walnut veneer, with shaded duco finish. They are designed in strict accordance with acoustic principles and reproduce the entire musical scale with perfect clarity and distinctness.



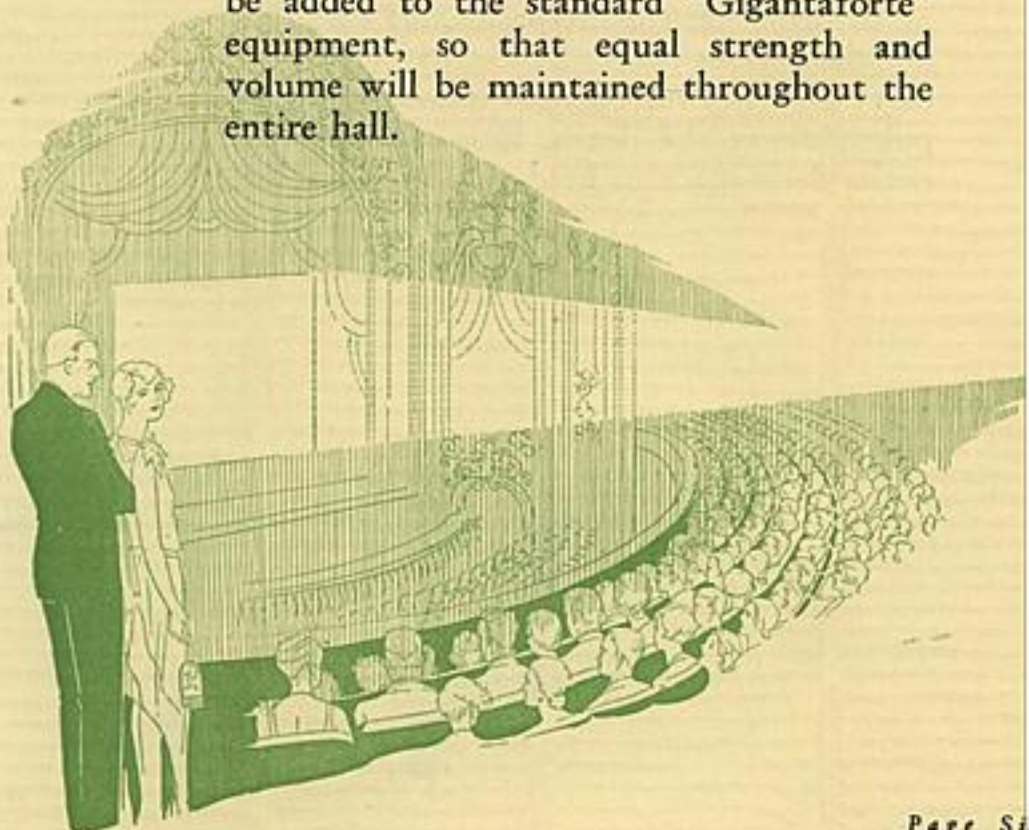
*On
Beach
Resorts*

During the warm summer months many thousands of people congregate on Australia's favourite beach resorts, and the authorities who are interested in the welfare of these visitors should seriously consider the wide and attractive possibilities of this form of entertainment. Orchestral music and instrumental items which are now being recorded by the world's most famous performers, reproduce splendidly on the "Gigantaforte," and with a suitable arrangement of loud-speakers, according to circumstances, any number of people can be entertained. By the addition of a microphone unit to the standard equipment, announcements can be made to the assembled spectators, on the promenade, during the progress of surf carnivals and band recitals. The loud-speakers, which are of the dynamic type, give reproduction of speech with a perfectly natural effect. The installation will materially assist in enhancing the popularity of any beach holiday resort, whilst its robust design ensures trouble-free service.



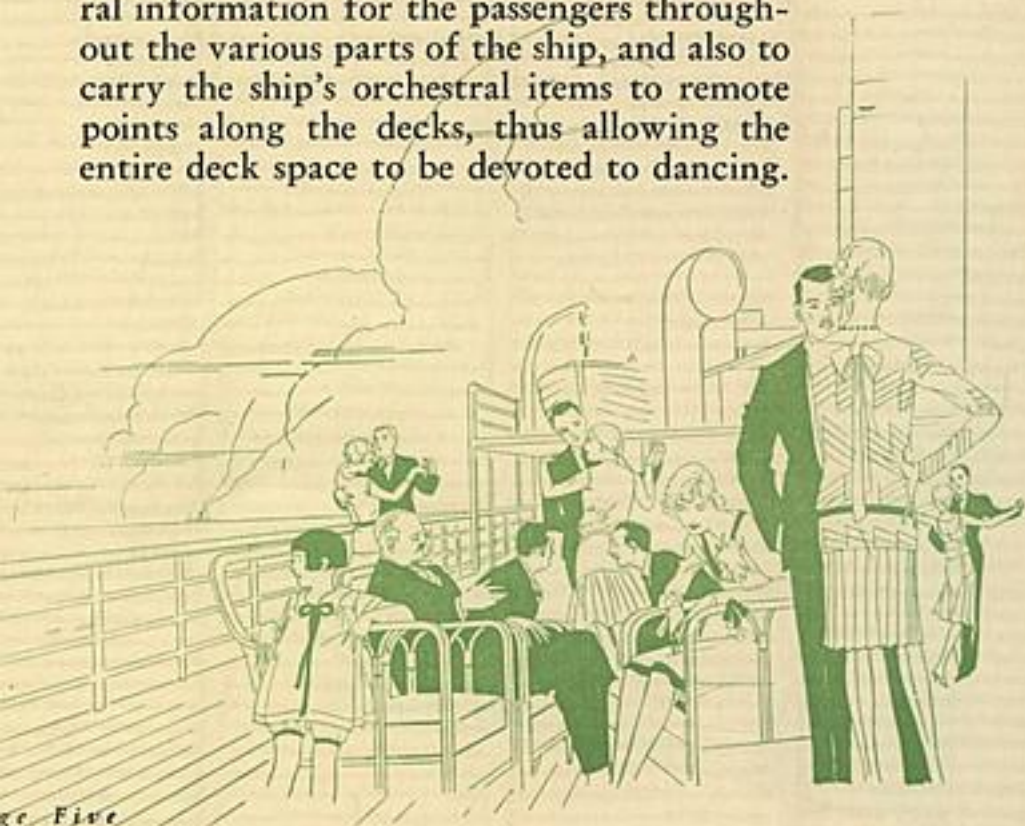
*In
Picture
Theatres*

In many country and suburban picture theatres the performance would be made far more attractive by the installation of the "Gigantaforte." The "Gigantaforte" can be fitted in picture shows where there is a suitable electric light supply available, and it will be seen from the description on page three that the "Gigantaforte" is fitted with two turntables and a fading device. With a proper selection of gramophone records, music can be adapted to suit each picture, this being done, simply and effectively, by the use of the fader volume control. The volume of the selections may also be varied to suit special conditions without in any way affecting the tonal qualities of the music. For the larger theatres, extra speakers may be added to the standard "Gigantaforte" equipment, so that equal strength and volume will be maintained throughout the entire hall.



*Aboard
an
Ocean
Liner*

The installation of the A.W.A. "Gigantaforte" on passenger ships is undoubtedly one of the most successful of its many applications. By means of this reproducing equipment, gramophone record music may be carried to the dining saloon, the lounge or the main promenade deck—providing dinner music, dance numbers and concert selections. The inclusion of a specially designed converter allows the instrument to be operated direct from the ship's electric supply, and it is possible to use as many as six loud-speakers simultaneously without any loss of tonal quality. Provision is also made for the addition of microphone units, if required, to the standard equipment for the purpose of broadcasting special instructions and general information for the passengers throughout the various parts of the ship, and also to carry the ship's orchestral items to remote points along the decks, thus allowing the entire deck space to be devoted to dancing.





AMALGAMATED WIRELESS
(A'SIA) LTD.

Incorporated in New South Wales