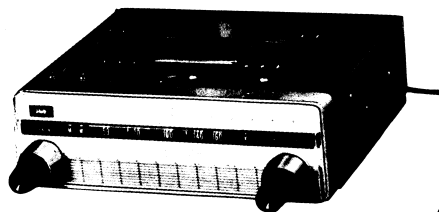


SHARP MODEL ATR-910

SPECIFICATIONS

Circuit :	7-transistor, 1-band superheterodyne system with AGC.
Frequency Range :	530-1605KC
Intermediate Frequency :	455KC
Power Output :	1.5/0.6W at 13.2/6.5V
Power Supply :	6/12V DC car battery positive and negative grounding
Power Consumption :	4W/2W at 13.2/6.5V
Speaker :	4" permanent dynamic speaker
Dimensions :	6¼" (W) × 2" (H) × 6¼" (D)
Weight :	2.6 lbs (1.2kg)



ALIGNMENT INSTRUCTION

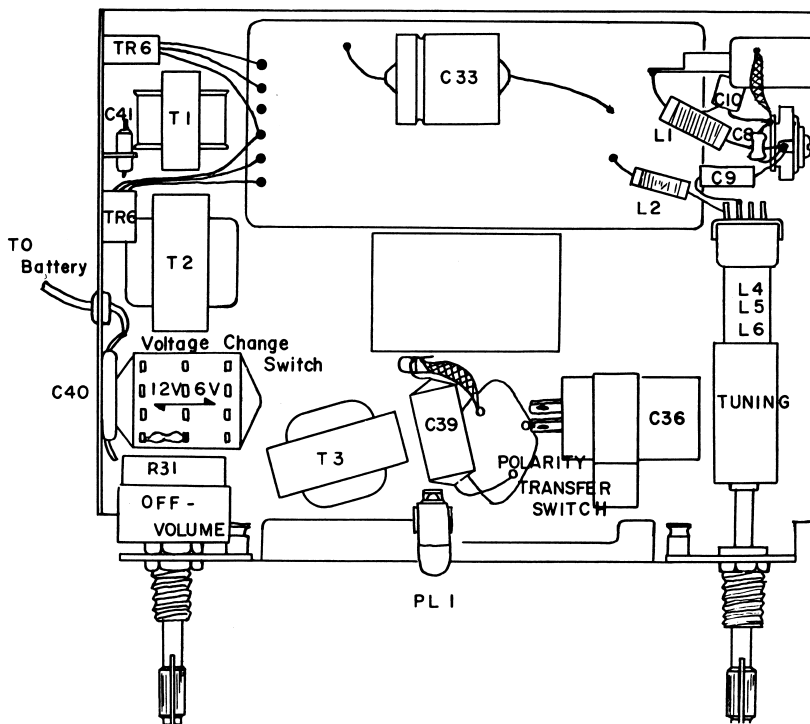
Should it become necessary at any time to check the alignment of this receiver, proceed as follows ;

- 1) Connect an output meter across the speaker voice coil lugs.
- 2) Set volume control to maximum.
- 3) Use the lowest setting of signal generator capable of producing adequate indication on the lowest scale of output meter.
- 4) Use a non-metallic alignment tool.
- 5) Repeat adjustments to insure good results.

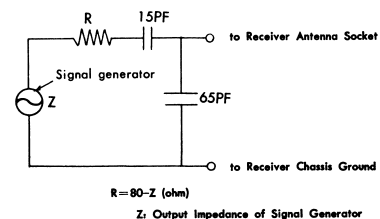
ALIGNMENT CHART

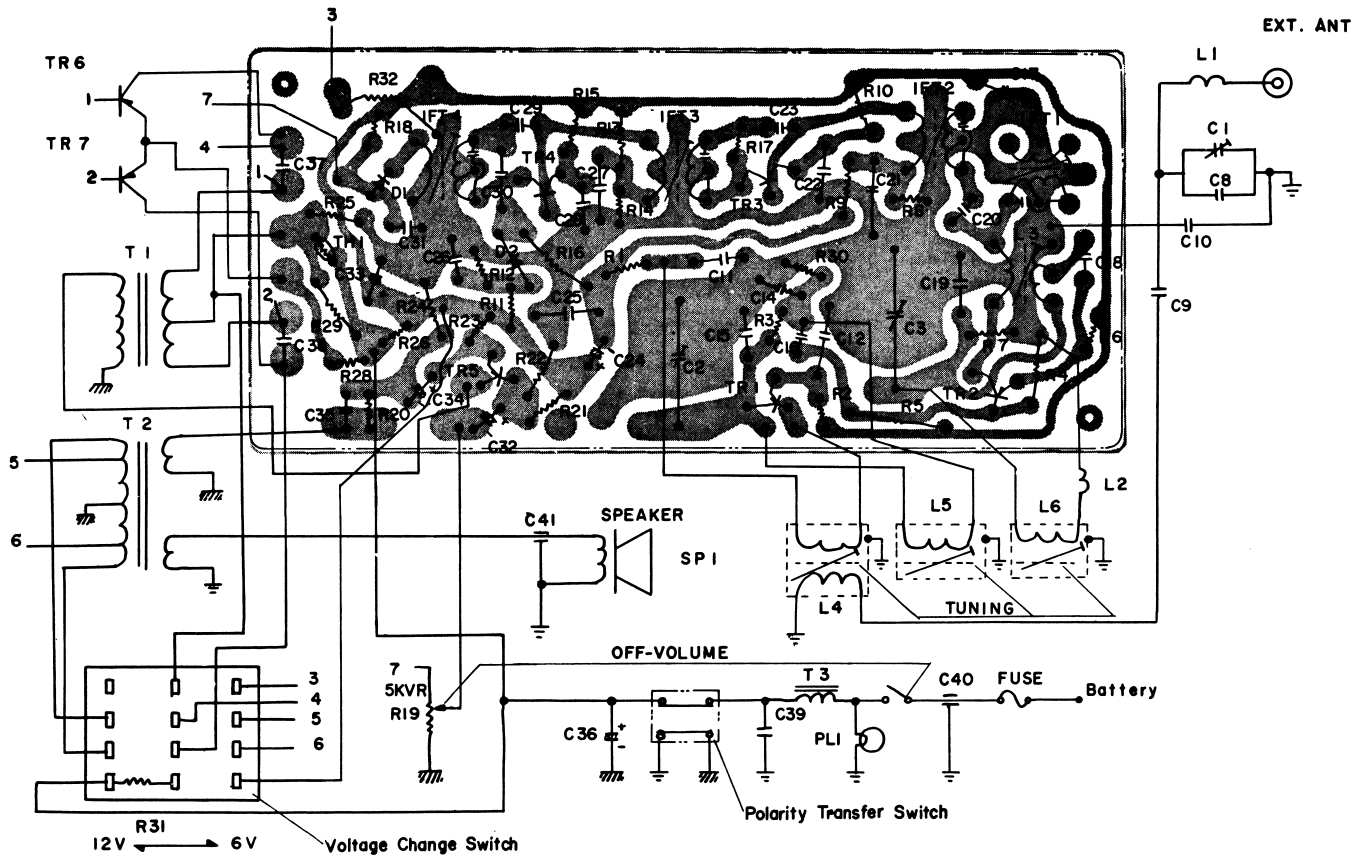
Step	Signal generator		Receiver		Adjust	
	Band	Connection to receiver	Input signal frequency	Dial setting		Remarks
1	M.W.	Connect signal generator through the appointed dummy to the external antenna.	Exactly 455KC. (400%, 30%, AM modulated.)	The highest frequency range	Adjust for maximum output on speaker voice coil lugs.	4th-IF Trans. core 3rd-IF Trans. core 2nd-IF Trans. core 1st-IF Trans. core
2	M.W.	Same as step 1.	Exactly 520KC. (400%, 30%, AM modulated.)	The lowest frequency range	Same as step 1.	MW Oscillator core (red)
3	M.W.	Same as step 1.	Exactly 1650KC. (400%, 30%, AM modulated.)	Same as step 1.	Same as step 1.	MW Oscillator trimmer (C ₃)
4	M.W.	Same as step 1.	Exactly 1400KC. (400%, 30%, AM modulated.)	1400KC	Same as step 1.	MW Antenna trimmer (C ₁) RF trimmer (C ₂)
5	M.W.	Repeat steps 2, 3 and 4 until no further improvement is obtained.				

LOCATION OF PARTS



APPOINTED DUMMY ANTENNA

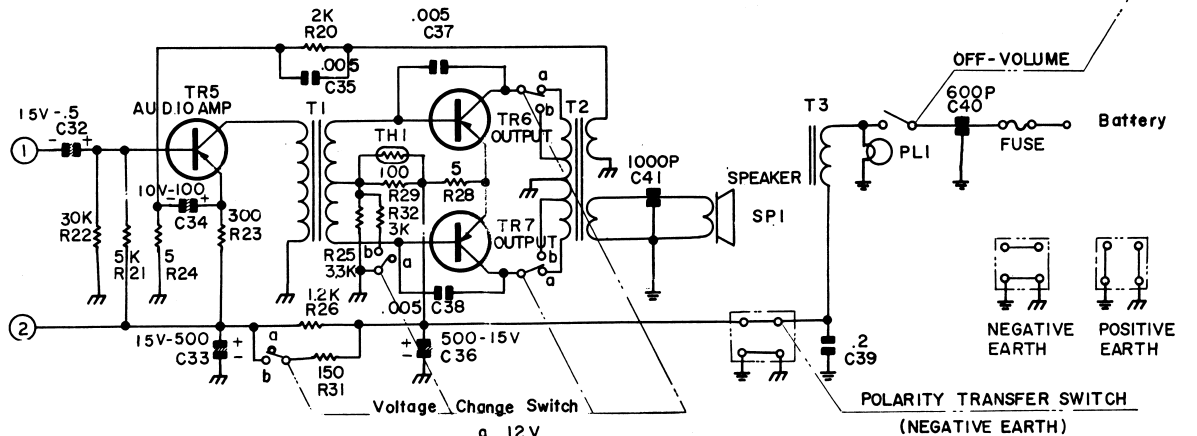
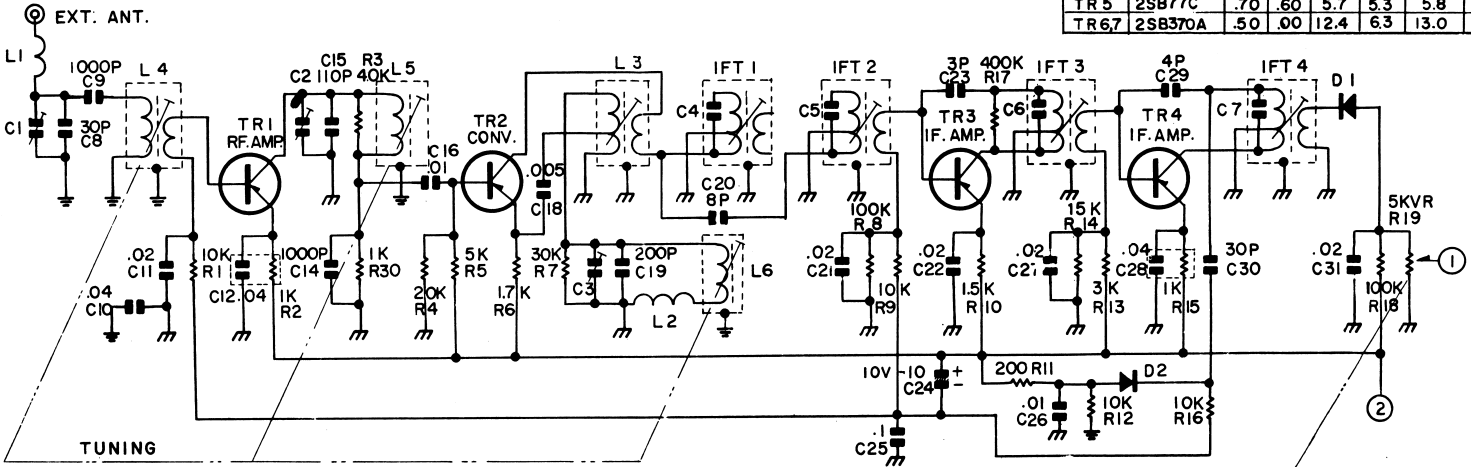




SHARP ATR-910

TRANSISTOR VOLTAGE (VOLTS)

TR NO	TRANSISTOR	Coll.		Base		Emitt	
		12v	6v	12v	6v	12v	6v
TR 1	29A 355	.22	.17	6.5	5.5	6.6	6.0
TR 2	2SA15	.00	.00	5.4	4.5	5.5	4.5
TR 3	2SA12A	.00	.00	6.0	5.4	6.2	5.5
TR 4	2SA12C	.00	.00	5.6	5.0	5.7	5.2
TR 5	2SB77C	.70	.60	5.7	5.3	5.8	5.5
TR 6,7	2SB370A	.50	.00	12.4	6.3	13.0	6.3



TUNING RANGE
530-1605 KC
IF
455 KC

CAPACITANCE VALUES
P PF
NO UNIT MARKS UF
RESISTANCE VALUES
OHMS

a 12V
b 6V

