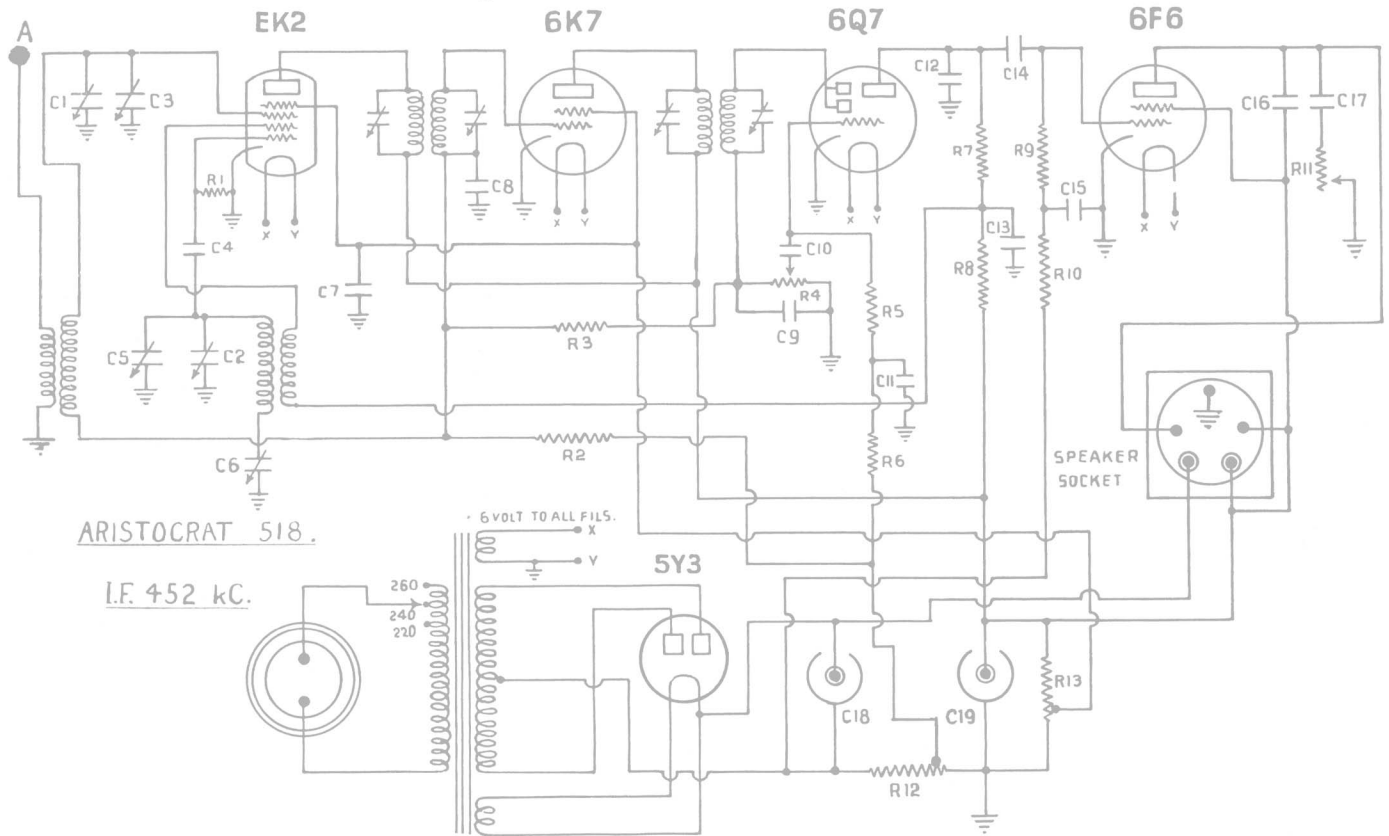
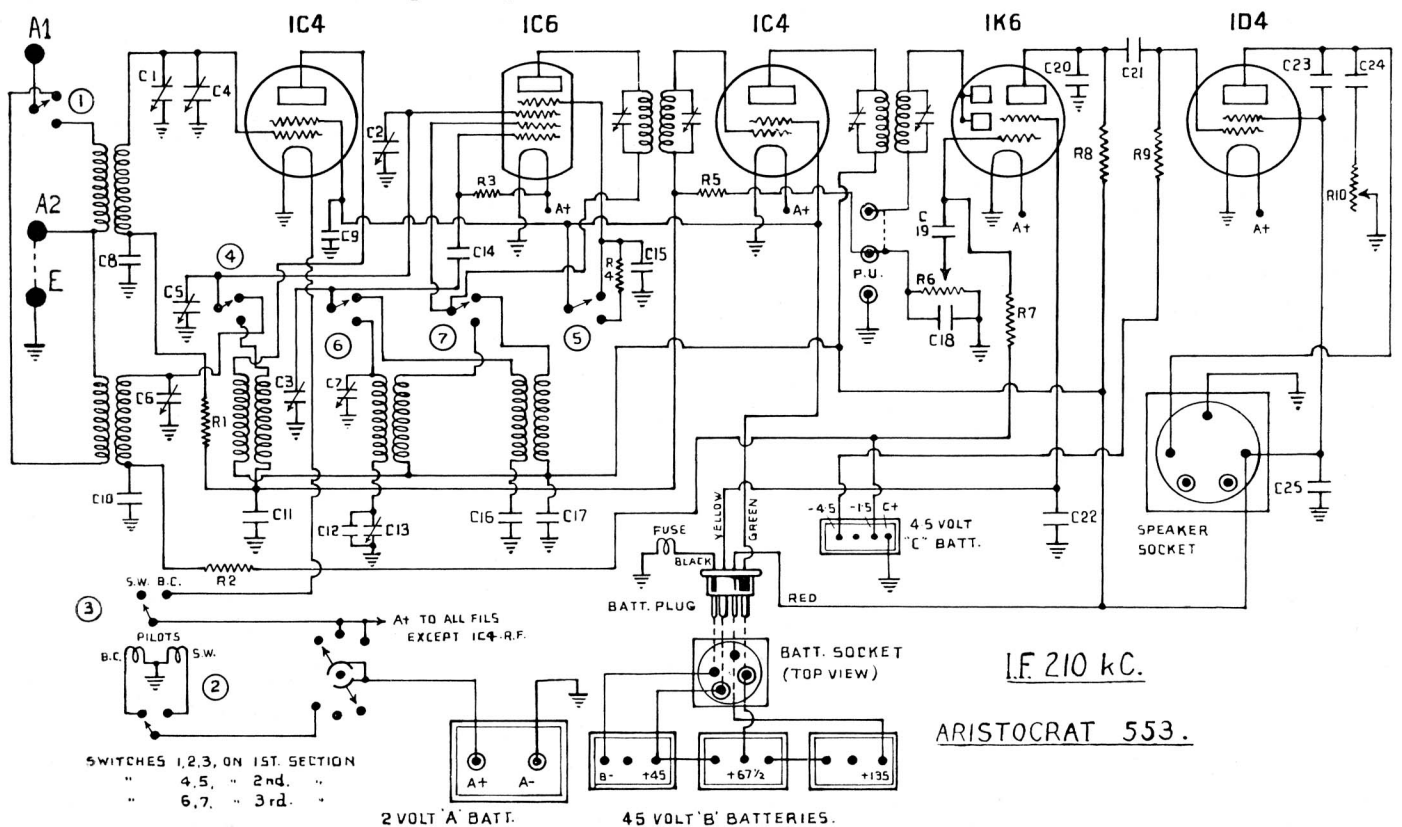


# "Aristocrat" A.C. Operated Broadcast Console Model 518



# "Aristocrat" Battery Operated Dual-Wave Console Model 553



Circuit data on the two models shown above will be found on the facing page.

# "Aristocrat" A.C. Operated Dual-Wave Console Model 801

1937 Console, uses 12-inch 1,500 ohms field, loudspeaker.

### COMPONENT VALUES.

#### RESISTORS.

R1—100,000 ohms; R2, R8, R15—500,000 ohms,  $\frac{1}{2}$  W.; R3—50,000 ohms,  $\frac{1}{2}$  W.; R4, R5, R7, R10—1 megohm,  $\frac{1}{2}$  W.; R6—500,000 ohms, volume control; R9—240 ohms, tapped at 40; R11—75,000 ohms; R12—10,000 ohms, 1 W.; R13—100,000 ohms, 1 W.; R14, R18—50,000 ohms, 1 W.; R16—950 ohms, w.w.; R17—20,000 ohms, variable.

#### CONDENSERS.

C1, C2—sections of 2-gang variable; C3, C5, C6—2-plate coil trimmers; C4, C11, C18—0.01 mfd., mica; C7, C14—100 mmfd., mica; C8—B.C. padder; C9, C10, C15, C22, C29—0.1 mfd., 400 v.; C12—0.008 mfd., mica, S.W. padder; C13—0.05 mfd., 600 v.; C16—0.001 mfd., mica; C17, C19—0.5 mfd., 400 v.; C20—25 mfd., 25 v., electro; C21—0.1 mfd., 600 v.; C23, C24—0.006 mfd., mica; C25—16 mfd., 500 v., electro; C26, C27, C28—8 mfd., 500 v., electro.

(Further data on model "801" will be found on page 207.)

## "Aristocrat" Model 518

1937 Console, uses 8-inch, 2,500 ohms field, loudspeaker. Circuit appears on facing page.

### COMPONENT VALUES.

#### RESISTORS.

R1—50,000 ohms,  $\frac{1}{2}$  W.; R2, R3—1 megohm,  $\frac{1}{2}$  W.; R4—500,000 ohms, volume control; R5, R6, R9, R10—500,000 ohms,  $\frac{1}{2}$  W.; R7—250,000 ohms, 1 W.; R8—10,000 ohms, 1 W.; R11—20,000 ohms, variable; R12—320 ohms, tapped at 30; R13—15,000 ohms, voltage divider.

#### CONDENSERS.

C1, C2—sections of 2-gang variable; C3, C5—2-plate coil trimmers; C4—100 or 250 mmfd., mica; C6—padder; C7, C8, C11, C15—0.1 mfd., 400 v.; C9—250 mmfd., mica; C10—0.01 mfd., 600 v.; C12—500 mmfd., mica; C13, C17—0.1 mfd., 600 v.; C14—0.01 mfd., mica; C16—0.006 mfd., mica; C18, C19—8 mfd., 500 v., electro.

## "Aristocrat" Model 553

1937 Console, uses 10-inch permag. loudspeaker. Circuit appears on facing page.

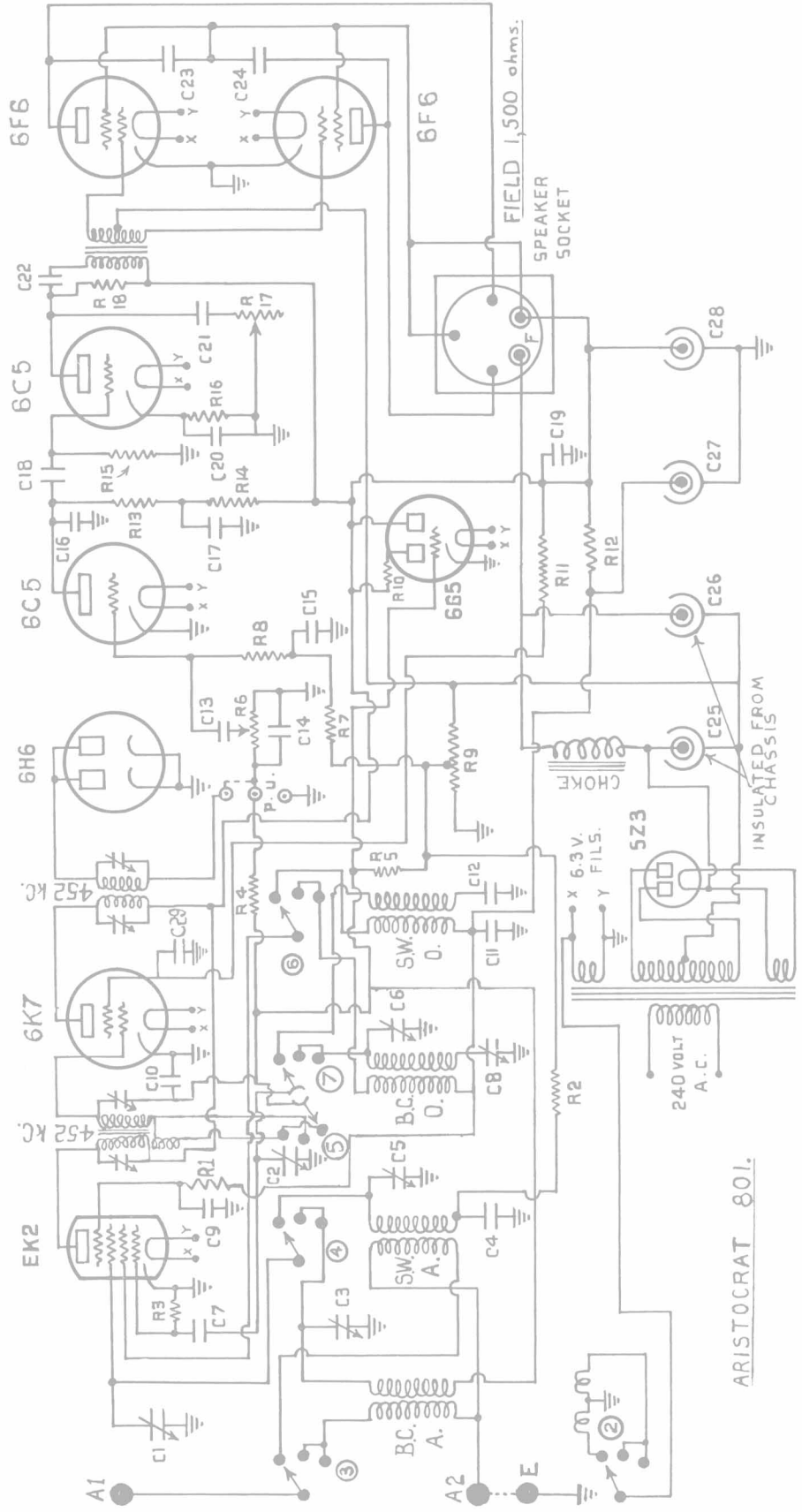
### COMPONENT VALUES.

#### RESISTORS.

R1, R2—100,000 ohms,  $\frac{1}{2}$  W.; R3—50,000 ohms,  $\frac{1}{2}$  W.; R4—25,000 ohms, 1 W.; R5—1 megohm,  $\frac{1}{2}$  W.; R6—500,000 ohms, volume control; R7, R9—500,000 ohms,  $\frac{1}{2}$  W.; R8—250,000 ohms, 1 W.; R10—500,000 ohms, variable.

#### CONDENSERS.

C1, C3, C5—sections of 3-gang variable; C2, C4, C6, C7—2-plate trimmers; C8, C10, C15—0.05 mfd., 400 v.; C9, C17, C22, C25—0.1 mfd., 400 v.; C11—0.5 mfd., 400 v.; C12—500 mmfd., mica, B.C. padder shunt; C13—7-plate B.C. padder; C14, C18—100 mmfd., mica; C16—0.01 mfd., S.W. padder; C19, C21—0.01 mfd., mica; C20—100 or 250 mmfd., mica; C23—0.002 mfd., mica; C24—0.02 mfd.



ARISTOCRAT 801.