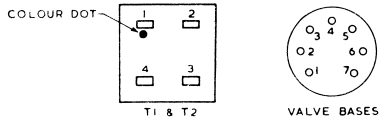
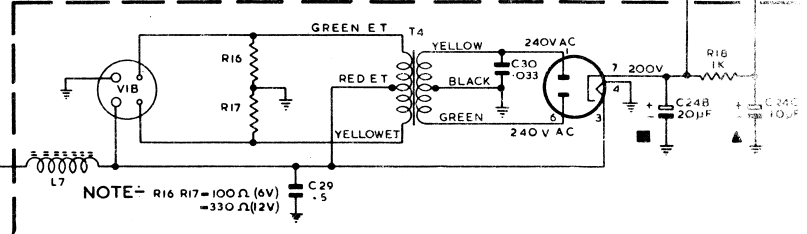
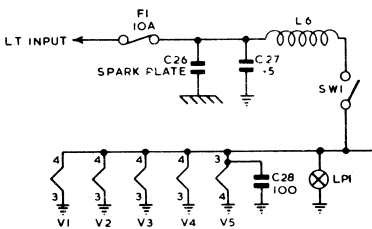


**BASE CONNECTIONS.**



- NOTE:**
- ① ARROW INDICATES DIRECTION OF CLOCKWISE ROTATION
  - ② VOLTAGES MEASURED ON A 20000 OHM/VOLT METER, WITH VOLUME & TONE CONTROLS MAX. CLOCKWISE AND NO SIGNAL INPUT.
  - ③ VOLTAGE VARIES WITH METER SENSITIVITY



- NOTE:** R16 R17=100Ω (6V)  
=330Ω (12V)

**A. W. A. CAR RADIO MODELS 968A & 969A**