

# T23. TOSHIBA MODEL 7P-70A

## ALIGNMENT PROCEDURE

The following equipment is required for alignment :

1. Signal generator with a frequency range of at least from 455 KC to 1650 KC, AM.
2. Vacuum tube volt meter.
3. Test loop, a coil of any size wire, one turn or more.
4. For alignment points, see schematic.

### NOTES :

During alignment keep the signal generator outputs at the lowest level that will maintain a useable output from the set.

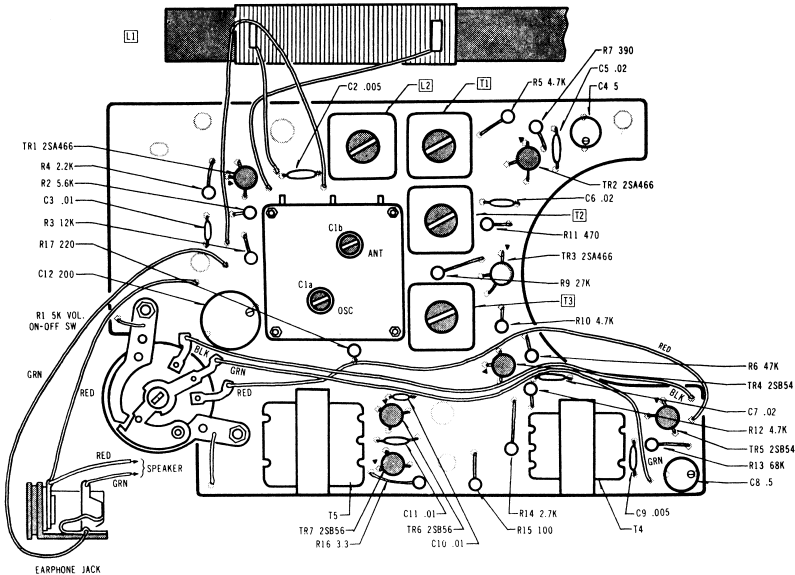
Ground connection of signal generator.....chassis ground

Generator modulation (AM) .....30%, 400%

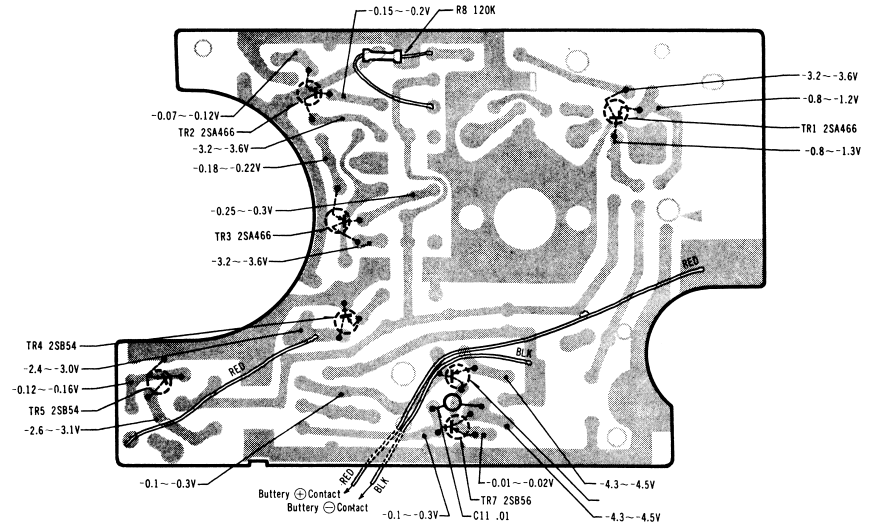
Step	Generator Connection	Generator Frequency	Position of Tuning gang	Meter or Oscilloscope Connection	Adjustment	Remarks
------	----------------------	---------------------	-------------------------	----------------------------------	------------	---------

### ALIGNMENT

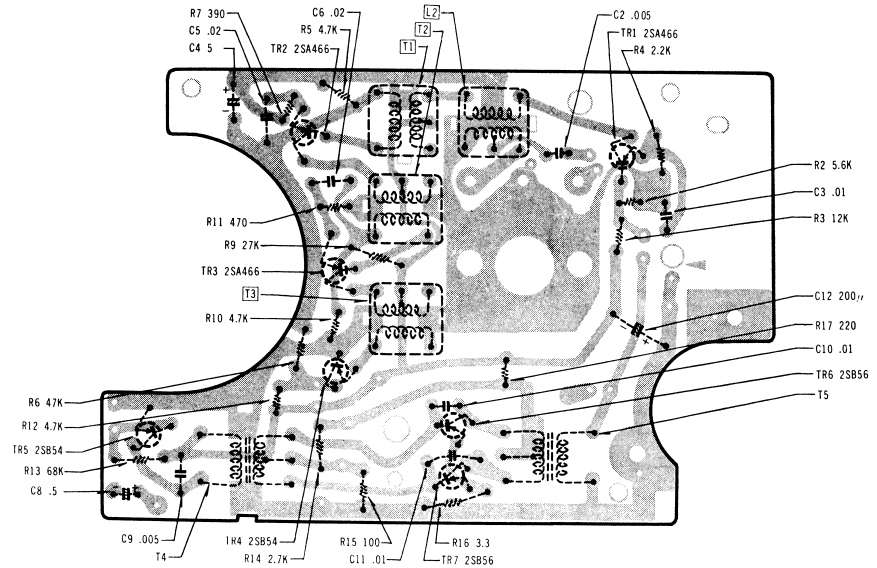
1.	Test Loop	455 KC	Tuning Gang fully closed	Across Voice Coil	T 1, 2, 3	Adjust for maximum
2.	Same	525 KC	Same	Same	L 2 (Osc. Coil)	Same
3.	Same	1650 KC	Tuning Gang fully open	Same	C 1 a (Osc. Trimmer)	Same
4.	Repeat Step 2 and 3					
5.	Same	600 KC	600 KC	Same	L 1 (Ant. Coil)	Same
6.	Same	1400 KC	1400 KC	Same	C 1 b (Ant. Trimmer)	Same
7.	Repeat Step 5 and 6					



TOP VIEW



BOTTOM VIEW



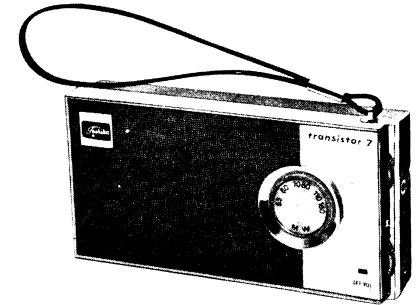
TOP VIEW BOTTOM VIEW



# TOSHIBA TRANSISTOR RADIO SERVICE DATA

## SPECIFICATIONS

FREQUENCY RANGE:	AM 530~1600 KC
INTERMEDIATE FREQUENCY:	455 KC
POWER SOURCE:	UM-3 ("AA") × 3---4.5V
POWER OUTPUT:	250 mW (max.)
SPEAKER:	2 3/4" P.M.D. Type
ANTENNA:	Ferrite Core Antenna
JACK:	Earphone Jack
TRANSISTORS:	
TR1, TR2, TR3	2SA466 Converter and IF Amplifier
TR4, TR5	2SB54 DET. A.G.C. and AF Amplifier
TR6, TR7	2SB56 Power Amplifier
DIMENSIONS:	W---5 1/2" H---2 3/4" D---1 1/4"
WEIGHT:	0.7 Lbs (With Batteries)
ACCESSORIES:	Carrying Case, Earphone Bag Earphone.

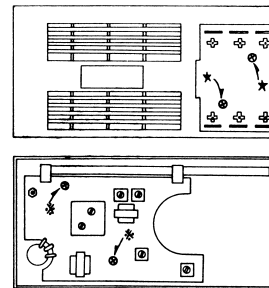


## CHASSIS REMOVAL

1. Remove the battery lid of the back cabinet.
2. Remove two screws marked (★) shown in the diagram.
3. Remove the back cabinet.
4. Remove two screws marked (✳) shown in the diagram. Carefully pull the chassis from the cabinet.

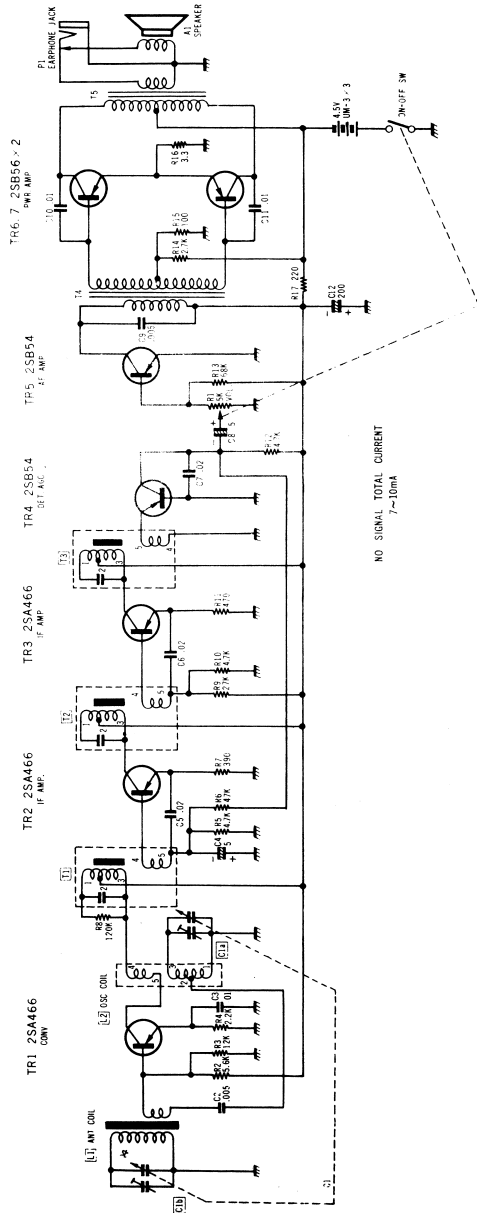
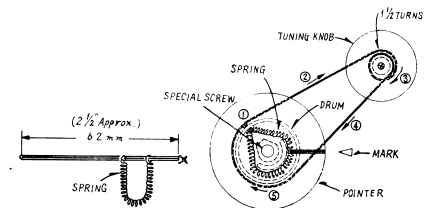
### Remarks:

When separating the chassis, do not loosen any screw except the ones pointed with white enamel.



## DIAL CORD STRINGING

1. Set the variable capacitor to the minimum capacitance. (Open)
2. Set the dial cord as number in the diagram.



**SCHEMATIC DIAGRAM**