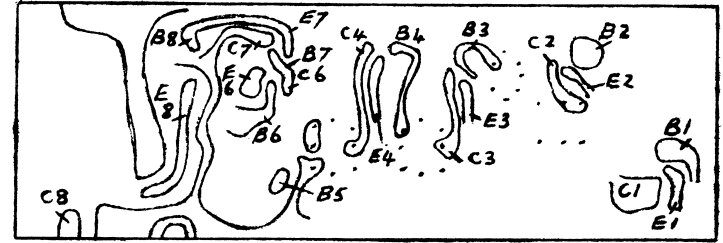
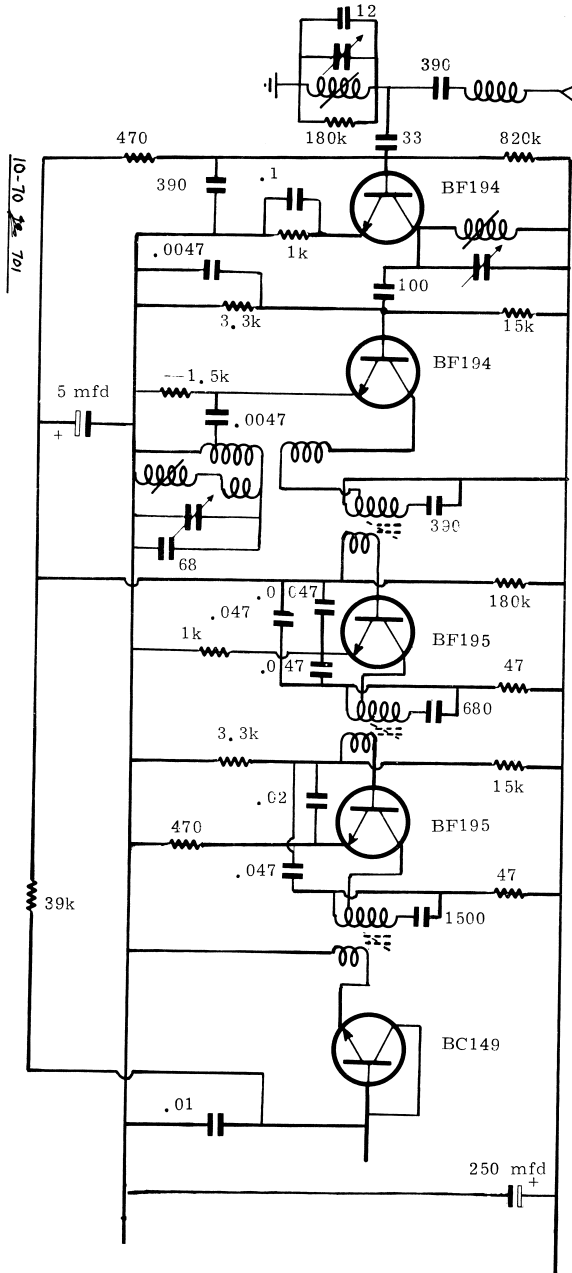


AUTOVOX RF SECTION for MODELS 701, 701-P, 702, 702-P, 705 & 708  
 12 Volt Only.



TRANSISTOR TEST POINTS FOR MODELS

701 & 701-P

All Readings read from Negative line at full volume off station  
 APPROX. Readings at 14 Volts. (With aerial not connected.)

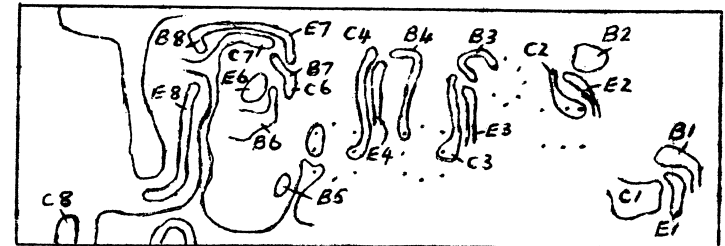
0C963 Replacing

BC178 or

AD162	BC158	BC148	BC148	BF195	BF195	BF194	BF194
C8 1.2	C7 0	C6 12.3	C5 0	C4 11.4	C3 11.4	C2 11.5	C1 11.5
B8 13.2	B7 12.3	B6 5.7	B5 .2	B4 2	B3 1.8	B2 2	B1 1.8
E8 13.4	E7 13.2	E6 5.5	E5 .2	E4 1.3	E3 1.3	E2 1.5	E1 1.3

COLLECTOR CURRENT AD162 250 MA at 14 Volts.

\* When checking the collector current of the output transistor, the MA meter must be connected in series with the collector before the set is switched on. After setting the current, switch off the set before disconnecting the meter, otherwise the driver transistor BC158, BC178 or 0C968 (depending on the one used) could be damaged.



TRANSISTOR TEST POINTS FOR MODELS

702 & 702-P

All Readings read from Negative line at full volume off station  
 APPROX. Readings at 14 Volts. (With aerial not connected.)

0C968 Replacing

BC178 or

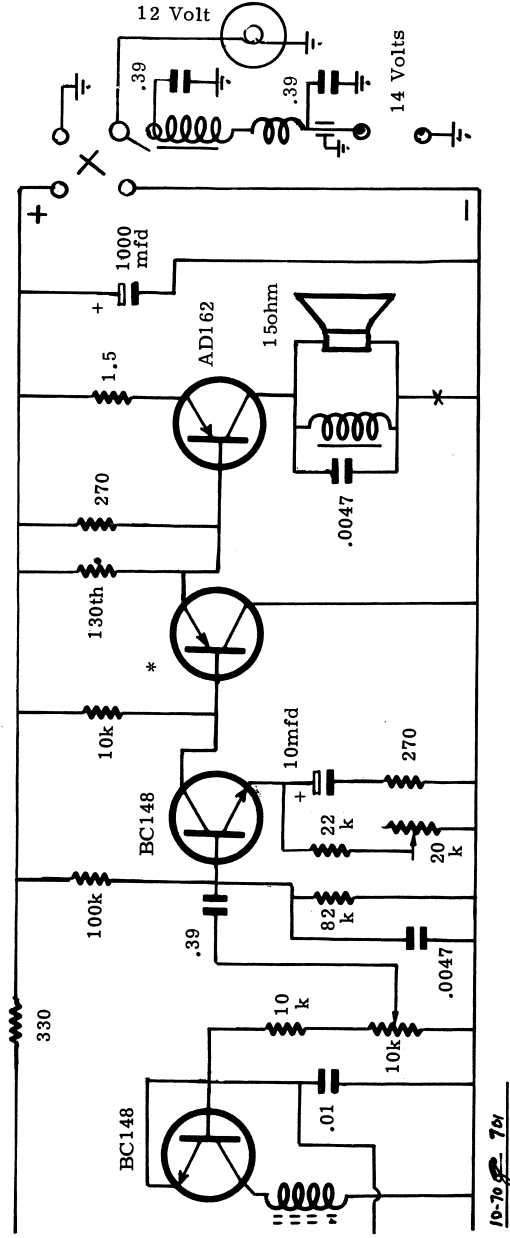
AD149	BC158	BC148	BC148	BF195	BF195	BF194	BF194
C8 2.6	C7 0	C6 12	C5 0	C4 11.2	C3 11.2	C2 11.3	C1 11.3
B8 12.9	B7 12	B6 5.7	B5 .2	B4 2	B3 1.8	B2 2	B1 1.8
E8 13.2	E7 12.9	E6 5.5	E5 .2	E4 1.3	E3 1.2	E2 1.5	E1 1.2

COLLECTOR CURRENT AD149

500 MA. at 14 Volts

AUTOVOX Audio Section for Model 701 & 701P  
 For RF. Section refer to separate circuit.

\* OC968 Replacing  
 BC178 or BC158

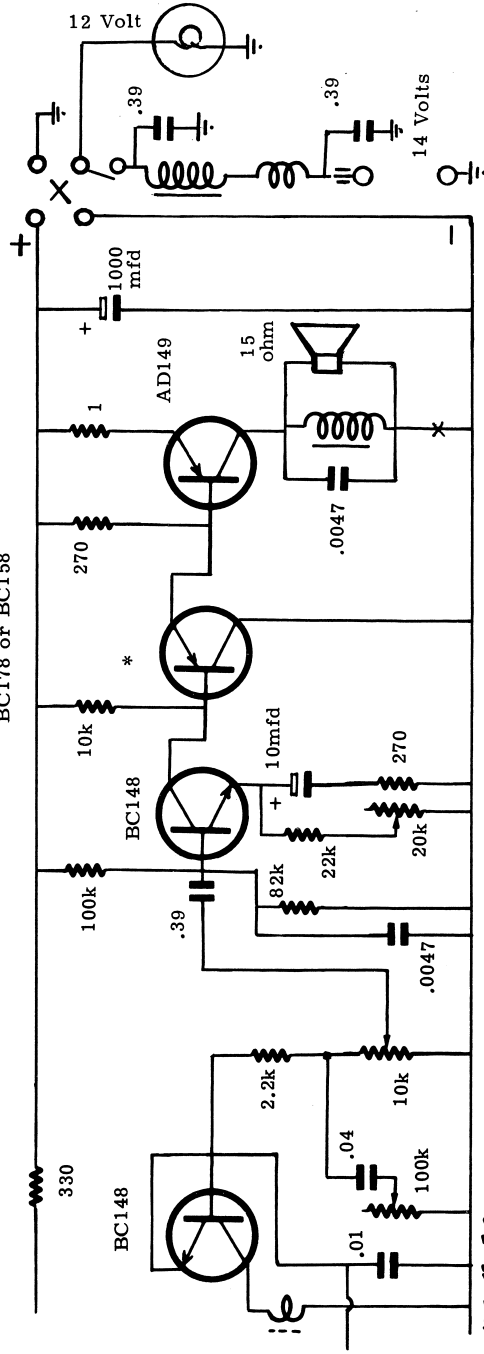


10-70 *P* 701

\* When checking the collector current of the output transistor, the MA Meter must be connected in series with the collector before the set is switched on. After setting the current, switch off the set before disconnecting the meter, otherwise the driver transistor BC158, BC178 or OC968 (depending on the one used) could be damaged.

AUTOVOX Audio Section for Model 702 & 702P  
 For RF. Section refer to separate circuit.

\* OC968 Replacing  
 BC178 or BC158



10-70 *P* 702