

Service Data for the Healing Receiver

MODEL 550A

Power Supply—6 volt Accumulator.

Frequency Range—550-1,620 kilocycles, 7,890-24,000 kilocycles.

Intermediate Frequency—455 kilocycles.

Speaker Transformer Impedance—15,000 ohms.

Dial Lights—6 volt, .1 or .15 amp.

Battery Current—1 amp. without dial lights.

Typical Valve Voltages:—

		1,000 ohms per volt D.C. meter scales.			
		10 V.	250 V.	250 V.	250 V.
Valve	Use	Filament	Screen	Plate	Osc. Plate
1C7G	Osc. Mod.	2	50	155	} 60—B.C. 125—S.W.
1K5G	1st I.F.	2	45-50	155	
1K5G	2nd I.F.	2	45-50	155	
1K7G	Det. A.V.C., 1st A.F.	2	—	65	
1L5G	2nd A.F.	2	155	150	

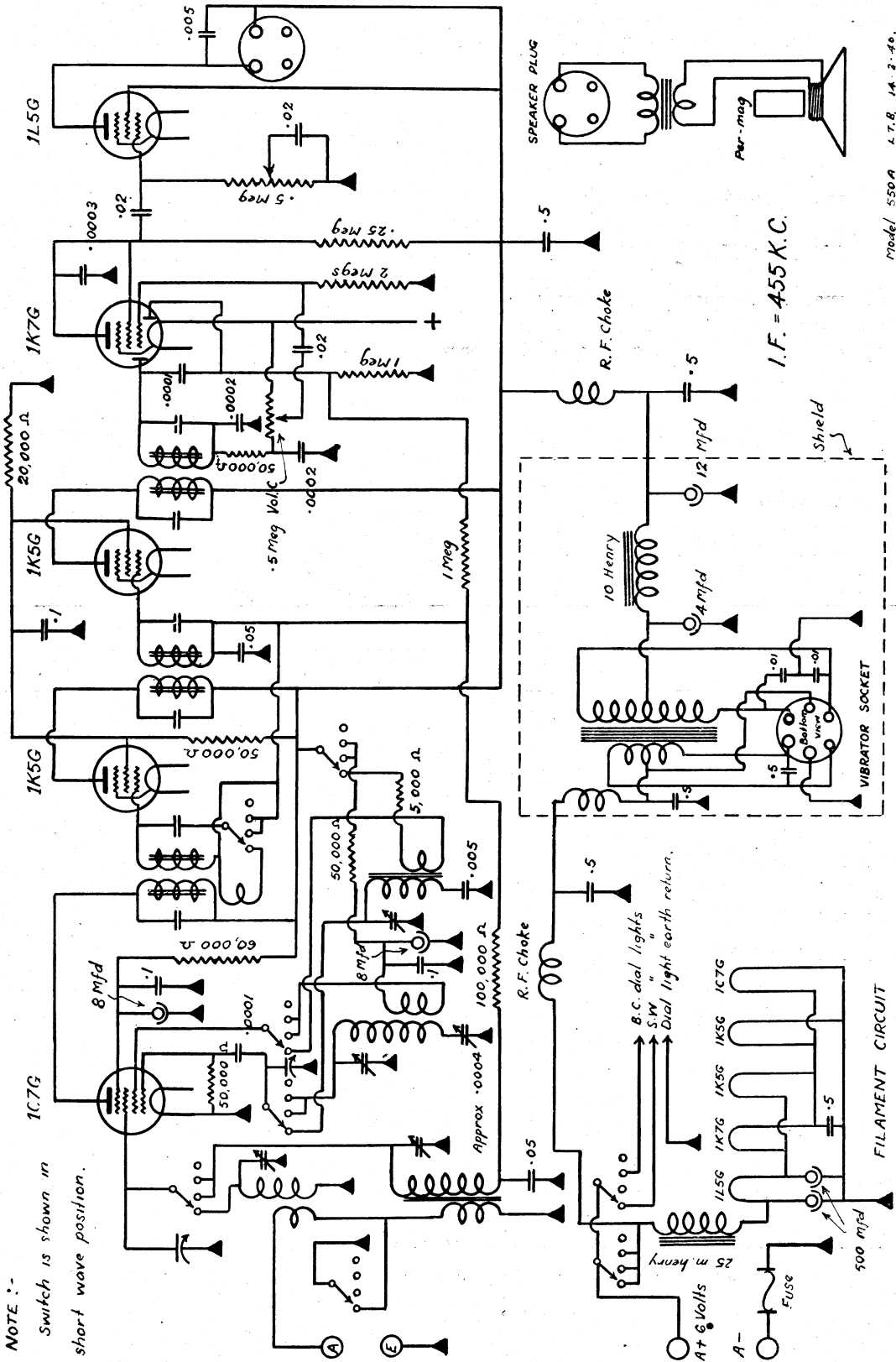
Voltage measurements taken with aerial disconnected and no signal input.

See pages 153 and 117 for alignment procedure.

Trimmers.—The trimmers are mounted in a row with the short-wave oscillator nearest the switch gear, followed by the short-wave aerial, then the broadcast oscillator.

HEALING

Service Data for the Healing Receiver, Model 550A.



NOTE :-
Switch is shown in short wave position.

Model 550A 4.7.8. 14. 2. 46.

Circuit Diagram of Model 550A