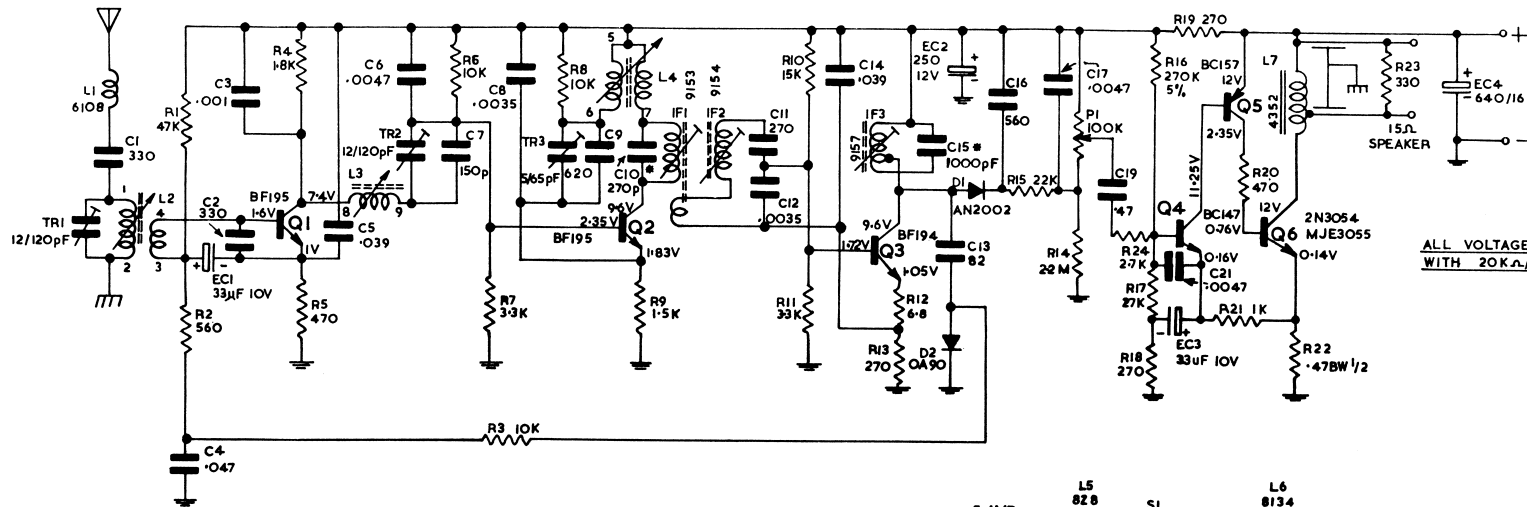
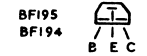
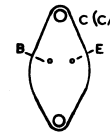
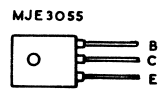
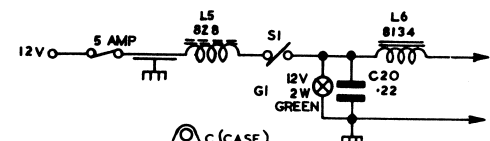
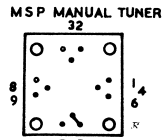
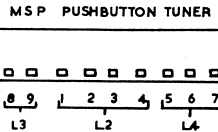


FERRIS SOLID STATE CAR RADIO M302 - M309



ALL VOLTAGES MEASURED WITH 20KΩ/V METER



R1	47K	Resistor	C1	330 pF	600V	10%	Polystyrene Capacitor
R2	560 Ohm	"	C2	330 pF	100V	"	Ceramic
R3	10K	"	C3	.001 uF	125V	10%	Polystyrene
R4	1.8K	"	C4	.047 uF	100V	"	Polyester
R5	470 Ohm	"	C5	.039 uF	100V	"	Polyester
R6	10K	"	C6	.0047 uF	125V	10%	Polystyrene
R7	3.3K	"	C7	150 pF	600V	5%	Polystyrene
R8	10K	"	C8	.0035 uF	125V	10%	Polystyrene
R9	1.5K	"	C9	620 pF	125V	10%	Polystyrene
R10	15K	"	C10	270 pF	600V	5%	Polystyrene
R11	3.3K	"	C11	270 pF	600V	5%	Polystyrene
R12	6.8 Ohm	"	C12	.0035 uF	125V	10%	Polystyrene
R13	270 Ohm	"	C13	82 pF	600V	10%	Polystyrene
R14	2.2M Ohm	"	C14	.039 uF	100V	"	Polyester
R15	22K	"	C15	1000 pF	125V	5%	Polystyrene
R16	270K 5%	"	C16	560 pF	125V	10%	Polystyrene
R17	27K	"	C17	.0047 uF	100V	"	Polyester
R18	270 Ohm	"	C19	.47 uF	50V	"	PML Lacquer Film Capacitor
R19	270 Ohm	"	C20	.22 uF	50V	"	PML Lacquer Film
R20	470 Ohm	"	C21	.0047 uF	100V	"	Polyester Capacitor
R21	1K	"					
R22	.47 Ohm BW½	"					
R23	330 Ohm	"					
R24	2.7K	"					

TR1	12-120 pF	3 plate 39375 MSP Trimmer	Q1	BF195
TR2	12-120 pF	C.W.A. Trimmer	Q2	BF195
TR3	5-65 pF	C010-GA60E Philips Trimmer	Q3	BF194
EC1	33 uF	10V Electrolytic Capacitor	Q4	BC147
EC2	250 uF	12V	Q5	BC157
EC3	33 uF	10V	Q6	MJE3055, 2N3054
EC4	640 uF	16V	D1	AN2002
L1	6108	Aerial Choke	D2	OA90
L2, L3, L4		Tuner, Push button 6460-043, Manual 63920-011	G1	12 2W Green Glob
L5	828	HF Choke		
L6	8134	LF Choke		
L7	4352	O/P Choke		
IF1	9153			
IF2	9154			
IF3	9157			
P1, S1		Volume control and On/Off switch R2532		

All resistors 10% BTS ½ Watt unless otherwise specified.