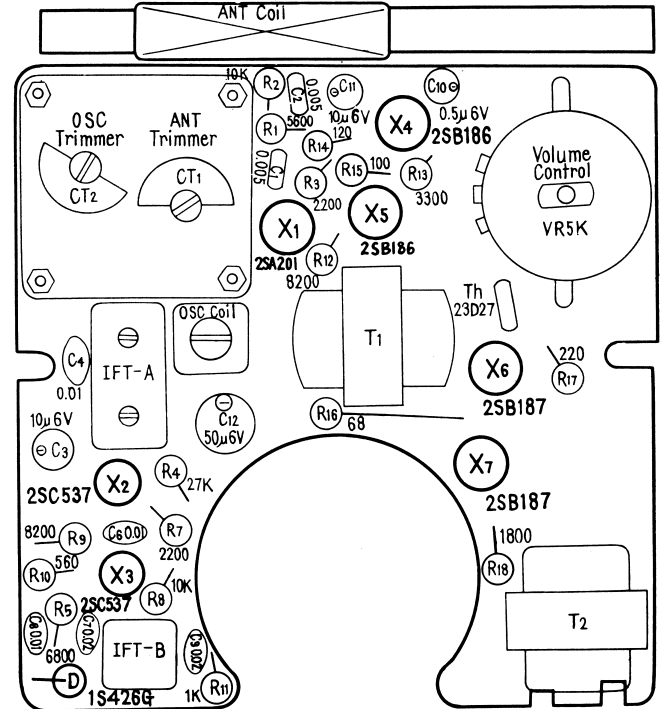
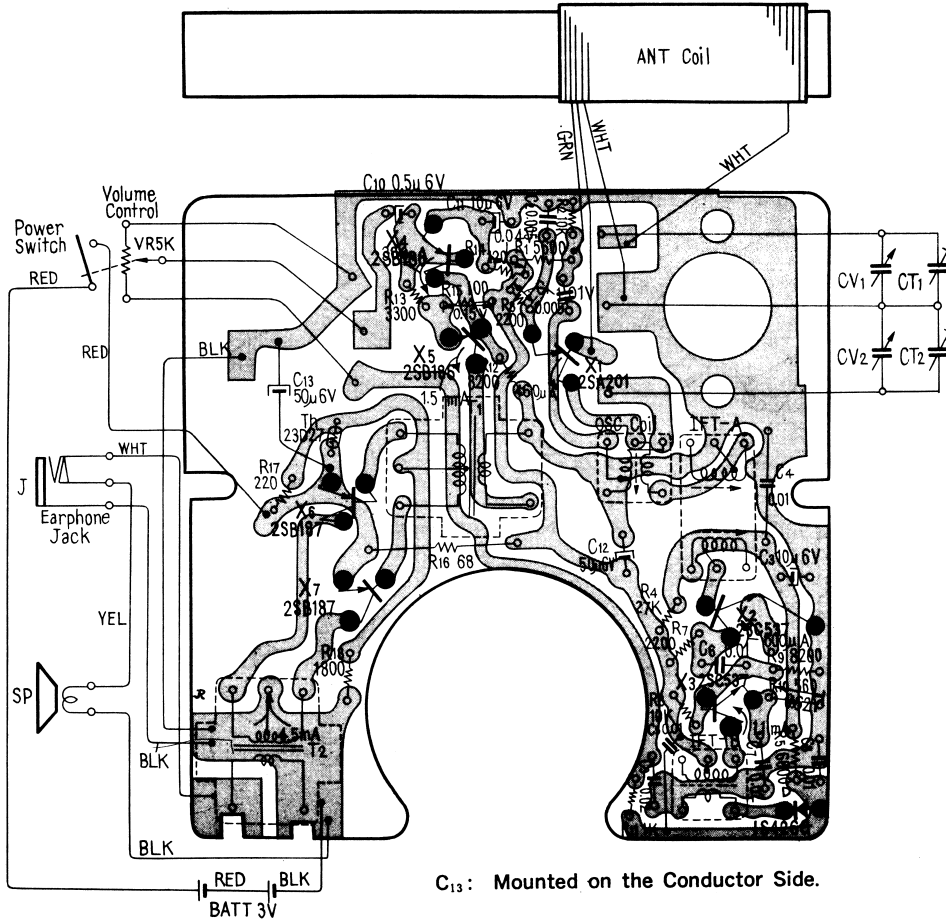


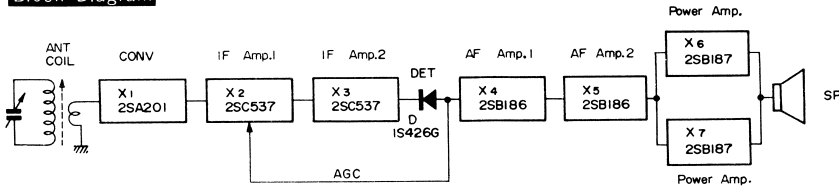
— Conductor Side —

— Component Side —



C13: Mounted on the Conductor Side.

Block Diagram

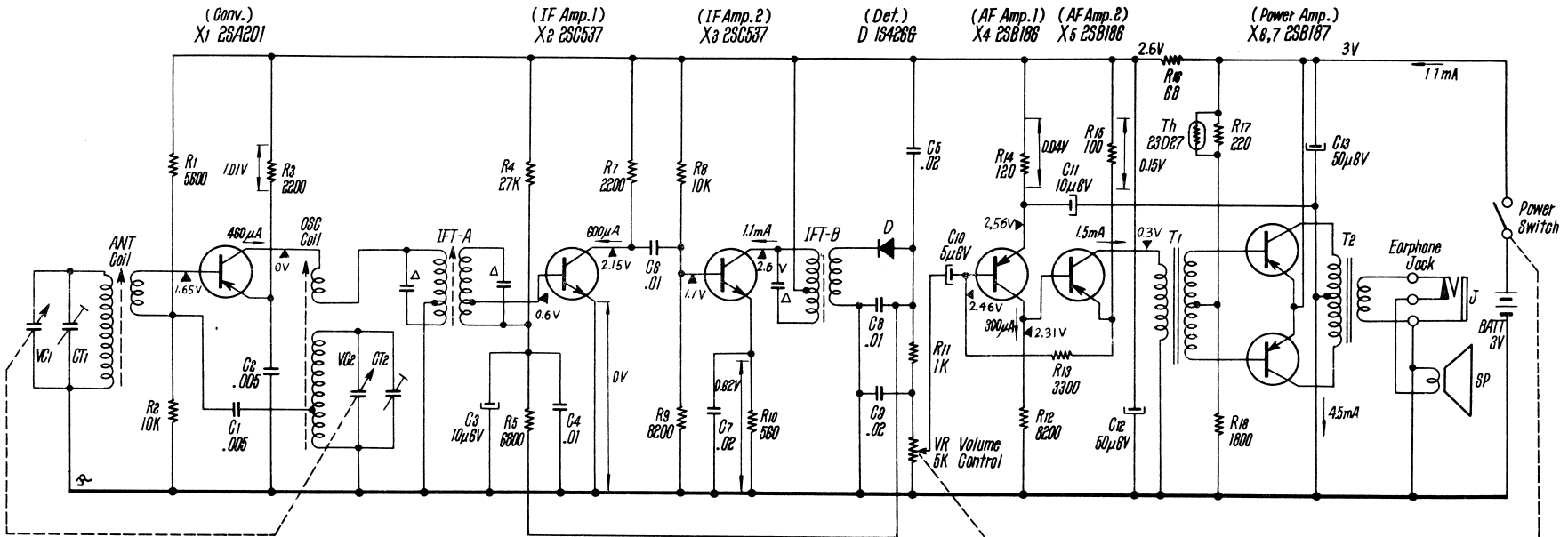
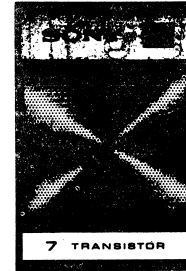


Sony 2R-30

S21-1

Frequency Coverage and Tracking Adjustment

Adj. Item	SSG (Standard Signal Generator) Coupling	SSG Freq.	Receiver Dial Setting	Connect VTVM	Adjust	Remarks
Frequency Coverage	Loop Antenna	520 Kc (1,000 c/s, 30% AM)	Fully Counter-clockwise	To Earphone Jack with 8 Ω load resistor in parallel.	OSC Coil	Adjust for maximum meter reading. Volume: Max. Power Source: DC 3V
		1,680 Kc (")	Fully Clockwise		OSC Trimmer (C _{T2})	
Tracking	—ditto—	620 Kc (")	Tune to 620 Kc Signal	—ditto—	ANT Coil	—ditto—
		1,400 Kc (")	Tune to 1,400Kc Signal		ANT Trimmer (C _{T1})	



Δ: Built in IFT.