

PHILIPS RADIOPLAYER

MODEL 2262

A.C. OPERATED FOR WORLD-WIDE RECEPTION.

SPECIFICATIONS

(Subject to change without notice.)

Voltage Rating (Power supply)	220-260 volts A.C. (Also special 110 volt models)
Tuning Range	1600 to 540 Kc/s. 8 to 22 Mc/s.
Intermediate Frequency	472.5 Kc/s.

VALVE EQUIPMENT

R.F. Amplifier	6U7G R.F. Penthode.
Frequency Converter	EK2G Octode.
I.F. Amplifier	6U7G R.F. Penthode.
Detector and Audio	6B6G Duo-diode Triode.
Power Amplifier	6V6G Beam Tetrode.
Tuning Indicator	6U5
Dial Lamp	6.5 volt 0.64A. type 8091D.

REMOVING THE CHASSIS.

Suggested removal procedure is as follows:

- (1) Remove the power plug.
- (2) Unscrew cabinet back cover.
- (3) Remove knobs at front of cabinet (recessed grub screws).
- (4) Remove dial glass and mechanism by withdrawing the four screws securing the dial brackets at either end of the dial. Care should be taken in this operation to see that, when released, the dial glass is carefully removed and laid aside to avoid risk of breakage or other damage. The remaining mechanism of the dial is now laid with care on top of the chassis, with due attention to the fact that the flexible cable should not be kinked.
- (5) Unscrew four screws located on each end of the baffle and employed to fix the baffle to the Philite cabinet. The screws in question are approximately

two inches from the top and bottom in either case. It is not necessary to detach the main chassis supporting brackets from the chassis or baffle.

- (6) Slide chassis, speaker and baffle complete out of the cabinet.

REPLACING THE CHASSIS.

A reversal of the withdrawal procedure will suffice to restore the chassis, speaker and baffle in one unit to the cabinet. If the dial mechanism is unaltered, it will not require adjustment when it is finally re-fitted.

DIAL CALIBRATION.

If the pointer does not indicate the correct position for a given station, the position of the pointer in relation to the gang condenser can be adjusted by loosening the clamping screw on the pointer slider and moving the slotted wire tension guide in relation to the pointer slider. After adjustment, tighten the clamping screw securely.

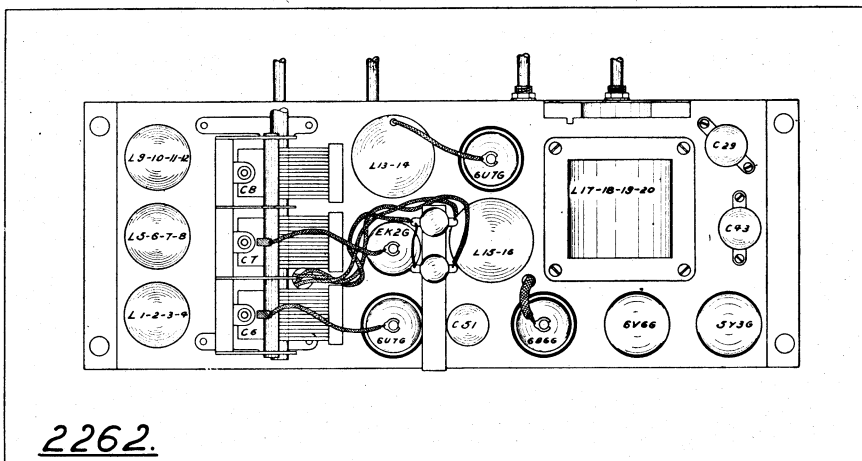
PARTS NOT SHOWN ON CIRCUIT DIAGRAM.

No. on Dial Drawing.	Description.	Code No.	Price.
—	Back, Cabinet	34/644A	5/6
—	Baffle, with silk	33/656	9/3
—	Bag, cloth for speaker	35/226	2/-
—	Bar assembly (decorative)	93/226	12/6
—	Bracket, Cabinet back securing	23/449	3d.
6	Bracket, dial slider, adjustable	24/482	6d.
7	Bracket, dial mounting	23/441	6d.
5	Bracket, gang cable support	23/443	1/6
—	Bracket, tuning control spindle	24/442	6d.
—	Bracket, tuning indicator mounting	23/472	9d.
—	Bracket, tuning indicator socket	23/478	8d.
—	Cabinet, No. 22 (Philite)	32/235	£2/7/6
1	Clamp and slider, pointer transport	24/519	2/6
11	Cord, dial drive	35/313	5d.
—	Cord, power cable	26/211	1/9
8	Counterweight, dial pointer	24/475	3d.
9	Drum, dial drive (Philite)	32/226	2/8
4	Glass, dial, printed	33/535	5/9
—	Grommets, rubber, chassis mounting	32/311	2d.

No. on Dial Drawing.	Description.	Code No.	Price.
—	Knob, tuning, with metal inserts	34/585	1/2
—	Lamp, dial illuminating, coloured	92/216	7d.
—	Locking ring, amphenol socket	24/666	1d.
13	Pointer, glass	33/531	6d.
3	Rubber bands, dial glass	33/316	3d.
—	Silk for baffle	35/213	2/6
2	Sliderod, dial	24/258	1/6
—	Socket, amphenol 6 pin	34/515	5d.
—	Socket, amphenol octal	34/521	6d.
—	Sockets, dial lamp, with bracket	23/483	2/6
—	Spacers, brass, chassis mounting	24/218	2d.
—	Spindle, tuning control	24/262	9d.
—	Spindle, volume control	24/962	6d.
10	Spring, dial cord tension	25/211	2d.
—	Strip, speaker securing	24/468	6d.
—	Switch assembly, wave-change	74/215	9/3
—	Switch, tone control	74/416	1/10
—	Transformer, speaker output	44/324	7/6
—	Valve shield plus cap	24/663	7d.
—	Valve shield base	24/665	3d.
12	Wire assembly, dial drive	26/323	3/-

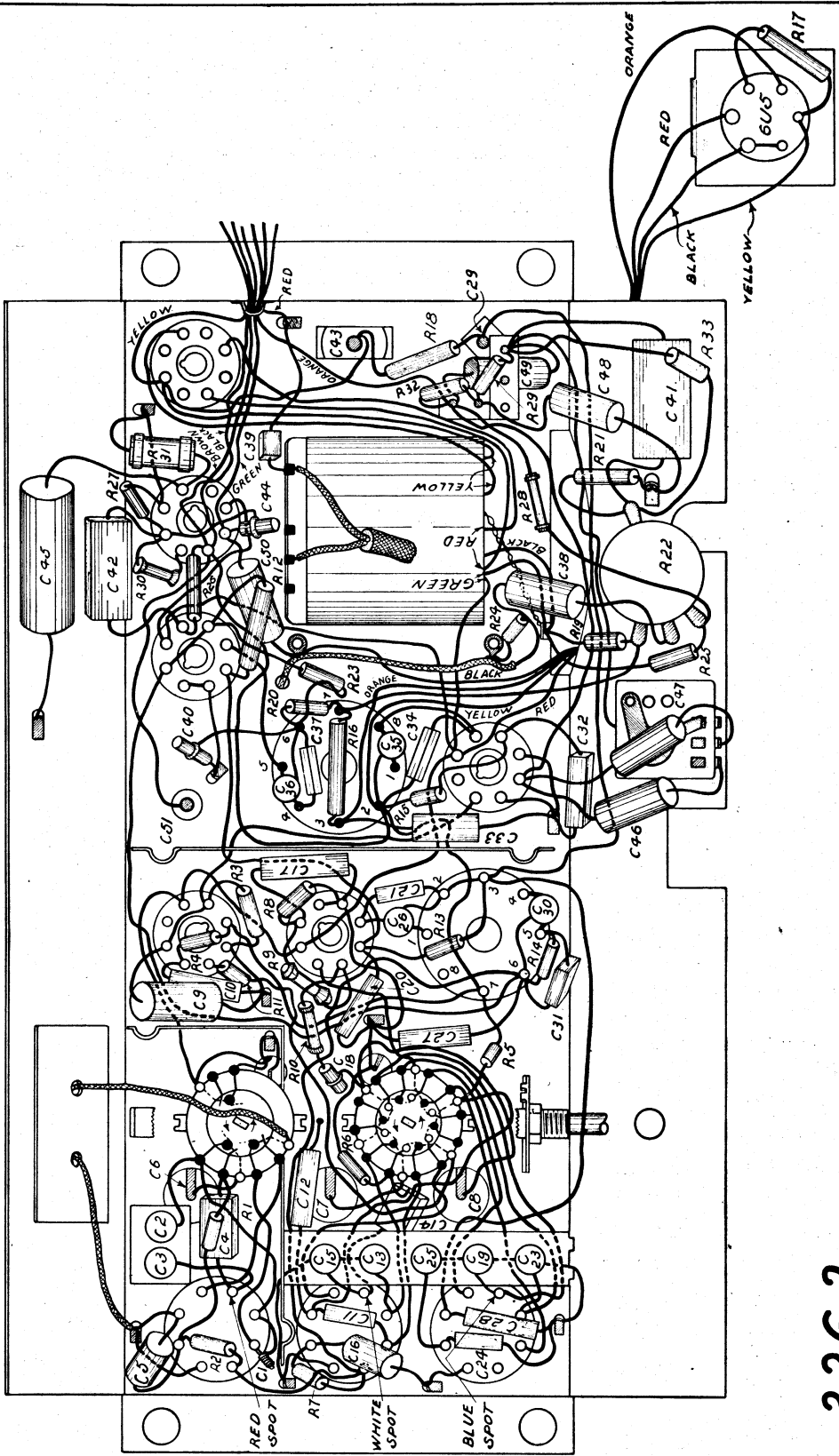
(PRICES QUOTED SUBJECT TO CHANGE WITHOUT NOTICE.)

CHASSIS LAYOUT DIAGRAM



COMPONENT LOCATION DIAGRAM

C	1-5	11	3, 9, 2, 7, 8, 6	18, 31, 9, 10	30, 17, 33, 36	32, 37, 47	38, 50, 44, 38	41, 43, 2, 9
C	29, 16, 28, 13	15, 25, 19, 23, 14, 12	27, 20	26, 21, 96, 51	35, 34, 40	42, 45	48, 49	
A	7, 2	1, 6	10, 5, 11, 14, 9, 13, 8, 3	15	16, 20, 23, 23, 19, 24, 30, 26, 12, 22, 28, 27, 21, 31, 29, 32, 33, 18	17, 18		



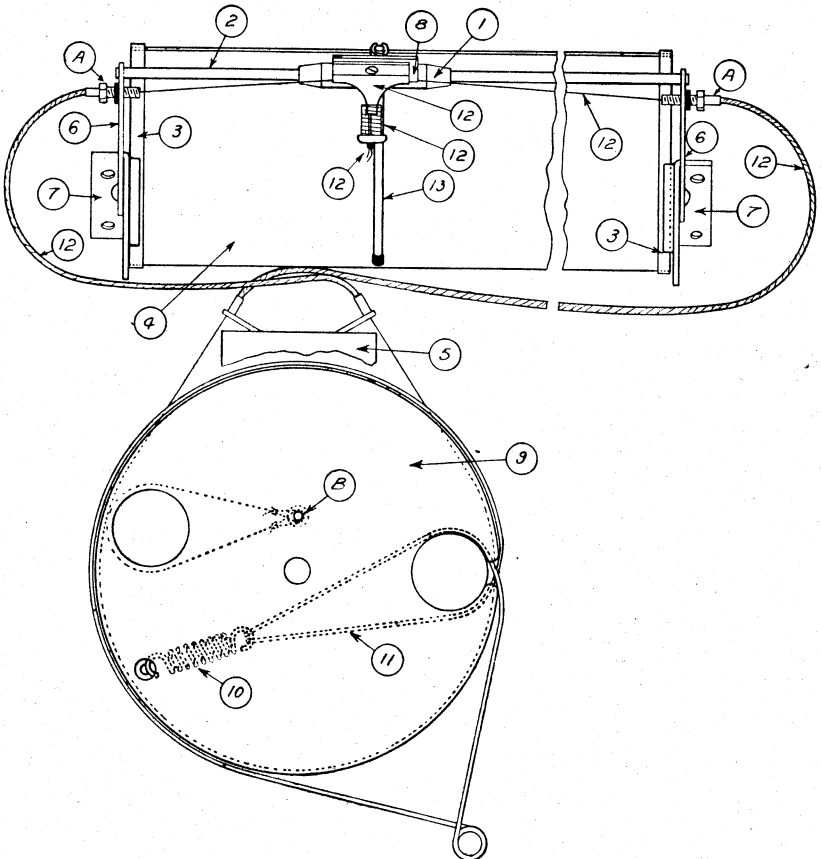
2262

VOLTAGE ANALYSIS.

Valve Type.	Plate Voltage.	Screen Voltage.	Bias Voltage.
6U7G	225	70	1.4
EK2G	225	40	1.0
6U7G	235	80	1.4
6B6G	90	—	0
6V6G	225	235	10
5Y3G	320 volts A.C. per plate		

NOTE:

The abovementioned voltage values, with the exception of bias voltages, are measured between the socket points indicated and chassis, with the receiver in the no signal condition and with the volume control at zero. Bias voltages are to be measured at the source of the voltage, as incorrect readings will otherwise be obtained. Voltages are measured with a 1,000 ohm per volt voltmeter and may vary as much as 10 per cent. from the figures quoted.



DIAL PARTS DIAGRAM

SERVICE DATA.

COMPONENT PARTS.

CONDENSERS. (PRICES AND SPECIFICATIONS SUBJECT TO CHANGE WITHOUT NOTICE.)

No. on Diagram.	Value.	Code No.	Price.	No. on Diagram.	Value.	Code No.	Price.
C1	8 uuF	52/521	3d.	C28	0.01 uF	52/311	4d.
C2	2.5 to 30 uuF	54/313	8d.	C29	8 uF	52/426	3/-
C3	2.5 to 30 uuF	54/313	8d.	C30	2.5 to 30 uuF	54/313	8d.
C4	0.0045 uF	52/222	11d.	C31	80 uuF	52/239	6d.
C5	0.05 uF	52/314	7d.	C32	0.01 uF	52/311	4d.
C6, C7, C8	3 Gang	53/215	10/3	C33	0.02 uF	52/313	7d.
C9	0.1 uF	52/316	6d.	C34	80 uuF	52/239	6d.
C10	0.01 uF	52/311	4d.	C35	2.5 to 30 uuF	54/313	8d.
C11	80 uuF	52/239	6d.	C36	2.5 to 30 uuF	54/313	8d.
C12	0.01 uF	52/311	4d.	C37	80 uuF	52/239	6d.
C13	2.5 to 30 uuF	54/313	8d.	C38	0.05 uF	52/314	7d.
C14	0.0045 uF	52/222	11d.	C39	0.002 uF	52/246	1/5
C15	2.5 to 30 uuF	54/313	8d.	C40	100 uuF	52/811	6d.
C16	0.05 uF	52/314	7d.	C41	0.07 uF	52/334	11d.
C17	0.01 uF	52/311	4d.	C42	0.1 uF	52/317	7d.
C18	100 uuF	52/811	6d.	C43	8 uF	52/426	3/-
C19	2.5 to 30 uuF	54/313	8d.	C44	100 uuF	52/811	6d.
C20	0.01 uF	52/311	4d.	C45	25 uF	52/416	1/3
C21	80 uuF	52/239	6d.	C46	0.05 uF	52/314	7d.
C23	2.5 to 30 uuF	54/313	8d.	C47	0.006 uF	52/323	8d.
C24	330 uuF	52/243	7d.	C48	0.03 uF	52/335	6d.
C25	2.5 to 30 uuF	54/313	8d.	C49	0.001 uF	52/343	8d.
C26	2.5 to 30 uuF	54/313	8d.	C50	0.002 uF	52/325	8d.
C27	0.05 uF	52/314	7d.	C51	16 uF	52/429	3/9

RESISTORS.

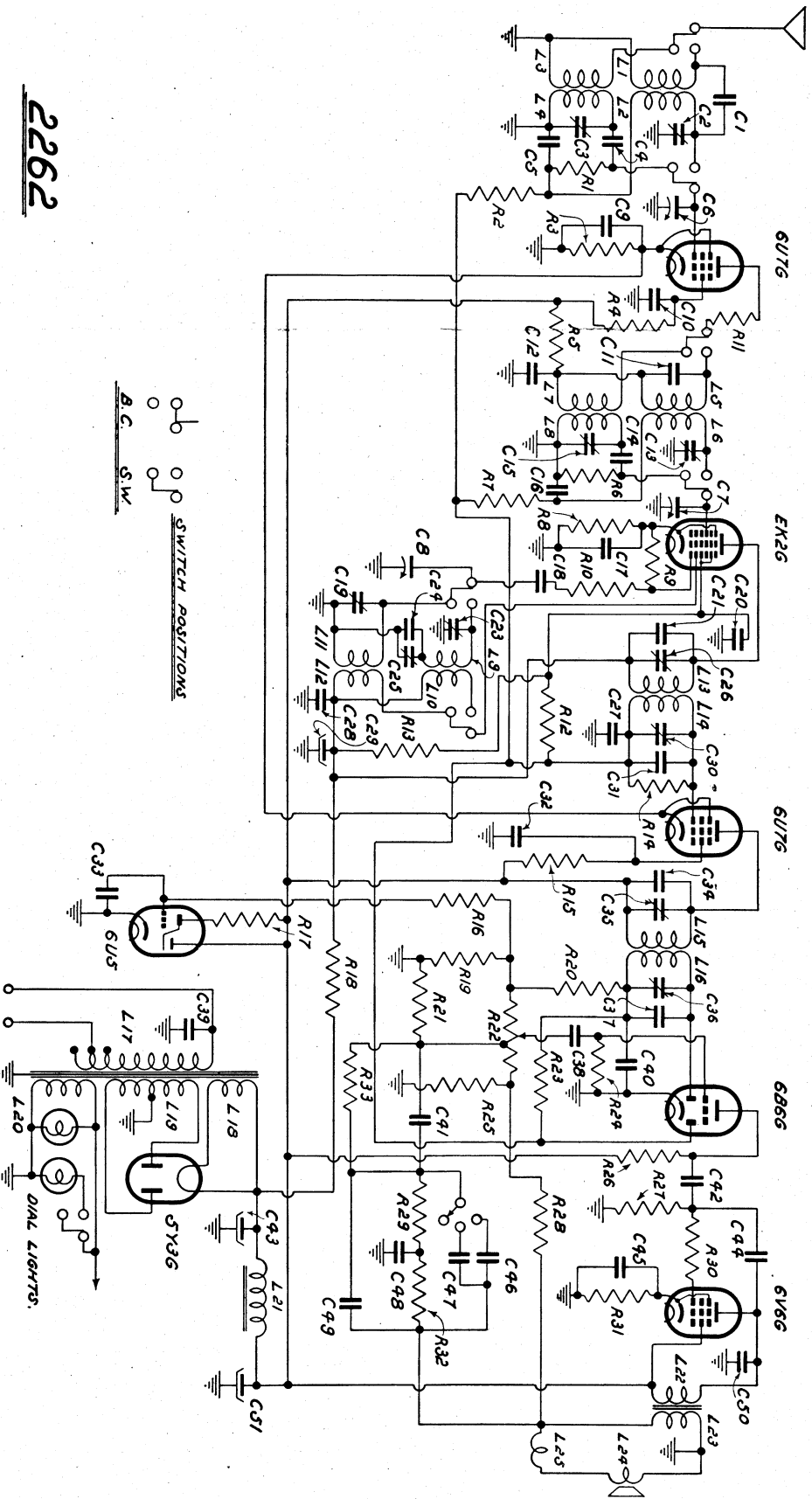
No. on Diagram.	Value.	Code No.	Price.	No. on Diagram.	Value.	Code No.	Price.
R1	0.5 megohm	62/216	4d.	R18	30,000 ohm	62/425	5d.
R2	0.1 megohm	62/215	4d.	R19	0.5 megohm	62/216	4d.
R3	100 ohm	62/242	6d.	R20	0.25 megohm	62/232	4d.
R4	0.1 megohm	62/215	4d.	R21	0.01 megohm	62/213	4d.
R5	1,000 ohm	62/234	4d.	R22	0.5 megohm pot. (tapped)	63/612	3/9
R6	0.5 megohm	62/216	4d.	R23	2 megohm	62/222	4d.
R7	0.1 megohm	62/215	4d.	R24	2 megohm	62/222	4d.
R8	500 ohm	62/224	4d.	R25	25 ohm	62/223	6d.
R9	50,000 ohm	62/212	4d.	R26	0.25 megohm	62/415	5d.
R10	25 ohm	62/223	6d.	R27	0.5 megohm	62/216	4d.
R11	25 ohm	62/223	6d.	R28	50 ohm	62/211	6d.
R12	10 megohm	62/434	6d.	R29	10,000 ohm	62/213	4d.
R13	0.15 megohm	62/233	4d.	R30	50,000 ohm	62/212	4d.
R14	1 megohm	62/214	4d.	R31	250 ohm	64/239	6d.
R15	0.1 megohm	62/215	4d.	R32	1,500 ohm	62/231	4d.
R16	5 megohm	62/431	6d.	R33	50,000 ohm	62/212	4d.
R17	0.5 megohm	62/419	6d.				

COILS.

No. on Diagram	Description.	Code No.	Price.	No. on Diagram	Description.	Code No.	Price.
L1	Aerial Coil	42/716	4/3	L13	1st Intermediate	42/319	7/3
L2							
L3							
L4							
L5	R.F. Coil	42/812	4/3	L14	2nd Intermediate	42/423	7/3
L6							
L7				Power Transformer (240V.)	44/228	14/6	
L8							
L9	Oscillator Coil	42/222	4/3	L15	Power Transformer (110V.)	44/226	14/6
L10							
L11				Speaker, complete with Transformer	45/350	21/-	
L12							

SERVICE DATA.

L	1, 2, 3, 4.	5, 6, 7, 8.	9, 10, 11, 12, 13, 14.	15, 16.	17.	18, 19, 20.	21.	22.	23.	24, 25, L
C	1, 2, 3, 4.	5, 6, 7, 8.	9, 10, 11, 12, 13, 14, 15, 16.	17, 18, 19, 20, 21, 22, 23, 24, 25, 26, 27, 28, 29, 30, 31.	32, 33.	34, 35.	36, 38, 40, 41.	42.	43, 44, 46, 49.	50
R	1, 2, 3.	4, 5, 6, 7, 8.	9, 10, 11, 12, 13, 14, 15, 16, 17, 18, 19, 20, 21, 22, 23, 24, 25.	26, 27, 28, 29, 30, 31.	32, 33.	34, 35, 36, 37, 38, 39, 40, 41, 42, 43, 44, 45, 46, 47, 48, 49, 50.	51.	52.	53, 54, 55, 56, 57, 58, 59, 60.	61, 62.



22662